

Converting Colors

Decimal(14824294)

Have a look what the booklet for
Decimal(14824294) contains.

Decimal(14824294)	3
<i>Conversions</i>	4
<i>Details</i>	6
<i>Harmonies</i>	11
<i>Previews</i>	23
<i>Color Blindness Simulation</i>	26
<i>CSS Examples</i>	29

Color

Decimal(14824294)

Conversions

Conversions Part 1

Format	Color
Hex	E23366
RGB	226, 51, 102
RGB Percent	89%, 20%, 40%
CMY	0.1137, 0.8000, 0.6000
CMYK	0.00, 0.77, 0.55, 0.11
HSL	343°, 75%, 54%
HSV	343°, 77%, 89%
XYZ	34.9461, 19.4957, 14.4916
YIQ	109.1390, 87.9290, 52.9610

Conversions

Conversions Part 2

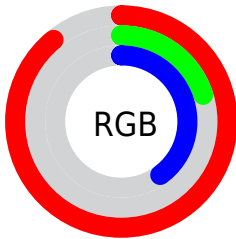
Format	Color
R_{YB}	226, 51, 102
Decimal	14824294
CIE _{Lab}	51.26, 68.28, 13.86
CIE _{LCh}	51, 69.667, 11.472
Yxy	19.4957, 0.5070, 0.2828
Android (android.graphics.Color)	4293014374 (0xFFE23366)
YUV	109.1390, -3.5195, 102.4871
Hunter-Lab	44.1540, 64.0064, 11.4485

Details

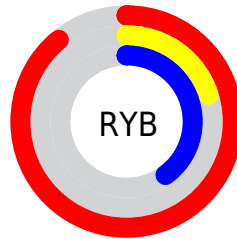
The Decimal color **14824294** is a dark color, and the websafe version is hex **CC3366**. The color can be described as dark washed rose. A complement of this color would be **3400367**, and the grayscale version is **7171437**.

A 20% lighter version of the original color is **16740761**, and **10747960** is the 20% darker color. If you saturate the color by 10%, you get **14818390**, and if you desaturate by 10%, it is **14830198**.

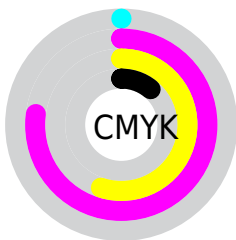
Distribution



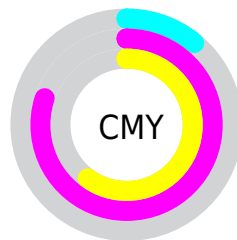
- Red (89%)
- Green (20%)
- Blue (40%)



- Red (89%)
- Yellow (20%)
- Blue (40%)



- Cyan (0%)
- Magenta (77%)
- Yellow (55%)
- Black (11%)



- Cyan (11%)
- Magenta (80%)
- Yellow (60%)

Brightness & Saturation Gradients

These gradients show how the Decimal color 14824294 changes by changing the brightness by 10 percent. The first figure shows a shift by +10% for each color and the second figure -10%.

Similar to the brightness gradients but the following saturation gradients show a change of the Decimal color 14824294 by changing the saturation by 10% instead.

 14824294

 14824294

16777215

 12779598

 16740761

 10747960

 16748467

 8716323

 16755919

 6750221

 16763371

 4915203

 16771071

 2818049

 0

 14824294

 14824294

 14818390

 14830198

 14812742

 14835846

 14811202

 14841750

 14847398

 14853302

 14859206

 14864854

 14870758

 14876406

Harmonies

Analogous

The Analogous color harmony consists of three colors that are next to each other on the color wheel.



13647521



14824294



13978669

Triad

The Triadic color harmony groups three colors that are evenly spaced from another and form a triangle on the color wheel.



14824294



3705868



35820

Complementary

The Complementary color scheme is a pair of colors which are on the opposite of each other on the color wheel.



14824294



3400367

Split Complementary

Split-complementary colors differ from the complementary color scheme. The scheme consists of three colors, the original color and two neighbors of the complement color.



37832



14824294



37458

Square

The Square scheme is like the rectangle color scheme, but the four colors are evenly spaced on the color wheel.



14824294



8355584



38032



31472

Rectangle

The Rectangle color scheme consists of four colors that form a rectangle on the color wheel.



14824294



12541952



38032



36579

Sweetspot

The Sweet Spot groups the original color and five complimentary colors.



14824294



16762069



11416546



8412262



0



8421504

Same Dimension

The Same Dimension uses a secret algorithm to generate beautiful new colors.



14824294



16716375



14833203



7365992



11534387



3145742

Inverse Universe

The Inverse Universe completely reimagines the original color for something new.



14824294



16716375



3391458



7365992



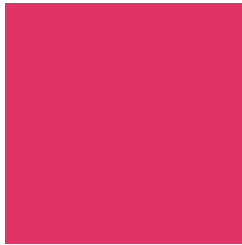
11534387



3145742

Previews

White Background



This preview shows how the Decimal color 14824294 looks on a white background.

Color Contrast Check

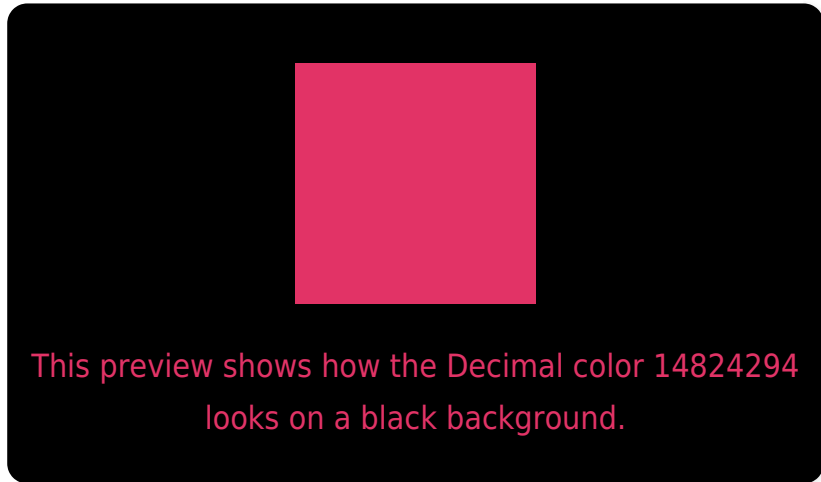
Large Text (above 18pt) WCAG AA ✓ Pass

Any Text WCAG AA × Fail

Large Text (above 18pt) WCAG AAA × Fail

Any Text WCAG AAA × Fail

Black Background



Color Contrast Check

Large Text (above 18pt) WCAG AA ✓ Pass

Any Text WCAG AA ✓ Pass

Large Text (above 18pt) WCAG AAA ✓ Pass

Any Text WCAG AAA × Fail

If you want to check with other color combinations, try the [Color Contrast Checker](#).

Decimal 14824294 Background



This preview shows how black text looks on a background with the Decimal color 14824294.



This preview shows how white text looks on a background with the Decimal color 14824294.

Color Blindness Simulation

Color vision deficiency is a very complex topic, and I could not describe the different causes any better than Wikipedia does, so if you want to learn more, you should check out their [article about color blindness](#).


Dichromacy



Original Color
14824294

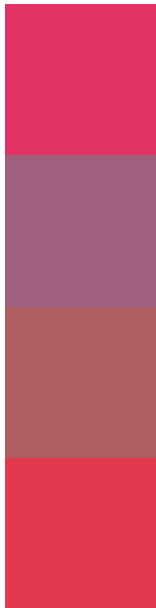
Protanopia
7961226

Deuteranopia
9467486



Tritanopia
14695487

Trichromacy



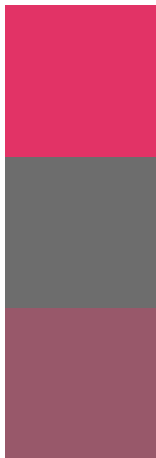
Original Color
14824294

Protanomaly
10444925

Deuteranomaly
11427425

Tritanomaly
14760269

Monochromacy



Original Color
14824294

Achromatopsia
7171437

Achromatomaly
9984106

CSS Examples

Text

The CSS property to change the color of the text to Decimal 14824294 is called "color". The color property can be set on classes, ids or directly on the HTML element.

This example shows how text in the color #E23366 looks like.

```
.text, #text, p{  
    color:#E23366  
}
```

If you want to add a text shadow in that color use the text-shadow property, you can generate a text shadow directly with our [CSS Text Shadow Generator](#).

Here you see how black text with a 4 pixel #E23366 colored shadow looks like.

```
.shadow{ text-shadow: 4px 4px 2px #E23366
}
```

Border

The CSS property to change the border of an element to Decimal 14824294 is called "border". The border property can be set on classes, ids or directly on the HTML element.

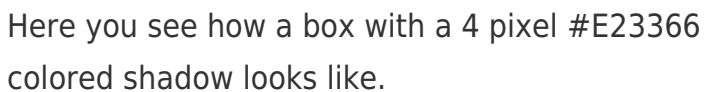
This example shows the color as border, it can be applied via the CSS property "border" or "border-color".

```
.border, #border, table{ border:4px solid
#E23366 }
```

If only the border color should be changed use the property `border-color`.

```
.border{ border-color:#E23366 }
```

If you want to add a box shadow in that color use:



Here you see how a box with a 4 pixel #E23366 colored shadow looks like.

```
.boxshadow{ -moz-box-shadow:4px 4px 4px  
4px #E23366; -webkit-box-shadow:4px 4px  
4px 4px #E23366; box-shadow:4px 4px 4px  
4px #E23366 }
```

Background

The CSS property to change the background color of an element to Decimal 14824294 is called "background". The background property can be set on classes, ids or directly on the HTML element.

```
.background, #background, body{  
background:#E23366 }
```

If only the background color should be changed can be used:

```
.background{ background-color:#E23366 }
```

This example shows the color as background, it is applied via the CSS property "background".

To optimize and compress your CSS code, you can use our [online CSS compressor and optimizer](#) based on csstidy. If you want to create a linear or radial gradient as background or border, check our [CSS Gradient Generator](#).

Hey! You found this booklet interesting? Support Converting Colors with the new Membership Option!

The pro membership hides all ads, plus gives you double the colors in the color bucket, and more awesome pro features!

[Learn more, Memberships starting at \\$2.50/m!](#)

**Follow me
on Twitter!**

@ConvertingColor