

# Converting Colors

Decimal(14830191)

Have a look what the booklet for  
Decimal(14830191) contains.

<b>Decimal(14830191)</b> .....	3
<i><b>Conversions</b></i> .....	4
<i><b>Details</b></i> .....	6
<i><b>Harmonies</b></i> .....	11
<i><b>Previews</b></i> .....	23
<i><b>Color Blindness Simulation</b></i> .....	26
<i><b>CSS Examples</b></i> .....	29

# Color

**Decimal(14830191)**

# Conversions

## Conversions Part 1

<b>Format</b>	<b>Color</b>
Hex	E24A6F
RGB	226, 74, 111
RGB Percent	89%, 29%, 44%
CMY	0.1137, 0.7098, 0.5647
CMYK	0.00, 0.67, 0.51, 0.11
HSL	345°, 72%, 59%
HSV	345°, 67%, 89%
XYZ	36.6821, 22.2140, 17.3933
YIQ	123.6660, 78.7150, 43.7310

# Conversions

## Conversions Part 2

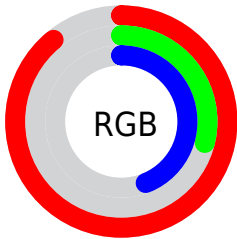
<b>Format</b>	<b>Color</b>
<b>R<sub>YB</sub></b>	226, 74, 111
Decimal	14830191
CIE <sub>Lab</sub>	54.25, 61.22, 12.61
CIE <sub>LCh</sub>	54, 62.503, 11.637
Yxy	22.2140, 0.4808, 0.2912
Android (android.graphics.Color)	4293020271 (0xFFE24A6F)
YUV	123.6660, -6.2443, 89.7469
Hunter-Lab	47.1317, 56.4438, 11.1121

# Details

The Decimal color **14830191** is a dark color, and the websafe version is hex **CC3366**. The color can be described as middle muted rose. A complement of this color would be **4907709**, and the grayscale version is **8158332**.

A 20% lighter version of the original color is **16745378**, and **10813504** is the 20% darker color. If you saturate the color by 10%, you get **14824286**, and if you desaturate by 10%, it is **14836096**.

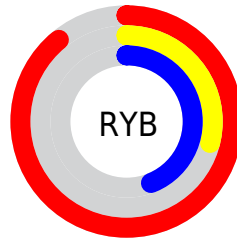
# Distribution



Red (89%)

Green (29%)

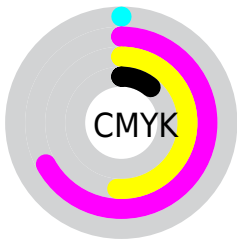
Blue (44%)



Red (89%)

Yellow (29%)

Blue (44%)

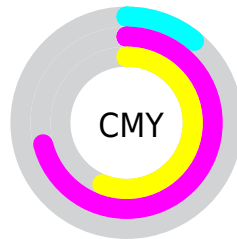


Cyan (0%)

Magenta (67%)

Yellow (51%)

Black (11%)



Cyan (11%)

Magenta (71%)

Yellow (56%)

# Brightness & Saturation Gradients

These gradients show how the Decimal color 14830191 changes by changing the brightness by 10 percent. The first figure shows a shift by +10% for each color and the second figure -10%.

Similar to the brightness gradients but the following saturation gradients show a change of the Decimal color 14830191 by changing the saturation by 10% instead.



 14830191

 14830191

16777215

 12790359

 16745378

 10813504

 16752829

 8847402

 16760025

 6881302

 16767478

 5046273

 16775167

 3080194

 0

 14830191

 14830191

 14824286

 14836096

 14818637

 14841745

 14812732

 14847650

 14811191

 14853299

 14859204

 14865110

 14870759

 14876664

 14876671

# Harmonies

## Analogous

The Analogous color harmony consists of three colors that are next to each other on the color wheel.



13717925



14830191



14113596

# Triad

The Triadic color harmony groups three colors that are evenly spaced from another and form a triangle on the color wheel.



14830191



4952616



37352

# Complementary

The Complementary color scheme is a pair of colors which are on the opposite of each other on the color wheel.



14830191



4907709

# Split Complementary

Split-complementary colors differ from the complementary color scheme. The scheme consists of three colors, the original color and two neighbors of the complement color.



39369



14830191



39006

# Square

The Square scheme is like the rectangle color scheme, but the four colors are evenly spaced on the color wheel.



14830191



8947200



39830



2589164

# Rectangle

The Rectangle color scheme consists of four colors that form a rectangle on the color wheel.



14830191



12806940



39830



38113



# Sweetspot

The Sweet Spot groups the original color and five complimentary colors.



14830191



16764120



12339938



8413544



0



8421504



# Same Dimension

The Same Dimension uses a secret algorithm to generate beautiful new colors.



14830191



16724067



14839882



7365992



11534379



3145740



# Inverse Universe

The Inverse Universe completely reimagines the original color for something new.



14830191



16724067



4898018



7365992



11534379

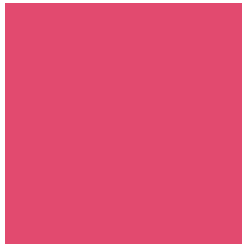


3145740



# Previews

## White Background



This preview shows how the Decimal color 14830191 looks on a white background.

## Color Contrast Check

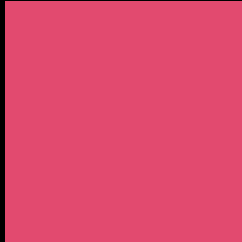
Large Text (above 18pt) WCAG AA ✓ Pass

Any Text WCAG AA × Fail

Large Text (above 18pt) WCAG AAA × Fail

Any Text WCAG AAA × Fail

# Black Background



This preview shows how the Decimal color 14830191 looks on a black background.

## Color Contrast Check

Large Text (above 18pt) WCAG AA ✓ Pass

Any Text WCAG AA ✓ Pass

Large Text (above 18pt) WCAG AAA ✓ Pass

Any Text WCAG AAA × Fail

If you want to check with other color combinations, try the [Color Contrast Checker](#).



## Decimal 14830191 Background



This preview shows how black text looks on a background with the Decimal color 14830191.



This preview shows how white text looks on a background with the Decimal color 14830191.

# Color Blindness Simulation

Color vision deficiency is a very complex topic, and I could not describe the different causes any better than Wikipedia does, so if you want to learn more, you should check out their [article about color blindness](#).

## Dichromacy



**Original Color**  
14830191

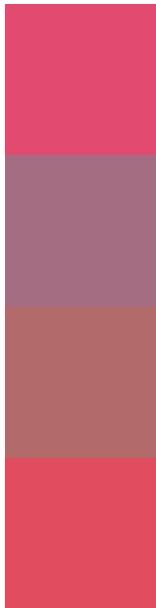
**Protanopia**  
8552844

**Deuteranopia**  
9993576



**Tritanopia**  
14700372

# Trichromacy



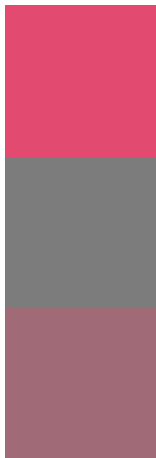
**Original Color**  
14830191

**Protanomaly**  
10841473

**Deuteranomaly**  
11758187

**Tritanomaly**  
14765406

# Monochromacy



**Original Color**  
14830191

**Achromatopsia**  
8158332

**Achromatomaly**  
10578551

# CSS Examples

## Text

The CSS property to change the color of the text to Decimal 14830191 is called "color". The color property can be set on classes, ids or directly on the HTML element.

This example shows how text in the color #E24A6F looks like.

```
.text, #text, p{  
    color:#E24A6F  
}
```

If you want to add a text shadow in that color use the text-shadow property, you can generate a text shadow directly with our [CSS Text Shadow Generator](#).

Here you see how black text with a 4 pixel #E24A6F colored shadow looks like.

```
.shadow{ text-shadow: 4px 4px 2px #E24A6F
}
```

## Border

The CSS property to change the border of an element to Decimal 14830191 is called "border". The border property can be set on classes, ids or directly on the HTML element.

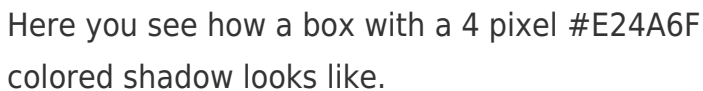
This example shows the color as border, it can be applied via the CSS property "border" or "border-color".

```
.border, #border, table{ border:4px solid
#E24A6F }
```

If only the border color should be changed use the property `border-color`.

```
.border{ border-color:#E24A6F }
```

If you want to add a box shadow in that color use:



Here you see how a box with a 4 pixel `#E24A6F` colored shadow looks like.

```
.boxshadow{ -moz-box-shadow:4px 4px 4px  
4px #E24A6F; -webkit-box-shadow:4px 4px  
4px 4px #E24A6F; box-shadow:4px 4px 4px  
4px #E24A6F }
```

# Background

The CSS property to change the background color of an element to Decimal 14830191 is called "background". The background property can be set on classes, ids or directly on the HTML element.

```
.background, #background, body{  
background:#E24A6F }
```

If only the background color should be changed can be used:

```
.background{ background-color:#E24A6F }
```

This example shows the color as background, it is applied via the CSS property "background".

To optimize and compress your CSS code, you can use our [online CSS compressor and optimizer](#) based on csstidy. If you want to create a linear or radial gradient as background or border, check our [CSS Gradient Generator](#).



Hey! You found this booklet interesting? Support Converting Colors with the new Membership Option!

The pro membership hides all ads, plus gives you double the colors in the color bucket, and more awesome pro features!

**[Learn more, Memberships starting at \\$2.50/m!](#)**

**Follow me  
on Twitter!**

@ConvertingColor