

# Converting Colors

Decimal(14831748)

Have a look what the booklet for  
Decimal(14831748) contains.

<b>Decimal(14831748)</b> .....	3
<i><b>Conversions</b></i> .....	4
<i><b>Details</b></i> .....	6
<i><b>Harmonies</b></i> .....	11
<i><b>Previews</b></i> .....	23
<i><b>Color Blindness Simulation</b></i> .....	26
<i><b>CSS Examples</b></i> .....	29

# Color

**Decimal(14831748)**

# Conversions

## Conversions Part 1

<b>Format</b>	<b>Color</b>
Hex	E25084
RGB	226, 80, 132
RGB Percent	89%, 31%, 52%
CMY	0.1137, 0.6863, 0.4824
CMYK	0.00, 0.65, 0.42, 0.11
HSL	339°, 72%, 60%
HSV	339°, 65%, 89%
XYZ	38.3975, 23.5720, 24.3559
YIQ	129.5820, 70.3240, 47.1240

# Conversions

## Conversions Part 2

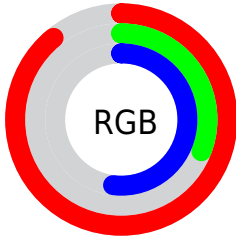
<b>Format</b>	<b>Color</b>
R <sub>Y</sub> B	226, 80, 132
Decimal	14831748
CIE Lab	55.66, 60.76, 2.14
CIE LCh	56, 60.795, 2.016
Yxy	23.5720, 0.4448, 0.2731
Android (android.graphics.Color)	4293021828 (0xFFE25084)
YUV	129.5820, 1.1921, 84.5586
Hunter-Lab	48.5510, 56.2060, 4.2426

# Details

The Decimal color **14831748** is a light color, and the websafe version is hex **FF6699**. The color can be described as light muted rose. A complement of this color would be **5300910**, and the grayscale version is **8553090**.

A 20% lighter version of the original color is **16746937**, and **10880339** is the 20% darker color. If you saturate the color by 10%, you get **14825845**, and if you desaturate by 10%, it is **14837651**.

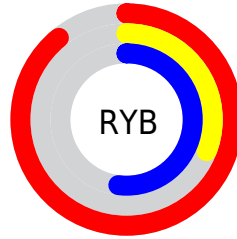
# Distribution



Red (89%)

Green (31%)

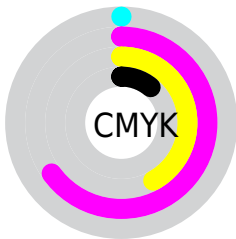
Blue (52%)



Red (89%)

Yellow (31%)

Blue (52%)

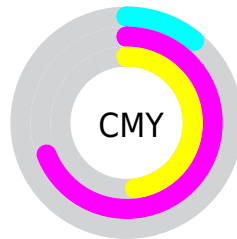


Cyan (0%)

Magenta (65%)

Yellow (42%)

Black (11%)



Cyan (11%)

Magenta (69%)

Yellow (48%)

# Brightness & Saturation Gradients

These gradients show how the Decimal color 14831748 changes by changing the brightness by 10 percent. The first figure shows a shift by +10% for each color and the second figure -10%.

Similar to the brightness gradients but the following saturation gradients show a change of the Decimal color 14831748 by changing the saturation by 10% instead.



 14831748

 14831748

16777215

 12857963

 16746937

 10880339

 16754133

 8912956

 16761585

 7012391

 16769023

 5177362

 16776703

 3342338

 0

 14831748

 14831748

 14825845

 14837651

 14820199

 14843297

 14814296

 14849200

 14811216

 14854846

 14860749

 14866651

 14872298

 14876664

 14876671

# Harmonies

## Analogous

The Analogous color harmony consists of three colors that are next to each other on the color wheel.



13065912



14831748



14637649

# Triad

The Triadic color harmony groups three colors that are evenly spaced from another and form a triangle on the color wheel.



14831748



6722080



38882

# Complementary

The Complementary color scheme is a pair of colors which are on the opposite of each other on the color wheel.



14831748



5300910

# Split Complementary

Split-complementary colors differ from the complementary color scheme. The scheme consists of three colors, the original color and two neighbors of the complement color.



40380



14831748



39505

# Square

The Square scheme is like the rectangle color scheme, but the four colors are evenly spaced on the color wheel.



14831748



10257408



40583



35567

# Rectangle

The Rectangle color scheme consists of four colors that form a rectangle on the color wheel.



14831748



13658162



40583



39640



# Sweetspot

The Sweet Spot groups the original color and five complimentary colors.



14831748



16764896



11292898



8413805



0



8421504



# Same Dimension

The Same Dimension uses a secret algorithm to generate beautiful new colors.



14831748



16726143



14836560



7365993



11534399



3145745



# Inverse Universe

The Inverse Universe completely reimagines the original color for something new.



14831748



16726143



5296098



7365993



11534399



3145745



# Previews

## White Background



This preview shows how the Decimal color 14831748 looks on a white background.

## Color Contrast Check

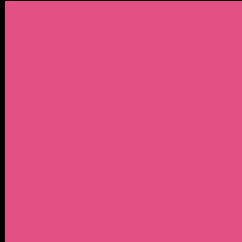
Large Text (above 18pt) WCAG AA ✓ Pass

Any Text WCAG AA × Fail

Large Text (above 18pt) WCAG AAA × Fail

Any Text WCAG AAA × Fail

# Black Background



This preview shows how the Decimal color 14831748 looks on a black background.

## Color Contrast Check

Large Text (above 18pt) WCAG AA ✓ Pass

Any Text WCAG AA ✓ Pass

Large Text (above 18pt) WCAG AAA ✓ Pass

Any Text WCAG AAA × Fail

If you want to check with other color combinations, try the [Color Contrast Checker](#).



## Decimal 14831748 Background



This preview shows how black text looks on a background with the Decimal color 14831748.



This preview shows how white text looks on a background with the Decimal color 14831748.

# Color Blindness Simulation

Color vision deficiency is a very complex topic, and I could not describe the different causes any better than Wikipedia does, so if you want to learn more, you should check out their [article about color blindness](#).


## Dichromacy



**Original Color**  
14831748

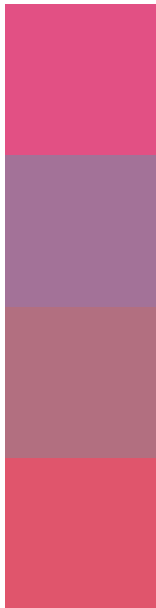
**Protanopia**  
8357284

**Deuteranopia**  
9863549



**Tritanopia**  
14637150

# Trichromacy



**Original Color**  
14831748

**Protanomaly**  
10711704

**Deuteranomaly**  
11693952

**Tritanomaly**  
14701932

# Monochromacy



**Original Color**  
14831748

**Achromatopsia**  
8553090

**Achromatomaly**  
10842243

# CSS Examples

## Text

The CSS property to change the color of the text to Decimal 14831748 is called "color". The color property can be set on classes, ids or directly on the HTML element.

This example shows how text in the color #E25084 looks like.

```
.text, #text, p{  
    color:#E25084  
}
```

If you want to add a text shadow in that color use the text-shadow property, you can generate a text shadow directly with our [CSS Text Shadow Generator](#).

Here you see how black text with a 4 pixel #E25084 colored shadow looks like.

```
.shadow{ text-shadow: 4px 4px 2px #E25084
}
```

## Border

The CSS property to change the border of an element to Decimal 14831748 is called "border". The border property can be set on classes, ids or directly on the HTML element.

This example shows the color as border, it can be applied via the CSS property "border" or "border-color".

```
.border, #border, table{ border:4px solid
#E25084 }
```

If only the border color should be changed use the property `border-color`.

```
.border{ border-color:#E25084 }
```

If you want to add a box shadow in that color use:

Here you see how a box with a 4 pixel #E25084 colored shadow looks like.

```
.boxshadow{ -moz-box-shadow:4px 4px 4px  
4px #E25084; -webkit-box-shadow:4px 4px  
4px 4px #E25084; box-shadow:4px 4px 4px  
4px #E25084 }
```

# Background

The CSS property to change the background color of an element to Decimal 14831748 is called "background". The background property can be set on classes, ids or directly on the HTML element.

```
.background, #background, body{  
background:#E25084 }
```

If only the background color should be changed can be used:

```
.background{ background-color:#E25084 }
```

This example shows the color as background, it is applied via the CSS property "background".

To optimize and compress your CSS code, you can use our [online CSS compressor and optimizer](#) based on csstidy. If you want to create a linear or radial gradient as background or border, check our [CSS Gradient Generator](#).



Hey! You found this booklet interesting? Support Converting Colors with the new Membership Option!

The pro membership hides all ads, plus gives you double the colors in the color bucket, and more awesome pro features!

**[Learn more, Memberships starting at \\$2.50/m!](#)**

**Follow me  
on Twitter!**

@ConvertingColor