

# Converting Colors

Decimal(14833014)

Have a look what the booklet for  
Decimal(14833014) contains.

<b>Decimal(14833014)</b> .....	3
<i><b>Conversions</b></i> .....	4
<i><b>Details</b></i> .....	6
<i><b>Harmonies</b></i> .....	11
<i><b>Previews</b></i> .....	23
<i><b>Color Blindness Simulation</b></i> .....	26
<i><b>CSS Examples</b></i> .....	29

# Color

**Decimal(14833014)**

# Conversions

## Conversions Part 1

<b>Format</b>	<b>Color</b>
Hex	E25576
RGB	226, 85, 118
RGB Percent	89%, 33%, 46%
CMY	0.1137, 0.6667, 0.5373
CMYK	0.00, 0.62, 0.48, 0.11
HSL	346°, 71%, 61%
HSV	346°, 62%, 89%
XYZ	37.8825, 23.9738, 19.7703
YIQ	130.9210, 73.4430, 40.1550

# Conversions

## Conversions Part 2

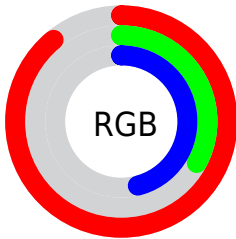
<b>Format</b>	<b>Color</b>
<b>R<sub>YB</sub></b>	226, 85, 118
Decimal	14833014
CIE Lab	56.06, 57.35, 10.99
CIE LCh	56, 58.396, 10.849
Yxy	23.9738, 0.4641, 0.2937
Android (android.graphics.Color)	4293023094 (0xFFE25576)
YUV	130.9210, -6.3701, 83.3843
Hunter-Lab	48.9630, 52.4197, 10.3340

# Details

The Decimal color **14833014** is a dark color, and the websafe version is hex **CC3366**. The color can be described as middle muted rose. A complement of this color would be **5628609**, and the grayscale version is **8618883**.

A 20% lighter version of the original color is **16747946**, and **10884422** is the 20% darker color. If you saturate the color by 10%, you get **14827109**, and if you desaturate by 10%, it is **14838919**.

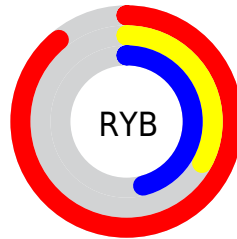
# Distribution



Red (89%)

Green (33%)

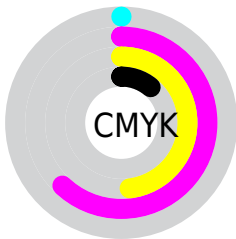
Blue (46%)



Red (89%)

Yellow (33%)

Blue (46%)

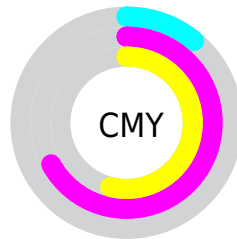


Cyan (0%)

Magenta (62%)

Yellow (48%)

Black (11%)



Cyan (11%)

Magenta (67%)

Yellow (54%)

# Brightness & Saturation Gradients

These gradients show how the Decimal color 14833014 changes by changing the brightness by 10 percent. The first figure shows a shift by +10% for each color and the second figure -10%.

Similar to the brightness gradients but the following saturation gradients show a change of the Decimal color 14833014 by changing the saturation by 10% instead.




 14833014       14833014

16777215       12859485

 16747946       10884422

 16755141       8912944

 16762593       7012380

 16770046       5111808

 3276802

 0

 14833014       14833014

 14827109       14838919

 14821459

 14844569

 14815554

 14850474

 14811189

 14856123

 14862029

 14867934

 14873583

 14876671

# Harmonies

## Analogous

The Analogous color harmony consists of three colors that are next to each other on the color wheel.



13720745



14833014



14181190

# Triad

The Triadic color harmony groups three colors that are evenly spaced from another and form a triangle on the color wheel.



14833014



5740083



38374

# Complementary

The Complementary color scheme is a pair of colors which are on the opposite of each other on the color wheel.



14833014



5628609

# Split Complementary

Split-complementary colors differ from the complementary color scheme. The scheme consists of three colors, the original color and two neighbors of the complement color.



40136



14833014



40035

# Square

The Square scheme is like the rectangle color scheme, but the four colors are evenly spaced on the color wheel.



14833014



9406993



40600



3966698

# Rectangle

The Rectangle color scheme consists of four colors that form a rectangle on the color wheel.



14833014



13005099



40600



39135



# Sweetspot

The Sweet Spot groups the original color and five complimentary colors.



14833014



16764890



12539362



8413801



0



8421504



# Same Dimension

The Same Dimension uses a secret algorithm to generate beautiful new colors.



14833014



16728173



14841941



7365992



11534377



3145739



# Inverse Universe

The Inverse Universe completely reimagines the original color for something new.



14833014



16728173



5619682



7365992



11534377



3145739



# Previews

## White Background



This preview shows how the Decimal color 14833014 looks on a white background.

## Color Contrast Check

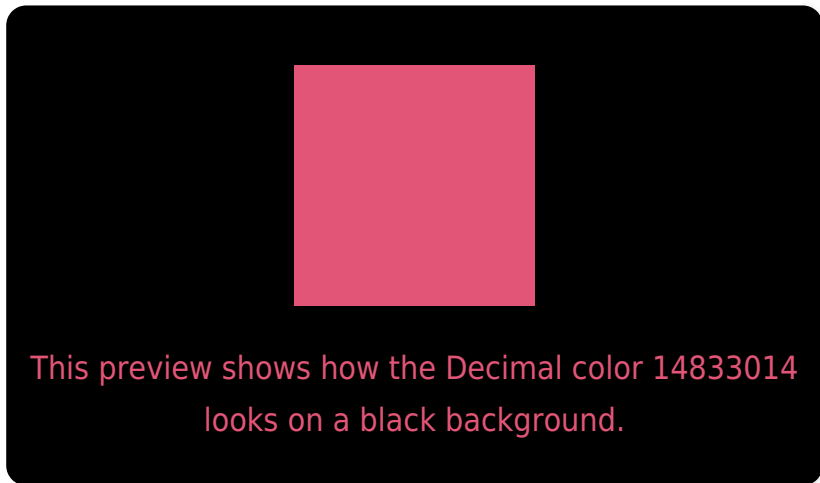
Large Text (above 18pt) WCAG AA ✓ Pass

Any Text WCAG AA × Fail

Large Text (above 18pt) WCAG AAA × Fail

Any Text WCAG AAA × Fail

# Black Background



## Color Contrast Check

Large Text (above 18pt) WCAG AA ✓ Pass

Any Text WCAG AA ✓ Pass

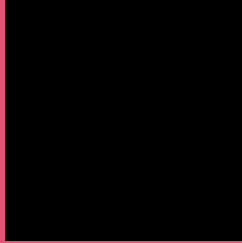
Large Text (above 18pt) WCAG AAA ✓ Pass

Any Text WCAG AAA × Fail

If you want to check with other color combinations, try the [Color Contrast Checker](#).



## Decimal 14833014 Background



This preview shows how black text looks on a background with the Decimal color 14833014.

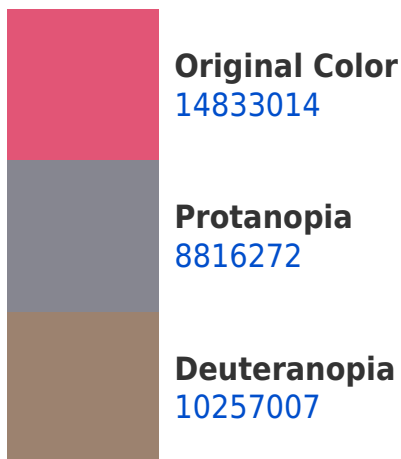


This preview shows how white text looks on a background with the Decimal color 14833014.

# Color Blindness Simulation

Color vision deficiency is a very complex topic, and I could not describe the different causes any better than Wikipedia does, so if you want to learn more, you should check out their [article about color blindness](#).

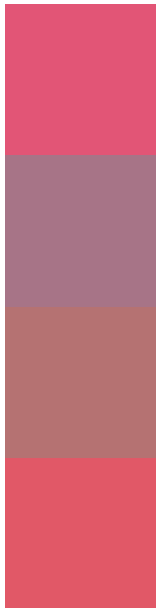
## Dichromacy





**Tritanopia**  
14768479

# Trichromacy



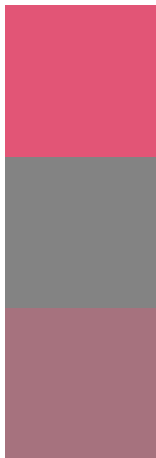
**Original Color**  
14833014

**Protanomaly**  
10974343

**Deuteranomaly**  
11891314

**Tritanomaly**  
14768231

# Monochromacy



**Original Color**  
14833014

**Achromatopsia**  
8618883

**Achromatomaly**  
10908286

# CSS Examples

## Text

The CSS property to change the color of the text to Decimal 14833014 is called "color". The color property can be set on classes, ids or directly on the HTML element.

This example shows how text in the color #E25576 looks like.

```
.text, #text, p{  
    color:#E25576  
}
```

If you want to add a text shadow in that color use the text-shadow property, you can generate a text shadow directly with our [CSS Text Shadow Generator](#).

Here you see how black text with a 4 pixel #E25576 colored shadow looks like.

```
.shadow{ text-shadow: 4px 4px 2px #E25576
}
```

## Border

The CSS property to change the border of an element to Decimal 14833014 is called "border". The border property can be set on classes, ids or directly on the HTML element.

This example shows the color as border, it can be applied via the CSS property "border" or "border-color".

```
.border, #border, table{ border:4px solid
#E25576 }
```

If only the border color should be changed use the property `border-color`.

```
.border{ border-color:#E25576 }
```

If you want to add a box shadow in that color use:

Here you see how a box with a 4 pixel #E25576 colored shadow looks like.

```
.boxshadow{ -moz-box-shadow:4px 4px 4px  
4px #E25576; -webkit-box-shadow:4px 4px  
4px 4px #E25576; box-shadow:4px 4px 4px  
4px #E25576 }
```

# Background

The CSS property to change the background color of an element to Decimal 14833014 is called "background". The background property can be set on classes, ids or directly on the HTML element.

```
.background, #background, body{  
background:#E25576 }
```

If only the background color should be changed can be used:

```
.background{ background-color:#E25576 }
```

This example shows the color as background, it is applied via the CSS property "background".

To optimize and compress your CSS code, you can use our [online CSS compressor and optimizer](#) based on csstidy. If you want to create a linear or radial gradient as background or border, check our [CSS Gradient Generator](#).



Hey! You found this booklet interesting? Support Converting Colors with the new Membership Option!

The pro membership hides all ads, plus gives you double the colors in the color bucket, and more awesome pro features!

**[Learn more, Memberships starting at \\$2.50/m!](#)**

**Follow me  
on Twitter!**

@ConvertingColor