

Converting Colors

Decimal(14840699)

Have a look what the booklet for
Decimal(14840699) contains.

Decimal(14840699)	3
<i>Conversions</i>	4
<i>Details</i>	6
<i>Harmonies</i>	11
<i>Previews</i>	23
<i>Color Blindness Simulation</i>	26
<i>CSS Examples</i>	29

Color

Decimal(14840699)

Conversions

Conversions Part 1

Format	Color
Hex	E2737B
RGB	226, 115, 123
RGB Percent	89%, 45%, 48%
CMY	0.1137, 0.5490, 0.5176
CMYK	0.00, 0.49, 0.46, 0.11
HSL	356°, 66%, 67%
HSV	356°, 49%, 89%
XYZ	41.0699, 29.8603, 22.3379
YIQ	149.1010, 63.5880, 26.0200

Conversions

Conversions Part 2

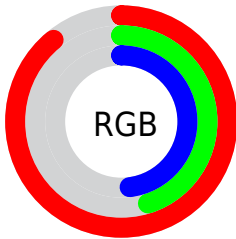
Format	Color
R _Y B	226, 115, 123
Decimal	14840699
CIE Lab	61.53, 43.81, 15.72
CIE LCh	62, 46.545, 19.741
Yxy	29.8603, 0.4403, 0.3202
Android (android.graphics.Color)	4293030779 (0xFFE2737B)
YUV	149.1010, -12.8678, 67.4404
Hunter-Lab	54.6446, 38.5296, 14.0143

Details

The Decimal color **14840699** is a light color, and the websafe version is hex **CC6666**. A complement of this color would be **7594714**, and the grayscale version is **9803157**.

A 20% lighter version of the original color is **16755119**, and **10960714** is the 20% darker color. If you saturate the color by 10%, you get **14834790**, and if you desaturate by 10%, it is **14846608**.

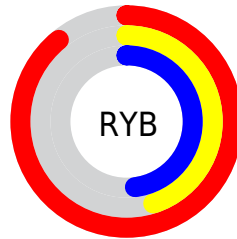
Distribution



Red (89%)

Green (45%)

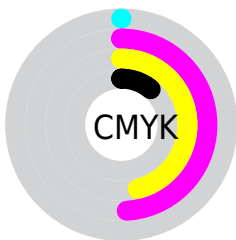
Blue (48%)



Red (89%)

Yellow (45%)

Blue (48%)

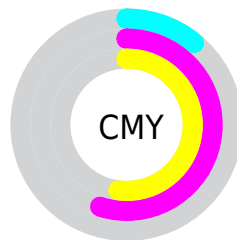


Cyan (0%)

Magenta (49%)

Yellow (46%)

Black (11%)



Cyan (11%)

Magenta (55%)

Yellow (52%)

Brightness & Saturation Gradients

These gradients show how the Decimal color 14840699 changes by changing the brightness by 10 percent. The first figure shows a shift by +10% for each color and the second figure -10%.

Similar to the brightness gradients but the following saturation gradients show a change of the Decimal color 14840699 by changing the saturation by 10% instead.

 14840699

 14840699

16777215

 12867938

 16755119

 10960714

 16762315


 9053236

 16769767

 7143711

 5373959

 3670017

 1114112

 0

 14840699

 14840699

 14834790

 14846608

 14829137

 14852261

 14823228

 14858170

 14817575

 14863823

 14811666

 14869732

 14811152

 14875641

 14876671

Harmonies

Analogous

The Analogous color harmony consists of three colors that are next to each other on the color wheel.



14316453



14840699



13991511

Triad

The Triadic color harmony groups three colors that are evenly spaced from another and form a triangle on the color wheel.



14840699



6464605



368101

Complementary

The Complementary color scheme is a pair of colors which are on the opposite of each other on the color wheel.



14840699



7594714

Split Complementary

Split-complementary colors differ from the complementary color scheme. The scheme consists of three colors, the original color and two neighbors of the complement color.



42706



14840699



43397

Square

The Square scheme is like the rectangle color scheme, but the four colors are evenly spaced on the color wheel.



14840699



9608004



43439



8425442

Rectangle

The Rectangle color scheme consists of four colors that form a rectangle on the color wheel.



14840699



12879943



43439



41441

Sweetspot

The Sweet Spot groups the original color and five complimentary colors.



14840699



16767452



14250978



8415594



0



8421504

Same Dimension

The Same Dimension uses a secret algorithm to generate beautiful new colors.



14840699



16738675



14852467



7365990



11534349



3145731

Inverse Universe

The Inverse Universe completely reimagines the original color for something new.



14840699



16738675



7582946



7365990



11534349



3145731

Previews

White Background



This preview shows how the Decimal color 14840699 looks on a white background.

Color Contrast Check

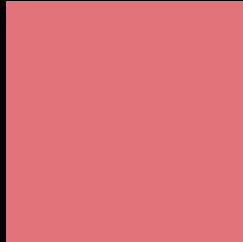
Large Text (above 18pt) WCAG AA ✓ Pass

Any Text WCAG AA × Fail

Large Text (above 18pt) WCAG AAA × Fail

Any Text WCAG AAA × Fail

Black Background



This preview shows how the Decimal color 14840699 looks on a black background.

Color Contrast Check

Large Text (above 18pt) WCAG AA ✓ Pass

Any Text WCAG AA ✓ Pass

Large Text (above 18pt) WCAG AAA ✓ Pass

Any Text WCAG AAA × Fail

If you want to check with other color combinations, try the [Color Contrast Checker](#).

Decimal 14840699 Background



This preview shows how black text looks on a background with the Decimal color 14840699.



This preview shows how white text looks on a background with the Decimal color 14840699.

Color Blindness Simulation

Color vision deficiency is a very complex topic, and I could not describe the different causes any better than Wikipedia does, so if you want to learn more, you should check out their [article about color blindness](#).

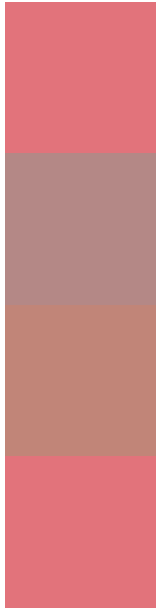
Dichromacy





Tritanopia
14840699

Trichromacy



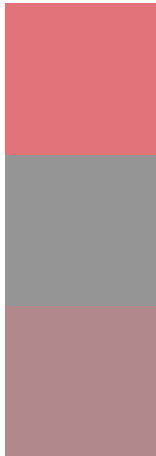
Original Color
14840699

Protanomaly
11831430

Deuteranomaly
12682616

Tritanomaly
14840699

Monochromacy



Original Color
14840699

Achromatopsia
9803157

Achromatomaly
11635084

CSS Examples

Text

The CSS property to change the color of the text to Decimal 14840699 is called "color". The color property can be set on classes, ids or directly on the HTML element.

This example shows how text in the color #E2737B looks like.

```
.text, #text, p{  
  color:#E2737B  
}
```

If you want to add a text shadow in that color use the text-shadow property, you can generate a text shadow directly with our [CSS Text Shadow Generator](#).

Here you see how black text with a 4 pixel #E2737B colored shadow looks like.

```
.shadow{ text-shadow: 4px 4px 2px #E2737B
}
```

Border

The CSS property to change the border of an element to Decimal 14840699 is called "border". The border property can be set on classes, ids or directly on the HTML element.

This example shows the color as border, it can be applied via the CSS property "border" or "border-color".

```
.border, #border, table{ border:4px solid
#E2737B }
```

If only the border color should be changed use the property `border-color`.

```
.border{ border-color:#E2737B }
```

If you want to add a box shadow in that color use:

Here you see how a box with a 4 pixel #E2737B colored shadow looks like.

```
.boxshadow{ -moz-box-shadow:4px 4px 4px  
4px #E2737B; -webkit-box-shadow:4px 4px  
4px 4px #E2737B; box-shadow:4px 4px 4px  
4px #E2737B }
```

Background

The CSS property to change the background color of an element to Decimal 14840699 is called "background". The background property can be set on classes, ids or directly on the HTML element.

```
.background, #background, body{  
background:#E2737B }
```

If only the background color should be changed can be used:

```
.background{ background-color:#E2737B }
```

This example shows the color as background, it is applied via the CSS property "background".

To optimize and compress your CSS code, you can use our [online CSS compressor and optimizer](#) based on csstidy. If you want to create a linear or radial gradient as background or border, check our [CSS Gradient Generator](#).

Hey! You found this booklet interesting? Support Converting Colors with the new Membership Option!

The pro membership hides all ads, plus gives you double the colors in the color bucket, and more awesome pro features!

[Learn more, Memberships starting at \\$2.50/m!](#)

**Follow me
on Twitter!**

@ConvertingColor