

# Converting Colors

Decimal(14840719)

Have a look what the booklet for  
Decimal(14840719) contains.

<b>Decimal(14840719)</b> .....	3
<i><b>Conversions</b></i> .....	4
<i><b>Details</b></i> .....	6
<i><b>Harmonies</b></i> .....	11
<i><b>Previews</b></i> .....	23
<i><b>Color Blindness Simulation</b></i> .....	26
<i><b>CSS Examples</b></i> .....	29

# **Color**

**Decimal(14840719)**

# Conversions

## Conversions Part 1

<b>Format</b>	<b>Color</b>
Hex	E2738F
RGB	226, 115, 143
RGB Percent	89%, 45%, 56%
CMY	0.1137, 0.5490, 0.4392
CMYK	0.00, 0.49, 0.37, 0.11
HSL	345°, 66%, 67%
HSV	345°, 49%, 89%
XYZ	42.4527, 30.4134, 29.6195
YIQ	151.3810, 57.1680, 32.2400

# Conversions

## Conversions Part 2

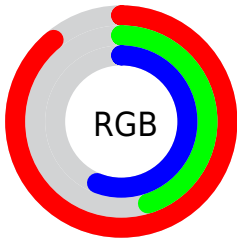
<b>Format</b>	<b>Color</b>
R <sub>Y</sub> B	226, 115, 143
Decimal	14840719
CIE Lab	62.01, 45.95, 4.91
CIE LCh	62, 46.216, 6.098
Yxy	30.4134, 0.4142, 0.2968
Android (android.graphics.Color)	4293030799 (0xFFE2738F)
YUV	151.3810, -4.1318, 65.4409
Hunter-Lab	55.1483, 40.8981, 6.7599

# Details

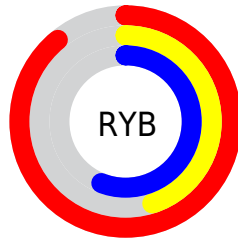
The Decimal color **14840719** is a light color, and the websafe version is hex **CC6699**. A complement of this color would be **7594694**, and the grayscale version is **9934743**.

A 20% lighter version of the original color is **16755141**, and **10960477** is the 20% darker color. If you saturate the color by 10%, you get **14834814**, and if you desaturate by 10%, it is **14846624**.

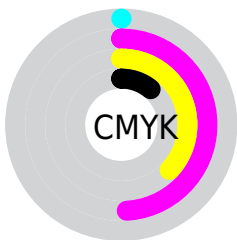
# Distribution



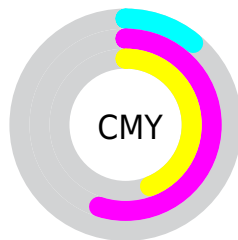
- Red (89%)
- Green (45%)
- Blue (56%)



- Red (89%)
- Yellow (45%)
- Blue (56%)



- Cyan (0%)
- Magenta (49%)
- Yellow (37%)
- Black (11%)



- Cyan (11%)
- Magenta (55%)
- Yellow (44%)

# Brightness & Saturation Gradients

These gradients show how the Decimal color 14840719 changes by changing the brightness by 10 percent. The first figure shows a shift by +10% for each color and the second figure -10%.

Similar to the brightness gradients but the following saturation gradients show a change of the Decimal color 14840719 by changing the saturation by 10% instead.



 14840719

 14840719

16777215

 12867957

 16755141

 10960477

 16762593

 9118533

 16769789

 7274543

 5439515

 3866625

 1572865

 0

 14840719

 14840719

 14834814

 14846624

 14829165

 14852273

 14823260

 14858178

 14817611

 14863827

 14811707

 14869731

 14811193

 14875636

 14876671

# Harmonies

## Analogous

The Analogous color harmony consists of three colors that are next to each other on the color wheel.



13597112



14840719



14580328

# Triad

The Triadic color harmony groups three colors that are evenly spaced from another and form a triangle on the color wheel.



14840719



8102225



41952

# Complementary

The Complementary color scheme is a pair of colors which are on the opposite of each other on the color wheel.



14840719



7594694

# Split Complementary

Split-complementary colors differ from the complementary color scheme. The scheme consists of three colors, the original color and two neighbors of the complement color.



43461



14840719



4302963

# Square

The Square scheme is like the rectangle color scheme, but the four colors are evenly spaced on the color wheel.



14840719



10917441



43933



6199271

# Rectangle

The Rectangle color scheme consists of four colors that form a rectangle on the color wheel.



14840719



13796179



43933



42713



# Sweetspot

The Sweet Spot groups the original color and five complimentary colors.



14840719



16767458



12874722



8415598



0



8421504



# Same Dimension

The Same Dimension uses a secret algorithm to generate beautiful new colors.



14840719



16738703



14847347



7365992



11534380



3145740



# Inverse Universe

The Inverse Universe completely reimagines the original color for something new.



14840719



16738703



7588066



7365992



11534380



3145740



# Previews

## White Background



This preview shows how the Decimal color 14840719 looks on a white background.

## Color Contrast Check

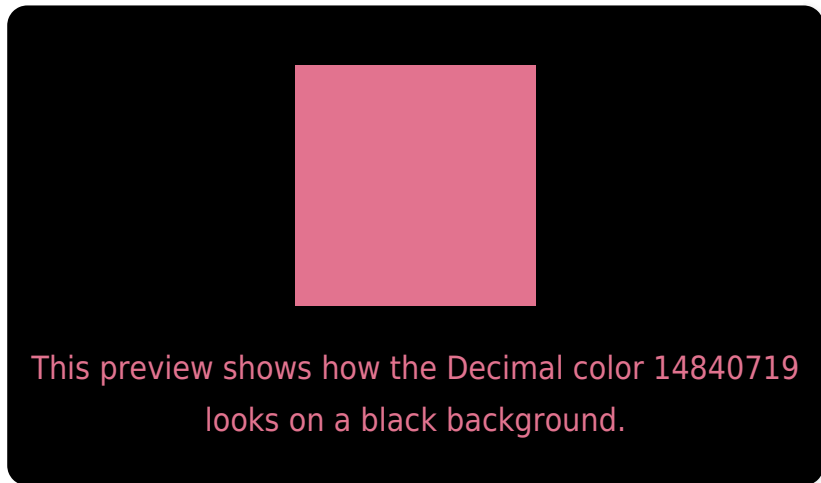
Large Text (above 18pt) WCAG AA × Fail

Any Text WCAG AA × Fail

Large Text (above 18pt) WCAG AAA × Fail

Any Text WCAG AAA × Fail

# Black Background



## Color Contrast Check

Large Text (above 18pt) WCAG AA ✓ Pass

Any Text WCAG AA ✓ Pass

Large Text (above 18pt) WCAG AAA ✓ Pass

Any Text WCAG AAA ✓ Pass

If you want to check with other color combinations, try the [Color Contrast Checker](#).



## Decimal 14840719 Background



This preview shows how black text looks on a background with the Decimal color 14840719.



This preview shows how white text looks on a background with the Decimal color 14840719.

# Color Blindness Simulation

Color vision deficiency is a very complex topic, and I could not describe the different causes any better than Wikipedia does, so if you want to learn more, you should check out their [article about color blindness](#).

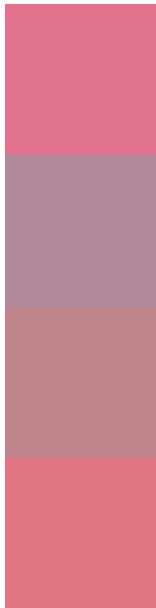
## Dichromacy





**Tritanopia**  
14775934

# Trichromacy



**Original Color**  
14840719

**Protanomaly**  
11635100

**Deuteranomaly**  
12486284

**Tritanomaly**  
14775684

# Monochromacy



**Original Color**  
14840719

**Achromatopsia**  
9934743

**Achromatomaly**  
11700884

# CSS Examples

## Text

The CSS property to change the color of the text to Decimal 14840719 is called "color". The color property can be set on classes, ids or directly on the HTML element.

This example shows how text in the color #E2738F looks like.

```
.text, #text, p{  
  color:#E2738F  
}
```

If you want to add a text shadow in that color use the text-shadow property, you can generate a text shadow directly with our [CSS Text Shadow Generator](#).

Here you see how black text with a 4 pixel #E2738F colored shadow looks like.

```
.shadow{ text-shadow: 4px 4px 2px #E2738F
}
```

## Border

The CSS property to change the border of an element to Decimal 14840719 is called "border". The border property can be set on classes, ids or directly on the HTML element.

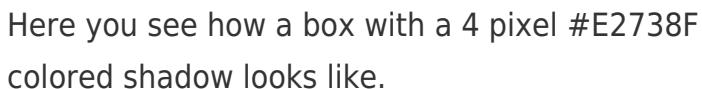
This example shows the color as border, it can be applied via the CSS property "border" or "border-color".

```
.border, #border, table{ border:4px solid
#E2738F }
```

If only the border color should be changed use the property `border-color`.

```
.border{ border-color:#E2738F }
```

If you want to add a box shadow in that color use:



Here you see how a box with a 4 pixel `#E2738F` colored shadow looks like.

```
.boxshadow{ -moz-box-shadow:4px 4px 4px  
4px #E2738F; -webkit-box-shadow:4px 4px  
4px 4px #E2738F; box-shadow:4px 4px 4px  
4px #E2738F }
```

# Background

The CSS property to change the background color of an element to Decimal 14840719 is called "background". The background property can be set on classes, ids or directly on the HTML element.

```
.background, #background, body{  
background:#E2738F }
```

If only the background color should be changed can be used:

```
.background{ background-color:#E2738F }
```

This example shows the color as background, it is applied via the CSS property "background".

To optimize and compress your CSS code, you can use our [online CSS compressor and optimizer](#) based on csstidy. If you want to create a linear or radial gradient as background or border, check our [CSS Gradient Generator](#).



Hey! You found this booklet interesting? Support Converting Colors with the new Membership Option!

The pro membership hides all ads, plus gives you double the colors in the color bucket, and more awesome pro features!

**[Learn more, Memberships starting at \\$2.50/m!](#)**

**Follow me  
on Twitter!**

@ConvertingColor