

Converting Colors

Decimal(14845080)

Have a look what the booklet for
Decimal(14845080) contains.

| | |
|--|----|
| Decimal(14845080) | 3 |
| <i>Conversions</i> | 4 |
| <i>Details</i> | 6 |
| <i>Harmonies</i> | 11 |
| <i>Previews</i> | 23 |
| <i>Color Blindness Simulation</i> | 26 |
| <i>CSS Examples</i> | 29 |

Color

Decimal(14845080)

Conversions

Conversions Part 1

| Format | Color |
|---------------|----------------------------|
| Hex | E28498 |
| RGB | 226, 132, 152 |
| RGB Percent | 89%, 52%, 60% |
| CMY | 0.1137, 0.4824, 0.4039 |
| CMYK | 0.00, 0.42, 0.33, 0.11 |
| HSL | 347°, 62%, 70% |
| HSV | 347°, 42%, 89% |
| XYZ | 45.2828, 34.9383, 34.0629 |
| YIQ | 162.3860, 49.6040, 26.1480 |

Conversions

Conversions Part 2

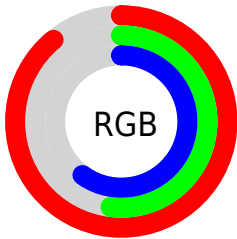
| Format | Color |
|-------------------------------------|-------------------------------|
| R _Y B | 226, 132, 152 |
| Decimal | 14845080 |
| CIE Lab | 65.70, 38.35, 5.09 |
| CIE LCh | 66, 38.691, 7.564 |
| Yxy | 34.9383, 0.3962, 0.3057 |
| Android (android.graphics.Color) | 4293035160 (0xFFE28498) |
| YUV | 162.3860, -5.1203, 55.7895 |
| Hunter-Lab | 59.1086, 33.3078, 7.2086 |

Details

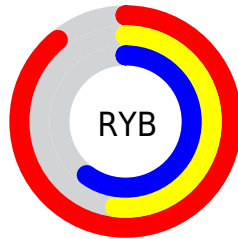
The Decimal color **14845080** is a light color, and the websafe version is hex **FF9999**. A complement of this color would be **8708814**, and the grayscale version is **10658466**.

A 20% lighter version of the original color is **16759502**, and **11030629** is the 20% darker color. If you saturate the color by 10%, you get **14839174**, and if you desaturate by 10%, it is **14850986**.

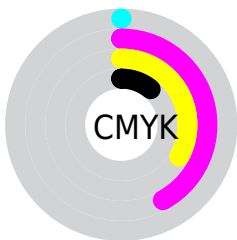
Distribution



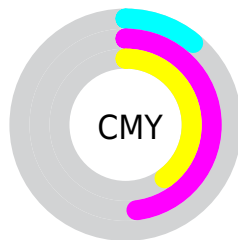
- Red (89%)
- Green (52%)
- Blue (60%)



- Red (89%)
- Yellow (52%)
- Blue (60%)



- Cyan (0%)
- Magenta (42%)
- Yellow (33%)
- Black (11%)



- Cyan (11%)
- Magenta (48%)
- Yellow (40%)

Brightness & Saturation Gradients

These gradients show how the Decimal color 14845080 changes by changing the brightness by 10 percent. The first figure shows a shift by +10% for each color and the second figure -10%.

Similar to the brightness gradients but the following saturation gradients show a change of the Decimal color 14845080 by changing the saturation by 10% instead.

 14845080

 14845080

16777215

 12937854

 16759502

 11030629

 16766954

 9189197

 16774143

 7413047

 5636130

 3932170

 2228225

 0

 14845080

 14845080

 14839174

 14850986

 14833524

 14856636

 14827619

 14862541

 14821969

 14868191

 14816063

 14874097

 14811184

 14876671

Harmonies

Analogous

The Analogous color harmony consists of three colors that are next to each other on the color wheel.



13797563



14845080



14649719

Triad

The Triadic color harmony groups three colors that are evenly spaced from another and form a triangle on the color wheel.



14845080



8956519



3517151

Complementary

The Complementary color scheme is a pair of colors which are on the opposite of each other on the color wheel.



14845080



8708814

Split Complementary

Split-complementary colors differ from the complementary color scheme. The scheme consists of three colors, the original color and two neighbors of the complement color.



45257



14845080



6074500

Square

The Square scheme is like the rectangle color scheme, but the four colors are evenly spaced on the color wheel.



14845080



11378778



2077352



8036580

Rectangle

The Rectangle color scheme consists of four colors that form a rectangle on the color wheel.



14845080



13865062



2077352



1093081

Sweetspot

The Sweet Spot groups the original color and five complimentary colors.



14845080



16769255



13534434



8416881



0



8421504

Same Dimension

The Same Dimension uses a secret algorithm to generate beautiful new colors.



14845080



16744603



14851972



7365991



11534373



3145738

Inverse Universe

The Inverse Universe completely reimagines the original color for something new.



14845080



16744603



8701922



7365991



11534373



3145738

Previews

White Background



This preview shows how the Decimal color 14845080 looks on a white background.

Color Contrast Check

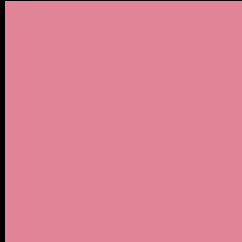
Large Text (above 18pt) WCAG AA × Fail

Any Text WCAG AA × Fail

Large Text (above 18pt) WCAG AAA × Fail

Any Text WCAG AAA × Fail

Black Background



This preview shows how the Decimal color 14845080 looks on a black background.

Color Contrast Check

Large Text (above 18pt) WCAG AA ✓ Pass

Any Text WCAG AA ✓ Pass

Large Text (above 18pt) WCAG AAA ✓ Pass

Any Text WCAG AAA ✓ Pass

If you want to check with other color combinations, try the [Color Contrast Checker](#).

Decimal 14845080 Background



This preview shows how black text looks on a background with the Decimal color 14845080.



This preview shows how white text looks on a background with the Decimal color 14845080.

Color Blindness Simulation

Color vision deficiency is a very complex topic, and I could not describe the different causes any better than Wikipedia does, so if you want to learn more, you should check out their [article about color blindness](#).

Dichromacy



Original Color
14845080

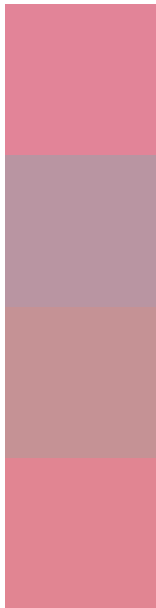
Protanopia
10592167

Deuteranopia
11836052



Tritanopia
14779791

Trichromacy



Original Color
14845080

Protanomaly
12162466

Deuteranomaly
12948117

Tritanomaly
14779794

Monochromacy



Original Color
14845080

Achromatopsia
10658466

Achromatomaly
12162974

CSS Examples

Text

The CSS property to change the color of the text to Decimal 14845080 is called "color". The color property can be set on classes, ids or directly on the HTML element.

This example shows how text in the color #E28498 looks like.

```
.text, #text, p{  
    color:#E28498  
}
```

If you want to add a text shadow in that color use the text-shadow property, you can generate a text shadow directly with our [CSS Text Shadow Generator](#).

Here you see how black text with a 4 pixel #E28498 colored shadow looks like.

```
.shadow{ text-shadow: 4px 4px 2px #E28498
}
```

Border

The CSS property to change the border of an element to Decimal 14845080 is called "border". The border property can be set on classes, ids or directly on the HTML element.

This example shows the color as border, it can be applied via the CSS property "border" or "border-color".

```
.border, #border, table{ border:4px solid
#E28498 }
```

If only the border color should be changed use the property `border-color`.

```
.border{ border-color:#E28498 }
```

If you want to add a box shadow in that color use:

Here you see how a box with a 4 pixel #E28498 colored shadow looks like.

```
.boxshadow{ -moz-box-shadow:4px 4px 4px  
4px #E28498; -webkit-box-shadow:4px 4px  
4px 4px #E28498; box-shadow:4px 4px 4px  
4px #E28498 }
```

Background

The CSS property to change the background color of an element to Decimal 14845080 is called "background". The background property can be set on classes, ids or directly on the HTML element.

```
.background, #background, body{  
background:#E28498 }
```

If only the background color should be changed can be used:

```
.background{ background-color:#E28498 }
```

This example shows the color as background, it is applied via the CSS property "background".

To optimize and compress your CSS code, you can use our [online CSS compressor and optimizer](#) based on csstidy. If you want to create a linear or radial gradient as background or border, check our [CSS Gradient Generator](#).

Hey! You found this booklet interesting? Support Converting Colors with the new Membership Option!

The pro membership hides all ads, plus gives you double the colors in the color bucket, and more awesome pro features!

[Learn more, Memberships starting at \\$2.50/m!](#)

**Follow me
on Twitter!**

@ConvertingColor