

Converting Colors

Decimal(14848677)

Have a look what the booklet for
Decimal(14848677) contains.

Decimal(14848677)	3
<i>Conversions</i>	4
<i>Details</i>	6
<i>Harmonies</i>	11
<i>Previews</i>	23
<i>Color Blindness Simulation</i>	26
<i>CSS Examples</i>	29

Color

Decimal(14848677)

Conversions

Conversions Part 1

Format	Color
Hex	E292A5
RGB	226, 146, 165
RGB Percent	89%, 57%, 65%
CMY	0.1137, 0.4275, 0.3529
CMYK	0.00, 0.35, 0.27, 0.11
HSL	346°, 58%, 73%
HSV	346°, 35%, 89%
XYZ	48.4344, 39.4431, 40.6578
YIQ	172.0860, 41.5810, 22.8690

Conversions

Conversions Part 2

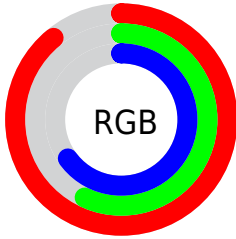
Format	Color
R _Y B	226, 146, 165
Decimal	14848677
CIE Lab	69.07, 32.68, 2.65
CIE LCh	69, 32.792, 4.642
Yxy	39.4431, 0.3768, 0.3069
Android (android.graphics.Color)	4293038757 (0xFFE292A5)
YUV	172.0860, -3.4934, 47.2826
Hunter-Lab	62.8038, 27.7531, 5.5796

Details

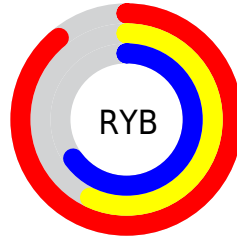
The Decimal color **14848677** is a light color, and the websafe version is hex **CC9999**. A complement of this color would be **9626319**, and the grayscale version is **11316396**.

A 20% lighter version of the original color is **16763356**, and **11099761** is the 20% darker color. If you saturate the color by 10%, you get **14842772**, and if you desaturate by 10%, it is **14854582**.

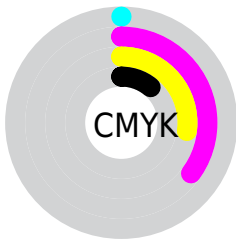
Distribution



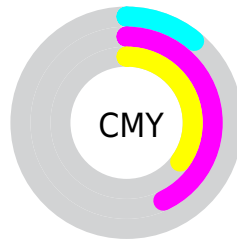
- Red (89%)
- Green (57%)
- Blue (65%)



- Red (89%)
- Yellow (57%)
- Blue (65%)



- Cyan (0%)
- Magenta (35%)
- Yellow (27%)
- Black (11%)



- Cyan (11%)
- Magenta (43%)
- Yellow (35%)

Brightness & Saturation Gradients

These gradients show how the Decimal color 14848677 changes by changing the brightness by 10 percent. The first figure shows a shift by +10% for each color and the second figure -10%.

Similar to the brightness gradients but the following saturation gradients show a change of the Decimal color 14848677 by changing the saturation by 10% instead.

 14848677

 14848677

16777215

 12941451

 16763356

 11099761

 16770552

 9258329

 7482690

 5772332

 4063255

 2752513

 0

 14848677

 14848677

 14842772

 14854582

 14837123

 14860231

 14831217

 14866137

 14825568

 14871786

 14819663

 14876667

 14813758

 14876671

 14811190

Harmonies

Analogous

The Analogous color harmony consists of three colors that are next to each other on the color wheel.



13801155



14848677



14783880

Triad

The Triadic color harmony groups three colors that are evenly spaced from another and form a triangle on the color wheel.



14848677



10006903



5944029

Complementary

The Complementary color scheme is a pair of colors which are on the opposite of each other on the color wheel.



14848677



9626319

Split Complementary

Split-complementary colors differ from the complementary color scheme. The scheme consists of three colors, the original color and two neighbors of the complement color.



4307145



14848677



7714702

Square

The Square scheme is like the rectangle color scheme, but the four colors are evenly spaced on the color wheel.



14848677



12101741



5487020



8891107

Rectangle

The Rectangle color scheme consists of four colors that form a rectangle on the color wheel.



14848677



14195577



5487020



5158360

Sweetspot

The Sweet Spot groups the original color and five complimentary colors.



14848677



16770026



13538018



8417139



0



8421504

Same Dimension

The Same Dimension uses a secret algorithm to generate beautiful new colors.



14848677



16749741



14853778



7365992



11534378



3145740

Inverse Universe

The Inverse Universe completely reimagines the original color for something new.



14848677



16749741



9621218



7365992



11534378



3145740

Previews

White Background



This preview shows how the Decimal color 14848677 looks on a white background.

Color Contrast Check

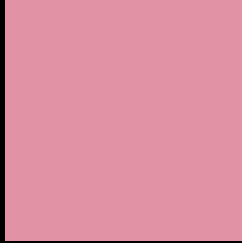
Large Text (above 18pt) WCAG AA × Fail

Any Text WCAG AA × Fail

Large Text (above 18pt) WCAG AAA × Fail

Any Text WCAG AAA × Fail

Black Background



This preview shows how the Decimal color 14848677 looks on a black background.

Color Contrast Check

Large Text (above 18pt) WCAG AA ✓ Pass

Any Text WCAG AA ✓ Pass

Large Text (above 18pt) WCAG AAA ✓ Pass

Any Text WCAG AAA ✓ Pass

If you want to check with other color combinations, try the [Color Contrast Checker](#).

Decimal 14848677 Background



This preview shows how black text looks on a background with the Decimal color 14848677.



This preview shows how white text looks on a background with the Decimal color 14848677.

Color Blindness Simulation

Color vision deficiency is a very complex topic, and I could not describe the different causes any better than Wikipedia does, so if you want to learn more, you should check out their [article about color blindness](#).

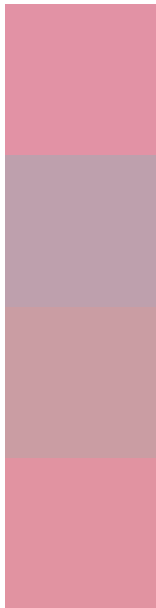
Dichromacy





Tritanopia
14783390

Trichromacy



Original Color
14848677

Protanomaly
12492973

Deuteranomaly
13278627

Tritanomaly
14783393

Monochromacy



Original Color
14848677

Achromatopsia
11316396

Achromatomaly
12624809

CSS Examples

Text

The CSS property to change the color of the text to Decimal 14848677 is called "color". The color property can be set on classes, ids or directly on the HTML element.

This example shows how text in the color #E292A5 looks like.

```
.text, #text, p{  
    color:#E292A5  
}
```

If you want to add a text shadow in that color use the text-shadow property, you can generate a text shadow directly with our [CSS Text Shadow Generator](#).

Here you see how black text with a 4 pixel #E292A5 colored shadow looks like.

```
.shadow{ text-shadow: 4px 4px 2px #E292A5
}
```

Border

The CSS property to change the border of an element to Decimal 14848677 is called "border". The border property can be set on classes, ids or directly on the HTML element.

This example shows the color as border, it can be applied via the CSS property "border" or "border-color".

```
.border, #border, table{ border:4px solid
#E292A5 }
```

If only the border color should be changed use the property `border-color`.

```
.border{ border-color:#E292A5 }
```

If you want to add a box shadow in that color use:

Here you see how a box with a 4 pixel #E292A5 colored shadow looks like.

```
.boxshadow{ -moz-box-shadow:4px 4px 4px  
4px #E292A5; -webkit-box-shadow:4px 4px  
4px 4px #E292A5; box-shadow:4px 4px 4px  
4px #E292A5 }
```

Background

The CSS property to change the background color of an element to Decimal 14848677 is called "background". The background property can be set on classes, ids or directly on the HTML element.

```
.background, #background, body{  
background:#E292A5 }
```

If only the background color should be changed can be used:

```
.background{ background-color:#E292A5 }
```

This example shows the color as background, it is applied via the CSS property "background".

To optimize and compress your CSS code, you can use our [online CSS compressor and optimizer](#) based on csstidy. If you want to create a linear or radial gradient as background or border, check our [CSS Gradient Generator](#).

Hey! You found this booklet interesting? Support Converting Colors with the new Membership Option!

The pro membership hides all ads, plus gives you double the colors in the color bucket, and more awesome pro features!

[Learn more, Memberships starting at \\$2.50/m!](#)

**Follow me
on Twitter!**

@ConvertingColor