

Converting Colors

Decimal(14853811)

Have a look what the booklet for
Decimal(14853811) contains.

Decimal(14853811)	3
<i>Conversions</i>	4
<i>Details</i>	6
<i>Harmonies</i>	11
<i>Previews</i>	23
<i>Color Blindness Simulation</i>	26
<i>CSS Examples</i>	29

Color

Decimal(14853811)

Conversions

Conversions Part 1

Format	Color
Hex	E2A6B3
RGB	226, 166, 179
RGB Percent	89%, 65%, 70%
CMY	0.1137, 0.3490, 0.2980
CMYK	0.00, 0.27, 0.21, 0.11
HSL	347°, 51%, 77%
HSV	347°, 27%, 89%
XYZ	53.1369, 46.6959, 48.8604
YIQ	185.4220, 31.5870, 16.7630

Conversions

Conversions Part 2

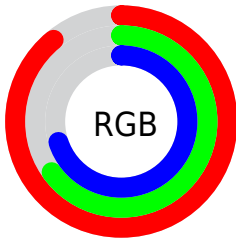
Format	Color
R _Y B	226, 166, 179
Decimal	14853811
CIE Lab	73.99, 23.99, 2.04
CIE LCh	74, 24.076, 4.871
Yxy	46.6959, 0.3574, 0.3140
Android (android.graphics.Color)	4293043891 (0xFFE2A6B3)
YUV	185.4220, -3.1660, 35.5869
Hunter-Lab	68.3344, 19.2168, 5.4406

Details

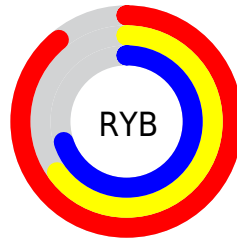
The Decimal color **14853811** is a light color, and the websafe version is hex **CC9999**. A complement of this color would be **10937045**, and the grayscale version is **12171705**.

A 20% lighter version of the original color is **16768491**, and **11170430** is the 20% darker color. If you saturate the color by 10%, you get **14847905**, and if you desaturate by 10%, it is **14859717**.

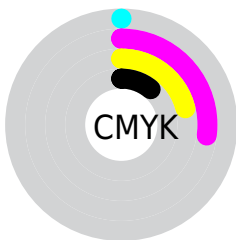
Distribution



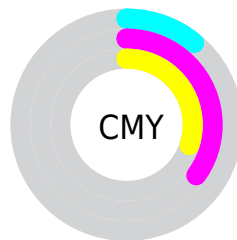
- Red (89%)
- Green (65%)
- Blue (70%)



- Red (89%)
- Yellow (65%)
- Blue (70%)



- Cyan (0%)
- Magenta (27%)
- Yellow (21%)
- Black (11%)



- Cyan (11%)
- Magenta (35%)
- Yellow (30%)

Brightness & Saturation Gradients

These gradients show how the Decimal color 14853811 changes by changing the brightness by 10 percent. The first figure shows a shift by +10% for each color and the second figure -10%.

Similar to the brightness gradients but the following saturation gradients show a change of the Decimal color 14853811 by changing the saturation by 10% instead.


 14853811

 14853811

16777215

 13011864

 16768491

 11170430

 16775935

 9394533

 7618894

 5909047

 4330274

 2818059

 0

 14853811

 14853811

 14847905

 14859717

 14842256

 14865366

 14836350

 14871272

 14830700

 14876666

 14824794

 14876671

 14818889

 14813239

 14811185

Harmonies

Analogous

The Analogous color harmony consists of three colors that are next to each other on the color wheel.



14068169



14853811



14854302

Triad

The Triadic color harmony groups three colors that are evenly spaced from another and form a triangle on the color wheel.



14853811



11189393



8764893

Complementary

The Complementary color scheme is a pair of colors which are on the opposite of each other on the color wheel.



14853811



10937045

Split Complementary

Split-complementary colors differ from the complementary color scheme. The scheme consists of three colors, the original color and two neighbors of the complement color.



7848398



14853811



9552290

Square

The Square scheme is like the rectangle color scheme, but the four colors are evenly spaced on the color wheel.



14853811



12826250



8242105



10532834

Rectangle

The Rectangle color scheme consists of four colors that form a rectangle on the color wheel.



14853811



14396563



8242105



8306649

Sweetspot

The Sweet Spot groups the original color and five complimentary colors.



14853811



16772079



14001890



8418166



0



8421504

Same Dimension

The Same Dimension uses a secret algorithm to generate beautiful new colors.



14853811



16756159



14858150



7365991



11534374



3145738

Inverse Universe

The Inverse Universe completely reimagines the original color for something new.



14853811



16756159



10932706



7365991



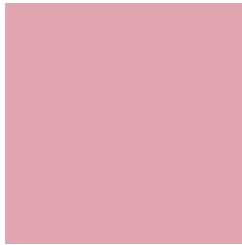
11534374



3145738

Previews

White Background



This preview shows how the Decimal color 14853811 looks on a white background.

Color Contrast Check

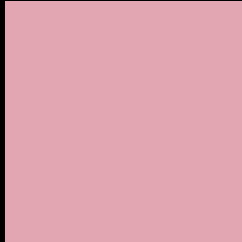
Large Text (above 18pt) WCAG AA × Fail

Any Text WCAG AA × Fail

Large Text (above 18pt) WCAG AAA × Fail

Any Text WCAG AAA × Fail

Black Background



This preview shows how the Decimal color 14853811 looks on a black background.

Color Contrast Check

Large Text (above 18pt) WCAG AA ✓ Pass

Any Text WCAG AA ✓ Pass

Large Text (above 18pt) WCAG AAA ✓ Pass

Any Text WCAG AAA ✓ Pass

If you want to check with other color combinations, try the [Color Contrast Checker](#).

Decimal 14853811 Background



This preview shows how black text looks on a background with the Decimal color 14853811.




This preview shows how white text looks on a background with the Decimal color 14853811.

Color Blindness Simulation

Color vision deficiency is a very complex topic, and I could not describe the different causes any better than Wikipedia does, so if you want to learn more, you should check out their [article about color blindness](#).

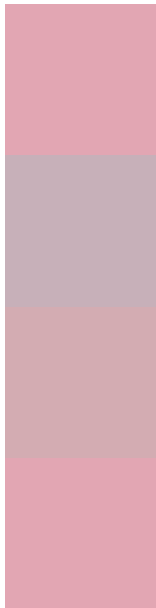
Dichromacy





Tritanopia
14853811

Trichromacy



Original Color
14853811

Protanomaly
13086905

Deuteranomaly
13872306

Tritanomaly
14853811

Monochromacy



Original Color
14853811

Achromatopsia
12171705

Achromatomaly
13152951

CSS Examples

Text

The CSS property to change the color of the text to Decimal 14853811 is called "color". The color property can be set on classes, ids or directly on the HTML element.

This example shows how text in the color #E2A6B3 looks like.

```
.text, #text, p{  
    color:#E2A6B3  
}
```

If you want to add a text shadow in that color use the text-shadow property, you can generate a text shadow directly with our [CSS Text Shadow Generator](#).

Here you see how black text with a 4 pixel #E2A6B3 colored shadow looks like.

```
.shadow{ text-shadow: 4px 4px 2px #E2A6B3
}
```

Border

The CSS property to change the border of an element to Decimal 14853811 is called "border". The border property can be set on classes, ids or directly on the HTML element.

This example shows the color as border, it can be applied via the CSS property "border" or "border-color".

```
.border, #border, table{ border:4px solid
#E2A6B3 }
```

If only the border color should be changed use the property `border-color`.

```
.border{ border-color:#E2A6B3 }
```

If you want to add a box shadow in that color use:

Here you see how a box with a 4 pixel #E2A6B3 colored shadow looks like.

```
.boxshadow{ -moz-box-shadow:4px 4px 4px  
4px #E2A6B3; -webkit-box-shadow:4px 4px  
4px 4px #E2A6B3; box-shadow:4px 4px 4px  
4px #E2A6B3 }
```

Background

The CSS property to change the background color of an element to Decimal 14853811 is called "background". The background property can be set on classes, ids or directly on the HTML element.

```
.background, #background, body{  
background:#E2A6B3 }
```

If only the background color should be changed can be used:

```
.background{ background-color:#E2A6B3 }
```

This example shows the color as background, it is applied via the CSS property "background".

To optimize and compress your CSS code, you can use our [online CSS compressor and optimizer](#) based on csstidy. If you want to create a linear or radial gradient as background or border, check our [CSS Gradient Generator](#).

Hey! You found this booklet interesting? Support Converting Colors with the new Membership Option!

The pro membership hides all ads, plus gives you double the colors in the color bucket, and more awesome pro features!

[Learn more, Memberships starting at \\$2.50/m!](#)

**Follow me
on Twitter!**

@ConvertingColor