

Converting Colors

Decimal(14856633)

Have a look what the booklet for
Decimal(14856633) contains.

Decimal(14856633)	3
<i>Conversions</i>	4
<i>Details</i>	6
<i>Harmonies</i>	11
<i>Previews</i>	23
<i>Color Blindness Simulation</i>	26
<i>CSS Examples</i>	29

Color

Decimal(14856633)

Conversions

Conversions Part 1

Format	Color
Hex	E2B1B9
RGB	226, 177, 185
RGB Percent	89%, 69%, 73%
CMY	0.1137, 0.3059, 0.2745
CMYK	0.00, 0.22, 0.18, 0.11
HSL	350°, 46%, 79%
HSV	350°, 22%, 89%
XYZ	55.8431, 51.1158, 52.8220
YIQ	192.5630, 26.6360, 12.8760

Conversions

Conversions Part 2

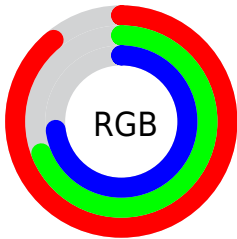
Format	Color
R _Y B	226, 177, 185
Decimal	14856633
CIE Lab	76.75, 18.99, 2.76
CIE LCh	77, 19.194, 8.274
Yxy	51.1158, 0.3495, 0.3199
Android (android.graphics.Color)	4293046713 (0xFFE2B1B9)
YUV	192.5630, -3.7286, 29.3242
Hunter-Lab	71.4953, 14.3049, 6.2422

Details

The Decimal color **14856633** is a light color, and the websafe version is hex **CC9999**. A complement of this color would be **11657946**, and the grayscale version is **12698049**.

A 20% lighter version of the original color is **16771569**, and **11172996** is the 20% darker color. If you saturate the color by 10%, you get **14850726**, and if you desaturate by 10%, it is **14862540**.

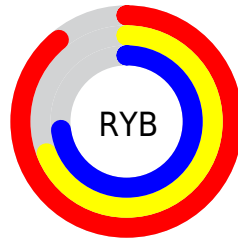
Distribution



Red (89%)

Green (69%)

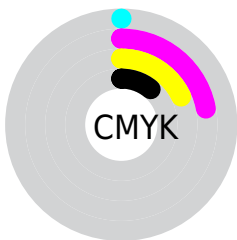
Blue (73%)



Red (89%)

Yellow (69%)

Blue (73%)

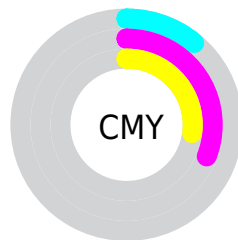


Cyan (0%)

Magenta (22%)

Yellow (18%)

Black (11%)



Cyan (11%)

Magenta (31%)

Yellow (27%)

Brightness & Saturation Gradients

These gradients show how the Decimal color 14856633 changes by changing the brightness by 10 percent. The first figure shows a shift by +10% for each color and the second figure -10%.

Similar to the brightness gradients but the following saturation gradients show a change of the Decimal color 14856633 by changing the saturation by 10% instead.

 14856633

 14856633

16777215

 13014686

 16771569

 11172996

 9397099

 7686995

 5977148

 4398630

 2885649

 851968

 0

 14856633

 14856633

 14850726

 14862540

 14845075

 14868191

 14839168

 14874098

 14833517

 14876671

 14827610

 14821704

 14816053

 14811173

Harmonies

Analogous

The Analogous color harmony consists of three colors that are next to each other on the color wheel.



14267339



14856633



14791592

Triad

The Triadic color harmony groups three colors that are evenly spaced from another and form a triangle on the color wheel.



14856633



11715489



10142686

Complementary

The Complementary color scheme is a pair of colors which are on the opposite of each other on the color wheel.



14856633



11657946

Split Complementary

Split-complementary colors differ from the complementary color scheme. The scheme consists of three colors, the original color and two neighbors of the complement color.



9422803



14856633



10471344

Square

The Square scheme is like the rectangle color scheme, but the four colors are evenly spaced on the color wheel.



14856633



13024922



9554114



11582944

Rectangle

The Rectangle color scheme consists of four colors that form a rectangle on the color wheel.



14856633



14399136



9554114



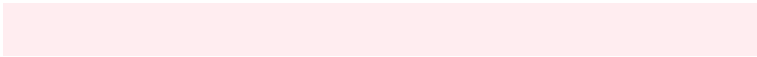
9815259

Sweetspot

The Sweet Spot groups the original color and five complimentary colors.



14856633



16772592



14332386



8418679



0



8421504

Same Dimension

The Same Dimension uses a secret algorithm to generate beautiful new colors.



14856633



16760264



14860721



7365991



11534365



3145736

Inverse Universe

The Inverse Universe completely reimagines the original color for something new.



14856633



16760264



11653858



7365991



11534365



3145736

Previews

White Background



This preview shows how the Decimal color 14856633 looks on a white background.

Color Contrast Check

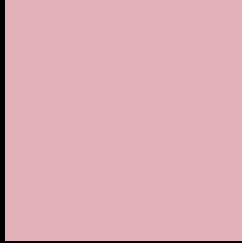
Large Text (above 18pt) WCAG AA × Fail

Any Text WCAG AA × Fail

Large Text (above 18pt) WCAG AAA × Fail

Any Text WCAG AAA × Fail

Black Background



This preview shows how the Decimal color 14856633 looks on a black background.

Color Contrast Check

Large Text (above 18pt) WCAG AA ✓ Pass

Any Text WCAG AA ✓ Pass

Large Text (above 18pt) WCAG AAA ✓ Pass

Any Text WCAG AAA ✓ Pass

If you want to check with other color combinations, try the [Color Contrast Checker](#).

Decimal 14856633 Background



This preview shows how black text looks on a background with the Decimal color 14856633.




This preview shows how white text looks on a background with the Decimal color 14856633.

Color Blindness Simulation

Color vision deficiency is a very complex topic, and I could not describe the different causes any better than Wikipedia does, so if you want to learn more, you should check out their [article about color blindness](#).

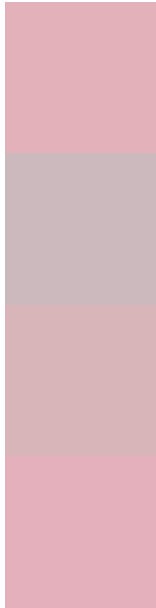
Dichromacy





Tritanopia
14921918

Trichromacy



Original Color
14856633

Protanomaly
13416893

Deuteranomaly
14202296

Tritanomaly
14921916

Monochromacy



Original Color
14856633

Achromatopsia
12698049

Achromatomaly
13482942

CSS Examples

Text

The CSS property to change the color of the text to Decimal 14856633 is called "color". The color property can be set on classes, ids or directly on the HTML element.

This example shows how text in the color #E2B1B9 looks like.

```
.text, #text, p{  
    color:#E2B1B9  
}
```

If you want to add a text shadow in that color use the text-shadow property, you can generate a text shadow directly with our [CSS Text Shadow Generator](#).

Here you see how black text with a 4 pixel #E2B1B9 colored shadow looks like.

```
.shadow{ text-shadow: 4px 4px 2px #E2B1B9
}
```

Border

The CSS property to change the border of an element to Decimal 14856633 is called "border". The border property can be set on classes, ids or directly on the HTML element.

This example shows the color as border, it can be applied via the CSS property "border" or "border-color".

```
.border, #border, table{ border:4px solid
#E2B1B9 }
```

If only the border color should be changed use the property `border-color`.

```
.border{ border-color:#E2B1B9 }
```

If you want to add a box shadow in that color use:

Here you see how a box with a 4 pixel #E2B1B9 colored shadow looks like.

```
.boxshadow{ -moz-box-shadow:4px 4px 4px  
4px #E2B1B9; -webkit-box-shadow:4px 4px  
4px 4px #E2B1B9; box-shadow:4px 4px 4px  
4px #E2B1B9 }
```

Background

The CSS property to change the background color of an element to Decimal 14856633 is called "background". The background property can be set on classes, ids or directly on the HTML element.

```
.background, #background, body{  
background:#E2B1B9 }
```

If only the background color should be changed can be used:

```
.background{ background-color:#E2B1B9 }
```

This example shows the color as background, it is applied via the CSS property "background".

To optimize and compress your CSS code, you can use our [online CSS compressor and optimizer](#) based on csstidy. If you want to create a linear or radial gradient as background or border, check our [CSS Gradient Generator](#).

Hey! You found this booklet interesting? Support Converting Colors with the new Membership Option!

The pro membership hides all ads, plus gives you double the colors in the color bucket, and more awesome pro features!

[Learn more, Memberships starting at \\$2.50/m!](#)

**Follow me
on Twitter!**

@ConvertingColor