

# Converting Colors

Decimal(14857910)

Have a look what the booklet for  
Decimal(14857910) contains.

<b>Decimal(14857910)</b> .....	3
<i><b>Conversions</b></i> .....	4
<i><b>Details</b></i> .....	6
<i><b>Harmonies</b></i> .....	11
<i><b>Previews</b></i> .....	23
<i><b>Color Blindness Simulation</b></i> .....	26
<i><b>CSS Examples</b></i> .....	29

# **Color**

**Decimal(14857910)**

# Conversions

## Conversions Part 1

Format	Color
Hex	E2B6B6
RGB	226, 182, 182
RGB Percent	89%, 71%, 71%
CMY	0.1137, 0.2863, 0.2863
CMYK	0.00, 0.19, 0.19, 0.11
HSL	0°, 43%, 80%
HSV	0°, 19%, 89%
XYZ	56.5355, 53.0020, 51.5066
YIQ	195.1560, 26.2240, 9.3280

# Conversions

## Conversions Part 2

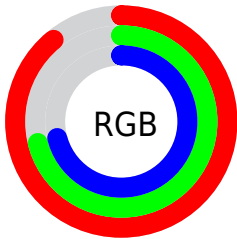
Format	Color
R <sub>Y</sub> B	226, 182, 182
Decimal	14857910
CIE Lab	77.88, 15.86, 6.02
CIE LCh	78, 16.964, 20.788
Yxy	53.0020, 0.3511, 0.3291
Android (android.graphics.Color)	4293047990 (0xFFE2B6B6)
YUV	195.1560, -6.4859, 27.0502
Hunter-Lab	72.8025, 11.2115, 9.0150

# Details

The Decimal color **14857910** is a light color, and the websafe version is hex **FFCCCC**. A complement of this color would be **11985634**, and the grayscale version is **12829635**.

A 20% lighter version of the original color is **16772846**, and **11174273** is the 20% darker color. If you saturate the color by 10%, you get **14851999**, and if you desaturate by 10%, it is **14863821**.

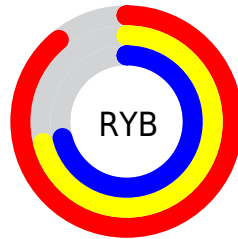
# Distribution



Red (89%)

Green (71%)

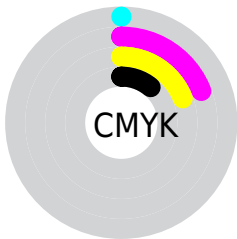
Blue (71%)



Red (89%)

Yellow (71%)

Blue (71%)

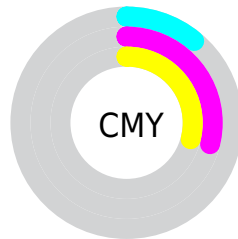


Cyan (0%)

Magenta (19%)

Yellow (19%)

Black (11%)



Cyan (11%)

Magenta (29%)

Yellow (29%)

# Brightness & Saturation Gradients

These gradients show how the Decimal color 14857910 changes by changing the brightness by 10 percent. The first figure shows a shift by +10% for each color and the second figure -10%.

Similar to the brightness gradients but the following saturation gradients show a change of the Decimal color 14857910 by changing the saturation by 10% instead.




 14857910

 14857910

16777215

 13015963

 16772846

 11174273

 9398376

 7688016

 6043705

 4399652

 2887182

 1048576

 0

 14857910

 14857910

 14851999

 14863821

 14846345

 14869475

 14840434

 14875386

 14834780

 14876671

 14828869

 14822958

 14817304

 14811393

 14811136

# Harmonies

## Analogous

The Analogous color harmony consists of three colors that are next to each other on the color wheel.



14530246



14857910



14596521

# Triad

The Triadic color harmony groups three colors that are evenly spaced from another and form a triangle on the color wheel.



14857910



11519916



11125727

# Complementary

The Complementary color scheme is a pair of colors which are on the opposite of each other on the color wheel.



14857910



11985634

# Split Complementary

Split-complementary colors differ from the complementary color scheme. The scheme consists of three colors, the original color and two neighbors of the complement color.



10209240



14857910



10537403

# Square

The Square scheme is like the rectangle color scheme, but the four colors are evenly spaced on the color wheel.



14857910



12698531



10013387



12435166

# Rectangle

The Rectangle color scheme consists of four colors that form a rectangle on the color wheel.



14857910



14072995



10013387



10798558



# Sweetspot

The Sweet Spot groups the original color and five complimentary colors.



14857910



16773360



14857954



8419191



0



8421504



# Same Dimension

The Same Dimension uses a secret algorithm to generate beautiful new colors.



14857910



16762052



14863542



7365989



11534336



3145728



# Inverse Universe

The Inverse Universe completely reimagines the original color for something new.



11985634



12910591



11980002



6647920



45232

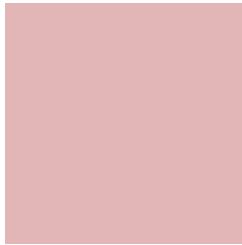


12336



# Previews

## White Background



This preview shows how the Decimal color 14857910 looks on a white background.

## Color Contrast Check

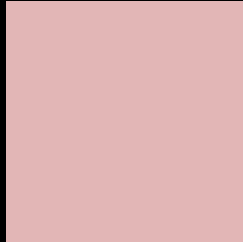
Large Text (above 18pt) WCAG AA × Fail

Any Text WCAG AA × Fail

Large Text (above 18pt) WCAG AAA × Fail

Any Text WCAG AAA × Fail

# Black Background



This preview shows how the Decimal color 14857910 looks on a black background.

## Color Contrast Check

Large Text (above 18pt) WCAG AA ✓ Pass

Any Text WCAG AA ✓ Pass

Large Text (above 18pt) WCAG AAA ✓ Pass

Any Text WCAG AAA ✓ Pass

If you want to check with other color combinations, try the [Color Contrast Checker](#).



## Decimal 14857910 Background



This preview shows how black text looks on a background with the Decimal color 14857910.




This preview shows how white text looks on a background with the Decimal color 14857910.

# Color Blindness Simulation

Color vision deficiency is a very complex topic, and I could not describe the different causes any better than Wikipedia does, so if you want to learn more, you should check out their [article about color blindness](#).

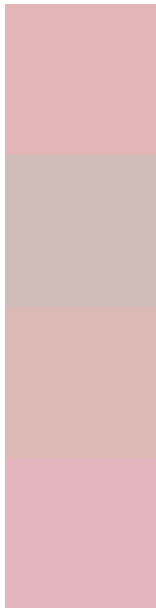
## Dichromacy





**Tritanopia**  
14922946

# Trichromacy



**Original Color**  
14857910

**Protanomaly**  
13679801

**Deuteranomaly**  
14465461

**Tritanomaly**  
14923198

# Monochromacy



**Original Color**  
14857910

**Achromatopsia**  
12829635

**Achromatomaly**  
13549246

# CSS Examples

## Text

The CSS property to change the color of the text to Decimal 14857910 is called "color". The color property can be set on classes, ids or directly on the HTML element.

This example shows how text in the color #E2B6B6 looks like.

```
.text, #text, p{  
    color:#E2B6B6  
}
```

If you want to add a text shadow in that color use the text-shadow property, you can generate a text shadow directly with our [CSS Text Shadow Generator](#).

Here you see how black text with a 4 pixel #E2B6B6 colored shadow looks like.

```
.shadow{ text-shadow: 4px 4px 2px #E2B6B6
}
```

## Border

The CSS property to change the border of an element to Decimal 14857910 is called "border". The border property can be set on classes, ids or directly on the HTML element.

This example shows the color as border, it can be applied via the CSS property "border" or "border-color".

```
.border, #border, table{ border:4px solid
#E2B6B6 }
```

If only the border color should be changed use the property `border-color`.

```
.border{ border-color:#E2B6B6 }
```

If you want to add a box shadow in that color use:

Here you see how a box with a 4 pixel #E2B6B6 colored shadow looks like.

```
.boxshadow{ -moz-box-shadow:4px 4px 4px  
4px #E2B6B6; -webkit-box-shadow:4px 4px  
4px 4px #E2B6B6; box-shadow:4px 4px 4px  
4px #E2B6B6 }
```

# Background

The CSS property to change the background color of an element to Decimal 14857910 is called "background". The background property can be set on classes, ids or directly on the HTML element.

```
.background, #background, body{  
background:#E2B6B6 }
```

If only the background color should be changed can be used:

```
.background{ background-color:#E2B6B6 }
```

This example shows the color as background, it is applied via the CSS property "background".

To optimize and compress your CSS code, you can use our [online CSS compressor and optimizer](#) based on csstidy. If you want to create a linear or radial gradient as background or border, check our [CSS Gradient Generator](#).



Hey! You found this booklet interesting? Support Converting Colors with the new Membership Option!

The pro membership hides all ads, plus gives you double the colors in the color bucket, and more awesome pro features!

**[Learn more, Memberships starting at \\$2.50/m!](#)**

**Follow me  
on Twitter!**

@ConvertingColor