

Converting Colors

Decimal(14858165)

Have a look what the booklet for
Decimal(14858165) contains.

Decimal(14858165)	3
<i>Conversions</i>	4
<i>Details</i>	6
<i>Harmonies</i>	11
<i>Previews</i>	23
<i>Color Blindness Simulation</i>	26
<i>CSS Examples</i>	29

Color

Decimal(14858165)

Conversions

Conversions Part 1

Format	Color
Hex	E2B7B5
RGB	226, 183, 181
RGB Percent	89%, 72%, 71%
CMY	0.1137, 0.2824, 0.2902
CMYK	0.00, 0.19, 0.20, 0.11
HSL	3°, 44%, 80%
HSV	3°, 20%, 89%
XYZ	56.6380, 53.3719, 51.0327
YIQ	195.6290, 26.2700, 8.4940

Conversions

Conversions Part 2

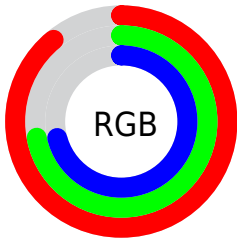
Format	Color
R _Y B	226, 183, 181
Decimal	14858165
CIE Lab	78.09, 15.17, 6.88
CIE LCh	78, 16.660, 24.376
Yxy	53.3719, 0.3517, 0.3314
Android (android.graphics.Color)	4293048245 (0xFFE2B7B5)
YUV	195.6290, -7.2121, 26.6354
Hunter-Lab	73.0561, 10.5371, 9.7227

Details

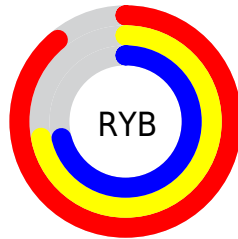
The Decimal color **14858165** is a light color, and the websafe version is hex **FFCCCC**. A complement of this color would be **11919586**, and the grayscale version is **12895428**.

A 20% lighter version of the original color is **16773101**, and **11174528** is the 20% darker color. If you saturate the color by 10%, you get **14852510**, and if you desaturate by 10%, it is **14863820**.

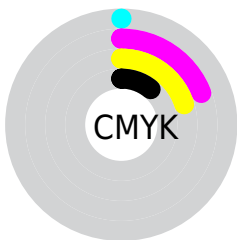
Distribution



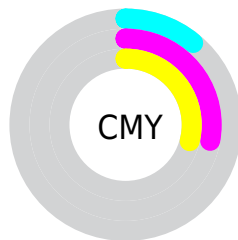
- Red (89%)
- Green (72%)
- Blue (71%)



- Red (89%)
- Yellow (72%)
- Blue (71%)



- Cyan (0%)
- Magenta (19%)
- Yellow (20%)
- Black (11%)



- Cyan (11%)
- Magenta (28%)
- Yellow (29%)

Brightness & Saturation Gradients

These gradients show how the Decimal color 14858165 changes by changing the brightness by 10 percent. The first figure shows a shift by +10% for each color and the second figure -10%.

Similar to the brightness gradients but the following saturation gradients show a change of the Decimal color 14858165 by changing the saturation by 10% instead.


 14858165

 14858165

16777215

 13016218

 16773101

 11174528


 9398631

 7688271

 6043960

 4399907

 2887437

 1114112

 0

 14858165

 14858165

 14852510

 14863820

 14847112

 14869218

 14841457

 14874873

 14836059

 14876671

 14830404

 14824749

 14819351

 14813696

Harmonies

Analogous

The Analogous color harmony consists of three colors that are next to each other on the color wheel.



14661573



14858165



14531241

Triad

The Triadic color harmony groups three colors that are evenly spaced from another and form a triangle on the color wheel.



14858165



11454639



11387871

Complementary

The Complementary color scheme is a pair of colors which are on the opposite of each other on the color wheel.



14858165



11919586

Split Complementary

Split-complementary colors differ from the complementary color scheme. The scheme consists of three colors, the original color and two neighbors of the complement color.



10406106



14858165



10472126

Square

The Square scheme is like the rectangle color scheme, but the four colors are evenly spaced on the color wheel.



14858165



12633253



10078925



12631773

Rectangle

The Rectangle color scheme consists of four colors that form a rectangle on the color wheel.



14858165



14007716



10078925



10995166

Sweetspot

The Sweet Spot groups the original color and five complimentary colors.



14858165



16773360



14857697



8419191



0



8421504

Same Dimension

The Same Dimension uses a secret algorithm to generate beautiful new colors.



14858165



16762306



14863797



7365989



11536384



3146240

Inverse Universe

The Inverse Universe completely reimagines the original color for something new.



11919586



12778751



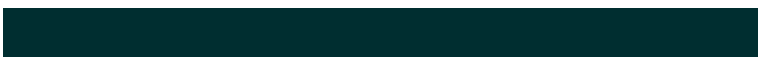
11913954



6647920



43184



11824

Previews

White Background



This preview shows how the Decimal color 14858165 looks on a white background.

Color Contrast Check

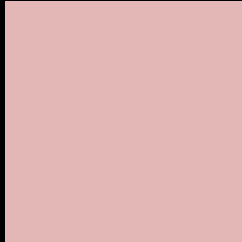
Large Text (above 18pt) WCAG AA × Fail

Any Text WCAG AA × Fail

Large Text (above 18pt) WCAG AAA × Fail

Any Text WCAG AAA × Fail

Black Background



This preview shows how the Decimal color 14858165 looks on a black background.

Color Contrast Check

Large Text (above 18pt) WCAG AA ✓ Pass

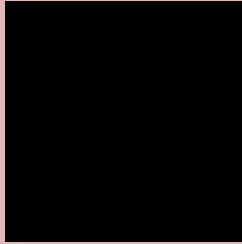
Any Text WCAG AA ✓ Pass

Large Text (above 18pt) WCAG AAA ✓ Pass

Any Text WCAG AAA ✓ Pass

If you want to check with other color combinations, try the [Color Contrast Checker](#).

Decimal 14858165 Background



This preview shows how black text looks on a background with the Decimal color 14858165.



This preview shows how white text looks on a background with the Decimal color 14858165.

Color Blindness Simulation

Color vision deficiency is a very complex topic, and I could not describe the different causes any better than Wikipedia does, so if you want to learn more, you should check out their [article about color blindness](#).

Dichromacy





Tritanopia
14988739

Trichromacy



Original Color
14858165

Protanomaly
13680056

Deuteranomaly
14465716

Tritanomaly
14923454

Monochromacy



Original Color
14858165

Achromatopsia
12895428

Achromatomaly
13615039

CSS Examples

Text

The CSS property to change the color of the text to Decimal 14858165 is called "color". The color property can be set on classes, ids or directly on the HTML element.

This example shows how text in the color #E2B7B5 looks like.

```
.text, #text, p{  
  color:#E2B7B5  
}
```

If you want to add a text shadow in that color use the text-shadow property, you can generate a text shadow directly with our [CSS Text Shadow Generator](#).

Here you see how black text with a 4 pixel #E2B7B5 colored shadow looks like.

```
.shadow{ text-shadow: 4px 4px 2px #E2B7B5
}
```

Border

The CSS property to change the border of an element to Decimal 14858165 is called "border". The border property can be set on classes, ids or directly on the HTML element.

This example shows the color as border, it can be applied via the CSS property "border" or "border-color".

```
.border, #border, table{ border:4px solid
#E2B7B5 }
```

If only the border color should be changed use the property `border-color`.

```
.border{ border-color:#E2B7B5 }
```

If you want to add a box shadow in that color use:

Here you see how a box with a 4 pixel #E2B7B5 colored shadow looks like.

```
.boxshadow{ -moz-box-shadow:4px 4px 4px  
4px #E2B7B5; -webkit-box-shadow:4px 4px  
4px 4px #E2B7B5; box-shadow:4px 4px 4px  
4px #E2B7B5 }
```

Background

The CSS property to change the background color of an element to Decimal 14858165 is called "background". The background property can be set on classes, ids or directly on the HTML element.

```
.background, #background, body{  
background:#E2B7B5 }
```

If only the background color should be changed can be used:

```
.background{ background-color:#E2B7B5 }
```

This example shows the color as background, it is applied via the CSS property "background".

To optimize and compress your CSS code, you can use our [online CSS compressor and optimizer](#) based on csstidy. If you want to create a linear or radial gradient as background or border, check our [CSS Gradient Generator](#).

Hey! You found this booklet interesting? Support Converting Colors with the new Membership Option!

The pro membership hides all ads, plus gives you double the colors in the color bucket, and more awesome pro features!

[Learn more, Memberships starting at \\$2.50/m!](#)

**Follow me
on Twitter!**

@ConvertingColor