

Converting Colors

Decimal(14859683)

Have a look what the booklet for
Decimal(14859683) contains.

Decimal(14859683)	3
<i>Conversions</i>	4
<i>Details</i>	6
<i>Harmonies</i>	11
<i>Previews</i>	23
<i>Color Blindness Simulation</i>	26
<i>CSS Examples</i>	29

Color

Decimal(14859683)

Conversions

Conversions Part 1

Format	Color
Hex	E2BDA3
RGB	226, 189, 163
RGB Percent	89%, 74%, 64%
CMY	0.1137, 0.2588, 0.3608
CMYK	0.00, 0.16, 0.28, 0.11
HSL	25°, 52%, 76%
HSV	25°, 28%, 89%
XYZ	56.1725, 55.2083, 42.3460
YIQ	197.0990, 30.3980, -0.2420

Conversions

Conversions Part 2

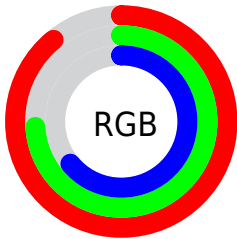
Format	Color
RYB	226, 207, 163
Decimal	14859683
CIELab	79.16, 9.42, 18.08
CIELCh	79, 20.390, 62.487
Yxy	55.2083, 0.3654, 0.3591
Android (android.graphics.Color)	4293049763 (0xFFE2BDA3)
YUV	197.0990, -16.8108, 25.3462
Hunter-Lab	74.3023, 4.9169, 18.2213

Details

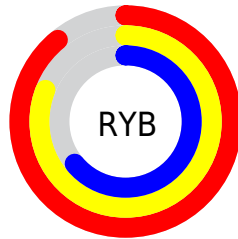
The Decimal color **14859683** is a light color, and the websafe version is hex **FFCC99**. A complement of this color would be **10733794**, and the grayscale version is **12961221**.

A 20% lighter version of the original color is **16774618**, and **11176047** is the 20% darker color. If you saturate the color by 10%, you get **14856332**, and if you desaturate by 10%, it is **14863034**.

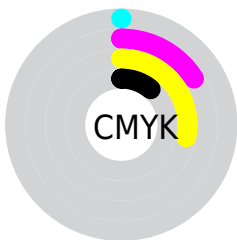
Distribution



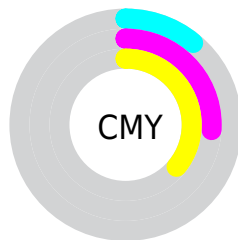
- Red (89%)
- Green (74%)
- Blue (64%)



- Red (89%)
- Yellow (81%)
- Blue (64%)



- Cyan (0%)
- Magenta (16%)
- Yellow (28%)
- Black (11%)



- Cyan (11%)
- Magenta (26%)
- Yellow (36%)

Brightness & Saturation Gradients

These gradients show how the Decimal color 14859683 changes by changing the brightness by 10 percent. The first figure shows a shift by +10% for each color and the second figure -10%.

Similar to the brightness gradients but the following saturation gradients show a change of the Decimal color 14859683 by changing the saturation by 10% instead.


 14859683

 14859683

16777215

 13017737

 16774618

 11176047

 16777206

 9399895

 7624255

 5979945

 4335892

 2823168

 983040

 0

 14859683

 14859683

 14856332

 14863034

 14852726

 14866640

 14849375

 14869991

 14846025

 14873341

 14842674

 14876671

 14839067

 14835717

 14834944

Harmonies

Analogous

The Analogous color harmony consists of three colors that are next to each other on the color wheel.



15448240



14859683



13747102

Triad

The Triadic color harmony groups three colors that are evenly spaced from another and form a triangle on the color wheel.



14859683



9883589



13287396

Complementary

The Complementary color scheme is a pair of colors which are on the opposite of each other on the color wheel.



14859683



10733794

Split Complementary

Split-complementary colors differ from the complementary color scheme. The scheme consists of three colors, the original color and two neighbors of the complement color.



11650538



14859683



9555672

Square

The Square scheme is like the rectangle color scheme, but the four colors are evenly spaced on the color wheel.



14859683



10997170



10210277



14596566

Rectangle

The Rectangle color scheme consists of four colors that form a rectangle on the color wheel.



14859683



12830625



10210277



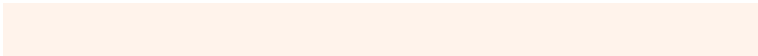
12698087

Sweetspot

The Sweet Spot groups the original color and five complimentary colors.



14859683



16774123



14853065



8419443



0



8421504

Same Dimension

The Same Dimension uses a secret algorithm to generate beautiful new colors.



14859683



16764587



14867619



7367269



11553024



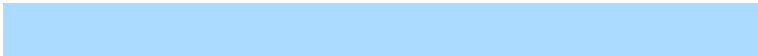
3150848

Inverse Universe

The Inverse Universe completely reimagines the original color for something new.



10733794



11263231



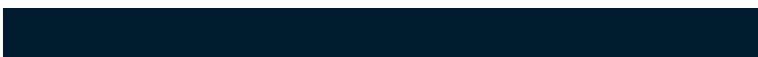
10725858



6646896



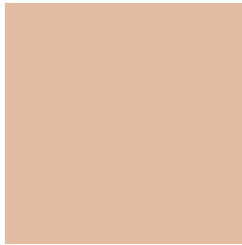
26544



7216

Previews

White Background



This preview shows how the Decimal color 14859683 looks on a white background.

Color Contrast Check

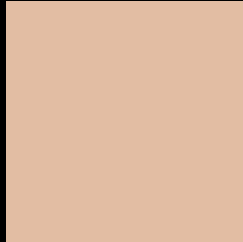
Large Text (above 18pt) WCAG AA × Fail

Any Text WCAG AA × Fail

Large Text (above 18pt) WCAG AAA × Fail

Any Text WCAG AAA × Fail

Black Background



This preview shows how the Decimal color 14859683 looks on a black background.

Color Contrast Check

Large Text (above 18pt) WCAG AA ✓ Pass

Any Text WCAG AA ✓ Pass

Large Text (above 18pt) WCAG AAA ✓ Pass

Any Text WCAG AAA ✓ Pass

If you want to check with other color combinations, try the [Color Contrast Checker](#).

Decimal 14859683 Background



This preview shows how black text looks on a background with the Decimal color 14859683.

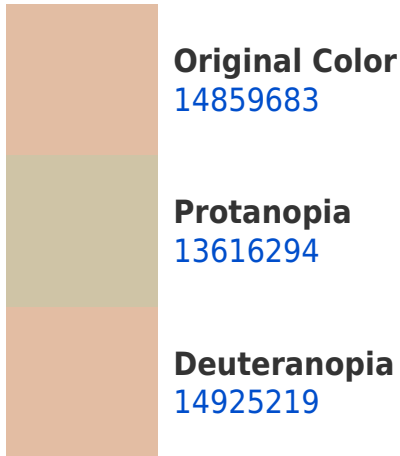



This preview shows how white text looks on a background with the Decimal color 14859683.

Color Blindness Simulation

Color vision deficiency is a very complex topic, and I could not describe the different causes any better than Wikipedia does, so if you want to learn more, you should check out their [article about color blindness](#).

Dichromacy





Tritanopia
15120582

Trichromacy



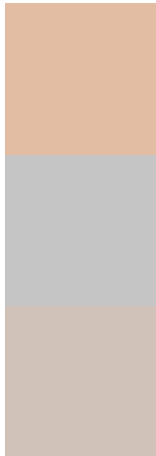
Original Color
14859683

Protanomaly
14074277

Deuteranomaly
14925219

Tritanomaly
15055545

Monochromacy



Original Color
14859683

Achromatopsia
12961221

Achromatomaly
13681337

CSS Examples

Text

The CSS property to change the color of the text to Decimal 14859683 is called "color". The color property can be set on classes, ids or directly on the HTML element.

This example shows how text in the color #E2BDA3 looks like.

```
.text, #text, p{  
    color:#E2BDA3  
}
```

If you want to add a text shadow in that color use the text-shadow property, you can generate a text shadow directly with our [CSS Text Shadow Generator](#).

Here you see how black text with a 4 pixel #E2BDA3 colored shadow looks like.

```
.shadow{ text-shadow: 4px 4px 2px #E2BDA3
}
```

Border

The CSS property to change the border of an element to Decimal 14859683 is called "border". The border property can be set on classes, ids or directly on the HTML element.

This example shows the color as border, it can be applied via the CSS property "border" or "border-color".

```
.border, #border, table{ border:4px solid
#E2BDA3 }
```

If only the border color should be changed use the property `border-color`.

```
.border{ border-color:#E2BDA3 }
```

If you want to add a box shadow in that color use:

Here you see how a box with a 4 pixel #E2BDA3 colored shadow looks like.

```
.boxshadow{ -moz-box-shadow:4px 4px 4px  
4px #E2BDA3; -webkit-box-shadow:4px 4px  
4px 4px #E2BDA3; box-shadow:4px 4px 4px  
4px #E2BDA3 }
```

Background

The CSS property to change the background color of an element to Decimal 14859683 is called "background". The background property can be set on classes, ids or directly on the HTML element.

```
.background, #background, body{  
background:#E2BDA3 }
```

If only the background color should be changed can be used:

```
.background{ background-color:#E2BDA3 }
```

This example shows the color as background, it is applied via the CSS property "background".

To optimize and compress your CSS code, you can use our [online CSS compressor and optimizer](#) based on csstidy. If you want to create a linear or radial gradient as background or border, check our [CSS Gradient Generator](#).

Hey! You found this booklet interesting? Support Converting Colors with the new Membership Option!

The pro membership hides all ads, plus gives you double the colors in the color bucket, and more awesome pro features!

[Learn more, Memberships starting at \\$2.50/m!](#)

**Follow me
on Twitter!**

@ConvertingColor