

# Converting Colors

Decimal(14859693)

Have a look what the booklet for  
Decimal(14859693) contains.

<b>Decimal(14859693)</b> .....	3
<i><b>Conversions</b></i> .....	4
<i><b>Details</b></i> .....	6
<i><b>Harmonies</b></i> .....	11
<i><b>Previews</b></i> .....	23
<i><b>Color Blindness Simulation</b></i> .....	26
<i><b>CSS Examples</b></i> .....	29

# **Color**

**Decimal(14859693)**

# Conversions

## Conversions Part 1

Format	Color
Hex	E2BDAD
RGB	226, 189, 173
RGB Percent	89%, 74%, 68%
CMY	0.1137, 0.2588, 0.3216
CMYK	0.00, 0.16, 0.23, 0.11
HSL	18°, 48%, 78%
HSV	18°, 23%, 89%
XYZ	57.1045, 55.5811, 47.2537
YIQ	198.2390, 27.1880, 2.8680

# Conversions

## Conversions Part 2

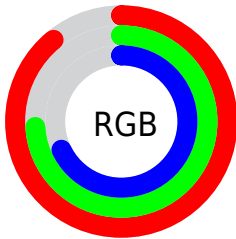
Format	Color
R <sub>Y</sub> B	226, 196, 173
Decimal	14859693
CIE Lab	79.37, 10.81, 13.02
CIE LCh	79, 16.918, 50.304
Yxy	55.5811, 0.3570, 0.3475
Android (android.graphics.Color)	4293049773 (0xFFE2BDAD)
YUV	198.2390, -12.4428, 24.3464
Hunter-Lab	74.5527, 6.2567, 14.6072

# Details

The Decimal color **14859693** is a light color, and the websafe version is hex **FFCCCC**. A complement of this color would be **11391714**, and the grayscale version is **13027014**.

A 20% lighter version of the original color is **16774628**, and **11176057** is the 20% darker color. If you saturate the color by 10%, you get **14855574**, and if you desaturate by 10%, it is **14863812**.

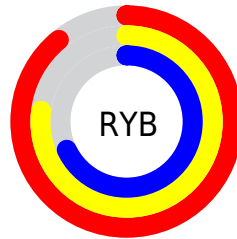
# Distribution



Red (89%)

Green (74%)

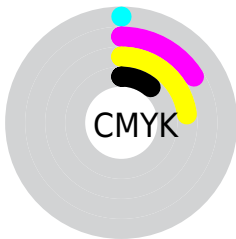
Blue (68%)



Red (89%)

Yellow (77%)

Blue (68%)

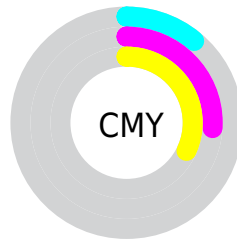


Cyan (0%)

Magenta (16%)

Yellow (23%)

Black (11%)



Cyan (11%)

Magenta (26%)

Yellow (32%)

# Brightness & Saturation Gradients

These gradients show how the Decimal color 14859693 changes by changing the brightness by 10 percent. The first figure shows a shift by +10% for each color and the second figure -10%.

Similar to the brightness gradients but the following saturation gradients show a change of the Decimal color 14859693 by changing the saturation by 10% instead.




 14859693

 14859693

16777215

 13017746

 16774628

 11176057

 9399904

 7689800

 5979954

 4401436

 2888707

 1245184

 0

 14859693

 14859693

 14855574

 14863812

 14851456

 14867930

 14847593

 14871793

 14843475

 14875903

 14839356

 14876671

 14835237

 14831375

 14828544

# Harmonies

## Analogous

The Analogous color harmony consists of three colors that are next to each other on the color wheel.



15121082



14859693



14074534

# Triad

The Triadic color harmony groups three colors that are evenly spaced from another and form a triangle on the color wheel.



14859693



10800831



12698338

# Complementary

The Complementary color scheme is a pair of colors which are on the opposite of each other on the color wheel.



14859693



11391714

# Split Complementary

Split-complementary colors differ from the complementary color scheme. The scheme consists of three colors, the original color and two neighbors of the complement color.



11389155



14859693



10276559

# Square

The Square scheme is like the rectangle color scheme, but the four colors are evenly spaced on the color wheel.



14859693



11848624



10472668



13942233

# Rectangle

The Rectangle color scheme consists of four colors that form a rectangle on the color wheel.



14859693



13419942



10472668



12240099

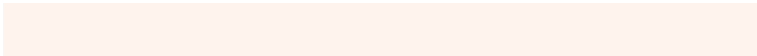


# Sweetspot

The Sweet Spot groups the original color and five complimentary colors.



14859693



16774125



14855634



8419445



0



8421504



# Same Dimension

The Same Dimension uses a secret algorithm to generate beautiful new colors.



14859693



16764344



14866349



7366757



11547904



3149568

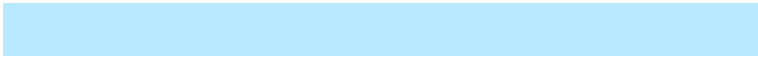


# Inverse Universe

The Inverse Universe completely reimagines the original color for something new.



11391714



12118527



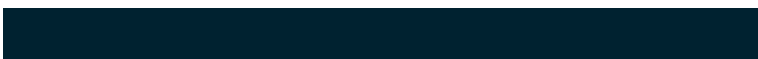
11385058



6647152



31664



8752



# Previews

## White Background



This preview shows how the Decimal color 14859693 looks on a white background.

## Color Contrast Check

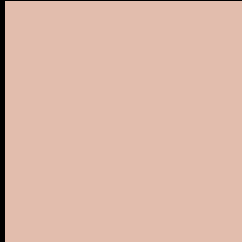
Large Text (above 18pt) WCAG AA × Fail

Any Text WCAG AA × Fail

Large Text (above 18pt) WCAG AAA × Fail

Any Text WCAG AAA × Fail

# Black Background



This preview shows how the Decimal color 14859693 looks on a black background.

## Color Contrast Check

Large Text (above 18pt) WCAG AA ✓ Pass

Any Text WCAG AA ✓ Pass

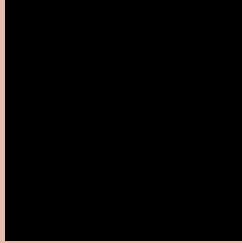
Large Text (above 18pt) WCAG AAA ✓ Pass

Any Text WCAG AAA ✓ Pass

If you want to check with other color combinations, try the [Color Contrast Checker](#).



## Decimal 14859693 Background



This preview shows how black text looks on a background with the Decimal color 14859693.



This preview shows how white text looks on a background with the Decimal color 14859693.

# Color Blindness Simulation

Color vision deficiency is a very complex topic, and I could not describe the different causes any better than Wikipedia does, so if you want to learn more, you should check out their [article about color blindness](#).

## Dichromacy





**Tritanopia**  
15055303

# Trichromacy



**Original Color**  
14859693

**Protanomaly**  
14008752

**Deuteranomaly**  
14794413

**Tritanomaly**  
14990014

# Monochromacy



**Original Color**  
14859693

**Achromatopsia**  
13027014

**Achromatomaly**  
13681597

# CSS Examples

## Text

The CSS property to change the color of the text to Decimal 14859693 is called "color". The color property can be set on classes, ids or directly on the HTML element.

This example shows how text in the color #E2BDAD looks like.

```
.text, #text, p{  
    color:#E2BDAD  
}
```

If you want to add a text shadow in that color use the text-shadow property, you can generate a text shadow directly with our [CSS Text Shadow Generator](#).

Here you see how black text with a 4 pixel #E2BDAD colored shadow looks like.

```
.shadow{ text-shadow: 4px 4px 2px #E2BDAD
}
```

## Border

The CSS property to change the border of an element to Decimal 14859693 is called "border". The border property can be set on classes, ids or directly on the HTML element.

This example shows the color as border, it can be applied via the CSS property "border" or "border-color".

```
.border, #border, table{ border:4px solid
#E2BDAD }
```

If only the border color should be changed use the property `border-color`.

```
.border{ border-color:#E2BDAD }
```

If you want to add a box shadow in that color use:

Here you see how a box with a 4 pixel #E2BDAD colored shadow looks like.

```
.boxshadow{ -moz-box-shadow:4px 4px 4px  
4px #E2BDAD; -webkit-box-shadow:4px 4px  
4px 4px #E2BDAD; box-shadow:4px 4px 4px  
4px #E2BDAD }
```

# Background

The CSS property to change the background color of an element to Decimal 14859693 is called "background". The background property can be set on classes, ids or directly on the HTML element.

```
.background, #background, body{  
background:#E2BDAD }
```

If only the background color should be changed can be used:

```
.background{ background-color:#E2BDAD }
```

This example shows the color as background, it is applied via the CSS property "background".

To optimize and compress your CSS code, you can use our [online CSS compressor and optimizer](#) based on csstidy. If you want to create a linear or radial gradient as background or border, check our [CSS Gradient Generator](#).



Hey! You found this booklet interesting? Support Converting Colors with the new Membership Option!

The pro membership hides all ads, plus gives you double the colors in the color bucket, and more awesome pro features!

**[Learn more, Memberships starting at \\$2.50/m!](#)**

**Follow me  
on Twitter!**

@ConvertingColor