

Converting Colors

Decimal(14859935)

Have a look what the booklet for
Decimal(14859935) contains.

Decimal(14859935)	3
<i>Conversions</i>	4
<i>Details</i>	6
<i>Harmonies</i>	11
<i>Previews</i>	23
<i>Color Blindness Simulation</i>	26
<i>CSS Examples</i>	29

Color

Decimal(14859935)

Conversions

Conversions Part 1

Format	Color
Hex	E2BE9F
RGB	226, 190, 159
RGB Percent	89%, 75%, 62%
CMY	0.1137, 0.2549, 0.3765
CMYK	0.00, 0.16, 0.30, 0.11
HSL	28°, 54%, 75%
HSV	28°, 30%, 89%
XYZ	56.0355, 55.4989, 40.5599
YIQ	197.2300, 31.4070, -2.0090

Conversions

Conversions Part 2

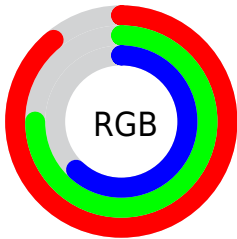
Format	Color
R_{YB}	226, 217, 159
Decimal	14859935
CIE _{Lab}	79.33, 8.36, 20.45
CIE _{LCh}	79, 22.096, 67.770
Yxy	55.4989, 0.3684, 0.3649
Android (android.graphics.Color)	4293050015 (0xFFE2BE9F)
YUV	197.2300, -18.8474, 25.2313
Hunter-Lab	74.4976, 3.8932, 19.8681

Details

The Decimal color **14859935** is a light color, and the websafe version is hex **FFCC99**, and the color name is **eggshell paper-colored (torinoko-iro)**. A complement of this color would be **10470370**, and the grayscale version is **12961221**.

A 20% lighter version of the original color is **16774870**, and **11176299** is the 20% darker color. If you saturate the color by 10%, you get **14856840**, and if you desaturate by 10%, it is **14863030**.

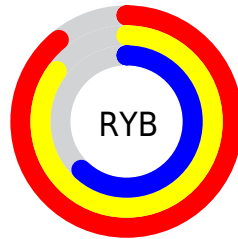
Distribution



Red (89%)

Green (75%)

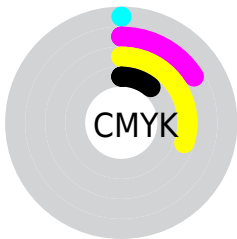
Blue (62%)



Red (89%)

Yellow (85%)

Blue (62%)

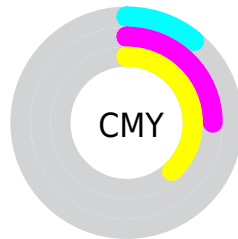


Cyan (0%)

Magenta (16%)

Yellow (30%)

Black (11%)



Cyan (11%)

Magenta (25%)

Yellow (38%)

Brightness & Saturation Gradients

These gradients show how the Decimal color 14859935 changes by changing the brightness by 10 percent. The first figure shows a shift by +10% for each color and the second figure -10%.

Similar to the brightness gradients but the following saturation gradients show a change of the Decimal color 14859935 by changing the saturation by 10% instead.

14859935

14859935

16777215

13017989

16774870

11176299

16777202

9400147

7624508

5980198

4336145

2823424

917504

0

 14859935

 14859935

 14856840

 14863030

 14853746

 14866124

 14850651

 14869219

 14847301

 14872569

 14844206

 14875647

 14841111

 14876671

 14838017

 14838016

Harmonies

Analogous

The Analogous color harmony consists of three colors that are next to each other on the color wheel.



15579308



14859935



13616540

Triad

The Triadic color harmony groups three colors that are evenly spaced from another and form a triangle on the color wheel.



14859935



9490633



13614565

Complementary

The Complementary color scheme is a pair of colors which are on the opposite of each other on the color wheel.



14859935



10470370

Split Complementary

Split-complementary colors differ from the complementary color scheme. The scheme consists of three colors, the original color and two neighbors of the complement color.



11847149



14859935



9293789

Square

The Square scheme is like the rectangle color scheme, but the four colors are evenly spaced on the color wheel.



14859935



10604468



10210282



14989525

Rectangle

The Rectangle color scheme consists of four colors that form a rectangle on the color wheel.



14859935



12634528



10210282



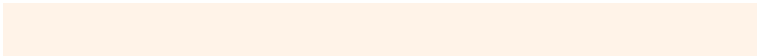
13025513

Sweetspot

The Sweet Spot groups the original color and five complimentary colors.



14859935



16774120



14852036



8419441



0



8421504

Same Dimension

The Same Dimension uses a secret algorithm to generate beautiful new colors.



14859935



16764579



14868383



7367269



11555072



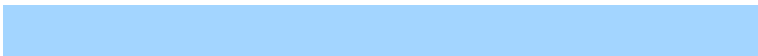
3151360

Inverse Universe

The Inverse Universe completely reimagines the original color for something new.



10470370



10737151



10461922



6646640



24496



6704

Previews

White Background



This preview shows how the Decimal color 14859935 looks on a white background.

Color Contrast Check

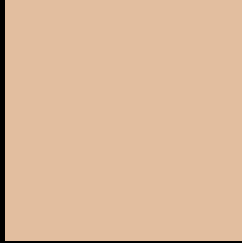
Large Text (above 18pt) WCAG AA × Fail

Any Text WCAG AA × Fail

Large Text (above 18pt) WCAG AAA × Fail

Any Text WCAG AAA × Fail

Black Background



This preview shows how the Decimal color 14859935 looks on a black background.

Color Contrast Check

Large Text (above 18pt) WCAG AA ✓ Pass

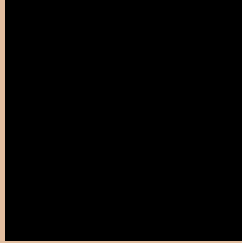
Any Text WCAG AA ✓ Pass

Large Text (above 18pt) WCAG AAA ✓ Pass

Any Text WCAG AAA ✓ Pass

If you want to check with other color combinations, try the [Color Contrast Checker](#).

Decimal 14859935 Background



This preview shows how black text looks on a background with the Decimal color 14859935.




This preview shows how white text looks on a background with the Decimal color 14859935.

Color Blindness Simulation

Color vision deficiency is a very complex topic, and I could not describe the different causes any better than Wikipedia does, so if you want to learn more, you should check out their [article about color blindness](#).

Dichromacy





Tritanopia
15120583

Trichromacy



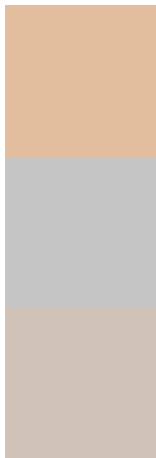
Original Color
14859935

Protanomaly
14140065

Deuteranomaly
14990751

Tritanomaly
15055544

Monochromacy



Original Color
14859935

Achromatopsia
12961221

Achromatomaly
13681335

CSS Examples

Text

The CSS property to change the color of the text to Decimal 14859935 is called "color". The color property can be set on classes, ids or directly on the HTML element.

This example shows how text in the color #E2BE9F looks like.

```
.text, #text, p{  
  color:#E2BE9F  
}
```

If you want to add a text shadow in that color use the text-shadow property, you can generate a text shadow directly with our [CSS Text Shadow Generator](#).

Here you see how black text with a 4 pixel #E2BE9F colored shadow looks like.

```
.shadow{ text-shadow: 4px 4px 2px #E2BE9F
}
```

Border

The CSS property to change the border of an element to Decimal 14859935 is called "border". The border property can be set on classes, ids or directly on the HTML element.

This example shows the color as border, it can be applied via the CSS property "border" or "border-color".

```
.border, #border, table{ border:4px solid
#E2BE9F }
```

If only the border color should be changed use the property `border-color`.

```
.border{ border-color:#E2BE9F }
```

If you want to add a box shadow in that color use:

Here you see how a box with a 4 pixel #E2BE9F colored shadow looks like.

```
.boxshadow{ -moz-box-shadow:4px 4px 4px  
4px #E2BE9F; -webkit-box-shadow:4px 4px  
4px 4px #E2BE9F; box-shadow:4px 4px 4px  
4px #E2BE9F }
```

Background

The CSS property to change the background color of an element to Decimal 14859935 is called "background". The background property can be set on classes, ids or directly on the HTML element.

```
.background, #background, body{  
background:#E2BE9F }
```

If only the background color should be changed can be used:

```
.background{ background-color:#E2BE9F }
```

This example shows the color as background, it is applied via the CSS property "background".

To optimize and compress your CSS code, you can use our [online CSS compressor and optimizer](#) based on csstidy. If you want to create a linear or radial gradient as background or border, check our [CSS Gradient Generator](#).

Hey! You found this booklet interesting? Support Converting Colors with the new Membership Option!

The pro membership hides all ads, plus gives you double the colors in the color bucket, and more awesome pro features!

[Learn more, Memberships starting at \\$2.50/m!](#)

**Follow me
on Twitter!**

@ConvertingColor