

Converting Colors

Decimal(14862021)

Have a look what the booklet for
Decimal(14862021) contains.

Decimal(14862021)	3
<i>Conversions</i>	4
<i>Details</i>	6
<i>Harmonies</i>	11
<i>Previews</i>	23
<i>Color Blindness Simulation</i>	26
<i>CSS Examples</i>	29

Color

Decimal(14862021)

Conversions

Conversions Part 1

Format	Color
Hex	E2C6C5
RGB	226, 198, 197
RGB Percent	89%, 78%, 77%
CMY	0.1137, 0.2235, 0.2275
CMYK	0.00, 0.12, 0.13, 0.11
HSL	2°, 33%, 83%
HSV	2°, 13%, 89%
XYZ	61.6362, 60.5881, 61.2694
YIQ	206.2580, 17.0090, 5.6250

Conversions

Conversions Part 2

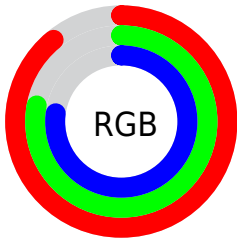
Format	Color
R _Y B	226, 198, 197
Decimal	14862021
CIE Lab	82.16, 9.69, 4.12
CIE LCh	82, 10.531, 23.025
Yxy	60.5881, 0.3359, 0.3302
Android (android.graphics.Color)	4293052101 (0xFFE2C6C5)
YUV	206.2580, -4.5642, 17.3137
Hunter-Lab	77.8384, 5.1277, 7.8175

Details

The Decimal color **14862021** is a light color, and the websafe version is hex **FFCCCC**. A complement of this color would be **12968418**, and the grayscale version is **13553358**.

A 20% lighter version of the original color is **16777214**, and **11178127** is the 20% darker color. If you saturate the color by 10%, you get **14856366**, and if you desaturate by 10%, it is **14867676**.

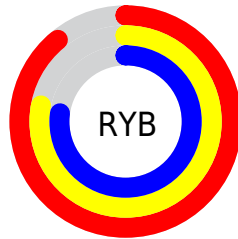
Distribution



Red (89%)

Green (78%)

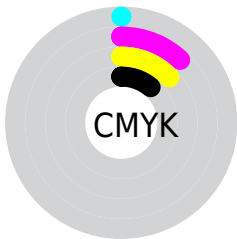
Blue (77%)



Red (89%)

Yellow (78%)

Blue (77%)

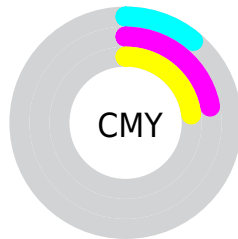


Cyan (0%)

Magenta (12%)

Yellow (13%)

Black (11%)



Cyan (11%)






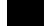
Magenta (22%)

Yellow (23%)

Brightness & Saturation Gradients

These gradients show how the Decimal color 14862021 changes by changing the brightness by 10 percent. The first figure shows a shift by +10% for each color and the second figure -10%.

Similar to the brightness gradients but the following saturation gradients show a change of the Decimal color 14862021 by changing the saturation by 10% instead.

 14862021	 14862021
16777215	 13020074
16777214	 11178127
	 9467766
	 7757405
	 6112838
	 4534319
	 3021595
	 1835008
	 0

 14862021

 14862021

 14856366

 14867676

 14850712

 14873330

 14845313

 14876671

 14839659

 14834004

 14828349

 14822695

 14817040

 14813184

Harmonies

Analogous

The Analogous color harmony consists of three colors that are next to each other on the color wheel.



14665423



14862021



14665917

Triad

The Triadic color harmony groups three colors that are evenly spaced from another and form a triangle on the color wheel.



14862021



12702144



12635872

Complementary

The Complementary color scheme is a pair of colors which are on the opposite of each other on the color wheel.



14862021



12968418

Split Complementary

Split-complementary colors differ from the complementary color scheme. The scheme consists of three colors, the original color and two neighbors of the complement color.



12046812



14862021



12112586

Square

The Square scheme is like the rectangle color scheme, but the four colors are evenly spaced on the color wheel.



14862021



13422266



11850452



13421534

Rectangle

The Rectangle color scheme consists of four colors that form a rectangle on the color wheel.



14862021



14338746



11850452



12373983

Sweetspot

The Sweet Spot groups the original color and five complimentary colors.



14862021



16774645



14861793



8419705



0



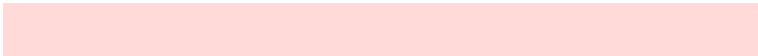
8421504

Same Dimension

The Same Dimension uses a secret algorithm to generate beautiful new colors.



14862021



16767705



14865605



7365989



11535872



3146240

Inverse Universe

The Inverse Universe completely reimagines the original color for something new.



12968418



14286591



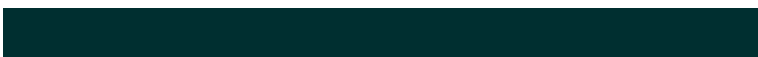
12964834



6647920



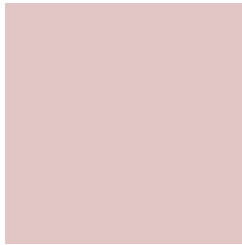
43696



12080

Previews

White Background



This preview shows how the Decimal color 14862021 looks on a white background.

Color Contrast Check

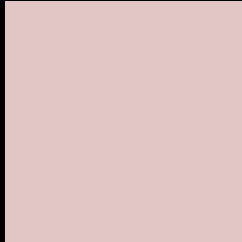
Large Text (above 18pt) WCAG AA × Fail

Any Text WCAG AA × Fail

Large Text (above 18pt) WCAG AAA × Fail

Any Text WCAG AAA × Fail

Black Background



This preview shows how the Decimal color 14862021 looks on a black background.

Color Contrast Check

Large Text (above 18pt) WCAG AA ✓ Pass

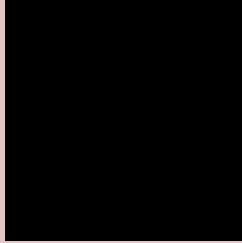
Any Text WCAG AA ✓ Pass

Large Text (above 18pt) WCAG AAA ✓ Pass

Any Text WCAG AAA ✓ Pass

If you want to check with other color combinations, try the [Color Contrast Checker](#).

Decimal 14862021 Background



This preview shows how black text looks on a background with the Decimal color 14862021.

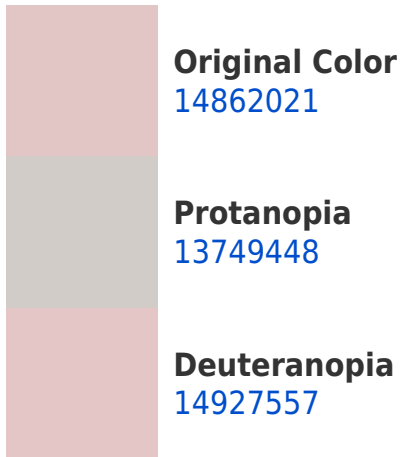



This preview shows how white text looks on a background with the Decimal color 14862021.

Color Blindness Simulation

Color vision deficiency is a very complex topic, and I could not describe the different causes any better than Wikipedia does, so if you want to learn more, you should check out their [article about color blindness](#).

Dichromacy





Tritanopia
14992595

Trichromacy



Original Color
14862021

Protanomaly
14142151

Deuteranomaly
14927557

Tritanomaly
14927310

Monochromacy



Original Color
14862021

Achromatopsia
13553358

Achromatomaly
14011339

CSS Examples

Text

The CSS property to change the color of the text to Decimal 14862021 is called "color". The color property can be set on classes, ids or directly on the HTML element.

This example shows how text in the color #E2C6C5 looks like.

```
.text, #text, p{  
    color:#E2C6C5  
}
```

If you want to add a text shadow in that color use the text-shadow property, you can generate a text shadow directly with our [CSS Text Shadow Generator](#).

Here you see how black text with a 4 pixel #E2C6C5 colored shadow looks like.

```
.shadow{ text-shadow: 4px 4px 2px #E2C6C5
}
```

Border

The CSS property to change the border of an element to Decimal 14862021 is called "border". The border property can be set on classes, ids or directly on the HTML element.

This example shows the color as border, it can be applied via the CSS property "border" or "border-color".

```
.border, #border, table{ border:4px solid
#E2C6C5 }
```

If only the border color should be changed use the property `border-color`.

```
.border{ border-color:#E2C6C5 }
```

If you want to add a box shadow in that color use:

Here you see how a box with a 4 pixel #E2C6C5 colored shadow looks like.

```
.boxshadow{ -moz-box-shadow:4px 4px 4px  
4px #E2C6C5; -webkit-box-shadow:4px 4px  
4px 4px #E2C6C5; box-shadow:4px 4px 4px  
4px #E2C6C5 }
```

Background

The CSS property to change the background color of an element to Decimal 14862021 is called "background". The background property can be set on classes, ids or directly on the HTML element.

```
.background, #background, body{  
background:#E2C6C5 }
```

If only the background color should be changed can be used:

```
.background{ background-color:#E2C6C5 }
```

This example shows the color as background, it is applied via the CSS property "background".

To optimize and compress your CSS code, you can use our [online CSS compressor and optimizer](#) based on csstidy. If you want to create a linear or radial gradient as background or border, check our [CSS Gradient Generator](#).

Hey! You found this booklet interesting? Support Converting Colors with the new Membership Option!

The pro membership hides all ads, plus gives you double the colors in the color bucket, and more awesome pro features!

[Learn more, Memberships starting at \\$2.50/m!](#)

**Follow me
on Twitter!**

@ConvertingColor