

Converting Colors

Decimal(14863038)

Have a look what the booklet for
Decimal(14863038) contains.

Decimal(14863038)	3
<i>Conversions</i>	4
<i>Details</i>	6
<i>Harmonies</i>	11
<i>Previews</i>	23
<i>Color Blindness Simulation</i>	26
<i>CSS Examples</i>	29

Color

Decimal(14863038)

Conversions

Conversions Part 1

Format	Color
Hex	E2CABE
RGB	226, 202, 190
RGB Percent	89%, 79%, 75%
CMY	0.1137, 0.2078, 0.2549
CMYK	0.00, 0.11, 0.16, 0.11
HSL	20°, 38%, 82%
HSV	20°, 16%, 89%
XYZ	61.7788, 62.1275, 57.4509
YIQ	207.8080, 18.1560, 1.3560

Conversions

Conversions Part 2

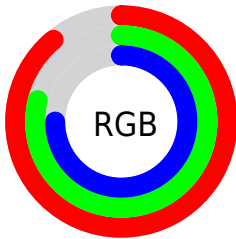
Format	Color
R _Y B	226, 208, 190
Decimal	14863038
CIE Lab	82.98, 6.47, 9.04
CIE LCh	83, 11.122, 54.411
Yxy	62.1275, 0.3406, 0.3426
Android (android.graphics.Color)	4293053118 (0xFFE2CABE)
YUV	207.8080, -8.7793, 15.9544
Hunter-Lab	78.8210, 1.9691, 11.9595

Details

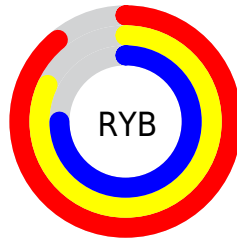
The Decimal color **14863038** is a light color, and the websafe version is hex **CCCCCC**. A complement of this color would be **12506850**, and the grayscale version is **13684944**.

A 20% lighter version of the original color is **16777206**, and **11179145** is the 20% darker color. If you saturate the color by 10%, you get **14859175**, and if you desaturate by 10%, it is **14866901**.

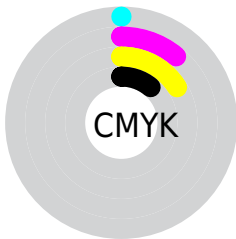
Distribution



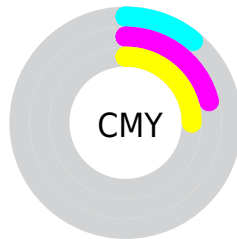
- Red (89%)
- Green (79%)
- Blue (75%)



- Red (89%)
- Yellow (82%)
- Blue (75%)



- Cyan (0%)
- Magenta (11%)
- Yellow (16%)
- Black (11%)



- Cyan (11%)
- Magenta (21%)
- Yellow (25%)

Brightness & Saturation Gradients

These gradients show how the Decimal color 14863038 changes by changing the brightness by 10 percent. The first figure shows a shift by +10% for each color and the second figure -10%.

Similar to the brightness gradients but the following saturation gradients show a change of the Decimal color 14863038 by changing the saturation by 10% instead.

 14863038

 14863038

16777215

 13021091

 16777206

 11179145

 9468527

 7758167

 6113856

 4535082

 3022357

 1705216

 0

14863038

14863038

14859175

14866901

14855313

14870763

14851450

14874623

14847588

14876671

14843725

14839862

14836000

14831881

14830336

Harmonies

Analogous

The Analogous color harmony consists of three colors that are next to each other on the color wheel.



15059142



14863038



14273978

Triad

The Triadic color harmony groups three colors that are evenly spaced from another and form a triangle on the color wheel.



14863038



12178892



13553122

Complementary

The Complementary color scheme is a pair of colors which are on the opposite of each other on the color wheel.



14863038



12506850

Split Complementary

Split-complementary colors differ from the complementary color scheme. The scheme consists of three colors, the original color and two neighbors of the complement color.



12767459



14863038



11916759

Square

The Square scheme is like the rectangle color scheme, but the four colors are evenly spaced on the color wheel.



14863038



12768194



12112863



14404315

Rectangle

The Rectangle color scheme consists of four colors that form a rectangle on the color wheel.



14863038



13815994



12112863



13291235

Sweetspot

The Sweet Spot groups the original color and five complimentary colors.



14863038



16775154



14859990



8419960



0



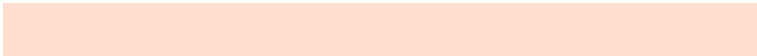
8421504

Same Dimension

The Same Dimension uses a secret algorithm to generate beautiful new colors.



14863038



16768975



14867390



7367013



11549440



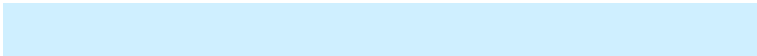
3149824

Inverse Universe

The Inverse Universe completely reimagines the original color for something new.



12506850



13627391



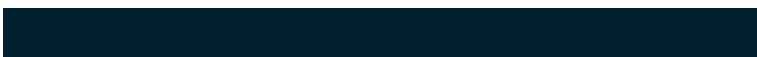
12502242



6646896



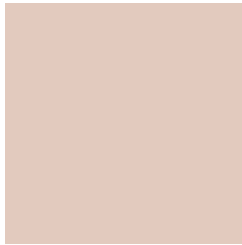
30128



8240

Previews

White Background



This preview shows how the Decimal color 14863038 looks on a white background.

Color Contrast Check

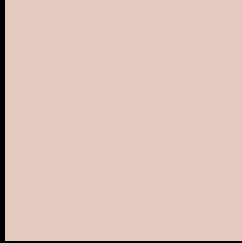
Large Text (above 18pt) WCAG AA × Fail

Any Text WCAG AA × Fail

Large Text (above 18pt) WCAG AAA × Fail

Any Text WCAG AAA × Fail

Black Background



This preview shows how the Decimal color 14863038 looks on a black background.

Color Contrast Check

Large Text (above 18pt) WCAG AA ✓ Pass

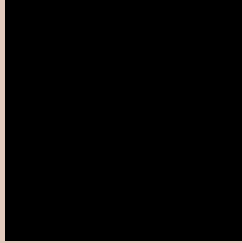
Any Text WCAG AA ✓ Pass

Large Text (above 18pt) WCAG AAA ✓ Pass

Any Text WCAG AAA ✓ Pass

If you want to check with other color combinations, try the [Color Contrast Checker](#).

Decimal 14863038 Background



This preview shows how black text looks on a background with the Decimal color 14863038.



This preview shows how white text looks on a background with the Decimal color 14863038.

Color Blindness Simulation

Color vision deficiency is a very complex topic, and I could not describe the different causes any better than Wikipedia does, so if you want to learn more, you should check out their [article about color blindness](#).

Dichromacy





Tritanopia
15058646

Trichromacy



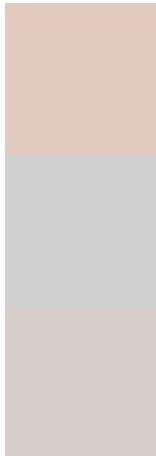
Original Color
14863038

Protanomaly
14339519

Deuteranomaly
15124670

Tritanomaly
14993357

Monochromacy



Original Color
14863038

Achromatopsia
13684944

Achromatomaly
14143177

CSS Examples

Text

The CSS property to change the color of the text to Decimal 14863038 is called "color". The color property can be set on classes, ids or directly on the HTML element.

This example shows how text in the color #E2CABE looks like.

```
.text, #text, p{  
    color:#E2CABE  
}
```

If you want to add a text shadow in that color use the text-shadow property, you can generate a text shadow directly with our [CSS Text Shadow Generator](#).

Here you see how black text with a 4 pixel #E2CABE colored shadow looks like.

```
.shadow{ text-shadow: 4px 4px 2px #E2CABE
}
```

Border

The CSS property to change the border of an element to Decimal 14863038 is called "border". The border property can be set on classes, ids or directly on the HTML element.

This example shows the color as border, it can be applied via the CSS property "border" or "border-color".

```
.border, #border, table{ border:4px solid
#E2CABE }
```

If only the border color should be changed use the property `border-color`.

```
.border{ border-color:#E2CABE }
```

If you want to add a box shadow in that color use:

Here you see how a box with a 4 pixel #E2CABE colored shadow looks like.

```
.boxshadow{ -moz-box-shadow:4px 4px 4px  
4px #E2CABE; -webkit-box-shadow:4px 4px  
4px 4px #E2CABE; box-shadow:4px 4px 4px  
4px #E2CABE }
```

Background

The CSS property to change the background color of an element to Decimal 14863038 is called "background". The background property can be set on classes, ids or directly on the HTML element.

```
.background, #background, body{  
background:#E2CABE }
```

If only the background color should be changed can be used:

```
.background{ background-color:#E2CABE }
```

This example shows the color as background, it is applied via the CSS property "background".

To optimize and compress your CSS code, you can use our [online CSS compressor and optimizer](#) based on csstidy. If you want to create a linear or radial gradient as background or border, check our [CSS Gradient Generator](#).

Hey! You found this booklet interesting? Support Converting Colors with the new Membership Option!

The pro membership hides all ads, plus gives you double the colors in the color bucket, and more awesome pro features!

[Learn more, Memberships starting at \\$2.50/m!](#)

**Follow me
on Twitter!**

@ConvertingColor