

Converting Colors

Decimal(14863053)

Have a look what the booklet for
Decimal(14863053) contains.

Decimal(14863053)	3
<i>Conversions</i>	4
<i>Details</i>	6
<i>Harmonies</i>	11
<i>Previews</i>	23
<i>Color Blindness Simulation</i>	26
<i>CSS Examples</i>	29

Color

Decimal(14863053)

Conversions

Conversions Part 1

Format	Color
Hex	E2CACD
RGB	226, 202, 205
RGB Percent	89%, 79%, 80%
CMY	0.1137, 0.2078, 0.1961
CMYK	0.00, 0.11, 0.09, 0.11
HSL	352°, 29%, 84%
HSV	352°, 11%, 89%
XYZ	63.5040, 62.8176, 66.5356
YIQ	209.5180, 13.3410, 6.0210

Conversions

Conversions Part 2

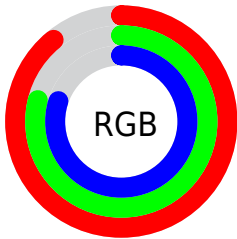
Format	Color
R _Y B	226, 202, 205
Decimal	14863053
CIE Lab	83.35, 8.89, 1.57
CIE LCh	83, 9.031, 10.004
Yxy	62.8176, 0.3293, 0.3257
Android (android.graphics.Color)	4293053133 (0xFFE2CACD)
YUV	209.5180, -2.2274, 14.4547
Hunter-Lab	79.2575, 4.3199, 5.7072

Details

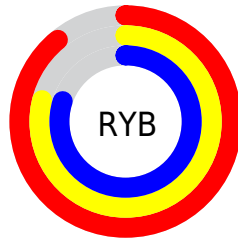
The Decimal color **14863053** is a light color, and the websafe version is hex **CCCCCC**. A complement of this color would be **13296351**, and the grayscale version is **13816530**.

A 20% lighter version of the original color is **16777215**, and **11244695** is the 20% darker color. If you saturate the color by 10%, you get **14857145**, and if you desaturate by 10%, it is **14868961**.

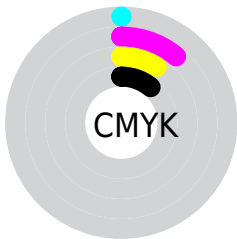
Distribution



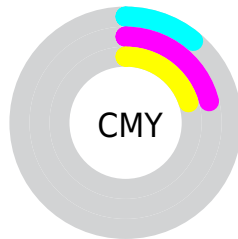
- Red (89%)
- Green (79%)
- Blue (80%)



- Red (89%)
- Yellow (79%)
- Blue (80%)



- Cyan (0%)
- Magenta (11%)
- Yellow (9%)
- Black (11%)



- Cyan (11%)
- Magenta (21%)
- Yellow (20%)

Brightness & Saturation Gradients

These gradients show how the Decimal color 14863053 changes by changing the brightness by 10 percent. The first figure shows a shift by +10% for each color and the second figure -10%.

Similar to the brightness gradients but the following saturation gradients show a change of the Decimal color 14863053 by changing the saturation by 10% instead.

14863053

14863053

16777215

13021106

11244695

9468541

7758180

6113612

4600630

3087904

1836297

0

 14863053

 14863053

 14857145

 14868961

 14851493

 14874613

 14845586

 14876671

 14839934

 14834026

 14828118

 14822467

 14816559

 14811164

Harmonies

Analogous

The Analogous color harmony consists of three colors that are next to each other on the color wheel.



14535638



14863053



14863301

Triad

The Triadic color harmony groups three colors that are evenly spaced from another and form a triangle on the color wheel.



14863053



13292483



12702431

Complementary

The Complementary color scheme is a pair of colors which are on the opposite of each other on the color wheel.



14863053



13296351

Split Complementary

Split-complementary colors differ from the complementary color scheme. The scheme consists of three colors, the original color and two neighbors of the complement color.



12375258



14863053



12702922

Square

The Square scheme is like the rectangle color scheme, but the four colors are evenly spaced on the color wheel.



14863053



13947071



12375506



13291488

Rectangle

The Rectangle color scheme consists of four colors that form a rectangle on the color wheel.



14863053



14666945



12375506



12571614

Sweetspot

The Sweet Spot groups the original color and five complimentary colors.



14863053



16775160



14666466



8419963



0



8421504

Same Dimension

The Same Dimension uses a secret algorithm to generate beautiful new colors.



14863053



16768738



14865354



7365990



11534358



3145734

Inverse Universe

The Inverse Universe completely reimagines the original color for something new.



14863053



16768738



13294050



7365990



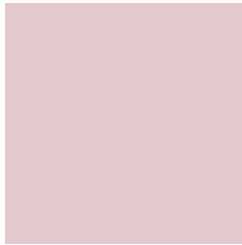
11534358



3145734

Previews

White Background



This preview shows how the Decimal color 14863053 looks on a white background.

Color Contrast Check

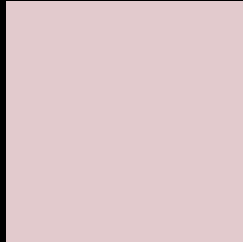
Large Text (above 18pt) WCAG AA × Fail

Any Text WCAG AA × Fail

Large Text (above 18pt) WCAG AAA × Fail

Any Text WCAG AAA × Fail

Black Background



This preview shows how the Decimal color 14863053 looks on a black background.

Color Contrast Check

Large Text (above 18pt) WCAG AA ✓ Pass

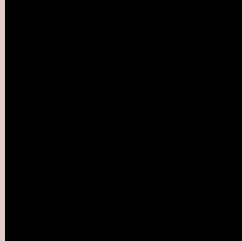
Any Text WCAG AA ✓ Pass

Large Text (above 18pt) WCAG AAA ✓ Pass

Any Text WCAG AAA ✓ Pass

If you want to check with other color combinations, try the [Color Contrast Checker](#).

Decimal 14863053 Background



This preview shows how black text looks on a background with the Decimal color 14863053.




This preview shows how white text looks on a background with the Decimal color 14863053.

Color Blindness Simulation

Color vision deficiency is a very complex topic, and I could not describe the different causes any better than Wikipedia does, so if you want to learn more, you should check out their [article about color blindness](#).

Dichromacy





Tritanopia
14993624

Trichromacy



Original Color
14863053

Protanomaly
14208463

Deuteranomaly
14993869

Tritanomaly
14928340

Monochromacy



Original Color
14863053

Achromatopsia
13816530

Achromatomaly
14208976

CSS Examples

Text

The CSS property to change the color of the text to Decimal 14863053 is called "color". The color property can be set on classes, ids or directly on the HTML element.

This example shows how text in the color #E2CADC looks like.

```
.text, #text, p{  
  color:#E2CADC  
}
```

If you want to add a text shadow in that color use the text-shadow property, you can generate a text shadow directly with our [CSS Text Shadow Generator](#).

Here you see how black text with a 4 pixel #E2CACD colored shadow looks like.

```
.shadow{ text-shadow: 4px 4px 2px #E2CACD
}
```

Border

The CSS property to change the border of an element to Decimal 14863053 is called "border". The border property can be set on classes, ids or directly on the HTML element.

This example shows the color as border, it can be applied via the CSS property "border" or "border-color".

```
.border, #border, table{ border:4px solid
#E2CACD }
```

If only the border color should be changed use the property `border-color`.

```
.border{ border-color:#E2CACD }
```

If you want to add a box shadow in that color use:

Here you see how a box with a 4 pixel #E2CACD colored shadow looks like.

```
.boxshadow{ -moz-box-shadow:4px 4px 4px  
4px #E2CACD; -webkit-box-shadow:4px 4px  
4px 4px #E2CACD; box-shadow:4px 4px 4px  
4px #E2CACD }
```

Background

The CSS property to change the background color of an element to Decimal 14863053 is called "background". The background property can be set on classes, ids or directly on the HTML element.

```
.background, #background, body{  
background:#E2CACD }
```

If only the background color should be changed can be used:

```
.background{ background-color:#E2CACD }
```

This example shows the color as background, it is applied via the CSS property "background".

To optimize and compress your CSS code, you can use our [online CSS compressor and optimizer](#) based on csstidy. If you want to create a linear or radial gradient as background or border, check our [CSS Gradient Generator](#).

Hey! You found this booklet interesting? Support Converting Colors with the new Membership Option!

The pro membership hides all ads, plus gives you double the colors in the color bucket, and more awesome pro features!

[Learn more, Memberships starting at \\$2.50/m!](#)

**Follow me
on Twitter!**

@ConvertingColor