

Converting Colors

Decimal(14863301)

Have a look what the booklet for
Decimal(14863301) contains.

Decimal(14863301)	3
<i>Conversions</i>	4
<i>Details</i>	6
<i>Harmonies</i>	11
<i>Previews</i>	23
<i>Color Blindness Simulation</i>	26
<i>CSS Examples</i>	29

Color

Decimal(14863301)

Conversions

Conversions Part 1

Format	Color
Hex	E2CBC5
RGB	226, 203, 197
RGB Percent	89%, 80%, 77%
CMY	0.1137, 0.2039, 0.2275
CMYK	0.00, 0.10, 0.13, 0.11
HSL	12°, 33%, 83%
HSV	12°, 13%, 89%
XYZ	62.7980, 62.9118, 61.6567
YIQ	209.1930, 15.6340, 3.0100

Conversions

Conversions Part 2

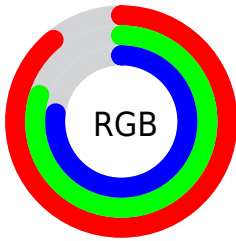
Format	Color
R_{YB}	226, 205, 197
Decimal	14863301
CIE Lab	83.40, 7.05, 5.91
CIE LCh	83, 9.201, 39.952
Yxy	62.9118, 0.3352, 0.3358
Android (android.graphics.Color)	4293053381 (0xFFE2CBC5)
YUV	209.1930, -6.0111, 14.7397
Hunter-Lab	79.3170, 2.5199, 9.4331

Details

The Decimal color **14863301** is a light color, and the websafe version is hex **CCCCCC**. A complement of this color would be **12967138**, and the grayscale version is **13750737**.

A 20% lighter version of the original color is **16777214**, and **11179407** is the 20% darker color. If you saturate the color by 10%, you get **14858670**, and if you desaturate by 10%, it is **14867932**.

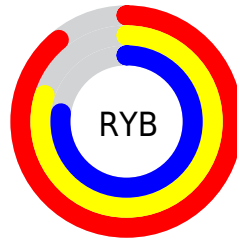
Distribution



Red (89%)

Green (80%)

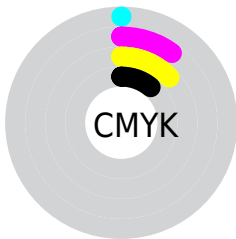
Blue (77%)



Red (89%)

Yellow (80%)

Blue (77%)

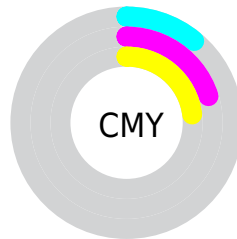


Cyan (0%)

Magenta (10%)

Yellow (13%)

Black (11%)



Cyan (11%)

Magenta (20%)

Yellow (23%)

Brightness & Saturation Gradients

These gradients show how the Decimal color 14863301 changes by changing the brightness by 10 percent. The first figure shows a shift by +10% for each color and the second figure -10%.

Similar to the brightness gradients but the following saturation gradients show a change of the Decimal color 14863301 by changing the saturation by 10% instead.

 14863301	 14863301
16777215	 13021354
16777214	 11179407
	 9468790
	 7758429
	 6113862
	 4535343
	 3022618
	 1836544
	 0

 14863301

 14863301

 14858670

 14867932

 14854040

 14872562

 14849409

 14876671

 14844779

 14840148

 14835517

 14831143

 14826512

 14823168

Harmonies

Analogous

The Analogous color harmony consists of three colors that are next to each other on the color wheel.



14863053



14863301



14536128

Triad

The Triadic color harmony groups three colors that are evenly spaced from another and form a triangle on the color wheel.



14863301



12703178



13291745

Complementary

The Complementary color scheme is a pair of colors which are on the opposite of each other on the color wheel.



14863301



12967138

Split Complementary

Split-complementary colors differ from the complementary color scheme. The scheme consists of three colors, the original color and two neighbors of the complement color.



12702432



14863301



12309970

Square

The Square scheme is like the rectangle color scheme, but the four colors are evenly spaced on the color wheel.



14863301



13292482



12309723



14011869

Rectangle

The Rectangle color scheme consists of four colors that form a rectangle on the color wheel.



14863301



14143423



12309723



13095137

Sweetspot

The Sweet Spot groups the original color and five complimentary colors.



14863301



16775157



14861788



8419961



0



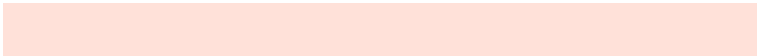
8421504

Same Dimension

The Same Dimension uses a secret algorithm to generate beautiful new colors.



14863301



16769497



14866885



7366501



11543552



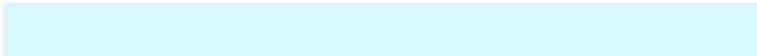
3148288

Inverse Universe

The Inverse Universe completely reimagines the original color for something new.



12967138



14284799



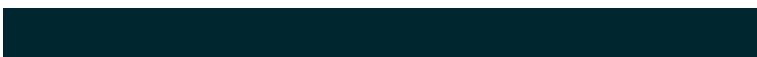
12963554



6647408



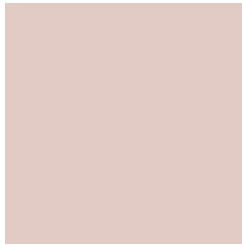
36016



9776

Previews

White Background



This preview shows how the Decimal color 14863301 looks on a white background.

Color Contrast Check

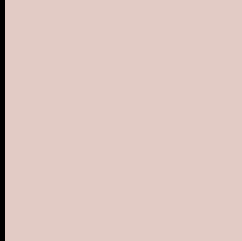
Large Text (above 18pt) WCAG AA × Fail

Any Text WCAG AA × Fail

Large Text (above 18pt) WCAG AAA × Fail

Any Text WCAG AAA × Fail

Black Background



This preview shows how the Decimal color 14863301 looks on a black background.

Color Contrast Check

Large Text (above 18pt) WCAG AA ✓ Pass

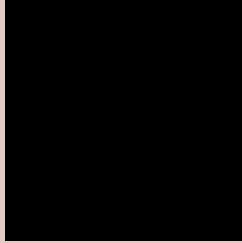
Any Text WCAG AA ✓ Pass

Large Text (above 18pt) WCAG AAA ✓ Pass

Any Text WCAG AAA ✓ Pass

If you want to check with other color combinations, try the [Color Contrast Checker](#).

Decimal 14863301 Background



This preview shows how black text looks on a background with the Decimal color 14863301.



This preview shows how white text looks on a background with the Decimal color 14863301.

Color Blindness Simulation

Color vision deficiency is a very complex topic, and I could not describe the different causes any better than Wikipedia does, so if you want to learn more, you should check out their [article about color blindness](#).

Dichromacy





Tritanopia
15059160

Trichromacy



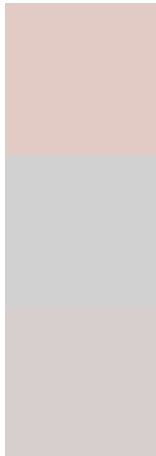
Original Color
14863301

Protanomaly
14339782

Deuteranomaly
15125189

Tritanomaly
14993873

Monochromacy



Original Color
14863301

Achromatopsia
13750737

Achromatomaly
14143437

CSS Examples

Text

The CSS property to change the color of the text to Decimal 14863301 is called "color". The color property can be set on classes, ids or directly on the HTML element.

This example shows how text in the color #E2CBC5 looks like.

```
.text, #text, p{  
    color:#E2CBC5  
}
```

If you want to add a text shadow in that color use the text-shadow property, you can generate a text shadow directly with our [CSS Text Shadow Generator](#).

Here you see how black text with a 4 pixel #E2CBC5 colored shadow looks like.

```
.shadow{ text-shadow: 4px 4px 2px #E2CBC5
}
```

Border

The CSS property to change the border of an element to Decimal 14863301 is called "border". The border property can be set on classes, ids or directly on the HTML element.

This example shows the color as border, it can be applied via the CSS property "border" or "border-color".

```
.border, #border, table{ border:4px solid
#E2CBC5 }
```

If only the border color should be changed use the property `border-color`.

```
.border{ border-color:#E2CBC5 }
```

If you want to add a box shadow in that color use:

Here you see how a box with a 4 pixel #E2CBC5 colored shadow looks like.

```
.boxshadow{ -moz-box-shadow:4px 4px 4px  
4px #E2CBC5; -webkit-box-shadow:4px 4px  
4px 4px #E2CBC5; box-shadow:4px 4px 4px  
4px #E2CBC5 }
```

Background

The CSS property to change the background color of an element to Decimal 14863301 is called "background". The background property can be set on classes, ids or directly on the HTML element.

```
.background, #background, body{  
background:#E2CBC5 }
```

If only the background color should be changed can be used:

```
.background{ background-color:#E2CBC5 }
```

This example shows the color as background, it is applied via the CSS property "background".

To optimize and compress your CSS code, you can use our [online CSS compressor and optimizer](#) based on csstidy. If you want to create a linear or radial gradient as background or border, check our [CSS Gradient Generator](#).

Hey! You found this booklet interesting? Support Converting Colors with the new Membership Option!

The pro membership hides all ads, plus gives you double the colors in the color bucket, and more awesome pro features!

[Learn more, Memberships starting at \\$2.50/m!](#)

**Follow me
on Twitter!**

@ConvertingColor