

Converting Colors

Decimal(14863819)

Have a look what the booklet for
Decimal(14863819) contains.

Decimal(14863819)	3
<i>Conversions</i>	4
<i>Details</i>	6
<i>Harmonies</i>	11
<i>Previews</i>	23
<i>Color Blindness Simulation</i>	26
<i>CSS Examples</i>	29

Color

Decimal(14863819)

Conversions

Conversions Part 1

Format	Color
Hex	E2CDCB
RGB	226, 205, 203
RGB Percent	89%, 80%, 80%
CMY	0.1137, 0.1961, 0.2039
CMYK	0.00, 0.09, 0.10, 0.11
HSL	5°, 28%, 84%
HSV	5°, 10%, 89%
XYZ	63.9748, 64.1432, 65.5089
YIQ	211.0510, 13.1580, 3.8300

Conversions

Conversions Part 2

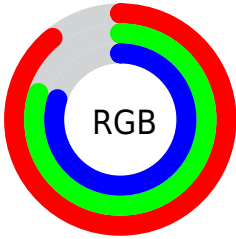
Format	Color
R _Y B	226, 205, 203
Decimal	14863819
CIE Lab	84.04, 6.98, 3.64
CIE LCh	84, 7.873, 27.559
Yxy	64.1432, 0.3304, 0.3313
Android (android.graphics.Color)	4293053899 (0xFFE2CDCB)
YUV	211.0510, -3.9691, 13.1103
Hunter-Lab	80.0894, 2.4279, 7.5665

Details

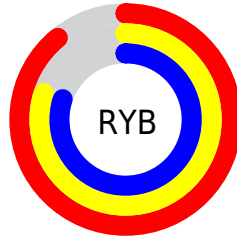
The Decimal color **14863819** is a light color, and the websafe version is hex **CCCCCC**. A complement of this color would be **13361378**, and the grayscale version is **13882323**.

A 20% lighter version of the original color is **16777215**, and **11245461** is the 20% darker color. If you saturate the color by 10%, you get **14858420**, and if you desaturate by 10%, it is **14869218**.

Distribution



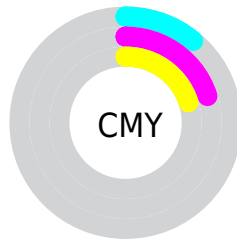
- Red (89%)
- Green (80%)
- Blue (80%)



- Red (89%)
- Yellow (80%)
- Blue (80%)



- Cyan (0%)
- Magenta (9%)
- Yellow (10%)
- Black (11%)



- Cyan (11%)
- Magenta (20%)
- Yellow (20%)

Brightness & Saturation Gradients

These gradients show how the Decimal color 14863819 changes by changing the brightness by 10 percent. The first figure shows a shift by +10% for each color and the second figure -10%.

Similar to the brightness gradients but the following saturation gradients show a change of the Decimal color 14863819 by changing the saturation by 10% instead.

■ 14863819

16777215

■ 14863819

■ 13021872

■ 11245461

■ 9469307

■ 7758946

■ 6114379

■ 4601140

■ 3088415

■ 1771782

■ 0

 14863819

 14863819

 14858420

 14869218

 14853278

 14874360

 14847879

 14876671

 14842481

 14837338

 14831939

 14826797

 14821398

 14816256

Harmonies

Analogous

The Analogous color harmony consists of three colors that are next to each other on the color wheel.



14798290



14863819



14667717

Triad

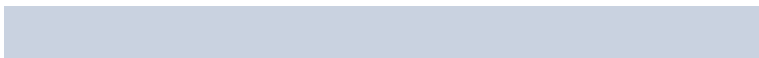
The Triadic color harmony groups three colors that are evenly spaced from another and form a triangle on the color wheel.



14863819



13161929



13226720

Complementary

The Complementary color scheme is a pair of colors which are on the opposite of each other on the color wheel.



14863819



13361378

Split Complementary

Split-complementary colors differ from the complementary color scheme. The scheme consists of three colors, the original color and two neighbors of the complement color.



12768734



14863819



12768977

Square

The Square scheme is like the rectangle color scheme, but the four colors are evenly spaced on the color wheel.



14863819



13685700



12637912



13816031

Rectangle

The Rectangle color scheme consists of four colors that form a rectangle on the color wheel.



14863819



14405827



12637912



13095904

Sweetspot

The Sweet Spot groups the original color and five complimentary colors.



14863819



16775415



14863328



8420218



0



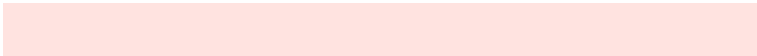
8421504

Same Dimension

The Same Dimension uses a secret algorithm to generate beautiful new colors.



14863819



16770016



14866635



7366245



11538176



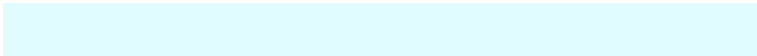
3146752

Inverse Universe

The Inverse Universe completely reimagines the original color for something new.



13361378



14744831



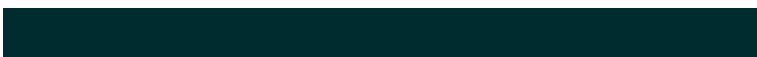
13358562



6647664



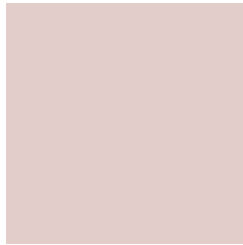
41392



11312

Previews

White Background



This preview shows how the Decimal color 14863819 looks on a white background.

Color Contrast Check

Large Text (above 18pt) WCAG AA × Fail

Any Text WCAG AA × Fail

Large Text (above 18pt) WCAG AAA × Fail

Any Text WCAG AAA × Fail

Black Background



This preview shows how the Decimal color 14863819 looks on a black background.

Color Contrast Check

Large Text (above 18pt) WCAG AA ✓ Pass

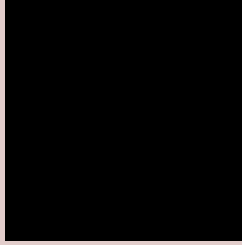
Any Text WCAG AA ✓ Pass

Large Text (above 18pt) WCAG AAA ✓ Pass

Any Text WCAG AAA ✓ Pass

If you want to check with other color combinations, try the [Color Contrast Checker](#).

Decimal 14863819 Background



This preview shows how black text looks on a background with the Decimal color 14863819.



This preview shows how white text looks on a background with the Decimal color 14863819.

Color Blindness Simulation

Color vision deficiency is a very complex topic, and I could not describe the different causes any better than Wikipedia does, so if you want to learn more, you should check out their [article about color blindness](#).


Dichromacy



Original Color
14863819

Protanopia
14078413

Deuteranopia
15256523



Tritanopia
14994394

Trichromacy



Original Color
14863819

Protanomaly
14340300

Deuteranomaly
15125707

Tritanomaly
14929109

Monochromacy



Original Color
14863819

Achromatopsia
13882323

Achromatomaly
14209488

CSS Examples

Text

The CSS property to change the color of the text to Decimal 14863819 is called "color". The color property can be set on classes, ids or directly on the HTML element.

This example shows how text in the color #E2CDCB looks like.

```
.text, #text, p{  
    color:#E2CDCB  
}
```

If you want to add a text shadow in that color use the text-shadow property, you can generate a text shadow directly with our [CSS Text Shadow Generator](#).

Here you see how black text with a 4 pixel #E2CDCB colored shadow looks like.

```
.shadow{ text-shadow: 4px 4px 2px #E2CDCB
}
```

Border

The CSS property to change the border of an element to Decimal 14863819 is called "border". The border property can be set on classes, ids or directly on the HTML element.

This example shows the color as border, it can be applied via the CSS property "border" or "border-color".

```
.border, #border, table{ border:4px solid
#E2CDCB }
```

If only the border color should be changed use the property `border-color`.

```
.border{ border-color:#E2CDCB }
```

If you want to add a box shadow in that color use:

Here you see how a box with a 4 pixel #E2CDCB colored shadow looks like.

```
.boxshadow{ -moz-box-shadow:4px 4px 4px  
4px #E2CDCB; -webkit-box-shadow:4px 4px  
4px 4px #E2CDCB; box-shadow:4px 4px 4px  
4px #E2CDCB }
```

Background

The CSS property to change the background color of an element to Decimal 14863819 is called "background". The background property can be set on classes, ids or directly on the HTML element.

```
.background, #background, body{  
background:#E2CDCB }
```

If only the background color should be changed can be used:

```
.background{ background-color:#E2CDCB }
```

This example shows the color as background, it is applied via the CSS property "background".

To optimize and compress your CSS code, you can use our [online CSS compressor and optimizer](#) based on csstidy. If you want to create a linear or radial gradient as background or border, check our [CSS Gradient Generator](#).

Hey! You found this booklet interesting? Support Converting Colors with the new Membership Option!

The pro membership hides all ads, plus gives you double the colors in the color bucket, and more awesome pro features!

[Learn more, Memberships starting at \\$2.50/m!](#)

**Follow me
on Twitter!**

@ConvertingColor