

# Converting Colors

Decimal(14886251)

Have a look what the booklet for  
Decimal(14886251) contains.

<b>Decimal(14886251)</b> .....	3
<i><b>Conversions</b></i> .....	4
<i><b>Details</b></i> .....	6
<i><b>Harmonies</b></i> .....	11
<i><b>Previews</b></i> .....	23
<i><b>Color Blindness Simulation</b></i> .....	26
<i><b>CSS Examples</b></i> .....	29

# Color

**Decimal(14886251)**

# Conversions

## Conversions Part 1

<b>Format</b>	<b>Color</b>
Hex	E3256B
RGB	227, 37, 107
RGB Percent	89%, 15%, 42%
CMY	0.1098, 0.8549, 0.5804
CMYK	0.00, 0.84, 0.53, 0.11
HSL	338°, 77%, 52%
HSV	338°, 84%, 89%
XYZ	34.9940, 18.7156, 15.6780
YIQ	101.7900, 90.7700, 62.0500

# Conversions

## Conversions Part 2

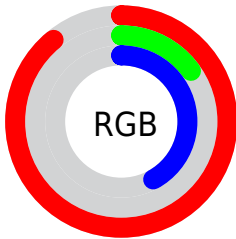
<b>Format</b>	<b>Color</b>
<b>R<sub>YB</sub></b>	227, 37, 107
Decimal	14886251
CIE Lab	50.35, 72.36, 9.57
CIE LCh	50, 72.989, 7.537
Yxy	18.7156, 0.5043, 0.2697
Android (android.graphics.Color)	4293076331 (0xFFE3256B)
YUV	101.7900, 2.5685, 109.8092
Hunter-Lab	43.2615, 68.6800, 8.7963

# Details

The Decimal color **14886251** is a dark color, and the websafe version is hex **CC0066**, and the color name is **razzmatazz**. The color can be described as dark washed rose. A complement of this color would be **2483101**, and the grayscale version is **6710886**.

A 20% lighter version of the original color is **16738718**, and **10813500** is the 20% darker color. If you saturate the color by 10%, you get **14880349**, and if you desaturate by 10%, it is **14892153**.

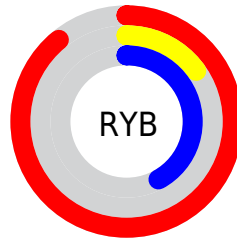
# Distribution



Red (89%)

Green (15%)

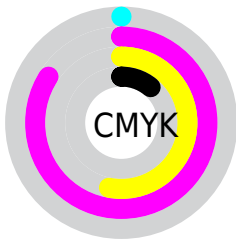
Blue (42%)



Red (89%)

Yellow (15%)

Blue (42%)

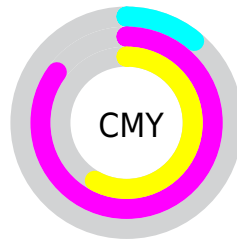


Cyan (0%)

Magenta (84%)

Yellow (53%)

Black (11%)



Cyan (11%)

Magenta (85%)

Yellow (58%)

# Brightness & Saturation Gradients

These gradients show how the Decimal color 14886251 changes by changing the brightness by 10 percent. The first figure shows a shift by +10% for each color and the second figure -10%.

Similar to the brightness gradients but the following saturation gradients show a change of the Decimal color 14886251 by changing the saturation by 10% instead.



 14886251

 14886251

16777215

 12845139

 16738718

 10813500

 16746425

 8781863

 16753876

 6815763

 16761585

 4915204

 16769279

 2818049

16776959

 0

 14886251

 14886251

 14880349

 14892153

■ 14876756

■ 14897800

■ 14903702

■ 14909604

■ 14915251

■ 14921153

■ 14927055

■ 14932958

■ 14938604

# Harmonies

## Analogous

The Analogous color harmony consists of three colors that are next to each other on the color wheel.



13384361



14886251



14237999

# Triad

The Triadic color harmony groups three colors that are evenly spaced from another and form a triangle on the color wheel.



14886251



4032768



35819

# Complementary

The Complementary color scheme is a pair of colors which are on the opposite of each other on the color wheel.



14886251



2483101

# Split Complementary

Split-complementary colors differ from the complementary color scheme. The scheme consists of three colors, the original color and two neighbors of the complement color.



37571



14886251



36933

# Square

The Square scheme is like the rectangle color scheme, but the four colors are evenly spaced on the color wheel.



14886251



8616448



37766



31733

# Rectangle

The Rectangle color scheme consists of four colors that form a rectangle on the color wheel.



14886251



12867584



37766



36577



# Sweetspot

The Sweet Spot groups the original color and five complimentary colors.



14886251



16760791



10102243



8411495



0



8421504



# Same Dimension

The Same Dimension uses a secret algorithm to generate beautiful new colors.



14886251



16711774



14891813



7563116



11731010



3342355



# Inverse Universe

The Inverse Universe completely reimagines the original color for something new.



14886251



16711774



2477539



7563116



11731010



3342355



# Previews

## White Background



This preview shows how the Decimal color 14886251 looks on a white background.

## Color Contrast Check

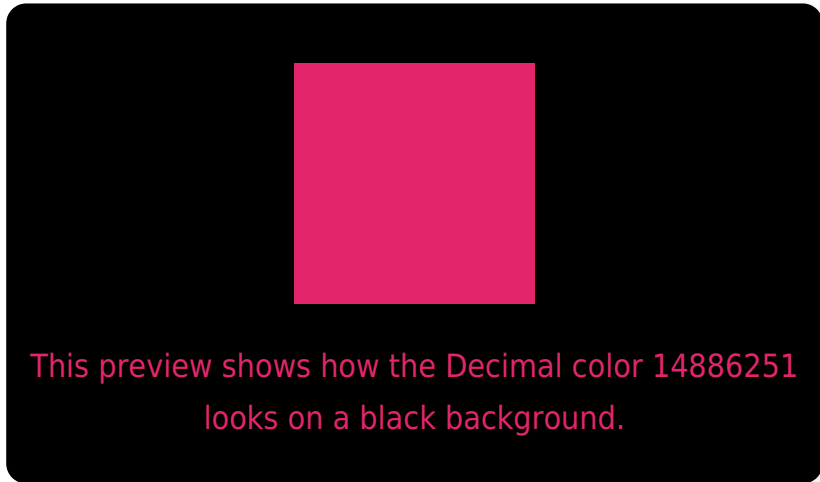
Large Text (above 18pt) WCAG AA ✓ Pass

Any Text WCAG AA × Fail

Large Text (above 18pt) WCAG AAA × Fail

Any Text WCAG AAA × Fail

# Black Background



## Color Contrast Check

Large Text (above 18pt) WCAG AA ✓ Pass

Any Text WCAG AA ✓ Pass

Large Text (above 18pt) WCAG AAA ✓ Pass

Any Text WCAG AAA × Fail

If you want to check with other color combinations, try the [Color Contrast Checker](#).



## Decimal 14886251 Background



This preview shows how black text looks on a background with the Decimal color 14886251.

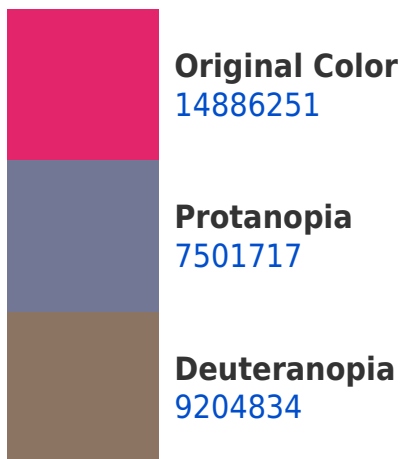


This preview shows how white text looks on a background with the Decimal color 14886251.

# Color Blindness Simulation

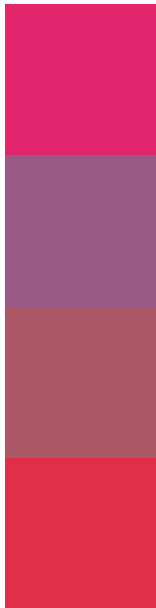
Color vision deficiency is a very complex topic, and I could not describe the different causes any better than Wikipedia does, so if you want to learn more, you should check out their [article about color blindness](#).

## Dichromacy





# Trichromacy



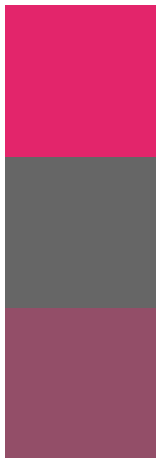
**Original Color**  
14886251

**Protanomaly**  
10180998

**Deuteranomaly**  
11294565

**Tritanomaly**  
14823241

# Monochromacy



**Original Color**  
14886251

**Achromatopsia**  
6710886

**Achromatomaly**  
9653864

# CSS Examples

## Text

The CSS property to change the color of the text to Decimal 14886251 is called "color". The color property can be set on classes, ids or directly on the HTML element.

This example shows how text in the color #E3256B looks like.

```
.text, #text, p{  
    color:#E3256B  
}
```

If you want to add a text shadow in that color use the text-shadow property, you can generate a text shadow directly with our [CSS Text Shadow Generator](#).

Here you see how black text with a 4 pixel #E3256B colored shadow looks like.

```
.shadow{ text-shadow: 4px 4px 2px #E3256B
}
```

## Border

The CSS property to change the border of an element to Decimal 14886251 is called "border". The border property can be set on classes, ids or directly on the HTML element.

This example shows the color as border, it can be applied via the CSS property "border" or "border-color".

```
.border, #border, table{ border:4px solid
#E3256B }
```

If only the border color should be changed use the property `border-color`.

```
.border{ border-color:#E3256B }
```

If you want to add a box shadow in that color use:

Here you see how a box with a 4 pixel #E3256B colored shadow looks like.

```
.boxshadow{ -moz-box-shadow:4px 4px 4px  
4px #E3256B; -webkit-box-shadow:4px 4px  
4px 4px #E3256B; box-shadow:4px 4px 4px  
4px #E3256B }
```

# Background

The CSS property to change the background color of an element to Decimal 14886251 is called "background". The background property can be set on classes, ids or directly on the HTML element.

```
.background, #background, body{  
background:#E3256B }
```

If only the background color should be changed can be used:

```
.background{ background-color:#E3256B }
```

This example shows the color as background, it is applied via the CSS property "background".

To optimize and compress your CSS code, you can use our [online CSS compressor and optimizer](#) based on csstidy. If you want to create a linear or radial gradient as background or border, check our [CSS Gradient Generator](#).



Hey! You found this booklet interesting? Support Converting Colors with the new Membership Option!

The pro membership hides all ads, plus gives you double the colors in the color bucket, and more awesome pro features!

**[Learn more, Memberships starting at \\$2.50/m!](#)**

**Follow me  
on Twitter!**

@ConvertingColor