

# Converting Colors

Decimal(14895735)

Have a look what the booklet for  
Decimal(14895735) contains.

<b>Decimal(14895735)</b> .....	3
<i><b>Conversions</b></i> .....	4
<i><b>Details</b></i> .....	6
<i><b>Harmonies</b></i> .....	11
<i><b>Previews</b></i> .....	23
<i><b>Color Blindness Simulation</b></i> .....	26
<i><b>CSS Examples</b></i> .....	29

# Color

**Decimal(14895735)**

# Conversions

## Conversions Part 1

<b>Format</b>	<b>Color</b>
Hex	E34A77
RGB	227, 74, 119
RGB Percent	89%, 29%, 47%
CMY	0.1098, 0.7098, 0.5333
CMYK	0.00, 0.67, 0.48, 0.11
HSL	342°, 73%, 59%
HSV	342°, 67%, 89%
XYZ	37.4571, 22.5604, 19.8331
YIQ	124.8770, 76.7430, 46.4310

# Conversions

## Conversions Part 2

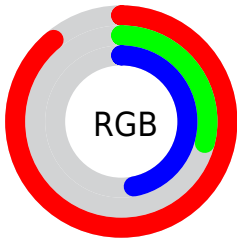
<b>Format</b>	<b>Color</b>
<b>R<sub>YB</sub></b>	227, 74, 119
Decimal	14895735
CIE <sub>Lab</sub>	54.62, 62.20, 8.38
CIE <sub>LCh</sub>	55, 62.760, 7.674
Yxy	22.5604, 0.4691, 0.2825
Android (android.graphics.Color)	4293085815 (0xFFE34A77)
YUV	124.8770, -2.8974, 89.5619
Hunter-Lab	47.4977, 57.6455, 8.4913

# Details

The Decimal color **14895735** is a dark color, and the websafe version is hex **CC3366**. The color can be described as middle muted rose. A complement of this color would be **4907958**, and the grayscale version is **8224125**.

A 20% lighter version of the original color is **16745387**, and **10879047** is the 20% darker color. If you saturate the color by 10%, you get **14889831**, and if you desaturate by 10%, it is **14901639**.

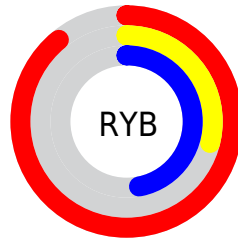
# Distribution



Red (89%)

Green (29%)

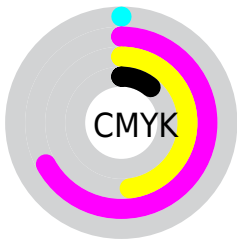
Blue (47%)



Red (89%)

Yellow (29%)

Blue (47%)

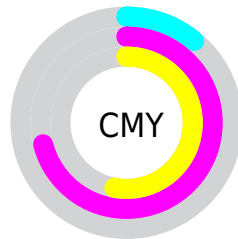


Cyan (0%)

Magenta (67%)

Yellow (48%)

Black (11%)



Cyan (11%)

Magenta (71%)

Yellow (53%)

# Brightness & Saturation Gradients

These gradients show how the Decimal color 14895735 changes by changing the brightness by 10 percent. The first figure shows a shift by +10% for each color and the second figure -10%.

Similar to the brightness gradients but the following saturation gradients show a change of the Decimal color 14895735 by changing the saturation by 10% instead.



 14895735

 14895735

16777215

 12855902

 16745387

 10879047

 16752838

 8912945

 16760290

 7012381

 16767743

 5111809

 16775423

 3211266

 0

 14895735

 14895735

 14889831

 14901639

■ 14884183

■ 14907287

■ 14878279

■ 14913191

■ 14876739

■ 14919095

■ 14924999

■ 14930647

■ 14936551

■ 14942199

■ 14942207

# Harmonies

## Analogous

The Analogous color harmony consists of three colors that are next to each other on the color wheel.



13522349



14895735



14375235

# Triad

The Triadic color harmony groups three colors that are evenly spaced from another and form a triangle on the color wheel.



14895735



5607970



37863

# Complementary

The Complementary color scheme is a pair of colors which are on the opposite of each other on the color wheel.



14895735



4907958

# Split Complementary

Split-complementary colors differ from the complementary color scheme. The scheme consists of three colors, the original color and two neighbors of the complement color.



39620



14895735



39255

# Square

The Square scheme is like the rectangle color scheme, but the four colors are evenly spaced on the color wheel.



14895735



9471232



40080



34287

# Rectangle

The Rectangle color scheme consists of four colors that form a rectangle on the color wheel.



14895735



13199651



40080



38622



# Sweetspot

The Sweet Spot groups the original color and five complimentary colors.



14895735



16764123



11881187



8413546



0



8421504



# Same Dimension

The Same Dimension uses a secret algorithm to generate beautiful new colors.



14895735



16724077



14903626



7563115



11730996



3342351



# Inverse Universe

The Inverse Universe completely reimagines the original color for something new.



14895735



16724077



4900067



7563115



11730997



3342351



# Previews

## White Background



This preview shows how the Decimal color 14895735 looks on a white background.

## Color Contrast Check

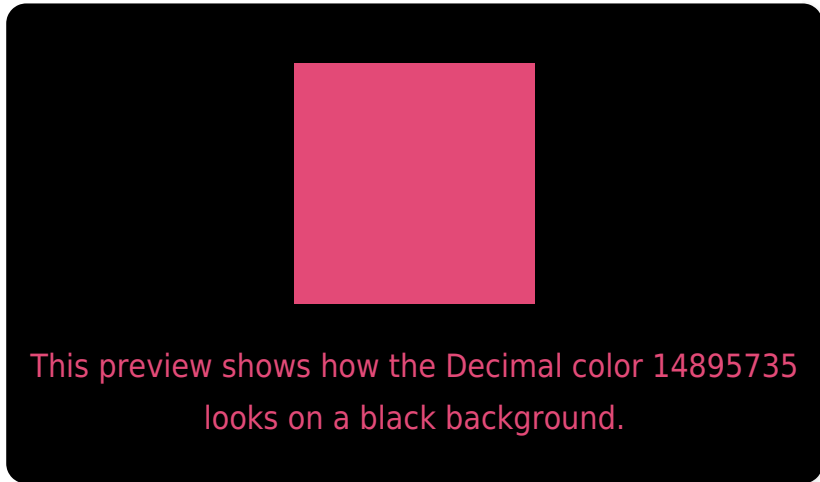
Large Text (above 18pt) WCAG AA ✓ Pass

Any Text WCAG AA × Fail

Large Text (above 18pt) WCAG AAA × Fail

Any Text WCAG AAA × Fail

# Black Background



## Color Contrast Check

Large Text (above 18pt) WCAG AA ✓ Pass

Any Text WCAG AA ✓ Pass

Large Text (above 18pt) WCAG AAA ✓ Pass

Any Text WCAG AAA × Fail

If you want to check with other color combinations, try the [Color Contrast Checker](#).



## Decimal 14895735 Background



This preview shows how black text looks on a background with the Decimal color 14895735.

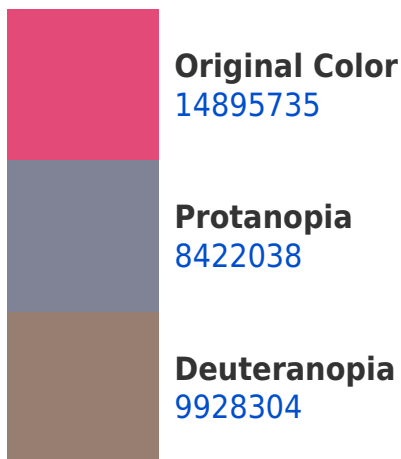


This preview shows how white text looks on a background with the Decimal color 14895735.

# Color Blindness Simulation

Color vision deficiency is a very complex topic, and I could not describe the different causes any better than Wikipedia does, so if you want to learn more, you should check out their [article about color blindness](#).

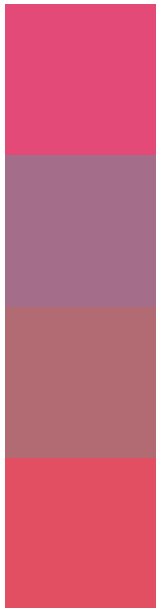
## Dichromacy





**Tritanopia**  
14766422

# Trichromacy



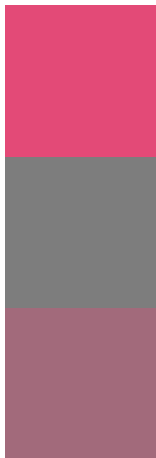
**Original Color**  
14895735

**Protanomaly**  
10776203

**Deuteranomaly**  
11758451

**Tritanomaly**  
14831202

# Monochromacy



**Original Color**  
14895735

**Achromatopsia**  
8224125

**Achromatomaly**  
10644091

# CSS Examples

## Text

The CSS property to change the color of the text to Decimal 14895735 is called "color". The color property can be set on classes, ids or directly on the HTML element.

This example shows how text in the color #E34A77 looks like.

```
.text, #text, p{  
  color:#E34A77  
}
```

If you want to add a text shadow in that color use the text-shadow property, you can generate a text shadow directly with our [CSS Text Shadow Generator](#).

Here you see how black text with a 4 pixel #E34A77 colored shadow looks like.

```
.shadow{ text-shadow: 4px 4px 2px #E34A77
}
```

## Border

The CSS property to change the border of an element to Decimal 14895735 is called "border". The border property can be set on classes, ids or directly on the HTML element.

This example shows the color as border, it can be applied via the CSS property "border" or "border-color".

```
.border, #border, table{ border:4px solid
#E34A77 }
```

If only the border color should be changed use the property `border-color`.

```
.border{ border-color:#E34A77 }
```

If you want to add a box shadow in that color use:

Here you see how a box with a 4 pixel #E34A77 colored shadow looks like.

```
.boxshadow{ -moz-box-shadow:4px 4px 4px  
4px #E34A77; -webkit-box-shadow:4px 4px  
4px 4px #E34A77; box-shadow:4px 4px 4px  
4px #E34A77 }
```

# Background

The CSS property to change the background color of an element to Decimal 14895735 is called "background". The background property can be set on classes, ids or directly on the HTML element.

```
.background, #background, body{  
background:#E34A77 }
```

If only the background color should be changed can be used:

```
.background{ background-color:#E34A77 }
```

This example shows the color as background, it is applied via the CSS property "background".

To optimize and compress your CSS code, you can use our [online CSS compressor and optimizer](#) based on csstidy. If you want to create a linear or radial gradient as background or border, check our [CSS Gradient Generator](#).



Hey! You found this booklet interesting? Support Converting Colors with the new Membership Option!

The pro membership hides all ads, plus gives you double the colors in the color bucket, and more awesome pro features!

**[Learn more, Memberships starting at \\$2.50/m!](#)**

**Follow me  
on Twitter!**

@ConvertingColor