

Converting Colors

Decimal(14900096)

Have a look what the booklet for
Decimal(14900096) contains.

Decimal(14900096)	3
<i>Conversions</i>	4
<i>Details</i>	6
<i>Harmonies</i>	11
<i>Previews</i>	23
<i>Color Blindness Simulation</i>	26
<i>CSS Examples</i>	29

Color

Decimal(14900096)

Conversions

Conversions Part 1

Format	Color
Hex	E35B80
RGB	227, 91, 128
RGB Percent	89%, 36%, 50%
CMY	0.1098, 0.6431, 0.4980
CMYK	0.00, 0.60, 0.44, 0.11
HSL	344°, 71%, 62%
HSV	344°, 60%, 89%
XYZ	39.3159, 25.3716, 23.2471
YIQ	135.8820, 69.1790, 40.3390

Conversions

Conversions Part 2

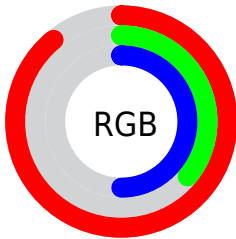
Format	Color
R_{YB}	227, 91, 128
Decimal	14900096
CIE _{Lab}	57.44, 56.01, 7.08
CIE _{LCh}	57, 56.458, 7.201
Yxy	25.3716, 0.4471, 0.2885
Android (android.graphics.Color)	4293090176 (0xFFE35B80)
YUV	135.8820, -3.8858, 79.9105
Hunter-Lab	50.3702, 51.1784, 7.8953

Details

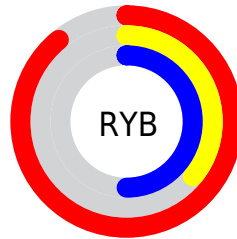
The Decimal color **14900096** is a light color, and the websafe version is hex **FF6699**. The color can be described as light muted rose. A complement of this color would be **6022078**, and the grayscale version is **8947848**.

A 20% lighter version of the original color is **16749493**, and **10952527** is the 20% darker color. If you saturate the color by 10%, you get **14894191**, and if you desaturate by 10%, it is **14906001**.

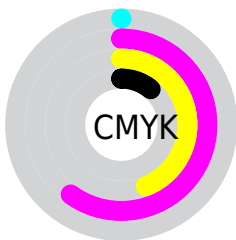
Distribution



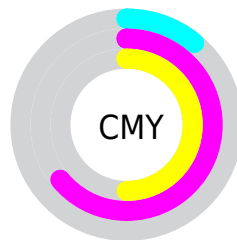
- Red (89%)
- Green (36%)
- Blue (50%)



- Red (89%)
- Yellow (36%)
- Blue (50%)



- Cyan (0%)
- Magenta (60%)
- Yellow (44%)
- Black (11%)



- Cyan (11%)
- Magenta (64%)
- Yellow (50%)

Brightness & Saturation Gradients

These gradients show how the Decimal color 14900096 changes by changing the brightness by 10 percent. The first figure shows a shift by +10% for each color and the second figure -10%.

Similar to the brightness gradients but the following saturation gradients show a change of the Decimal color 14900096 by changing the saturation by 10% instead.

 14900096

 14900096

16777215

 12926823

 16749493

 10952527

 16756688

 9044025

 16763884

 7143459

 16771583

 5242893

 3538946

 327680

 0

 14900096

 14900096

 14894191

 14906001

 14888543

 14911649

 14882638

 14917554

 14876734

 14923458

 14929363

 14935011

 14940916

 14942207

Harmonies

Analogous

The Analogous color harmony consists of three colors that are next to each other on the color wheel.



13591473



14900096



14509649

Triad

The Triadic color harmony groups three colors that are evenly spaced from another and form a triangle on the color wheel.



14900096



6592565



39396

Complementary

The Complementary color scheme is a pair of colors which are on the opposite of each other on the color wheel.



14900096



6022078

Split Complementary

Split-complementary colors differ from the complementary color scheme. The scheme consists of three colors, the original color and two neighbors of the complement color.



41156



14900096



40802

Square

The Square scheme is like the rectangle color scheme, but the four colors are evenly spaced on the color wheel.



14900096



10062620



41621



3312876

Rectangle

The Rectangle color scheme consists of four colors that form a rectangle on the color wheel.



1490096



13398838



41621



40156

Sweetspot

The Sweet Spot groups the original color and five complimentary colors.



14900096



16765406



12344291



8414059



0



8421504

Same Dimension

The Same Dimension uses a secret algorithm to generate beautiful new colors.



14900096



16729977



14907483



7563114



11730993



3342350

Inverse Universe

The Inverse Universe completely reimagines the original color for something new.



14900096



16729977



6014691



7563114



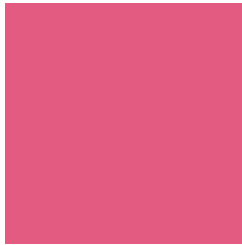
11730993



3342350

Previews

White Background



This preview shows how the Decimal color 14900096 looks on a white background.

Color Contrast Check

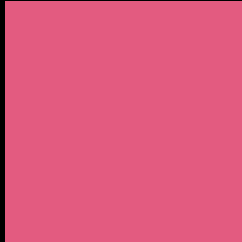
Large Text (above 18pt) WCAG AA ✓ Pass

Any Text WCAG AA × Fail

Large Text (above 18pt) WCAG AAA × Fail

Any Text WCAG AAA × Fail

Black Background



This preview shows how the Decimal color 14900096 looks on a black background.

Color Contrast Check

Large Text (above 18pt) WCAG AA ✓ Pass

Any Text WCAG AA ✓ Pass

Large Text (above 18pt) WCAG AAA ✓ Pass

Any Text WCAG AAA × Fail

If you want to check with other color combinations, try the [Color Contrast Checker](#).

Decimal 14900096 Background



This preview shows how black text looks on a background with the Decimal color 14900096.

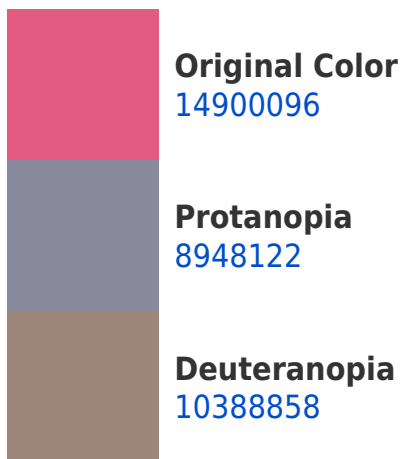


This preview shows how white text looks on a background with the Decimal color 14900096.

Color Blindness Simulation

Color vision deficiency is a very complex topic, and I could not describe the different causes any better than Wikipedia does, so if you want to learn more, you should check out their [article about color blindness](#).

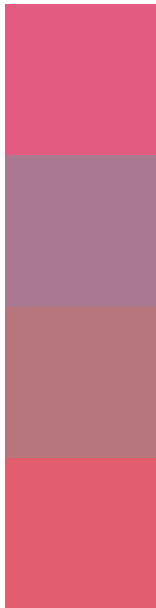
Dichromacy





Tritanopia
14770278

Trichromacy



Original Color
14900096

Protanomaly
11106449

Deuteranomaly
12023420

Tritanomaly
14835311

Monochromacy



Original Color
14900096

Achromatopsia
8947848

Achromatomaly
11106437

CSS Examples

Text

The CSS property to change the color of the text to Decimal 14900096 is called "color". The color property can be set on classes, ids or directly on the HTML element.

This example shows how text in the color #E35B80 looks like.

```
.text, #text, p{  
    color:#E35B80  
}
```

If you want to add a text shadow in that color use the text-shadow property, you can generate a text shadow directly with our [CSS Text Shadow Generator](#).

Here you see how black text with a 4 pixel #E35B80 colored shadow looks like.

```
.shadow{ text-shadow: 4px 4px 2px #E35B80
}
```

Border

The CSS property to change the border of an element to Decimal 14900096 is called "border". The border property can be set on classes, ids or directly on the HTML element.

This example shows the color as border, it can be applied via the CSS property "border" or "border-color".

```
.border, #border, table{ border:4px solid
#E35B80 }
```

If only the border color should be changed use the property `border-color`.

```
.border{ border-color:#E35B80 }
```

If you want to add a box shadow in that color use:

Here you see how a box with a 4 pixel #E35B80 colored shadow looks like.

```
.boxshadow{ -moz-box-shadow:4px 4px 4px  
4px #E35B80; -webkit-box-shadow:4px 4px  
4px 4px #E35B80; box-shadow:4px 4px 4px  
4px #E35B80 }
```

Background

The CSS property to change the background color of an element to Decimal 14900096 is called "background". The background property can be set on classes, ids or directly on the HTML element.

```
.background, #background, body{  
background:#E35B80 }
```

If only the background color should be changed can be used:

```
.background{ background-color:#E35B80 }
```

This example shows the color as background, it is applied via the CSS property "background".

To optimize and compress your CSS code, you can use our [online CSS compressor and optimizer](#) based on csstidy. If you want to create a linear or radial gradient as background or border, check our [CSS Gradient Generator](#).

Hey! You found this booklet interesting? Support Converting Colors with the new Membership Option!

The pro membership hides all ads, plus gives you double the colors in the color bucket, and more awesome pro features!

[Learn more, Memberships starting at \\$2.50/m!](#)

**Follow me
on Twitter!**

@ConvertingColor