

Converting Colors

Decimal(14900356)

Have a look what the booklet for
Decimal(14900356) contains.

Decimal(14900356)	3
<i>Conversions</i>	4
<i>Details</i>	6
<i>Harmonies</i>	11
<i>Previews</i>	23
<i>Color Blindness Simulation</i>	26
<i>CSS Examples</i>	29

Color

Decimal(14900356)

Conversions

Conversions Part 1

Format	Color
Hex	E35C84
RGB	227, 92, 132
RGB Percent	89%, 36%, 52%
CMY	0.1098, 0.6392, 0.4824
CMYK	0.00, 0.59, 0.42, 0.11
HSL	342°, 71%, 63%
HSV	342°, 59%, 89%
XYZ	39.6706, 25.6511, 24.6901
YIQ	136.9250, 67.6200, 41.0600

Conversions

Conversions Part 2

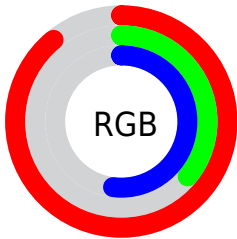
Format	Color
R_{YB}	227, 92, 132
Decimal	14900356
CIE Lab	57.70, 55.97, 5.12
CIE LCh	58, 56.205, 5.223
Yxy	25.6511, 0.4407, 0.2850
Android (android.graphics.Color)	4293090436 (0xFFE35C84)
YUV	136.9250, -2.4280, 78.9958
Hunter-Lab	50.6469, 51.1827, 6.5493

Details

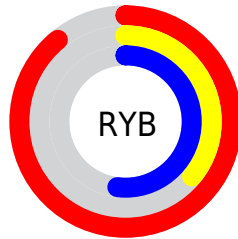
The Decimal color **14900356** is a light color, and the websafe version is hex **FF6699**. The color can be described as light muted rose. A complement of this color would be **6087611**, and the grayscale version is **9013641**.

A 20% lighter version of the original color is **16749497**, and **10953043** is the 20% darker color. If you saturate the color by 10%, you get **14894452**, and if you desaturate by 10%, it is **14906260**.

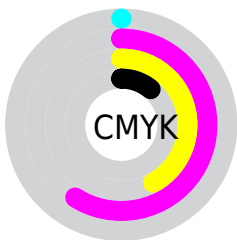
Distribution



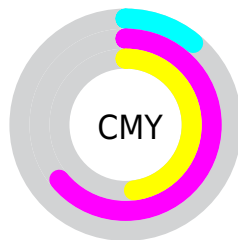
- Red (89%)
- Green (36%)
- Blue (52%)



- Red (89%)
- Yellow (36%)
- Blue (52%)



- Cyan (0%)
- Magenta (59%)
- Yellow (42%)
- Black (11%)



- Cyan (11%)
- Magenta (64%)
- Yellow (48%)

Brightness & Saturation Gradients

These gradients show how the Decimal color 14900356 changes by changing the brightness by 10 percent. The first figure shows a shift by +10% for each color and the second figure -10%.

Similar to the brightness gradients but the following saturation gradients show a change of the Decimal color 14900356 by changing the saturation by 10% instead.

 14900356

 14900356

16777215

 12927083

 16749497

 10953043

 16756948

 9044028

 16764145

 7143463

 16771839

 5308434

 3538946

 524288

 0

 14900356

 14900356

14894452

14906260

14888804

14911908

14882900

14917812

14876996

14923716

14876739

14929620

14935268

14941172

14942207

Harmonies

Analogous

The Analogous color harmony consists of three colors that are next to each other on the color wheel.



13460917



14900356



14575189

Triad

The Triadic color harmony groups three colors that are evenly spaced from another and form a triangle on the color wheel.



14900356



6920244



39907

Complementary

The Complementary color scheme is a pair of colors which are on the opposite of each other on the color wheel.



14900356



6087611

Split Complementary

Split-complementary colors differ from the complementary color scheme. The scheme consists of three colors, the original color and two neighbors of the complement color.



41410



14900356



40799

Square

The Square scheme is like the rectangle color scheme, but the four colors are evenly spaced on the color wheel.



14900356



10259229



41618



2461165

Rectangle

The Rectangle color scheme consists of four colors that form a rectangle on the color wheel.



14900356



13595194



41618



40411

Sweetspot

The Sweet Spot groups the original color and five complimentary colors.



14900356



16765407



12279011



8414060



0



8421504

Same Dimension

The Same Dimension uses a secret algorithm to generate beautiful new colors.



14900356



16730752



14907228



7563115



11730997



3342351

Inverse Universe

The Inverse Universe completely reimagines the original color for something new.



14900356



16730752



6080739



7563115



11730997



3342351

Previews

White Background



This preview shows how the Decimal color 14900356 looks on a white background.

Color Contrast Check

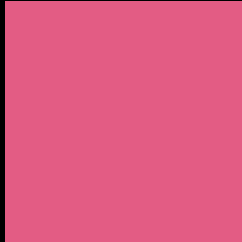
Large Text (above 18pt) WCAG AA ✓ Pass

Any Text WCAG AA × Fail

Large Text (above 18pt) WCAG AAA × Fail

Any Text WCAG AAA × Fail

Black Background



This preview shows how the Decimal color 14900356 looks on a black background.

Color Contrast Check

Large Text (above 18pt) WCAG AA ✓ Pass

Any Text WCAG AA ✓ Pass

Large Text (above 18pt) WCAG AAA ✓ Pass

Any Text WCAG AAA × Fail

If you want to check with other color combinations, try the [Color Contrast Checker](#).

Decimal 14900356 Background



This preview shows how black text looks on a background with the Decimal color 14900356.



This preview shows how white text looks on a background with the Decimal color 14900356.

Color Blindness Simulation

Color vision deficiency is a very complex topic, and I could not describe the different causes any better than Wikipedia does, so if you want to learn more, you should check out their [article about color blindness](#).

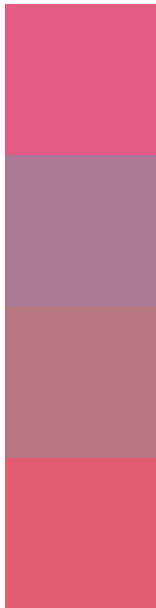
Dichromacy





Tritanopia
14770536

Trichromacy



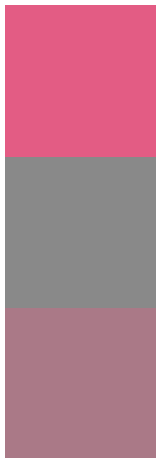
Original Color
14900356

Protanomaly
11106709

Deuteranomaly
11958144

Tritanomaly
14835570

Monochromacy



Original Color
14900356

Achromatopsia
9013641

Achromatomaly
11172231

CSS Examples

Text

The CSS property to change the color of the text to Decimal 14900356 is called "color". The color property can be set on classes, ids or directly on the HTML element.

This example shows how text in the color #E35C84 looks like.

```
.text, #text, p{  
    color:#E35C84  
}
```

If you want to add a text shadow in that color use the text-shadow property, you can generate a text shadow directly with our [CSS Text Shadow Generator](#).

Here you see how black text with a 4 pixel #E35C84 colored shadow looks like.

```
.shadow{ text-shadow: 4px 4px 2px #E35C84
}
```

Border

The CSS property to change the border of an element to Decimal 14900356 is called "border". The border property can be set on classes, ids or directly on the HTML element.

This example shows the color as border, it can be applied via the CSS property "border" or "border-color".

```
.border, #border, table{ border:4px solid
#E35C84 }
```

If only the border color should be changed use the property `border-color`.

```
.border{ border-color:#E35C84 }
```

If you want to add a box shadow in that color use:

Here you see how a box with a 4 pixel #E35C84 colored shadow looks like.

```
.boxshadow{ -moz-box-shadow:4px 4px 4px  
4px #E35C84; -webkit-box-shadow:4px 4px  
4px 4px #E35C84; box-shadow:4px 4px 4px  
4px #E35C84 }
```

Background

The CSS property to change the background color of an element to Decimal 14900356 is called "background". The background property can be set on classes, ids or directly on the HTML element.

```
.background, #background, body{  
background:#E35C84 }
```

If only the background color should be changed can be used:

```
.background{ background-color:#E35C84 }
```

This example shows the color as background, it is applied via the CSS property "background".

To optimize and compress your CSS code, you can use our [online CSS compressor and optimizer](#) based on csstidy. If you want to create a linear or radial gradient as background or border, check our [CSS Gradient Generator](#).

Hey! You found this booklet interesting? Support Converting Colors with the new Membership Option!

The pro membership hides all ads, plus gives you double the colors in the color bucket, and more awesome pro features!

[Learn more, Memberships starting at \\$2.50/m!](#)

**Follow me
on Twitter!**

@ConvertingColor