

# Converting Colors

Decimal(14901383)

Have a look what the booklet for  
Decimal(14901383) contains.

<b>Decimal(14901383)</b> .....	3
<i><b>Conversions</b></i> .....	4
<i><b>Details</b></i> .....	6
<i><b>Harmonies</b></i> .....	11
<i><b>Previews</b></i> .....	23
<i><b>Color Blindness Simulation</b></i> .....	26
<i><b>CSS Examples</b></i> .....	29

# **Color**

**Decimal(14901383)**

# Conversions

## Conversions Part 1

<b>Format</b>	<b>Color</b>
Hex	E36087
RGB	227, 96, 135
RGB Percent	89%, 38%, 53%
CMY	0.1098, 0.6235, 0.4706
CMYK	0.00, 0.58, 0.41, 0.11
HSL	342°, 70%, 63%
HSV	342°, 58%, 89%
XYZ	40.2346, 26.4459, 25.9056
YIQ	139.6150, 65.5570, 39.9010

# Conversions

## Conversions Part 2

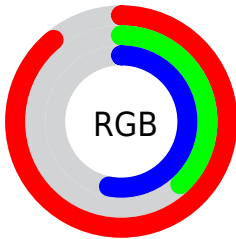
<b>Format</b>	<b>Color</b>
<b>R<sub>YB</sub></b>	227, 96, 135
Decimal	14901383
CIE <sub>Lab</sub>	58.46, 54.49, 4.45
CIE <sub>LCh</sub>	58, 54.667, 4.665
Yxy	26.4459, 0.4346, 0.2856
Android (android.graphics.Color)	4293091463 (0xFFE36087)
YUV	139.6150, -2.2752, 76.6366
Hunter-Lab	51.4256, 49.6609, 6.1306

# Details

The Decimal color **14901383** is a light color, and the websafe version is hex **FF6699**. A complement of this color would be **6349756**, and the grayscale version is **9211020**.

A 20% lighter version of the original color is **16750524**, and **10954582** is the 20% darker color. If you saturate the color by 10%, you get **14895479**, and if you desaturate by 10%, it is **14907287**.

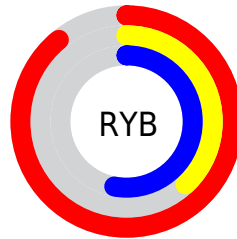
# Distribution



Red (89%)

Green (38%)

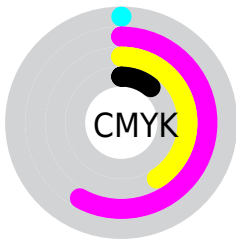
Blue (53%)



Red (89%)

Yellow (38%)

Blue (53%)

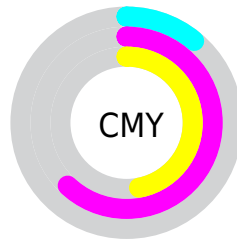


Cyan (0%)

Magenta (58%)

Yellow (41%)

Black (11%)



Cyan (11%)

Magenta (62%)

Yellow (47%)

# Brightness & Saturation Gradients

These gradients show how the Decimal color 14901383 changes by changing the brightness by 10 percent. The first figure shows a shift by +10% for each color and the second figure -10%.

Similar to the brightness gradients but the following saturation gradients show a change of the Decimal color 14901383 by changing the saturation by 10% instead.



 14901383

 14901383

16777215

 12928110

 16750524

 10954582

 16757720

 9044031

 16765172

 7209001

 16772607

 5308437

 3670018

 786432

 0

 14901383

 14901383

14895479

14907287

14889831

14912935

14883927

14918839

14878023

14924743

14876740

14930647

14936295

14942199

14942207

# Harmonies

## Analogous

The Analogous color harmony consists of three colors that are next to each other on the color wheel.



13461942



14901383



14641497

# Triad

The Triadic color harmony groups three colors that are evenly spaced from another and form a triangle on the color wheel.



14901383



7182648



40163

# Complementary

The Complementary color scheme is a pair of colors which are on the opposite of each other on the color wheel.



14901383



6349756

# Split Complementary

Split-complementary colors differ from the complementary color scheme. The scheme consists of three colors, the original color and two neighbors of the complement color.



41922



14901383



1483106

# Square

The Square scheme is like the rectangle color scheme, but the four colors are evenly spaced on the color wheel.



14901383



10456356



42131



3051756

# Rectangle

The Rectangle color scheme consists of four colors that form a rectangle on the color wheel.



14901383



13661503



42131



40922



# Sweetspot

The Sweet Spot groups the original color and five complimentary colors.



14901383



16766177



12345571



8414830



0



8421504



# Same Dimension

The Same Dimension uses a secret algorithm to generate beautiful new colors.



14901383



16732035



14908000



7563115



11730997



3342351



# Inverse Universe

The Inverse Universe completely reimagines the original color for something new.



14901383



16732035



6343139



7563115



11730997



3342351



# Previews

## White Background



This preview shows how the Decimal color 14901383 looks on a white background.

## Color Contrast Check

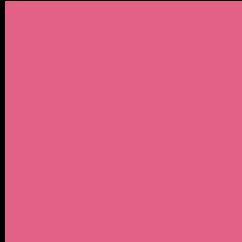
Large Text (above 18pt) WCAG AA ✓ Pass

Any Text WCAG AA × Fail

Large Text (above 18pt) WCAG AAA × Fail

Any Text WCAG AAA × Fail

# Black Background



This preview shows how the Decimal color 14901383 looks on a black background.

## Color Contrast Check

Large Text (above 18pt) WCAG AA ✓ Pass

Any Text WCAG AA ✓ Pass

Large Text (above 18pt) WCAG AAA ✓ Pass

Any Text WCAG AAA × Fail

If you want to check with other color combinations, try the [Color Contrast Checker](#).



## Decimal 14901383 Background



This preview shows how black text looks on a background with the Decimal color 14901383.




This preview shows how white text looks on a background with the Decimal color 14901383.

# Color Blindness Simulation

Color vision deficiency is a very complex topic, and I could not describe the different causes any better than Wikipedia does, so if you want to learn more, you should check out their [article about color blindness](#).

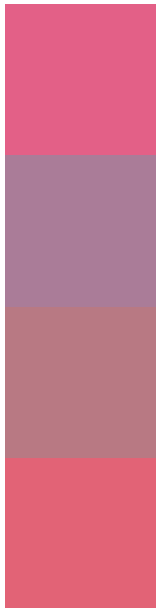
## Dichromacy





**Tritanopia**  
14771564

# Trichromacy



**Original Color**  
14901383

**Protanomaly**  
11173016

**Deuteranomaly**  
12089731

**Tritanomaly**  
14836598

# Monochromacy



**Original Color**  
14901383

**Achromatopsia**  
9211020

**Achromatomaly**  
11304074

# CSS Examples

## Text

The CSS property to change the color of the text to Decimal 14901383 is called "color". The color property can be set on classes, ids or directly on the HTML element.

This example shows how text in the color #E36087 looks like.

```
.text, #text, p{  
    color:#E36087  
}
```

If you want to add a text shadow in that color use the text-shadow property, you can generate a text shadow directly with our [CSS Text Shadow Generator](#).

Here you see how black text with a 4 pixel #E36087 colored shadow looks like.

```
.shadow{ text-shadow: 4px 4px 2px #E36087
}
```

## Border

The CSS property to change the border of an element to Decimal 14901383 is called "border". The border property can be set on classes, ids or directly on the HTML element.

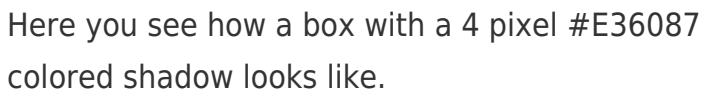
This example shows the color as border, it can be applied via the CSS property "border" or "border-color".

```
.border, #border, table{ border:4px solid
#E36087 }
```

If only the border color should be changed use the property `border-color`.

```
.border{ border-color:#E36087 }
```

If you want to add a box shadow in that color use:



Here you see how a box with a 4 pixel `#E36087` colored shadow looks like.

```
.boxshadow{ -moz-box-shadow:4px 4px 4px  
4px #E36087; -webkit-box-shadow:4px 4px  
4px 4px #E36087; box-shadow:4px 4px 4px  
4px #E36087 }
```

# Background

The CSS property to change the background color of an element to Decimal 14901383 is called "background". The background property can be set on classes, ids or directly on the HTML element.

```
.background, #background, body{  
background:#E36087 }
```

If only the background color should be changed can be used:

```
.background{ background-color:#E36087 }
```

This example shows the color as background, it is applied via the CSS property "background".

To optimize and compress your CSS code, you can use our [online CSS compressor and optimizer](#) based on csstidy. If you want to create a linear or radial gradient as background or border, check our [CSS Gradient Generator](#).



Hey! You found this booklet interesting? Support Converting Colors with the new Membership Option!

The pro membership hides all ads, plus gives you double the colors in the color bucket, and more awesome pro features!

**[Learn more, Memberships starting at \\$2.50/m!](#)**

**Follow me  
on Twitter!**

@ConvertingColor