

Converting Colors

Decimal(14906260)

Have a look what the booklet for
Decimal(14906260) contains.

Decimal(14906260)	3
<i>Conversions</i>	4
<i>Details</i>	6
<i>Harmonies</i>	11
<i>Previews</i>	23
<i>Color Blindness Simulation</i>	26
<i>CSS Examples</i>	29

Color

Decimal(14906260)

Conversions

Conversions Part 1

Format	Color
Hex	E37394
RGB	227, 115, 148
RGB Percent	89%, 45%, 58%
CMY	0.1098, 0.5490, 0.4196
CMYK	0.00, 0.49, 0.35, 0.11
HSL	342°, 67%, 67%
HSV	342°, 49%, 89%
XYZ	43.1546, 30.7305, 31.6741
YIQ	152.2500, 56.1590, 34.0070

Conversions

Conversions Part 2

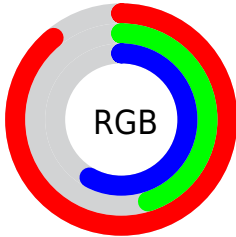
Format	Color
R_{YB}	227, 115, 148
Decimal	14906260
CIE _{Lab}	62.28, 46.88, 2.45
CIE _{LCh}	62, 46.949, 2.986
Yxy	30.7305, 0.4088, 0.2911
Android (android.graphics.Color)	4293096340 (0xFFE37394)
YUV	152.2500, -2.0953, 65.5558
Hunter-Lab	55.4351, 41.9456, 4.9279

Details

The Decimal color **14906260** is a light color, and the websafe version is hex **CC6699**. A complement of this color would be **7594946**, and the grayscale version is **10000536**.

A 20% lighter version of the original color is **16755402**, and **11026018** is the 20% darker color. If you saturate the color by 10%, you get **14900356**, and if you desaturate by 10%, it is **14912164**.

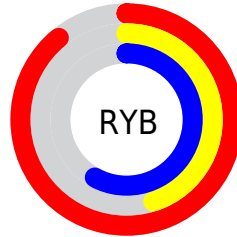
Distribution



Red (89%)

Green (45%)

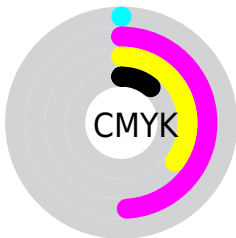
Blue (58%)



Red (89%)

Yellow (45%)

Blue (58%)

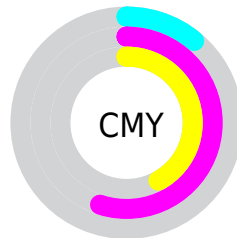


Cyan (0%)

Magenta (49%)

Yellow (35%)

Black (11%)



Cyan (11%)

Magenta (55%)

Yellow (42%)

Brightness & Saturation Gradients

These gradients show how the Decimal color 14906260 changes by changing the brightness by 10 percent. The first figure shows a shift by +10% for each color and the second figure -10%.

Similar to the brightness gradients but the following saturation gradients show a change of the Decimal color 14906260 by changing the saturation by 10% instead.

 14906260

 14906260

16777215

 12933242

 16755402

 11026018

 16762598

 9183818

 16769791

 7340083

 5505055

 3932165

 1769473

 0

 14906260

 14906260

 14900356

 14912164

 14894708

 14917812

 14888804

 14923716

 14882900

 14929620

 14877252

 14935524

 14876739

 14941172

 14942207

Harmonies

Analogous

The Analogous color harmony consists of three colors that are next to each other on the color wheel.



13466301



14906260



14842219

Triad

The Triadic color harmony groups three colors that are evenly spaced from another and form a triangle on the color wheel.



14906260



8429902



42464

Complementary

The Complementary color scheme is a pair of colors which are on the opposite of each other on the color wheel.



14906260



7594946

Split Complementary

Split-complementary colors differ from the complementary color scheme. The scheme consists of three colors, the original color and two neighbors of the complement color.



43971



14906260



4761967

Square

The Square scheme is like the rectangle color scheme, but the four colors are evenly spaced on the color wheel.



14906260



11245120



44186



5479146

Rectangle

The Rectangle color scheme consists of four colors that form a rectangle on the color wheel.



14906260



14058069



44186



42968

Sweetspot

The Sweet Spot groups the original color and five complimentary colors.



14906260



16767460



12678115



8415599



0



8421504

Same Dimension

The Same Dimension uses a secret algorithm to generate beautiful new colors.



14906260



16738709



14911859



7563115



11730997



3342351

Inverse Universe

The Inverse Universe completely reimagines the original color for something new.



14906260



16738709



7589347



7563115



11730997



3342351

Previews

White Background



This preview shows how the Decimal color 14906260 looks on a white background.

Color Contrast Check

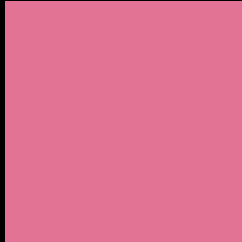
Large Text (above 18pt) WCAG AA × Fail

Any Text WCAG AA × Fail

Large Text (above 18pt) WCAG AAA × Fail

Any Text WCAG AAA × Fail

Black Background



This preview shows how the Decimal color 14906260 looks on a black background.

Color Contrast Check

Large Text (above 18pt) WCAG AA ✓ Pass

Any Text WCAG AA ✓ Pass

Large Text (above 18pt) WCAG AAA ✓ Pass

Any Text WCAG AAA ✓ Pass

If you want to check with other color combinations, try the [Color Contrast Checker](#).

Decimal 14906260 Background



This preview shows how black text looks on a background with the Decimal color 14906260.




This preview shows how white text looks on a background with the Decimal color 14906260.

Color Blindness Simulation

Color vision deficiency is a very complex topic, and I could not describe the different causes any better than Wikipedia does, so if you want to learn more, you should check out their [article about color blindness](#).

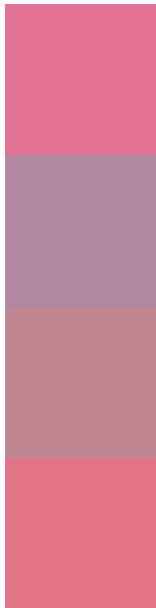
Dichromacy





Tritanopia
14776191

Trichromacy



Original Color
14906260

Protanomaly
11635105

Deuteranomaly
12486545

Tritanomaly
14841479

Monochromacy



Original Color
14906260

Achromatopsia
10000536

Achromatomaly
11766679

CSS Examples

Text

The CSS property to change the color of the text to Decimal 14906260 is called "color". The color property can be set on classes, ids or directly on the HTML element.

This example shows how text in the color #E37394 looks like.

```
.text, #text, p{  
    color:#E37394  
}
```

If you want to add a text shadow in that color use the text-shadow property, you can generate a text shadow directly with our [CSS Text Shadow Generator](#).

Here you see how black text with a 4 pixel #E37394 colored shadow looks like.

```
.shadow{ text-shadow: 4px 4px 2px #E37394
}
```

Border

The CSS property to change the border of an element to Decimal 14906260 is called "border". The border property can be set on classes, ids or directly on the HTML element.

This example shows the color as border, it can be applied via the CSS property "border" or "border-color".

```
.border, #border, table{ border:4px solid
#E37394 }
```

If only the border color should be changed use the property `border-color`.

```
.border{ border-color:#E37394 }
```

If you want to add a box shadow in that color use:

Here you see how a box with a 4 pixel #E37394 colored shadow looks like.

```
.boxshadow{ -moz-box-shadow:4px 4px 4px  
4px #E37394; -webkit-box-shadow:4px 4px  
4px 4px #E37394; box-shadow:4px 4px 4px  
4px #E37394 }
```

Background

The CSS property to change the background color of an element to Decimal 14906260 is called "background". The background property can be set on classes, ids or directly on the HTML element.

```
.background, #background, body{  
background:#E37394 }
```

If only the background color should be changed can be used:

```
.background{ background-color:#E37394 }
```

This example shows the color as background, it is applied via the CSS property "background".

To optimize and compress your CSS code, you can use our [online CSS compressor and optimizer](#) based on csstidy. If you want to create a linear or radial gradient as background or border, check our [CSS Gradient Generator](#).

Hey! You found this booklet interesting? Support Converting Colors with the new Membership Option!

The pro membership hides all ads, plus gives you double the colors in the color bucket, and more awesome pro features!

[Learn more, Memberships starting at \\$2.50/m!](#)

**Follow me
on Twitter!**

@ConvertingColor