

# Converting Colors

Decimal(14907559)

Have a look what the booklet for  
Decimal(14907559) contains.

<b>Decimal(14907559)</b> .....	3
<i><b>Conversions</b></i> .....	4
<i><b>Details</b></i> .....	6
<i><b>Harmonies</b></i> .....	11
<i><b>Previews</b></i> .....	23
<i><b>Color Blindness Simulation</b></i> .....	26
<i><b>CSS Examples</b></i> .....	29

# **Color**

**Decimal(14907559)**

# Conversions

## Conversions Part 1

<b>Format</b>	<b>Color</b>
Hex	E378A7
RGB	227, 120, 167
RGB Percent	89%, 47%, 65%
CMY	0.1098, 0.5294, 0.3451
CMYK	0.00, 0.47, 0.26, 0.11
HSL	334°, 66%, 68%
HSV	334°, 47%, 89%
XYZ	45.3701, 32.5539, 40.4515
YIQ	157.3510, 48.6850, 37.3010

# Conversions

## Conversions Part 2

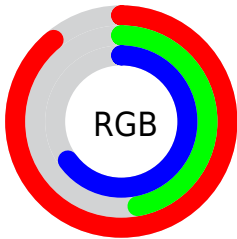
<b>Format</b>	<b>Color</b>
<b>R<sub>YB</sub></b>	227, 120, 167
Decimal	14907559
CIE <sub>Lab</sub>	63.80, 46.81, -6.19
CIE <sub>LCh</sub>	64, 47.214, 352.462
Yxy	32.5539, 0.3833, 0.2750
Android (android.graphics.Color)	4293097639 (0xFFE378A7)
YUV	157.3510, 4.7570, 61.0822
Hunter-Lab	57.0560, 42.0926, -2.0962

# Details

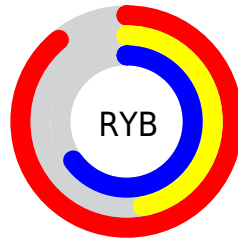
The Decimal color **14907559** is a light color, and the websafe version is hex **CC6699**. A complement of this color would be **7922612**, and the grayscale version is **10329501**.

A 20% lighter version of the original color is **16756702**, and **11092851** is the 20% darker color. If you saturate the color by 10%, you get **14901658**, and if you desaturate by 10%, it is **14913460**.

# Distribution



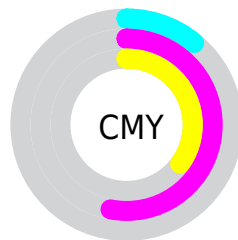
- Red (89%)
- Green (47%)
- Blue (65%)



- Red (89%)
- Yellow (47%)
- Blue (65%)



- Cyan (0%)
- Magenta (47%)
- Yellow (26%)
- Black (11%)



- Cyan (11%)
- Magenta (53%)
- Yellow (35%)

# Brightness & Saturation Gradients

These gradients show how the Decimal color 14907559 changes by changing the brightness by 10 percent. The first figure shows a shift by +10% for each color and the second figure -10%.

Similar to the brightness gradients but the following saturation gradients show a change of the Decimal color 14907559 by changing the saturation by 10% instead.



 14907559

 14907559

16777215

 13000077

 16756702

 11092851

 16763899

 9250907

 16771327

 7406915

 5636141

 3997721

 2228225

 0

 14907559

 14907559

■ 14901658

■ 14913460

■ 14896014

■ 14919104

■ 14890113

■ 14925005

■ 14884212

■ 14930906

■ 14878311

■ 14936551

■ 14876772

■ 14942195

■ 14942207

# Harmonies

## Analogous

The Analogous color harmony consists of three colors that are next to each other on the color wheel.



12878798



14907559



15300989

# Triad

The Triadic color harmony groups three colors that are evenly spaced from another and form a triangle on the color wheel.



14907559



9740874



44252

# Complementary

The Complementary color scheme is a pair of colors which are on the opposite of each other on the color wheel.



14907559



7922612

# Split Complementary

Split-complementary colors differ from the complementary color scheme. The scheme consists of three colors, the original color and two neighbors of the complement color.



45241



14907559



6466405

# Square

The Square scheme is like the rectangle color scheme, but the four colors are evenly spaced on the color wheel.



14907559



12424517



44942



2794222

# Rectangle

The Rectangle color scheme consists of four colors that form a rectangle on the color wheel.



14907559



14844004



44942



44498



# Sweetspot

The Sweet Spot groups the original color and five complimentary colors.



14907559



16767979



11761891



8415859



0



8421504



# Same Dimension

The Same Dimension uses a secret algorithm to generate beautiful new colors.



14907559



16740013



14908792



7563116



11731022



3342358



# Inverse Universe

The Inverse Universe completely reimagines the original color for something new.



14907559



16740013



7921379



7563116



11731022

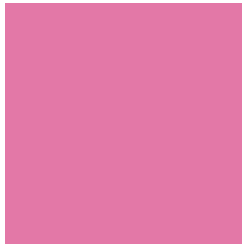


3342358



# Previews

## White Background



This preview shows how the Decimal color 14907559 looks on a white background.

## Color Contrast Check

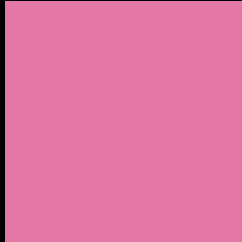
Large Text (above 18pt) WCAG AA × Fail

Any Text WCAG AA × Fail

Large Text (above 18pt) WCAG AAA × Fail

Any Text WCAG AAA × Fail

# Black Background



This preview shows how the Decimal color 14907559 looks on a black background.

## Color Contrast Check

Large Text (above 18pt) WCAG AA ✓ Pass

Any Text WCAG AA ✓ Pass

Large Text (above 18pt) WCAG AAA ✓ Pass

Any Text WCAG AAA ✓ Pass

If you want to check with other color combinations, try the [Color Contrast Checker](#).



## Decimal 14907559 Background



This preview shows how black text looks on a background with the Decimal color 14907559.



This preview shows how white text looks on a background with the Decimal color 14907559.

# Color Blindness Simulation

Color vision deficiency is a very complex topic, and I could not describe the different causes any better than Wikipedia does, so if you want to learn more, you should check out their [article about color blindness](#).

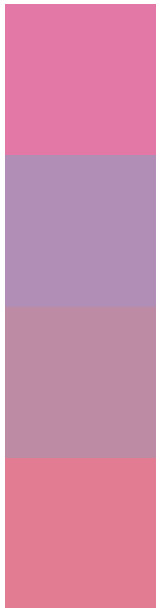
## Dichromacy





**Tritanopia**  
14712455

# Trichromacy



**Original Color**  
14907559

**Protanomaly**  
11570869

**Deuteranomaly**  
12422052

**Tritanomaly**  
14777491

# Monochromacy



**Original Color**  
14907559

**Achromatopsia**  
10329501

**Achromatomaly**  
11964577

# CSS Examples

## Text

The CSS property to change the color of the text to Decimal 14907559 is called "color". The color property can be set on classes, ids or directly on the HTML element.

This example shows how text in the color #E378A7 looks like.

```
.text, #text, p{  
  color:#E378A7  
}
```

If you want to add a text shadow in that color use the text-shadow property, you can generate a text shadow directly with our [CSS Text Shadow Generator](#).

Here you see how black text with a 4 pixel #E378A7 colored shadow looks like.

```
.shadow{ text-shadow: 4px 4px 2px #E378A7
}
```

## Border

The CSS property to change the border of an element to Decimal 14907559 is called "border". The border property can be set on classes, ids or directly on the HTML element.

This example shows the color as border, it can be applied via the CSS property "border" or "border-color".

```
.border, #border, table{ border:4px solid
#E378A7 }
```

If only the border color should be changed use the property border-color.

```
.border{ border-color:#E378A7 }
```

If you want to add a box shadow in that color use:

Here you see how a box with a 4 pixel #E378A7 colored shadow looks like.

```
.boxshadow{ -moz-box-shadow:4px 4px 4px  
4px #E378A7; -webkit-box-shadow:4px 4px  
4px 4px #E378A7; box-shadow:4px 4px 4px  
4px #E378A7 }
```

# Background

The CSS property to change the background color of an element to Decimal 14907559 is called "background". The background property can be set on classes, ids or directly on the HTML element.

```
.background, #background, body{  
background:#E378A7 }
```

If only the background color should be changed can be used:

```
.background{ background-color:#E378A7 }
```

This example shows the color as background, it is applied via the CSS property "background".

To optimize and compress your CSS code, you can use our [online CSS compressor and optimizer](#) based on csstidy. If you want to create a linear or radial gradient as background or border, check our [CSS Gradient Generator](#).



Hey! You found this booklet interesting? Support Converting Colors with the new Membership Option!

The pro membership hides all ads, plus gives you double the colors in the color bucket, and more awesome pro features!

**[Learn more, Memberships starting at \\$2.50/m!](#)**

**Follow me  
on Twitter!**

@ConvertingColor