

Converting Colors

Decimal(14907792)

Have a look what the booklet for
Decimal(14907792) contains.

Decimal(14907792)	3
<i>Conversions</i>	4
<i>Details</i>	6
<i>Harmonies</i>	11
<i>Previews</i>	23
<i>Color Blindness Simulation</i>	26
<i>CSS Examples</i>	29

Color

Decimal(14907792)

Conversions

Conversions Part 1

Format	Color
Hex	E37990
RGB	227, 121, 144
RGB Percent	89%, 47%, 56%
CMY	0.1098, 0.5255, 0.4353
CMYK	0.00, 0.47, 0.37, 0.11
HSL	347°, 65%, 68%
HSV	347°, 47%, 89%
XYZ	43.5500, 32.0193, 30.2706
YIQ	155.3160, 55.7930, 29.6250

Conversions

Conversions Part 2

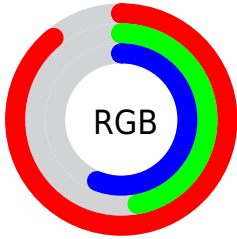
Format	Color
R_{YB}	227, 121, 144
Decimal	14907792
CIE _{Lab}	63.36, 43.40, 6.29
CIE _{LCh}	63, 43.857, 8.251
Yxy	32.0193, 0.4115, 0.3025
Android (android.graphics.Color)	4293097872 (0xFFE37990)
YUV	155.3160, -5.5788, 62.8669
Hunter-Lab	56.5856, 38.3543, 7.8926

Details

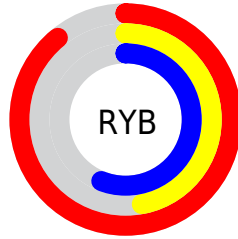
The Decimal color **14907792** is a light color, and the websafe version is hex **CC6666**. A complement of this color would be **7988172**, and the grayscale version is **10197915**.

A 20% lighter version of the original color is **16756678**, and **11093342** is the 20% darker color. If you saturate the color by 10%, you get **14901886**, and if you desaturate by 10%, it is **14913698**.

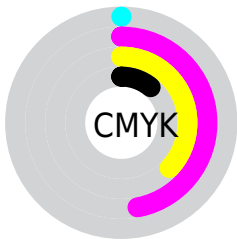
Distribution



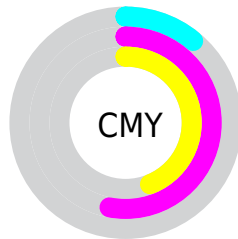
- Red (89%)
- Green (47%)
- Blue (56%)



- Red (89%)
- Yellow (47%)
- Blue (56%)



- Cyan (0%)
- Magenta (47%)
- Yellow (37%)
- Black (11%)



- Cyan (11%)
- Magenta (53%)
- Yellow (44%)

Brightness & Saturation Gradients

These gradients show how the Decimal color 14907792 changes by changing the brightness by 10 percent. The first figure shows a shift by +10% for each color and the second figure -10%.

Similar to the brightness gradients but the following saturation gradients show a change of the Decimal color 14907792 by changing the saturation by 10% instead.

 14907792

 14907792

16777215

 13000566

 16756678

 11093342

 16764130

 9185862

 16771326

 7342896

 5570588

 3932160

 1835009

 0

 14907792

 14907792

 14901886

 14913698

 14896236

 14919348

 14890331

 14925253

 14884425

 14931159

 14878775

 14936809

 14876721

 14942203

 14942207

Harmonies

Analogous

The Analogous color harmony consists of three colors that are next to each other on the color wheel.



13794999



14907792



14581867

Triad

The Triadic color harmony groups three colors that are evenly spaced from another and form a triangle on the color wheel.



14907792



8234330



42465

Complementary

The Complementary color scheme is a pair of colors which are on the opposite of each other on the color wheel.



14907792



7988172

Split Complementary

Split-complementary colors differ from the complementary color scheme. The scheme consists of three colors, the original color and two neighbors of the complement color.



44233



14907792



4696955

Square

The Square scheme is like the rectangle color scheme, but the four colors are evenly spaced on the color wheel.



14907792



10984266



44707



7183078

Rectangle

The Rectangle color scheme consists of four colors that form a rectangle on the color wheel.



14907792



13731928



44707



43227

Sweetspot

The Sweet Spot groups the original color and five complimentary colors.



14907792



16767971



13269475



8415855



0



8421504

Same Dimension

The Same Dimension uses a secret algorithm to generate beautiful new colors.



14907792



16740495



14914937



7563114



11730983



3342347

Inverse Universe

The Inverse Universe completely reimagines the original color for something new.



14907792



16740495



7981027



7563114



11730983



3342347

Previews

White Background



This preview shows how the Decimal color 14907792 looks on a white background.

Color Contrast Check

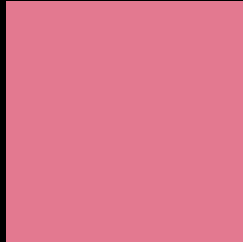
Large Text (above 18pt) WCAG AA × Fail

Any Text WCAG AA × Fail

Large Text (above 18pt) WCAG AAA × Fail

Any Text WCAG AAA × Fail

Black Background



This preview shows how the Decimal color 14907792 looks on a black background.

Color Contrast Check

Large Text (above 18pt) WCAG AA ✓ Pass

Any Text WCAG AA ✓ Pass

Large Text (above 18pt) WCAG AAA ✓ Pass

Any Text WCAG AAA ✓ Pass

If you want to check with other color combinations, try the [Color Contrast Checker](#).

Decimal 14907792 Background



This preview shows how black text looks on a background with the Decimal color 14907792.



This preview shows how white text looks on a background with the Decimal color 14907792.

Color Blindness Simulation

Color vision deficiency is a very complex topic, and I could not describe the different causes any better than Wikipedia does, so if you want to learn more, you should check out their [article about color blindness](#).

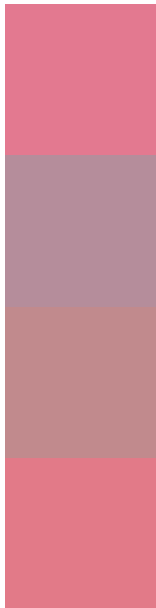
Dichromacy





Tritanopia
14842756

Trichromacy



Original Color
14907792

Protanomaly
11898267

Deuteranomaly
12683917

Tritanomaly
14842504

Monochromacy



Original Color
14907792

Achromatopsia
10197915

Achromatomaly
11898775

CSS Examples

Text

The CSS property to change the color of the text to Decimal 14907792 is called "color". The color property can be set on classes, ids or directly on the HTML element.

This example shows how text in the color #E37990 looks like.

```
.text, #text, p{  
    color:#E37990  
}
```

If you want to add a text shadow in that color use the text-shadow property, you can generate a text shadow directly with our [CSS Text Shadow Generator](#).

Here you see how black text with a 4 pixel #E37990 colored shadow looks like.

```
.shadow{ text-shadow: 4px 4px 2px #E37990
}
```

Border

The CSS property to change the border of an element to Decimal 14907792 is called "border". The border property can be set on classes, ids or directly on the HTML element.

This example shows the color as border, it can be applied via the CSS property "border" or "border-color".

```
.border, #border, table{ border:4px solid
#E37990 }
```

If only the border color should be changed use the property `border-color`.

```
.border{ border-color:#E37990 }
```

If you want to add a box shadow in that color use:

Here you see how a box with a 4 pixel #E37990 colored shadow looks like.

```
.boxshadow{ -moz-box-shadow:4px 4px 4px  
4px #E37990; -webkit-box-shadow:4px 4px  
4px 4px #E37990; box-shadow:4px 4px 4px  
4px #E37990 }
```

Background

The CSS property to change the background color of an element to Decimal 14907792 is called "background". The background property can be set on classes, ids or directly on the HTML element.

```
.background, #background, body{  
background:#E37990 }
```

If only the background color should be changed can be used:

```
.background{ background-color:#E37990 }
```

This example shows the color as background, it is applied via the CSS property "background".

To optimize and compress your CSS code, you can use our [online CSS compressor and optimizer](#) based on csstidy. If you want to create a linear or radial gradient as background or border, check our [CSS Gradient Generator](#).

Hey! You found this booklet interesting? Support Converting Colors with the new Membership Option!

The pro membership hides all ads, plus gives you double the colors in the color bucket, and more awesome pro features!

[Learn more, Memberships starting at \\$2.50/m!](#)

**Follow me
on Twitter!**

@ConvertingColor