

Converting Colors

Decimal(14911645)

Have a look what the booklet for
Decimal(14911645) contains.

Decimal(14911645)	3
<i>Conversions</i>	4
<i>Details</i>	6
<i>Harmonies</i>	11
<i>Previews</i>	23
<i>Color Blindness Simulation</i>	26
<i>CSS Examples</i>	29

Color

Decimal(14911645)

Conversions

Conversions Part 1

Format	Color
Hex	E3889D
RGB	227, 136, 157
RGB Percent	89%, 53%, 62%
CMY	0.1098, 0.4667, 0.3843
CMYK	0.00, 0.40, 0.31, 0.11
HSL	346°, 62%, 71%
HSV	346°, 40%, 89%
XYZ	46.5685, 36.3735, 36.4647
YIQ	165.6030, 47.4950, 25.8230

Conversions

Conversions Part 2

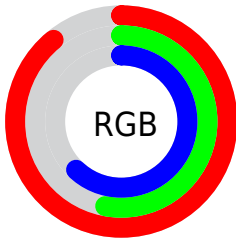
Format	Color
R _Y B	227, 136, 157
Decimal	14911645
CIE Lab	66.80, 37.26, 3.88
CIE LCh	67, 37.460, 5.941
Yxy	36.3735, 0.3900, 0.3046
Android (android.graphics.Color)	4293101725 (0xFFE3889D)
YUV	165.6030, -4.2413, 53.8452
Hunter-Lab	60.3105, 32.2848, 6.3697

Details

The Decimal color **14911645** is a light color, and the websafe version is hex **FF9999**. A complement of this color would be **8971214**, and the grayscale version is **10921638**.

A 20% lighter version of the original color is **16760787**, and **11097194** is the 20% darker color. If you saturate the color by 10%, you get **14905740**, and if you desaturate by 10%, it is **14917550**.

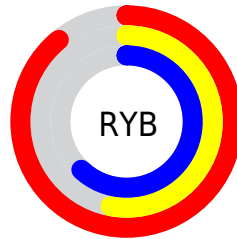
Distribution



Red (89%)

Green (53%)

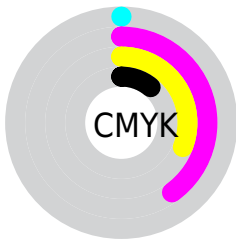
Blue (62%)



Red (89%)

Yellow (53%)

Blue (62%)

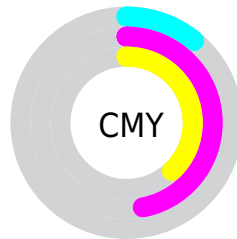


Cyan (0%)

Magenta (40%)

Yellow (31%)

Black (11%)



Cyan (11%)

Magenta (47%)

Yellow (38%)

Brightness & Saturation Gradients

These gradients show how the Decimal color 14911645 changes by changing the brightness by 10 percent. The first figure shows a shift by +10% for each color and the second figure -10%.

Similar to the brightness gradients but the following saturation gradients show a change of the Decimal color 14911645 by changing the saturation by 10% instead.

 14911645

 14911645

16777215

 13004419

 16760787

 11097194

 16767984

 9255762

 16775423

 7479867

 5702693

 3997712

 2424833

 0

 14911645

 14911645

 14905740

 14917550

 14900090

 14923200

 14894185

 14929105

 14888279

 14935011

 14882374

 14940916

 14876724

 14942207

Harmonies

Analogous

The Analogous color harmony consists of three colors that are next to each other on the color wheel.



13798591



14911645



14781821

Triad

The Triadic color harmony groups three colors that are evenly spaced from another and form a triangle on the color wheel.



14911645



9350251



4042207

Complementary

The Complementary color scheme is a pair of colors which are on the opposite of each other on the color wheel.



14911645



8971214

Split Complementary

Split-complementary colors differ from the complementary color scheme. The scheme consists of three colors, the original color and two neighbors of the complement color.



46025



14911645



6599302

Square

The Square scheme is like the rectangle color scheme, but the four colors are evenly spaced on the color wheel.



14911645



11707231



3323304



8168677

Rectangle

The Rectangle color scheme consists of four colors that form a rectangle on the color wheel.



14911645



14062444



3323304



2470105

Sweetspot

The Sweet Spot groups the original color and five complimentary colors.



14911645



16769255



13535459



8416882



0



8421504

Same Dimension

The Same Dimension uses a secret algorithm to generate beautiful new colors.



14911645



16745889



14917768



7563114



11730985



3342348

Inverse Universe

The Inverse Universe completely reimagines the original color for something new.



14911645



16745889



8965091



7563114



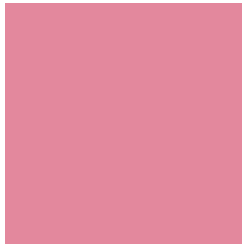
11730985



3342348

Previews

White Background



This preview shows how the Decimal color 14911645 looks on a white background.

Color Contrast Check

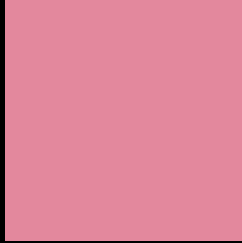
Large Text (above 18pt) WCAG AA × Fail

Any Text WCAG AA × Fail

Large Text (above 18pt) WCAG AAA × Fail

Any Text WCAG AAA × Fail

Black Background



This preview shows how the Decimal color 14911645 looks on a black background.

Color Contrast Check

Large Text (above 18pt) WCAG AA ✓ Pass

Any Text WCAG AA ✓ Pass

Large Text (above 18pt) WCAG AAA ✓ Pass

Any Text WCAG AAA ✓ Pass

If you want to check with other color combinations, try the [Color Contrast Checker](#).

Decimal 14911645 Background



This preview shows how black text looks on a background with the Decimal color 14911645.




This preview shows how white text looks on a background with the Decimal color 14911645.

Color Blindness Simulation

Color vision deficiency is a very complex topic, and I could not describe the different causes any better than Wikipedia does, so if you want to learn more, you should check out their [article about color blindness](#).

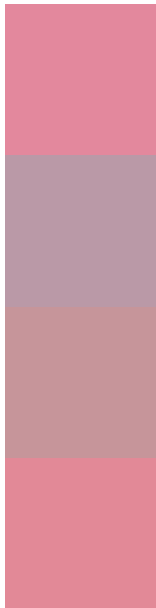
Dichromacy





Tritanopia
14846612

Trichromacy



Original Color
14911645

Protanomaly
12229031

Deuteranomaly
13014426

Tritanomaly
14846359

Monochromacy



Original Color
14911645

Achromatopsia
10921638

Achromatomaly
12360611

CSS Examples

Text

The CSS property to change the color of the text to Decimal 14911645 is called "color". The color property can be set on classes, ids or directly on the HTML element.

This example shows how text in the color #E3889D looks like.

```
.text, #text, p{  
    color:#E3889D  
}
```

If you want to add a text shadow in that color use the text-shadow property, you can generate a text shadow directly with our [CSS Text Shadow Generator](#).

Here you see how black text with a 4 pixel #E3889D colored shadow looks like.

```
.shadow{ text-shadow: 4px 4px 2px #E3889D
}
```

Border

The CSS property to change the border of an element to Decimal 14911645 is called "border". The border property can be set on classes, ids or directly on the HTML element.

This example shows the color as border, it can be applied via the CSS property "border" or "border-color".

```
.border, #border, table{ border:4px solid
#E3889D }
```

If only the border color should be changed use the property `border-color`.

```
.border{ border-color:#E3889D }
```

If you want to add a box shadow in that color use:

Here you see how a box with a 4 pixel #E3889D colored shadow looks like.

```
.boxshadow{ -moz-box-shadow:4px 4px 4px  
4px #E3889D; -webkit-box-shadow:4px 4px  
4px 4px #E3889D; box-shadow:4px 4px 4px  
4px #E3889D }
```

Background

The CSS property to change the background color of an element to Decimal 14911645 is called "background". The background property can be set on classes, ids or directly on the HTML element.

```
.background, #background, body{  
background:#E3889D }
```

If only the background color should be changed can be used:

```
.background{ background-color:#E3889D }
```

This example shows the color as background, it is applied via the CSS property "background".

To optimize and compress your CSS code, you can use our [online CSS compressor and optimizer](#) based on csstidy. If you want to create a linear or radial gradient as background or border, check our [CSS Gradient Generator](#).

Hey! You found this booklet interesting? Support Converting Colors with the new Membership Option!

The pro membership hides all ads, plus gives you double the colors in the color bucket, and more awesome pro features!

[Learn more, Memberships starting at \\$2.50/m!](#)

**Follow me
on Twitter!**

@ConvertingColor