

# Converting Colors

Decimal(14913691)

Have a look what the booklet for  
Decimal(14913691) contains.

<b>Decimal(14913691)</b> .....	3
<i><b>Conversions</b></i> .....	4
<i><b>Details</b></i> .....	6
<i><b>Harmonies</b></i> .....	11
<i><b>Previews</b></i> .....	23
<i><b>Color Blindness Simulation</b></i> .....	26
<i><b>CSS Examples</b></i> .....	29

# **Color**

**Decimal(14913691)**

# Conversions

## Conversions Part 1

<b>Format</b>	<b>Color</b>
Hex	E3909B
RGB	227, 144, 155
RGB Percent	89%, 56%, 61%
CMY	0.1098, 0.4353, 0.3922
CMYK	0.00, 0.37, 0.32, 0.11
HSL	352°, 60%, 73%
HSV	352°, 37%, 89%
XYZ	47.5682, 38.6440, 35.9623
YIQ	170.0710, 45.9370, 21.0170

# Conversions

## Conversions Part 2

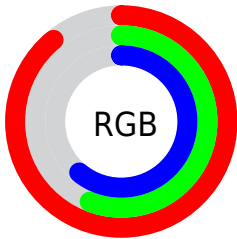
<b>Format</b>	<b>Color</b>
<b>R<sub>YB</sub></b>	227, 144, 155
Decimal	14913691
CIE <sub>Lab</sub>	68.49, 32.78, 7.43
CIE <sub>LCh</sub>	68, 33.614, 12.768
Yxy	38.6440, 0.3893, 0.3163
Android (android.graphics.Color)	4293103771 (0xFFE3909B)
YUV	170.0710, -7.4300, 49.9267
Hunter-Lab	62.1643, 27.8010, 9.2155

# Details

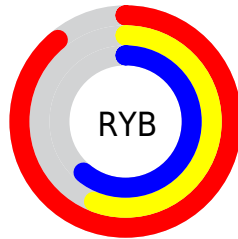
The Decimal color **14913691** is a light color, and the websafe version is hex **FF9999**. A complement of this color would be **9495512**, and the grayscale version is **11184810**.

A 20% lighter version of the original color is **16762833**, and **11164776** is the 20% darker color. If you saturate the color by 10%, you get **14907783**, and if you desaturate by 10%, it is **14919599**.

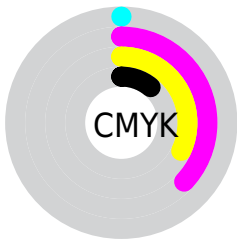
# Distribution



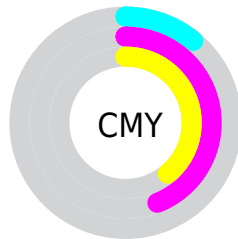
- Red (89%)
- Green (56%)
- Blue (61%)



- Red (89%)
- Yellow (56%)
- Blue (61%)



- Cyan (0%)
- Magenta (37%)
- Yellow (32%)
- Black (11%)



- Cyan (11%)
- Magenta (44%)
- Yellow (39%)

# Brightness & Saturation Gradients

These gradients show how the Decimal color 14913691 changes by changing the brightness by 10 percent. The first figure shows a shift by +10% for each color and the second figure -10%.

Similar to the brightness gradients but the following saturation gradients show a change of the Decimal color 14913691 by changing the saturation by 10% instead.




 14913691

 14913691

16777215

 13006465

 16762833

 11164776

 16770030

 9323344

 7482169

 5771812

 4063246

 2621441

 0

 14913691

 14913691

 14907783

 14919599

 14902132

 14925250

 14896224

 14931158

 14890316

 14937066

 14884409

 14942205

 14878757

 14942207

 14876702

# Harmonies

## Analogous

The Analogous color harmony consists of three colors that are next to each other on the color wheel.



14193338



14913691



14587263

# Triad

The Triadic color harmony groups three colors that are evenly spaced from another and form a triangle on the color wheel.



14913691



9286009



6402016

# Complementary

The Complementary color scheme is a pair of colors which are on the opposite of each other on the color wheel.



14913691



9495512

# Split Complementary

Split-complementary colors differ from the complementary color scheme. The scheme consists of three colors, the original color and two neighbors of the complement color.



3978703



14913691



6862484

# Square

The Square scheme is like the rectangle color scheme, but the four colors are evenly spaced on the color wheel.



14913691



11512171



4569267



9545442

# Rectangle

The Rectangle color scheme consists of four colors that form a rectangle on the color wheel.



14913691



13868146



4569267



5419740



# Sweetspot

The Sweet Spot groups the original color and five complimentary colors.



14913691



16770023



14192867



8417137



0



8421504



# Same Dimension

The Same Dimension uses a secret algorithm to generate beautiful new colors.



14913691



16748446



14921360



7563113



11730968



3342343



# Inverse Universe

The Inverse Universe completely reimagines the original color for something new.



14913691



16748446



9487843



7563113



11730968



3342343



# Previews

## White Background



This preview shows how the Decimal color 14913691 looks on a white background.

## Color Contrast Check

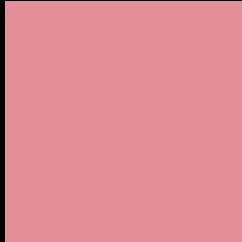
Large Text (above 18pt) WCAG AA × Fail

Any Text WCAG AA × Fail

Large Text (above 18pt) WCAG AAA × Fail

Any Text WCAG AAA × Fail

# Black Background



This preview shows how the Decimal color 14913691 looks on a black background.

## Color Contrast Check

Large Text (above 18pt) WCAG AA ✓ Pass

Any Text WCAG AA ✓ Pass

Large Text (above 18pt) WCAG AAA ✓ Pass

Any Text WCAG AAA ✓ Pass

If you want to check with other color combinations, try the [Color Contrast Checker](#).



## Decimal 14913691 Background



This preview shows how black text looks on a background with the Decimal color 14913691.



This preview shows how white text looks on a background with the Decimal color 14913691.

# Color Blindness Simulation

Color vision deficiency is a very complex topic, and I could not describe the different causes any better than Wikipedia does, so if you want to learn more, you should check out their [article about color blindness](#).

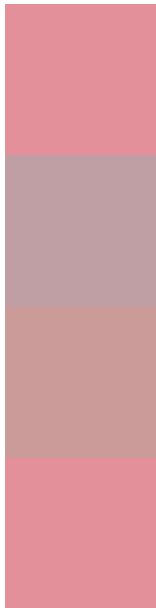
## Dichromacy





**Tritanopia**  
14913691

# Trichromacy



**Original Color**  
14913691

**Protanomaly**  
12558243

**Deuteranomaly**  
13343641

**Tritanomaly**  
14913691

# Monochromacy



**Original Color**  
14913691

**Achromatopsia**  
11184810

**Achromatomaly**  
12558757

# CSS Examples

## Text

The CSS property to change the color of the text to Decimal 14913691 is called "color". The color property can be set on classes, ids or directly on the HTML element.

This example shows how text in the color #E3909B looks like.

```
.text, #text, p{  
  color:#E3909B  
}
```

If you want to add a text shadow in that color use the text-shadow property, you can generate a text shadow directly with our [CSS Text Shadow Generator](#).

Here you see how black text with a 4 pixel #E3909B colored shadow looks like.

```
.shadow{ text-shadow: 4px 4px 2px #E3909B
}
```

## Border

The CSS property to change the border of an element to Decimal 14913691 is called "border". The border property can be set on classes, ids or directly on the HTML element.

This example shows the color as border, it can be applied via the CSS property "border" or "border-color".

```
.border, #border, table{ border:4px solid
#E3909B }
```

If only the border color should be changed use the property border-color.

```
.border{ border-color:#E3909B }
```

If you want to add a box shadow in that color use:

Here you see how a box with a 4 pixel #E3909B colored shadow looks like.

```
.boxshadow{ -moz-box-shadow:4px 4px 4px  
4px #E3909B; -webkit-box-shadow:4px 4px  
4px 4px #E3909B; box-shadow:4px 4px 4px  
4px #E3909B }
```

# Background

The CSS property to change the background color of an element to Decimal 14913691 is called "background". The background property can be set on classes, ids or directly on the HTML element.

```
.background, #background, body{  
background:#E3909B }
```

If only the background color should be changed can be used:

```
.background{ background-color:#E3909B }
```

This example shows the color as background, it is applied via the CSS property "background".

To optimize and compress your CSS code, you can use our [online CSS compressor and optimizer](#) based on csstidy. If you want to create a linear or radial gradient as background or border, check our [CSS Gradient Generator](#).



Hey! You found this booklet interesting? Support Converting Colors with the new Membership Option!

The pro membership hides all ads, plus gives you double the colors in the color bucket, and more awesome pro features!

**[Learn more, Memberships starting at \\$2.50/m!](#)**

**Follow me  
on Twitter!**

@ConvertingColor