

# Converting Colors

Decimal(14913696)

Have a look what the booklet for  
Decimal(14913696) contains.

<b>Decimal(14913696)</b> .....	3
<i><b>Conversions</b></i> .....	4
<i><b>Details</b></i> .....	6
<i><b>Harmonies</b></i> .....	11
<i><b>Previews</b></i> .....	23
<i><b>Color Blindness Simulation</b></i> .....	26
<i><b>CSS Examples</b></i> .....	29

# **Color**

**Decimal(14913696)**

# Conversions

## Conversions Part 1

Format	Color
Hex	E390A0
RGB	227, 144, 160
RGB Percent	89%, 56%, 63%
CMY	0.1098, 0.4353, 0.3725
CMYK	0.00, 0.37, 0.30, 0.11
HSL	348°, 60%, 73%
HSV	348°, 37%, 89%
XYZ	47.9970, 38.8155, 38.2201
YIQ	170.6410, 44.3320, 22.5720

# Conversions

## Conversions Part 2

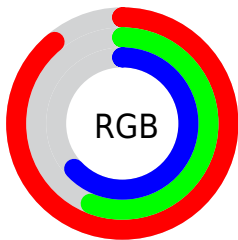
Format	Color
R <sub>Y</sub> B	227, 144, 160
Decimal	14913696
CIE Lab	68.62, 33.43, 4.81
CIE LCh	69, 33.778, 8.186
Yxy	38.8155, 0.3839, 0.3104
Android (android.graphics.Color)	4293103776 (0xFFE390A0)
YUV	170.6410, -5.2460, 49.4268
Hunter-Lab	62.3021, 28.4862, 7.2391

# Details

The Decimal color **14913696** is a light color, and the websafe version is hex **FF9999**. A complement of this color would be **9495507**, and the grayscale version is **11250603**.

A 20% lighter version of the original color is **16762839**, and **11164781** is the 20% darker color. If you saturate the color by 10%, you get **14907790**, and if you desaturate by 10%, it is **14919602**.

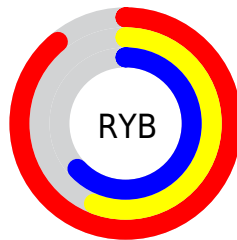
# Distribution



Red (89%)

Green (56%)

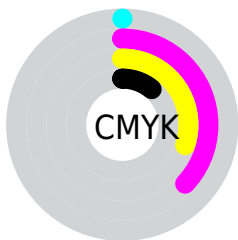
Blue (63%)



Red (89%)

Yellow (56%)

Blue (63%)

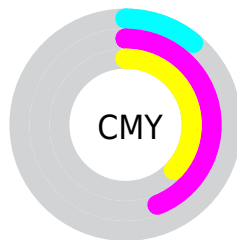


Cyan (0%)

Magenta (37%)

Yellow (30%)

Black (11%)



Cyan (11%)

Magenta (44%)

Yellow (37%)

# Brightness & Saturation Gradients

These gradients show how the Decimal color 14913696 changes by changing the brightness by 10 percent. The first figure shows a shift by +10% for each color and the second figure -10%.

Similar to the brightness gradients but the following saturation gradients show a change of the Decimal color 14913696 by changing the saturation by 10% instead.




 14913696

 14913696

16777215

 13006470

 16762839

 11164781

 16770035

 9323348

 7547709

 5771816

 4063251

 2686977

 0

 14913696

 14913696

 14907790

 14919602

 14902139

 14925253

 14896233

 14931159

 14890327

 14937065

 14884420

 14942204

 14878770

 14942207

 14876716

# Harmonies

## Analogous

The Analogous color harmony consists of three colors that are next to each other on the color wheel.



13996991



14913696



14718083

# Triad

The Triadic color harmony groups three colors that are evenly spaced from another and form a triangle on the color wheel.



14913696



9679222



5943775

# Complementary

The Complementary color scheme is a pair of colors which are on the opposite of each other on the color wheel.



14913696



9495507

# Split Complementary

Split-complementary colors differ from the complementary color scheme. The scheme consists of three colors, the original color and two neighbors of the complement color.



3782348



14913696



7255696

# Square

The Square scheme is like the rectangle color scheme, but the four colors are evenly spaced on the color wheel.



14913696



11839594



4831407



9086947

# Rectangle

The Rectangle color scheme consists of four colors that form a rectangle on the color wheel.



14913696



14064244



4831407



4961242



# Sweetspot

The Sweet Spot groups the original color and five complimentary colors.



14913696



16770024



13799651



8417138



0



8421504



# Same Dimension

The Same Dimension uses a secret algorithm to generate beautiful new colors.



14913696



16748452



14920080



7563113



11730978



3342346



# Inverse Universe

The Inverse Universe completely reimagines the original color for something new.



14913696



16748452



9489123



7563113



11730978

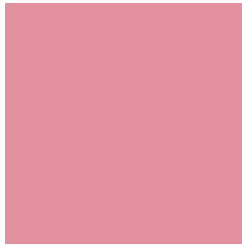


3342346



# Previews

## White Background



This preview shows how the Decimal color 14913696 looks on a white background.

## Color Contrast Check

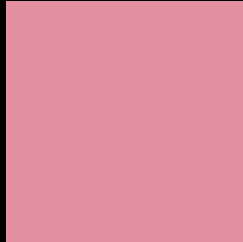
Large Text (above 18pt) WCAG AA × Fail

Any Text WCAG AA × Fail

Large Text (above 18pt) WCAG AAA × Fail

Any Text WCAG AAA × Fail

# Black Background



This preview shows how the Decimal color 14913696 looks on a black background.

## Color Contrast Check

Large Text (above 18pt) WCAG AA ✓ Pass

Any Text WCAG AA ✓ Pass

Large Text (above 18pt) WCAG AAA ✓ Pass

Any Text WCAG AAA ✓ Pass

If you want to check with other color combinations, try the [Color Contrast Checker](#).



## Decimal 14913696 Background



This preview shows how black text looks on a background with the Decimal color 14913696.




This preview shows how white text looks on a background with the Decimal color 14913696.

# Color Blindness Simulation

Color vision deficiency is a very complex topic, and I could not describe the different causes any better than Wikipedia does, so if you want to learn more, you should check out their [article about color blindness](#).

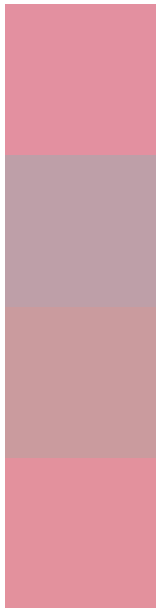
## Dichromacy





**Tritanopia**  
14913948

# Trichromacy



**Original Color**  
14913696

**Protanomaly**  
12492712

**Deuteranomaly**  
13278110

**Tritanomaly**  
14913949

# Monochromacy



**Original Color**  
14913696

**Achromatopsia**  
11250603

**Achromatomaly**  
12558759

# CSS Examples

## Text

The CSS property to change the color of the text to Decimal 14913696 is called "color". The color property can be set on classes, ids or directly on the HTML element.

This example shows how text in the color #E390A0 looks like.

```
.text, #text, p{  
  color:#E390A0  
}
```

If you want to add a text shadow in that color use the text-shadow property, you can generate a text shadow directly with our [CSS Text Shadow Generator](#).

Here you see how black text with a 4 pixel #E390A0 colored shadow looks like.

```
.shadow{ text-shadow: 4px 4px 2px #E390A0
}
```

## Border

The CSS property to change the border of an element to Decimal 14913696 is called "border". The border property can be set on classes, ids or directly on the HTML element.

This example shows the color as border, it can be applied via the CSS property "border" or "border-color".

```
.border, #border, table{ border:4px solid
#E390A0 }
```

If only the border color should be changed use the property `border-color`.

```
.border{ border-color:#E390A0 }
```

If you want to add a box shadow in that color use:

Here you see how a box with a 4 pixel #E390A0 colored shadow looks like.

```
.boxshadow{ -moz-box-shadow:4px 4px 4px  
4px #E390A0; -webkit-box-shadow:4px 4px  
4px 4px #E390A0; box-shadow:4px 4px 4px  
4px #E390A0 }
```

# Background

The CSS property to change the background color of an element to Decimal 14913696 is called "background". The background property can be set on classes, ids or directly on the HTML element.

```
.background, #background, body{  
background:#E390A0 }
```

If only the background color should be changed can be used:

```
.background{ background-color:#E390A0 }
```

This example shows the color as background, it is applied via the CSS property "background".

To optimize and compress your CSS code, you can use our [online CSS compressor and optimizer](#) based on csstidy. If you want to create a linear or radial gradient as background or border, check our [CSS Gradient Generator](#).



Hey! You found this booklet interesting? Support Converting Colors with the new Membership Option!

The pro membership hides all ads, plus gives you double the colors in the color bucket, and more awesome pro features!

**[Learn more, Memberships starting at \\$2.50/m!](#)**

**Follow me  
on Twitter!**

@ConvertingColor