

# Converting Colors

Decimal(14915236)

Have a look what the booklet for  
Decimal(14915236) contains.

<b>Decimal(14915236)</b> .....	3
<i><b>Conversions</b></i> .....	4
<i><b>Details</b></i> .....	6
<i><b>Harmonies</b></i> .....	11
<i><b>Previews</b></i> .....	23
<i><b>Color Blindness Simulation</b></i> .....	26
<i><b>CSS Examples</b></i> .....	29

# **Color**

**Decimal(14915236)**

# Conversions

## Conversions Part 1

Format	Color
Hex	E396A4
RGB	227, 150, 164
RGB Percent	89%, 59%, 64%
CMY	0.1098, 0.4118, 0.3569
CMYK	0.00, 0.34, 0.28, 0.11
HSL	349°, 58%, 74%
HSV	349°, 34%, 89%
XYZ	49.2857, 40.8239, 40.4041
YIQ	174.6190, 41.3980, 20.6780

# Conversions

## Conversions Part 2

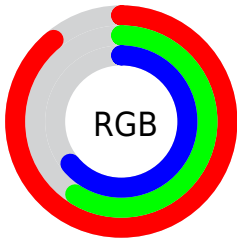
Format	Color
<a href="#">RYB</a>	<a href="#">227, 150, 164</a>
Decimal	<a href="#">14915236</a>
CIELab	<a href="#">70.05, 30.78, 4.65</a>
CIELCh	<a href="#">70, 31.129, 8.583</a>
Yxy	<a href="#">40.8239, 0.3776, 0.3128</a>
Android (android.graphics.Color)	<a href="#">4293105316</a> ( <a href="#">0xFFE396A4</a> )
YUV	<a href="#">174.6190, -5.2352, 45.9381</a>
Hunter-Lab	<a href="#">63.8936, 25.8761, 7.2326</a>

# Details

The Decimal color **14915236** is a light color, and the websafe version is hex **CC9999**. A complement of this color would be **9888725**, and the grayscale version is **11513775**.

A 20% lighter version of the original color is **16764379**, and **11166320** is the 20% darker color. If you saturate the color by 10%, you get **14909329**, and if you desaturate by 10%, it is **14921143**.

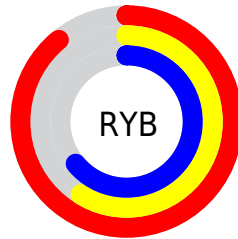
# Distribution



Red (89%)

Green (59%)

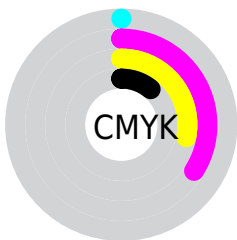
Blue (64%)



Red (89%)

Yellow (59%)

Blue (64%)

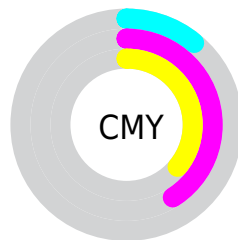


Cyan (0%)

Magenta (34%)

Yellow (28%)

Black (11%)



Cyan (11%)

Magenta (41%)

Yellow (36%)

# Brightness & Saturation Gradients

These gradients show how the Decimal color 14915236 changes by changing the brightness by 10 percent. The first figure shows a shift by +10% for each color and the second figure -10%.

Similar to the brightness gradients but the following saturation gradients show a change of the Decimal color 14915236 by changing the saturation by 10% instead.




 14915236

 14915236

16777215

 13008010

 16764379

 11166320

 16771575

 9324888

 7549249

 5839147

 4128791

 2818049

 0

 14915236

 14915236

 14909329

 14921143

 14903679

 14926793

 14897772

 14932700

 14891866

 14938606

 14886215

 14942207

 14880309

 14876713

# Harmonies

## Analogous

The Analogous color harmony consists of three colors that are next to each other on the color wheel.



14064064



14915236



14719625

# Triad

The Triadic color harmony groups three colors that are evenly spaced from another and form a triangle on the color wheel.



14915236



10007678



6862047

# Complementary

The Complementary color scheme is a pair of colors which are on the opposite of each other on the color wheel.



14915236



9888725

# Split Complementary

Split-complementary colors differ from the complementary color scheme. The scheme consists of three colors, the original color and two neighbors of the complement color.



5224909



14915236



7846294

# Square

The Square scheme is like the rectangle color scheme, but the four colors are evenly spaced on the color wheel.



14915236



12037235



5880755



9612259

# Rectangle

The Rectangle color scheme consists of four colors that form a rectangle on the color wheel.



14915236



14131068



5880755



6141659



# Sweetspot

The Sweet Spot groups the original color and five complimentary colors.



14915236



16770794



13997795



8417395



0



8421504



# Same Dimension

The Same Dimension uses a secret algorithm to generate beautiful new colors.



14915236



16750249



14921366



7563113



11730976



3342345



# Inverse Universe

The Inverse Universe completely reimagines the original color for something new.



14915236



16750249



9882595



7563113



11730976

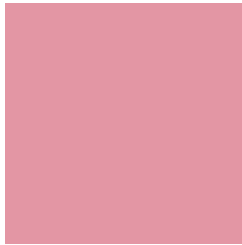


3342345



# Previews

## White Background



This preview shows how the Decimal color 14915236 looks on a white background.

## Color Contrast Check

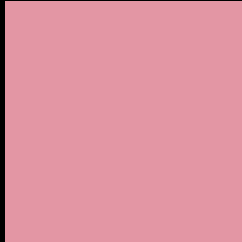
Large Text (above 18pt) WCAG AA × Fail

Any Text WCAG AA × Fail

Large Text (above 18pt) WCAG AAA × Fail

Any Text WCAG AAA × Fail

# Black Background



This preview shows how the Decimal color 14915236 looks on a black background.

## Color Contrast Check

Large Text (above 18pt) WCAG AA ✓ Pass

Any Text WCAG AA ✓ Pass

Large Text (above 18pt) WCAG AAA ✓ Pass

Any Text WCAG AAA ✓ Pass

If you want to check with other color combinations, try the [Color Contrast Checker](#).



## Decimal 14915236 Background



This preview shows how black text looks on a background with the Decimal color 14915236.



This preview shows how white text looks on a background with the Decimal color 14915236.

# Color Blindness Simulation

Color vision deficiency is a very complex topic, and I could not describe the different causes any better than Wikipedia does, so if you want to learn more, you should check out their [article about color blindness](#).


## Dichromacy



**Original Color**  
14915236

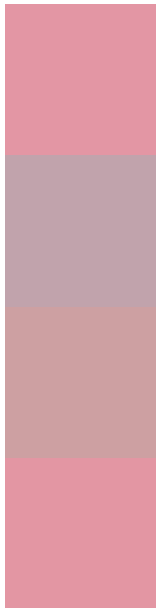
**Protanopia**  
11381680

**Deuteranopia**  
12625569



**Tritanopia**  
14915234

# Trichromacy



**Original Color**  
14915236

**Protanomaly**  
12690348

**Deuteranomaly**  
13476002

**Tritanomaly**  
14915235

# Monochromacy



**Original Color**  
14915236

**Achromatopsia**  
11513775

**Achromatomaly**  
12756651

# CSS Examples

## Text

The CSS property to change the color of the text to Decimal 14915236 is called "color". The color property can be set on classes, ids or directly on the HTML element.

This example shows how text in the color #E396A4 looks like.

```
.text, #text, p{  
  color:#E396A4  
}
```

If you want to add a text shadow in that color use the text-shadow property, you can generate a text shadow directly with our [CSS Text Shadow Generator](#).

Here you see how black text with a 4 pixel #E396A4 colored shadow looks like.

```
.shadow{ text-shadow: 4px 4px 2px #E396A4
}
```

## Border

The CSS property to change the border of an element to Decimal 14915236 is called "border". The border property can be set on classes, ids or directly on the HTML element.

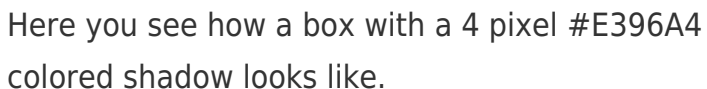
This example shows the color as border, it can be applied via the CSS property "border" or "border-color".

```
.border, #border, table{ border:4px solid
#E396A4 }
```

If only the border color should be changed use the property `border-color`.

```
.border{ border-color:#E396A4 }
```

If you want to add a box shadow in that color use:



Here you see how a box with a 4 pixel `#E396A4` colored shadow looks like.

```
.boxshadow{ -moz-box-shadow:4px 4px 4px  
4px #E396A4; -webkit-box-shadow:4px 4px  
4px 4px #E396A4; box-shadow:4px 4px 4px  
4px #E396A4 }
```

# Background

The CSS property to change the background color of an element to Decimal 14915236 is called "background". The background property can be set on classes, ids or directly on the HTML element.

```
.background, #background, body{  
background:#E396A4 }
```

If only the background color should be changed can be used:

```
.background{ background-color:#E396A4 }
```

This example shows the color as background, it is applied via the CSS property "background".

To optimize and compress your CSS code, you can use our [online CSS compressor and optimizer](#) based on csstidy. If you want to create a linear or radial gradient as background or border, check our [CSS Gradient Generator](#).



Hey! You found this booklet interesting? Support Converting Colors with the new Membership Option!

The pro membership hides all ads, plus gives you double the colors in the color bucket, and more awesome pro features!

**[Learn more, Memberships starting at \\$2.50/m!](#)**

**Follow me  
on Twitter!**

@ConvertingColor