

Converting Colors

Decimal(14918325)

Have a look what the booklet for
Decimal(14918325) contains.

Decimal(14918325)	3
<i>Conversions</i>	4
<i>Details</i>	6
<i>Harmonies</i>	11
<i>Previews</i>	23
<i>Color Blindness Simulation</i>	26
<i>CSS Examples</i>	29

Color

Decimal(14918325)

Conversions

Conversions Part 1

Format	Color
Hex	E3A2B5
RGB	227, 162, 181
RGB Percent	89%, 64%, 71%
CMY	0.1098, 0.3647, 0.2902
CMYK	0.00, 0.29, 0.20, 0.11
HSL	342°, 54%, 76%
HSV	342°, 29%, 89%
XYZ	52.9394, 45.5078, 49.7097
YIQ	183.6010, 32.6410, 19.6890

Conversions

Conversions Part 2

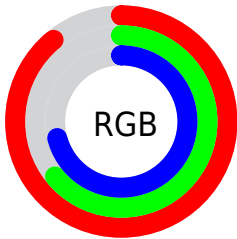
Format	Color
R _Y B	227, 162, 181
Decimal	14918325
CIE Lab	73.22, 26.80, -0.16
CIE LCh	73, 26.797, 359.647
Yxy	45.5078, 0.3573, 0.3072
Android (android.graphics.Color)	4293108405 (0xFFE3A2B5)
YUV	183.6010, -1.2823, 38.0609
Hunter-Lab	67.4594, 22.0254, 3.5318

Details

The Decimal color **14918325** is a light color, and the websafe version is hex **CC9999**. A complement of this color would be **10675152**, and the grayscale version is **12105912**.

A 20% lighter version of the original color is **16767469**, and **11234944** is the 20% darker color. If you saturate the color by 10%, you get **14912421**, and if you desaturate by 10%, it is **14924229**.

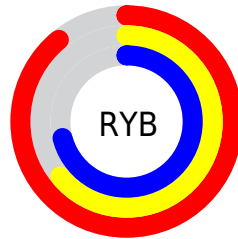
Distribution



Red (89%)

Green (64%)

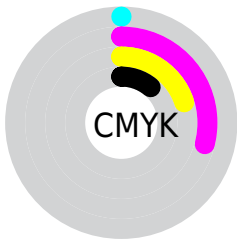
Blue (71%)



Red (89%)

Yellow (64%)

Blue (71%)

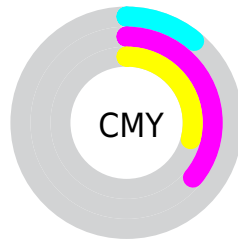


Cyan (0%)

Magenta (29%)

Yellow (20%)

Black (11%)



Cyan (11%)

Magenta (36%)

Yellow (29%)

Brightness & Saturation Gradients

These gradients show how the Decimal color 14918325 changes by changing the brightness by 10 percent. The first figure shows a shift by +10% for each color and the second figure -10%.

Similar to the brightness gradients but the following saturation gradients show a change of the Decimal color 14918325 by changing the saturation by 10% instead.

 14918325

 14918325

16777215

 13010842

 16767469

 11234944

 16774911

 9393511

 7683407

 5973304

 4328995

 2883597

 0

 14918325

 14918325

 14912421

 14924229

 14906773

 14929877

 14900869

 14935781

 14894965

 14941685

 14889317

 14942207

 14883413

 14877509

 14876738

Harmonies

Analogous

The Analogous color harmony consists of three colors that are next to each other on the color wheel.



13870797



14918325



15049885

Triad

The Triadic color harmony groups three colors that are evenly spaced from another and form a triangle on the color wheel.



14918325



11319945



7847389

Complementary

The Complementary color scheme is a pair of colors which are on the opposite of each other on the color wheel.



14918325



10675152

Split Complementary

Split-complementary colors differ from the complementary color scheme. The scheme consists of three colors, the original color and two neighbors of the complement color.



7061963



14918325



9486234

Square

The Square scheme is like the rectangle color scheme, but the four colors are evenly spaced on the color wheel.



14918325



13021827



7848627



9811684

Rectangle

The Rectangle color scheme consists of four colors that form a rectangle on the color wheel.



14918325



14657423



7848627



7389144

Sweetspot

The Sweet Spot groups the original color and five complimentary colors.



14918325



16771311



13673187



8417654



0



8421504

Same Dimension

The Same Dimension uses a secret algorithm to generate beautiful new colors.



14918325



16754882



14921634



7563115



11730996



3342351

Inverse Universe

The Inverse Universe completely reimagines the original color for something new.



14918325



16754882



10671843



7563115



11730996



3342351

Previews

White Background



This preview shows how the Decimal color 14918325 looks on a white background.

Color Contrast Check

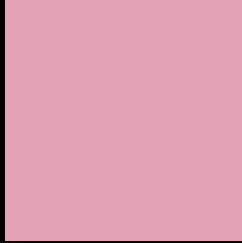
Large Text (above 18pt) WCAG AA × Fail

Any Text WCAG AA × Fail

Large Text (above 18pt) WCAG AAA × Fail

Any Text WCAG AAA × Fail

Black Background



This preview shows how the Decimal color 14918325 looks on a black background.

Color Contrast Check

Large Text (above 18pt) WCAG AA ✓ Pass

Any Text WCAG AA ✓ Pass

Large Text (above 18pt) WCAG AAA ✓ Pass

Any Text WCAG AAA ✓ Pass

If you want to check with other color combinations, try the [Color Contrast Checker](#).

Decimal 14918325 Background



This preview shows how black text looks on a background with the Decimal color 14918325.



This preview shows how white text looks on a background with the Decimal color 14918325.

Color Blindness Simulation

Color vision deficiency is a very complex topic, and I could not describe the different causes any better than Wikipedia does, so if you want to learn more, you should check out their [article about color blindness](#).

Dichromacy



Original Color
14918325

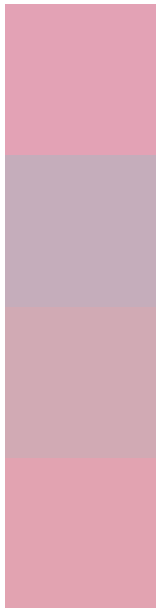
Protanopia
11842495

Deuteranopia
13020851



Tritanopia
14853039

Trichromacy



Original Color
14918325

Protanomaly
12955067

Deuteranomaly
13740724

Tritanomaly
14853041

Monochromacy



Original Color
14918325

Achromatopsia
12105912

Achromatomaly
13152439

CSS Examples

Text

The CSS property to change the color of the text to Decimal 14918325 is called "color". The color property can be set on classes, ids or directly on the HTML element.

This example shows how text in the color #E3A2B5 looks like.

```
.text, #text, p{  
    color:#E3A2B5  
}
```

If you want to add a text shadow in that color use the text-shadow property, you can generate a text shadow directly with our [CSS Text Shadow Generator](#).

Here you see how black text with a 4 pixel #E3A2B5 colored shadow looks like.

```
.shadow{ text-shadow: 4px 4px 2px #E3A2B5
}
```

Border

The CSS property to change the border of an element to Decimal 14918325 is called "border". The border property can be set on classes, ids or directly on the HTML element.

This example shows the color as border, it can be applied via the CSS property "border" or "border-color".

```
.border, #border, table{ border:4px solid
#E3A2B5 }
```

If only the border color should be changed use the property `border-color`.

```
.border{ border-color:#E3A2B5 }
```

If you want to add a box shadow in that color use:

Here you see how a box with a 4 pixel #E3A2B5 colored shadow looks like.

```
.boxshadow{ -moz-box-shadow:4px 4px 4px  
4px #E3A2B5; -webkit-box-shadow:4px 4px  
4px 4px #E3A2B5; box-shadow:4px 4px 4px  
4px #E3A2B5 }
```

Background

The CSS property to change the background color of an element to Decimal 14918325 is called "background". The background property can be set on classes, ids or directly on the HTML element.

```
.background, #background, body{  
background:#E3A2B5 }
```

If only the background color should be changed can be used:

```
.background{ background-color:#E3A2B5 }
```

This example shows the color as background, it is applied via the CSS property "background".

To optimize and compress your CSS code, you can use our [online CSS compressor and optimizer](#) based on csstidy. If you want to create a linear or radial gradient as background or border, check our [CSS Gradient Generator](#).

Hey! You found this booklet interesting? Support Converting Colors with the new Membership Option!

The pro membership hides all ads, plus gives you double the colors in the color bucket, and more awesome pro features!

[Learn more, Memberships starting at \\$2.50/m!](#)

**Follow me
on Twitter!**

@ConvertingColor