

# Converting Colors

Decimal(14918840)

Have a look what the booklet for  
Decimal(14918840) contains.

<b>Decimal(14918840)</b> .....	3
<i><b>Conversions</b></i> .....	4
<i><b>Details</b></i> .....	6
<i><b>Harmonies</b></i> .....	11
<i><b>Previews</b></i> .....	23
<i><b>Color Blindness Simulation</b></i> .....	26
<i><b>CSS Examples</b></i> .....	29

# **Color**

**Decimal(14918840)**

# Conversions

## Conversions Part 1

<b>Format</b>	<b>Color</b>
Hex	E3A4B8
RGB	227, 164, 184
RGB Percent	89%, 64%, 72%
CMY	0.1098, 0.3569, 0.2784
CMYK	0.00, 0.28, 0.19, 0.11
HSL	341°, 53%, 77%
HSV	341°, 28%, 89%
XYZ	53.6057, 46.3425, 51.4671
YIQ	185.1170, 31.1280, 19.5760

# Conversions

## Conversions Part 2

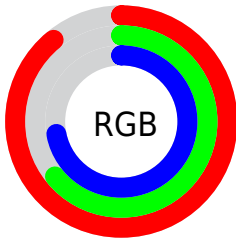
Format	Color
R <sub>Y</sub> B	227, 164, 184
Decimal	14918840
CIE Lab	73.77, 26.18, -1.02
CIE LCh	74, 26.198, 357.760
Yxy	46.3425, 0.3540, 0.3061
Android (android.graphics.Color)	4293108920 (0xFFE3A4B8)
YUV	185.1170, -0.5507, 36.7314
Hunter-Lab	68.0753, 21.4275, 2.8276

# Details

The Decimal color **14918840** is a light color, and the websafe version is hex **CC9999**. A complement of this color would be **10806223**, and the grayscale version is **12171705**.

A 20% lighter version of the original color is **16767984**, and **11235459** is the 20% darker color. If you saturate the color by 10%, you get **14912937**, and if you desaturate by 10%, it is **14924743**.

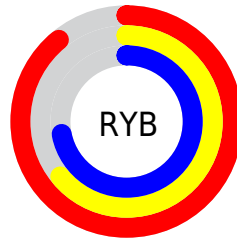
# Distribution



Red (89%)

Green (64%)

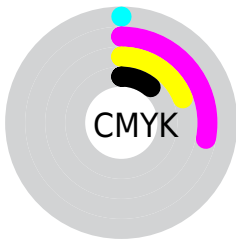
Blue (72%)



Red (89%)

Yellow (64%)

Blue (72%)

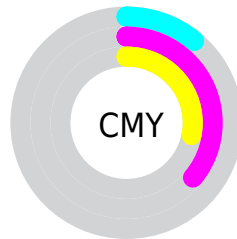


Cyan (0%)

Magenta (28%)

Yellow (19%)

Black (11%)



Cyan (11%)

Magenta (36%)

Yellow (28%)

# Brightness & Saturation Gradients

These gradients show how the Decimal color 14918840 changes by changing the brightness by 10 percent. The first figure shows a shift by +10% for each color and the second figure -10%.

Similar to the brightness gradients but the following saturation gradients show a change of the Decimal color 14918840 by changing the saturation by 10% instead.



 14918840

 14918840

16777215

 13011357

 16767984

 11235459

 16775423

 9394026

 7683922

 5973819

 4329509

 2883600

 0

 14918840

 14918840

 14912937

 14924743

 14907289

 14930391

 14901386

 14936294

 14895482

 14942198

 14889835

 14942207

 14883931

 14878028

 14876744

# Harmonies

## Analogous

The Analogous color harmony consists of three colors that are next to each other on the color wheel.



13871311



14918840



15115680

# Triad

The Triadic color harmony groups three colors that are evenly spaced from another and form a triangle on the color wheel.



14918840



11516810



7978973

# Complementary

The Complementary color scheme is a pair of colors which are on the opposite of each other on the color wheel.



14918840



10806223

# Split Complementary

Split-complementary colors differ from the complementary color scheme. The scheme consists of three colors, the original color and two neighbors of the complement color.



7324363



14918840



9748635

# Square

The Square scheme is like the rectangle color scheme, but the four colors are evenly spaced on the color wheel.



14918840



13218693



8111027



9812197

# Rectangle

The Rectangle color scheme consists of four colors that form a rectangle on the color wheel.



14918840



14789011



8111027



7586008



# Sweetspot

The Sweet Spot groups the original color and five complimentary colors.



14918840



16772081



13542627



8418167



0



8421504



# Same Dimension

The Same Dimension uses a secret algorithm to generate beautiful new colors.



14918840



16755654



14921636



7563115



11731001



3342352



# Inverse Universe

The Inverse Universe completely reimagines the original color for something new.



14918840



16755654



10803427



7563115



11731001

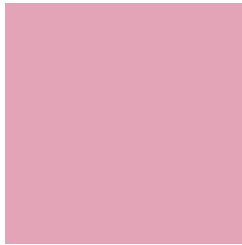


3342352



# Previews

## White Background



This preview shows how the Decimal color 14918840 looks on a white background.

## Color Contrast Check

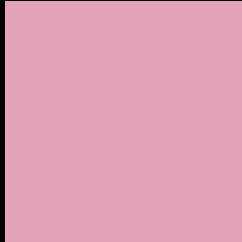
Large Text (above 18pt) WCAG AA × Fail

Any Text WCAG AA × Fail

Large Text (above 18pt) WCAG AAA × Fail

Any Text WCAG AAA × Fail

# Black Background



This preview shows how the Decimal color 14918840 looks on a black background.

## Color Contrast Check

Large Text (above 18pt) WCAG AA ✓ Pass

Any Text WCAG AA ✓ Pass

Large Text (above 18pt) WCAG AAA ✓ Pass

Any Text WCAG AAA ✓ Pass

If you want to check with other color combinations, try the [Color Contrast Checker](#).



## Decimal 14918840 Background



This preview shows how black text looks on a background with the Decimal color 14918840.




This preview shows how white text looks on a background with the Decimal color 14918840.

# Color Blindness Simulation

Color vision deficiency is a very complex topic, and I could not describe the different causes any better than Wikipedia does, so if you want to learn more, you should check out their [article about color blindness](#).

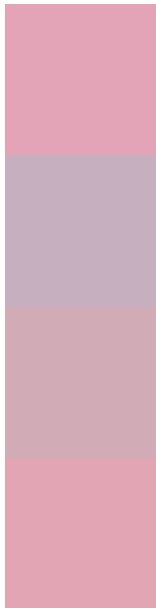
## Dichromacy





**Tritanopia**  
14853554

# Trichromacy



**Original Color**  
14918840

**Protanomaly**  
13021118

**Deuteranomaly**  
13741239

**Tritanomaly**  
14853556

# Monochromacy



**Original Color**  
14918840

**Achromatopsia**  
12171705

**Achromatomaly**  
13152697

# CSS Examples

## Text

The CSS property to change the color of the text to Decimal 14918840 is called "color". The color property can be set on classes, ids or directly on the HTML element.

This example shows how text in the color #E3A4B8 looks like.

```
.text, #text, p{  
  color:#E3A4B8  
}
```

If you want to add a text shadow in that color use the text-shadow property, you can generate a text shadow directly with our [CSS Text Shadow Generator](#).

Here you see how black text with a 4 pixel #E3A4B8 colored shadow looks like.

```
.shadow{ text-shadow: 4px 4px 2px #E3A4B8
}
```

## Border

The CSS property to change the border of an element to Decimal 14918840 is called "border". The border property can be set on classes, ids or directly on the HTML element.

This example shows the color as border, it can be applied via the CSS property "border" or "border-color".

```
.border, #border, table{ border:4px solid
#E3A4B8 }
```

If only the border color should be changed use the property `border-color`.

```
.border{ border-color:#E3A4B8 }
```

If you want to add a box shadow in that color use:

Here you see how a box with a 4 pixel #E3A4B8 colored shadow looks like.

```
.boxshadow{ -moz-box-shadow:4px 4px 4px  
4px #E3A4B8; -webkit-box-shadow:4px 4px  
4px 4px #E3A4B8; box-shadow:4px 4px 4px  
4px #E3A4B8 }
```

# Background

The CSS property to change the background color of an element to Decimal 14918840 is called "background". The background property can be set on classes, ids or directly on the HTML element.

```
.background, #background, body{  
background:#E3A4B8 }
```

If only the background color should be changed can be used:

```
.background{ background-color:#E3A4B8 }
```

This example shows the color as background, it is applied via the CSS property "background".

To optimize and compress your CSS code, you can use our [online CSS compressor and optimizer](#) based on csstidy. If you want to create a linear or radial gradient as background or border, check our [CSS Gradient Generator](#).



Hey! You found this booklet interesting? Support Converting Colors with the new Membership Option!

The pro membership hides all ads, plus gives you double the colors in the color bucket, and more awesome pro features!

**[Learn more, Memberships starting at \\$2.50/m!](#)**

**Follow me  
on Twitter!**

@ConvertingColor