

Converting Colors

Decimal(14921148)

Have a look what the booklet for
Decimal(14921148) contains.

Decimal(14921148)	3
<i>Conversions</i>	4
<i>Details</i>	6
<i>Harmonies</i>	11
<i>Previews</i>	23
<i>Color Blindness Simulation</i>	26
<i>CSS Examples</i>	29

Color

Decimal(14921148)

Conversions

Conversions Part 1

Format	Color
Hex	E3ADBC
RGB	227, 173, 188
RGB Percent	89%, 68%, 74%
CMY	0.1098, 0.3216, 0.2627
CMYK	0.00, 0.24, 0.17, 0.11
HSL	343°, 49%, 78%
HSV	343°, 24%, 89%
XYZ	55.6992, 49.8489, 54.2631
YIQ	190.8560, 27.3690, 16.1130

Conversions

Conversions Part 2

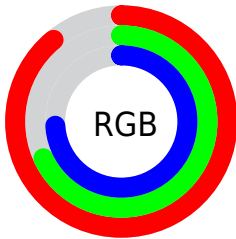
Format	Color
R _Y B	227, 173, 188
Decimal	14921148
CIE Lab	75.98, 21.96, 0.01
CIE LCh	76, 21.965, 0.035
Yxy	49.8489, 0.3485, 0.3119
Android (android.graphics.Color)	4293111228 (0xFFE3ADBC)
YUV	190.8560, -1.4080, 31.6983
Hunter-Lab	70.6037, 17.2620, 3.8548

Details

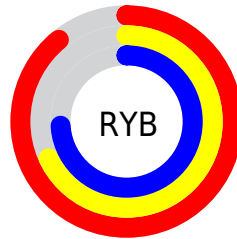
The Decimal color **14921148** is a light color, and the websafe version is hex **CC9999**. A complement of this color would be **11396052**, and the grayscale version is **12566463**.

A 20% lighter version of the original color is **16770548**, and **11237511** is the 20% darker color. If you saturate the color by 10%, you get **14915244**, and if you desaturate by 10%, it is **14927052**.

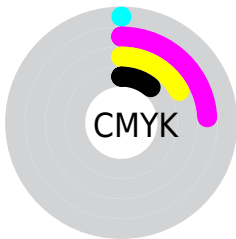
Distribution



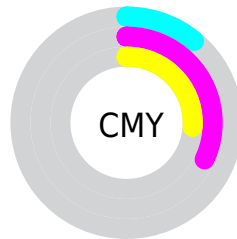
- Red (89%)
- Green (68%)
- Blue (74%)



- Red (89%)
- Yellow (68%)
- Blue (74%)



- Cyan (0%)
- Magenta (24%)
- Yellow (17%)
- Black (11%)



- Cyan (11%)
- Magenta (32%)
- Yellow (26%)

Brightness & Saturation Gradients

These gradients show how the Decimal color 14921148 changes by changing the brightness by 10 percent. The first figure shows a shift by +10% for each color and the second figure -10%.

Similar to the brightness gradients but the following saturation gradients show a change of the Decimal color 14921148 by changing the saturation by 10% instead.

 14921148

 14921148

16777215

 13079201

 16770548

 11237511

 9461614

 7751509

 6041662

 4463144

 2884372

 786432

 0

 14921148

 14921148

 14915244

 14927052

 14909595

 14932701

 14903691

 14938605

 14897786

 14942206

 14892138

 14942207

 14886234

 14880329

 14876735

Harmonies

Analogous

The Analogous color harmony consists of three colors that are next to each other on the color wheel.



14069968



14921148



15052456

Triad

The Triadic color harmony groups three colors that are evenly spaced from another and form a triangle on the color wheel.



14921148



11911320



9290718

Complementary

The Complementary color scheme is a pair of colors which are on the opposite of each other on the color wheel.



14921148



11396052

Split Complementary

Split-complementary colors differ from the complementary color scheme. The scheme consists of three colors, the original color and two neighbors of the complement color.



8636111



14921148



10405286

Square

The Square scheme is like the rectangle color scheme, but the four colors are evenly spaced on the color wheel.



14921148



13351571



9160635



10796515

Rectangle

The Rectangle color scheme consists of four colors that form a rectangle on the color wheel.



14921148



14725533



9160635



8963290

Sweetspot

The Sweet Spot groups the original color and five complimentary colors.



14921148



16772594



13938147



8418680



0



8421504

Same Dimension

The Same Dimension uses a secret algorithm to generate beautiful new colors.



14921148



16758218



14924205



7563114



11730994



3342350

Inverse Universe

The Inverse Universe completely reimagines the original color for something new.



14921148



16758218



11392995



7563114



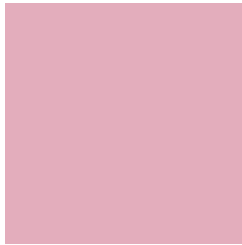
11730994



3342350

Previews

White Background



This preview shows how the Decimal color 14921148 looks on a white background.

Color Contrast Check

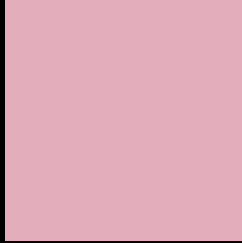
Large Text (above 18pt) WCAG AA × Fail

Any Text WCAG AA × Fail

Large Text (above 18pt) WCAG AAA × Fail

Any Text WCAG AAA × Fail

Black Background



This preview shows how the Decimal color 14921148 looks on a black background.

Color Contrast Check

Large Text (above 18pt) WCAG AA ✓ Pass

Any Text WCAG AA ✓ Pass

Large Text (above 18pt) WCAG AAA ✓ Pass

Any Text WCAG AAA ✓ Pass

If you want to check with other color combinations, try the [Color Contrast Checker](#).

Decimal 14921148 Background



This preview shows how black text looks on a background with the Decimal color 14921148.




This preview shows how white text looks on a background with the Decimal color 14921148.

Color Blindness Simulation

Color vision deficiency is a very complex topic, and I could not describe the different causes any better than Wikipedia does, so if you want to learn more, you should check out their [article about color blindness](#).

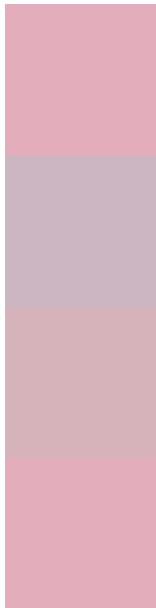
Dichromacy





Tritanopia
14921147

Trichromacy



Original Color
14921148

Protanomaly
13350593

Deuteranomaly
14070715

Tritanomaly
14921147

Monochromacy



Original Color
14921148

Achromatopsia
12566463

Achromatomaly
13416638

CSS Examples

Text

The CSS property to change the color of the text to Decimal 14921148 is called "color". The color property can be set on classes, ids or directly on the HTML element.

This example shows how text in the color #E3ADBC looks like.

```
.text, #text, p{  
  color:#E3ADBC  
}
```

If you want to add a text shadow in that color use the text-shadow property, you can generate a text shadow directly with our [CSS Text Shadow Generator](#).

Here you see how black text with a 4 pixel #E3ADBC colored shadow looks like.

```
.shadow{ text-shadow: 4px 4px 2px #E3ADBC
}
```

Border

The CSS property to change the border of an element to Decimal 14921148 is called "border". The border property can be set on classes, ids or directly on the HTML element.

This example shows the color as border, it can be applied via the CSS property "border" or "border-color".

```
.border, #border, table{ border:4px solid
#E3ADBC }
```

If only the border color should be changed use the property `border-color`.

```
.border{ border-color:#E3ADBC }
```

If you want to add a box shadow in that color use:

Here you see how a box with a 4 pixel #E3ADBC colored shadow looks like.

```
.boxshadow{ -moz-box-shadow:4px 4px 4px  
4px #E3ADBC; -webkit-box-shadow:4px 4px  
4px 4px #E3ADBC; box-shadow:4px 4px 4px  
4px #E3ADBC }
```

Background

The CSS property to change the background color of an element to Decimal 14921148 is called "background". The background property can be set on classes, ids or directly on the HTML element.

```
.background, #background, body{  
background:#E3ADBC }
```

If only the background color should be changed can be used:

```
.background{ background-color:#E3ADBC }
```

This example shows the color as background, it is applied via the CSS property "background".

To optimize and compress your CSS code, you can use our [online CSS compressor and optimizer](#) based on csstidy. If you want to create a linear or radial gradient as background or border, check our [CSS Gradient Generator](#).

Hey! You found this booklet interesting? Support Converting Colors with the new Membership Option!

The pro membership hides all ads, plus gives you double the colors in the color bucket, and more awesome pro features!

[Learn more, Memberships starting at \\$2.50/m!](#)

**Follow me
on Twitter!**

@ConvertingColor