

Converting Colors

Decimal(14923166)

Have a look what the booklet for
Decimal(14923166) contains.

Decimal(14923166)	3
<i>Conversions</i>	4
<i>Details</i>	6
<i>Harmonies</i>	11
<i>Previews</i>	23
<i>Color Blindness Simulation</i>	26
<i>CSS Examples</i>	29

Color

Decimal(14923166)

Conversions

Conversions Part 1

Format	Color
Hex	E3B59E
RGB	227, 181, 158
RGB Percent	89%, 71%, 62%
CMY	0.1098, 0.2902, 0.3804
CMYK	0.00, 0.20, 0.30, 0.11
HSL	20°, 55%, 75%
HSV	20°, 30%, 89%
XYZ	54.3740, 51.8473, 39.4895
YIQ	192.1320, 34.7990, 2.5990

Conversions

Conversions Part 2

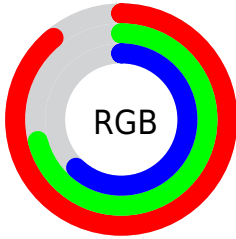
Format	Color
RYB	227, 193, 158
Decimal	14923166
CIELab	77.19, 13.39, 18.04
CIElCh	77, 22.470, 53.419
Yxy	51.8473, 0.3732, 0.3558
Android (android.graphics.Color)	4293113246 (0xFFE3B59E)
YUV	192.1320, -16.8271, 30.5792
Hunter-Lab	72.0050, 8.7839, 17.8873

Details

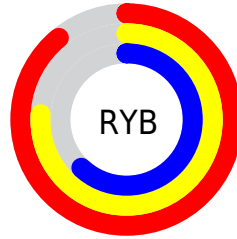
The Decimal color **14923166** is a light color, and the websafe version is hex **CC9999**. A complement of this color would be **10407139**, and the grayscale version is **12632256**.

A 20% lighter version of the original color is **16772565**, and **11173995** is the 20% darker color. If you saturate the color by 10%, you get **14919303**, and if you desaturate by 10%, it is **14927029**.

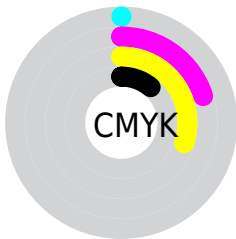
Distribution



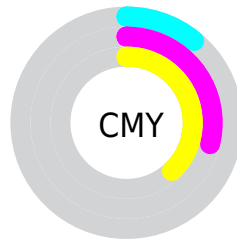
- Red (89%)
- Green (71%)
- Blue (62%)



- Red (89%)
- Yellow (76%)
- Blue (62%)



- Cyan (0%)
- Magenta (20%)
- Yellow (30%)
- Black (11%)



- Cyan (11%)
- Magenta (29%)
- Yellow (38%)

Brightness & Saturation Gradients

These gradients show how the Decimal color 14923166 changes by changing the brightness by 10 percent. The first figure shows a shift by +10% for each color and the second figure -10%.

Similar to the brightness gradients but the following saturation gradients show a change of the Decimal color 14923166 by changing the saturation by 10% instead.

 14923166	 14923166
 16777215	 13015684
 16772565	 11173995
 16777201	 9398098
 16777201	 7687995
 16777201	 5978149
 16777201	 4334097
 16777201	 2755840
 16777201	 196608
 16777201	 0

 14923166

 14923166

 14919303

 14927029

 14915441

 14930891

 14911578

 14934754

 14907459

 14938873

 14903597

 14942207

 14899734

 14896128

Harmonies

Analogous

The Analogous color harmony consists of three colors that are next to each other on the color wheel.



15380911



14923166



13876374

Triad

The Triadic color harmony groups three colors that are evenly spaced from another and form a triangle on the color wheel.



14923166



9489081



12368869

Complementary

The Complementary color scheme is a pair of colors which are on the opposite of each other on the color wheel.



14923166



10407139

Split Complementary

Split-complementary colors differ from the complementary color scheme. The scheme consists of three colors, the original color and two neighbors of the complement color.



10535655



14923166



8768206

Square

The Square scheme is like the rectangle color scheme, but the four colors are evenly spaced on the color wheel.



14923166



10864805



9160671



14005464

Rectangle

The Rectangle color scheme consists of four colors that form a rectangle on the color wheel.



14923166



12959894



9160671



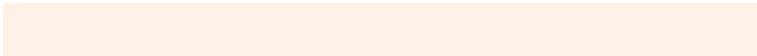
11779559

Sweetspot

The Sweet Spot groups the original color and five complimentary colors.



14923166



16773352



14917324



8418929



0



8421504

Same Dimension

The Same Dimension uses a secret algorithm to generate beautiful new colors.



14923166



16761507



14932126



7564135



11746304



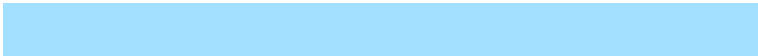
3346688

Inverse Universe

The Inverse Universe completely reimagines the original color for something new.



10407139



10739967



10398435



6778739



30643



8755

Previews

White Background



This preview shows how the Decimal color 14923166 looks on a white background.

Color Contrast Check

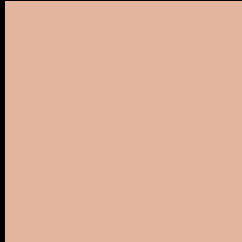
Large Text (above 18pt) WCAG AA × Fail

Any Text WCAG AA × Fail

Large Text (above 18pt) WCAG AAA × Fail

Any Text WCAG AAA × Fail

Black Background



This preview shows how the Decimal color 14923166 looks on a black background.

Color Contrast Check

Large Text (above 18pt) WCAG AA ✓ Pass

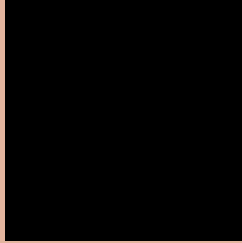
Any Text WCAG AA ✓ Pass

Large Text (above 18pt) WCAG AAA ✓ Pass

Any Text WCAG AAA ✓ Pass

If you want to check with other color combinations, try the [Color Contrast Checker](#).

Decimal 14923166 Background



This preview shows how black text looks on a background with the Decimal color 14923166.

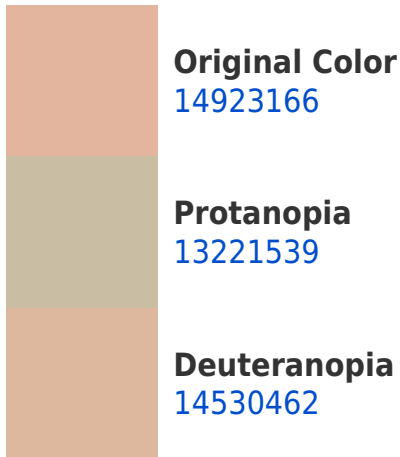



This preview shows how white text looks on a background with the Decimal color 14923166.

Color Blindness Simulation

Color vision deficiency is a very complex topic, and I could not describe the different causes any better than Wikipedia does, so if you want to learn more, you should check out their [article about color blindness](#).

Dichromacy





Tritanopia
15118526

Trichromacy



Original Color
14923166

Protanomaly
13810593

Deuteranomaly
14661278

Tritanomaly
15053490

Monochromacy



Original Color
14923166

Achromatopsia
12632256

Achromatomaly
13483188

CSS Examples

Text

The CSS property to change the color of the text to Decimal 14923166 is called "color". The color property can be set on classes, ids or directly on the HTML element.

This example shows how text in the color #E3B59E looks like.

```
.text, #text, p{  
    color:#E3B59E  
}
```

If you want to add a text shadow in that color use the text-shadow property, you can generate a text shadow directly with our [CSS Text Shadow Generator](#).

Here you see how black text with a 4 pixel #E3B59E colored shadow looks like.

```
.shadow{ text-shadow: 4px 4px 2px #E3B59E
}
```

Border

The CSS property to change the border of an element to Decimal 14923166 is called "border". The border property can be set on classes, ids or directly on the HTML element.

This example shows the color as border, it can be applied via the CSS property "border" or "border-color".

```
.border, #border, table{ border:4px solid
#E3B59E }
```

If only the border color should be changed use the property `border-color`.

```
.border{ border-color:#E3B59E }
```

If you want to add a box shadow in that color use:

Here you see how a box with a 4 pixel #E3B59E colored shadow looks like.

```
.boxshadow{ -moz-box-shadow:4px 4px 4px  
4px #E3B59E; -webkit-box-shadow:4px 4px  
4px 4px #E3B59E; box-shadow:4px 4px 4px  
4px #E3B59E }
```

Background

The CSS property to change the background color of an element to Decimal 14923166 is called "background". The background property can be set on classes, ids or directly on the HTML element.

```
.background, #background, body{  
background:#E3B59E }
```

If only the background color should be changed can be used:

```
.background{ background-color:#E3B59E }
```

This example shows the color as background, it is applied via the CSS property "background".

To optimize and compress your CSS code, you can use our [online CSS compressor and optimizer](#) based on csstidy. If you want to create a linear or radial gradient as background or border, check our [CSS Gradient Generator](#).

Hey! You found this booklet interesting? Support Converting Colors with the new Membership Option!

The pro membership hides all ads, plus gives you double the colors in the color bucket, and more awesome pro features!

[Learn more, Memberships starting at \\$2.50/m!](#)

**Follow me
on Twitter!**

@ConvertingColor