

Converting Colors

Decimal(14924452)

Have a look what the booklet for
Decimal(14924452) contains.

Decimal(14924452)	3
<i>Conversions</i>	4
<i>Details</i>	6
<i>Harmonies</i>	11
<i>Previews</i>	23
<i>Color Blindness Simulation</i>	26
<i>CSS Examples</i>	29

Color

Decimal(14924452)

Conversions

Conversions Part 1

Format	Color
Hex	E3BAA4
RGB	227, 186, 164
RGB Percent	89%, 73%, 64%
CMY	0.1098, 0.2706, 0.3569
CMYK	0.00, 0.18, 0.28, 0.11
HSL	21°, 53%, 77%
HSV	21°, 28%, 89%
XYZ	55.9383, 54.1290, 42.6216
YIQ	195.7510, 31.4980, 1.8500

Conversions

Conversions Part 2

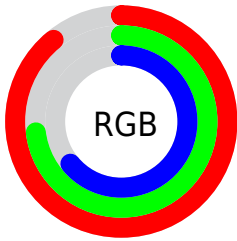
Format	Color
R _Y B	227, 198, 164
Decimal	14924452
CIE Lab	78.54, 11.53, 16.69
CIE LCh	79, 20.284, 55.374
Yxy	54.1290, 0.3664, 0.3545
Android (android.graphics.Color)	4293114532 (0xFFE3BAA4)
YUV	195.7510, -15.6532, 27.4054
Hunter-Lab	73.5724, 6.9646, 17.1531

Details

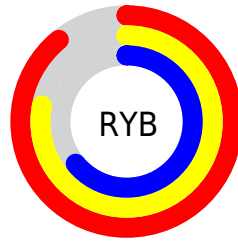
The Decimal color **14924452** is a light color, and the websafe version is hex **FFCCCC**. A complement of this color would be **10800611**, and the grayscale version is **12895428**.

A 20% lighter version of the original color is **16773851**, and **11240816** is the 20% darker color. If you saturate the color by 10%, you get **14920589**, and if you desaturate by 10%, it is **14928315**.

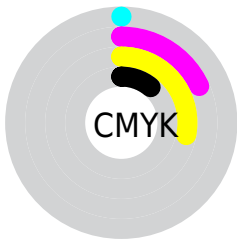
Distribution



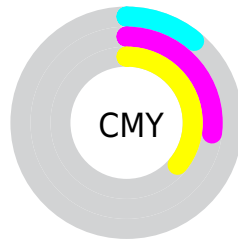
- Red (89%)
- Green (73%)
- Blue (64%)



- Red (89%)
- Yellow (78%)
- Blue (64%)



- Cyan (0%)
- Magenta (18%)
- Yellow (28%)
- Black (11%)



- Cyan (11%)
- Magenta (27%)
- Yellow (36%)

Brightness & Saturation Gradients

These gradients show how the Decimal color 14924452 changes by changing the brightness by 10 percent. The first figure shows a shift by +10% for each color and the second figure -10%.

Similar to the brightness gradients but the following saturation gradients show a change of the Decimal color 14924452 by changing the saturation by 10% instead.

 14924452

 14924452

16777215

 13082506

 16773851

 11240816

 16777208

 9464920

 7689024

 6044714

 4400661

 2888192

 851968

 0

 14924452

 14924452

 14920589

 14928315

 14916727

 14932177

 14913120

 14935784

 14909257

 14939647

 14905395

 14942207

 14901532

 14897925

 14896896

Harmonies

Analogous

The Analogous color harmony consists of three colors that are next to each other on the color wheel.



15382195



14924452



13942941

Triad

The Triadic color harmony groups three colors that are evenly spaced from another and form a triangle on the color wheel.



14924452



10014143



12763108

Complementary

The Complementary color scheme is a pair of colors which are on the opposite of each other on the color wheel.



14924452



10800611

Split Complementary

Split-complementary colors differ from the complementary color scheme. The scheme consists of three colors, the original color and two neighbors of the complement color.



11126247



14924452



9424338

Square

The Square scheme is like the rectangle color scheme, but the four colors are evenly spaced on the color wheel.



14924452



11193260



9882337



14203352

Rectangle

The Rectangle color scheme consists of four colors that form a rectangle on the color wheel.



14924452



13091998



9882337



12239334

Sweetspot

The Sweet Spot groups the original color and five complimentary colors.



14924452



16773867



14918862



8419187



0



8421504

Same Dimension

The Same Dimension uses a secret algorithm to generate beautiful new colors.



14924452



16763051



14932132



7564135



11746816



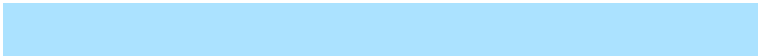
3346944

Inverse Universe

The Inverse Universe completely reimagines the original color for something new.



10800611



11264767



10792931



6778739



29875



8499

Previews

White Background



This preview shows how the Decimal color 14924452 looks on a white background.

Color Contrast Check

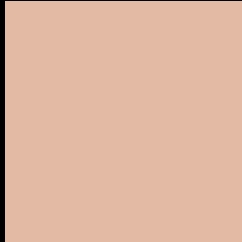
Large Text (above 18pt) WCAG AA × Fail

Any Text WCAG AA × Fail

Large Text (above 18pt) WCAG AAA × Fail

Any Text WCAG AAA × Fail

Black Background



This preview shows how the Decimal color 14924452 looks on a black background.

Color Contrast Check

Large Text (above 18pt) WCAG AA ✓ Pass

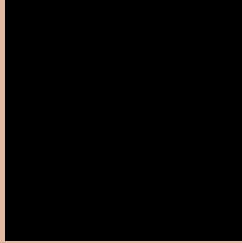
Any Text WCAG AA ✓ Pass

Large Text (above 18pt) WCAG AAA ✓ Pass

Any Text WCAG AAA ✓ Pass

If you want to check with other color combinations, try the [Color Contrast Checker](#).

Decimal 14924452 Background



This preview shows how black text looks on a background with the Decimal color 14924452.




This preview shows how white text looks on a background with the Decimal color 14924452.

Color Blindness Simulation

Color vision deficiency is a very complex topic, and I could not describe the different causes any better than Wikipedia does, so if you want to learn more, you should check out their [article about color blindness](#).

Dichromacy





Tritanopia
15185348

Trichromacy



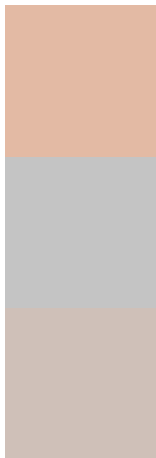
Original Color
14924452

Protanomaly
13942695

Deuteranomaly
14793636

Tritanomaly
15120312

Monochromacy



Original Color
14924452

Achromatopsia
12895428

Achromatomaly
13615288

CSS Examples

Text

The CSS property to change the color of the text to Decimal 14924452 is called "color". The color property can be set on classes, ids or directly on the HTML element.

This example shows how text in the color #E3BAA4 looks like.

```
.text, #text, p{  
  color:#E3BAA4  
}
```

If you want to add a text shadow in that color use the text-shadow property, you can generate a text shadow directly with our [CSS Text Shadow Generator](#).

Here you see how black text with a 4 pixel #E3BAA4 colored shadow looks like.

```
.shadow{ text-shadow: 4px 4px 2px #E3BAA4
}
```

Border

The CSS property to change the border of an element to Decimal 14924452 is called "border". The border property can be set on classes, ids or directly on the HTML element.

This example shows the color as border, it can be applied via the CSS property "border" or "border-color".

```
.border, #border, table{ border:4px solid
#E3BAA4 }
```

If only the border color should be changed use the property `border-color`.

```
.border{ border-color:#E3BAA4 }
```

If you want to add a box shadow in that color use:

Here you see how a box with a 4 pixel #E3BAA4 colored shadow looks like.

```
.boxshadow{ -moz-box-shadow:4px 4px 4px  
4px #E3BAA4; -webkit-box-shadow:4px 4px  
4px 4px #E3BAA4; box-shadow:4px 4px 4px  
4px #E3BAA4 }
```

Background

The CSS property to change the background color of an element to Decimal 14924452 is called "background". The background property can be set on classes, ids or directly on the HTML element.

```
.background, #background, body{  
background:#E3BAA4 }
```

If only the background color should be changed can be used:

```
.background{ background-color:#E3BAA4 }
```

This example shows the color as background, it is applied via the CSS property "background".

To optimize and compress your CSS code, you can use our [online CSS compressor and optimizer](#) based on csstidy. If you want to create a linear or radial gradient as background or border, check our [CSS Gradient Generator](#).

Hey! You found this booklet interesting? Support Converting Colors with the new Membership Option!

The pro membership hides all ads, plus gives you double the colors in the color bucket, and more awesome pro features!

[Learn more, Memberships starting at \\$2.50/m!](#)

**Follow me
on Twitter!**

@ConvertingColor