

Converting Colors

Decimal(14925473)

Have a look what the booklet for
Decimal(14925473) contains.

Decimal(14925473)	3
<i>Conversions</i>	4
<i>Details</i>	6
<i>Harmonies</i>	11
<i>Previews</i>	23
<i>Color Blindness Simulation</i>	26
<i>CSS Examples</i>	29

Color

Decimal(14925473)

Conversions

Conversions Part 1

Format	Color
Hex	E3BEA1
RGB	227, 190, 161
RGB Percent	89%, 75%, 63%
CMY	0.1098, 0.2549, 0.3686
CMYK	0.00, 0.16, 0.29, 0.11
HSL	26°, 54%, 76%
HSV	26°, 29%, 89%
XYZ	56.5250, 55.7310, 41.4962
YIQ	197.7570, 31.3610, -1.1750

Conversions

Conversions Part 2

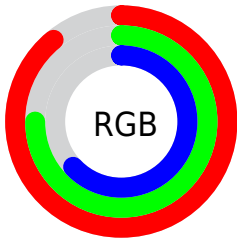
Format	Color
RYB	227, 213, 161
Decimal	14925473
CIELab	79.46, 9.00, 19.58
CIELCh	79, 21.554, 65.306
Yxy	55.7310, 0.3676, 0.3625
Android (android.graphics.Color)	4293115553 (0xFFE3BEA1)
YUV	197.7570, -18.1212, 25.6461
Hunter-Lab	74.6532, 4.5114, 19.3007

Details

The Decimal color **14925473** is a light color, and the websafe version is hex **FFCC99**. A complement of this color would be **10602211**, and the grayscale version is **13027014**.

A 20% lighter version of the original color is **16774872**, and **11241837** is the 20% darker color. If you saturate the color by 10%, you get **14922122**, and if you desaturate by 10%, it is **14928824**.

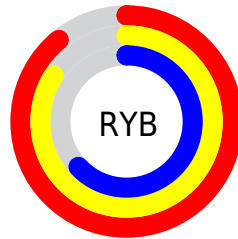
Distribution



Red (89%)

Green (75%)

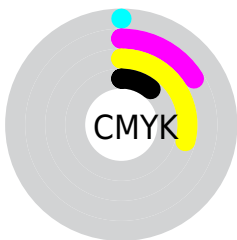
Blue (63%)



Red (89%)

Yellow (84%)

Blue (63%)

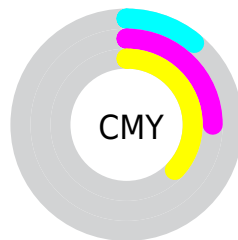


Cyan (0%)

Magenta (16%)

Yellow (29%)

Black (11%)



Cyan (11%)

Magenta (25%)

Yellow (37%)

Brightness & Saturation Gradients

These gradients show how the Decimal color 14925473 changes by changing the brightness by 10 percent. The first figure shows a shift by +10% for each color and the second figure -10%.

Similar to the brightness gradients but the following saturation gradients show a change of the Decimal color 14925473 by changing the saturation by 10% instead.

 14925473

 14925473

16777215

 13083527

 16774872

 11241837

 16777204

 9465685

 7690046

 6045735

 4401683

 2888960

 1048576

 0

 14925473

 14925473

 14922122

 14928824

 14919028

 14931918

 14915677

 14935269

 14912326

 14938620

 14908976

 14941951

 14905881

 14942207

 14902530

 14902272

Harmonies

Analogous

The Analogous color harmony consists of three colors that are next to each other on the color wheel.



15579567



14925473



13747613

Triad

The Triadic color harmony groups three colors that are evenly spaced from another and form a triangle on the color wheel.



14925473



9687496



13484006

Complementary

The Complementary color scheme is a pair of colors which are on the opposite of each other on the color wheel.



14925473



10602211

Split Complementary

Split-complementary colors differ from the complementary color scheme. The scheme consists of three colors, the original color and two neighbors of the complement color.



11716076



14925473



9359323

Square

The Square scheme is like the rectangle color scheme, but the four colors are evenly spaced on the color wheel.



14925473



10801075



10210281



14858710

Rectangle

The Rectangle color scheme consists of four colors that form a rectangle on the color wheel.



14925473



12765600



10210281



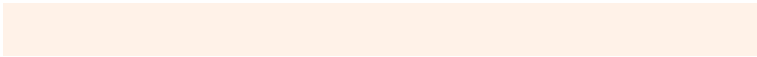
12894697

Sweetspot

The Sweet Spot groups the original color and five complimentary colors.



14925473



16773864



14918086



8419441



0



8421504

Same Dimension

The Same Dimension uses a secret algorithm to generate beautiful new colors.



14925473



16764326



14933921



7564391



11750912



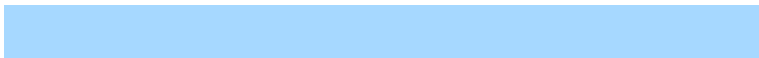
3347968

Inverse Universe

The Inverse Universe completely reimagines the original color for something new.



10602211



10934527



10593763



6778483



25779



7475

Previews

White Background



This preview shows how the Decimal color 14925473 looks on a white background.

Color Contrast Check

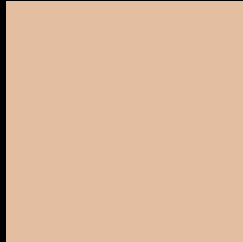
Large Text (above 18pt) WCAG AA × Fail

Any Text WCAG AA × Fail

Large Text (above 18pt) WCAG AAA × Fail

Any Text WCAG AAA × Fail

Black Background



This preview shows how the Decimal color 14925473 looks on a black background.

Color Contrast Check

Large Text (above 18pt) WCAG AA ✓ Pass

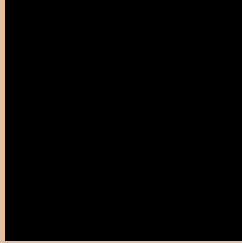
Any Text WCAG AA ✓ Pass

Large Text (above 18pt) WCAG AAA ✓ Pass

Any Text WCAG AAA ✓ Pass

If you want to check with other color combinations, try the [Color Contrast Checker](#).

Decimal 14925473 Background



This preview shows how black text looks on a background with the Decimal color 14925473.




This preview shows how white text looks on a background with the Decimal color 14925473.

Color Blindness Simulation

Color vision deficiency is a very complex topic, and I could not describe the different causes any better than Wikipedia does, so if you want to learn more, you should check out their [article about color blindness](#).

Dichromacy





Tritanopia
15186375

Trichromacy



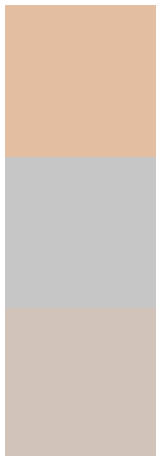
Original Color
14925473

Protanomaly
14140067

Deuteranomaly
14990753

Tritanomaly
15121337

Monochromacy



Original Color
14925473

Achromatopsia
13027014

Achromatomaly
13747129

CSS Examples

Text

The CSS property to change the color of the text to Decimal 14925473 is called "color". The color property can be set on classes, ids or directly on the HTML element.

This example shows how text in the color #E3BEA1 looks like.

```
.text, #text, p{  
  color:#E3BEA1  
}
```

If you want to add a text shadow in that color use the text-shadow property, you can generate a text shadow directly with our [CSS Text Shadow Generator](#).

Here you see how black text with a 4 pixel #E3BEA1 colored shadow looks like.

```
.shadow{ text-shadow: 4px 4px 2px #E3BEA1
}
```

Border

The CSS property to change the border of an element to Decimal 14925473 is called "border". The border property can be set on classes, ids or directly on the HTML element.

This example shows the color as border, it can be applied via the CSS property "border" or "border-color".

```
.border, #border, table{ border:4px solid
#E3BEA1 }
```

If only the border color should be changed use the property `border-color`.

```
.border{ border-color:#E3BEA1 }
```

If you want to add a box shadow in that color use:

Here you see how a box with a 4 pixel #E3BEA1 colored shadow looks like.

```
.boxshadow{ -moz-box-shadow:4px 4px 4px  
4px #E3BEA1; -webkit-box-shadow:4px 4px  
4px 4px #E3BEA1; box-shadow:4px 4px 4px  
4px #E3BEA1 }
```

Background

The CSS property to change the background color of an element to Decimal 14925473 is called "background". The background property can be set on classes, ids or directly on the HTML element.

```
.background, #background, body{  
background:#E3BEA1 }
```

If only the background color should be changed can be used:

```
.background{ background-color:#E3BEA1 }
```

This example shows the color as background, it is applied via the CSS property "background".

To optimize and compress your CSS code, you can use our [online CSS compressor and optimizer](#) based on csstidy. If you want to create a linear or radial gradient as background or border, check our [CSS Gradient Generator](#).

Hey! You found this booklet interesting? Support Converting Colors with the new Membership Option!

The pro membership hides all ads, plus gives you double the colors in the color bucket, and more awesome pro features!

[Learn more, Memberships starting at \\$2.50/m!](#)

**Follow me
on Twitter!**

@ConvertingColor