

# Converting Colors

Decimal(14925500)

Have a look what the booklet for  
Decimal(14925500) contains.

|  |    |
|--|----|
| <b>Decimal(14925500)</b> .....                 | 3  |
| <i><b>Conversions</b></i> .....                | 4  |
| <i><b>Details</b></i> .....                    | 6  |
| <i><b>Harmonies</b></i> .....                  | 11 |
| <i><b>Previews</b></i> .....                   | 23 |
| <i><b>Color Blindness Simulation</b></i> ..... | 26 |
| <i><b>CSS Examples</b></i> .....               | 29 |

# **Color**

**Decimal(14925500)**

# Conversions

## Conversions Part 1

| Format      | Color                     |
|-------------|---------------------------|
| Hex         | E3BEBC                    |
| RGB         | 227, 190, 188             |
| RGB Percent | 89%, 75%, 74%             |
| CMY         | 0.1098, 0.2549, 0.2627    |
| CMYK        | 0.00, 0.16, 0.17, 0.11    |
| HSL         | 3°, 41%, 81%              |
| HSV         | 3°, 17%, 89%              |
| XYZ         | 59.1691, 56.7886, 55.4197 |
| YIQ         | 200.8350, 22.6940, 7.2220 |

# Conversions

## Conversions Part 2

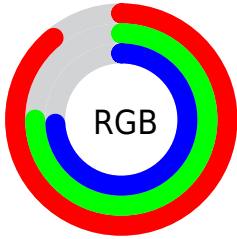
| Format                              | Color                         |
|-------------------------------------|-------------------------------|
| R <sub>Y</sub> B                    | 227, 190, 188                 |
| Decimal                             | 14925500                      |
| CIE Lab                             | 80.06, 12.87, 5.94            |
| CIE LCh                             | 80, 14.177, 24.754            |
| Yxy                                 | 56.7886, 0.3453,<br>0.3314    |
| Android<br>(android.graphics.Color) | 4293115580<br>(0xFFE3BEB3)    |
| YUV                                 | 200.8350, -6.3277,<br>22.9467 |
| Hunter-Lab                          | 75.3582, 8.2761,<br>9.1479    |

# Details

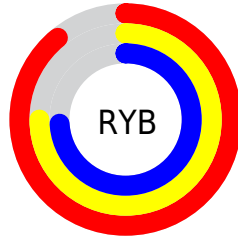
The Decimal color **14925500** is a light color, and the websafe version is hex **FFCCCC**. A complement of this color would be **12378595**, and the grayscale version is **13224393**.

A 20% lighter version of the original color is **16774900**, and **11241863** is the 20% darker color. If you saturate the color by 10%, you get **14919845**, and if you desaturate by 10%, it is **14931155**.

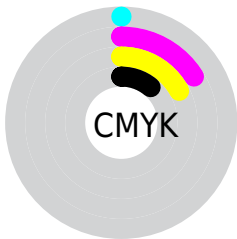
# Distribution



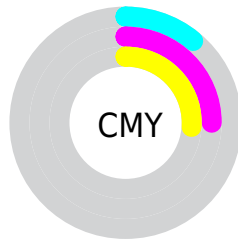
- Red (89%)
- Green (75%)
- Blue (74%)



- Red (89%)
- Yellow (75%)
- Blue (74%)



- Cyan (0%)
- Magenta (16%)
- Yellow (17%)
- Black (11%)



- Cyan (11%)
- Magenta (25%)
- Yellow (26%)

# Brightness & Saturation Gradients

These gradients show how the Decimal color 14925500 changes by changing the brightness by 10 percent. The first figure shows a shift by +10% for each color and the second figure -10%.

Similar to the brightness gradients but the following saturation gradients show a change of the Decimal color 14925500 by changing the saturation by 10% instead.



 14925500

 14925500

16777215

 13083553

 16774900

 11241863

 9465710

 7755605

 6111038

 4532520

 3019796

 1703937

 0

 14925500

 14925500

 14919845

 14931155

 14914447

 14936553

 14908792

 14942207

 14903393

 14897739

 14892340

 14886685

 14881286

 14879744

# Harmonies

## Analogous

The Analogous color harmony consists of three colors that are next to each other on the color wheel.



14728905



14925500



14598577

# Triad

The Triadic color harmony groups three colors that are evenly spaced from another and form a triangle on the color wheel.



14925500



11979959



11978977

# Complementary

The Complementary color scheme is a pair of colors which are on the opposite of each other on the color wheel.



14925500



12378595

# Split Complementary

Split-complementary colors differ from the complementary color scheme. The scheme consists of three colors, the original color and two neighbors of the complement color.



11128028



14925500



11194052

# Square

The Square scheme is like the rectangle color scheme, but the four colors are evenly spaced on the color wheel.



14925500



12962222



10866385



13026526

# Rectangle

The Rectangle color scheme consists of four colors that form a rectangle on the color wheel.



14925500



14205869



10866385



11651808

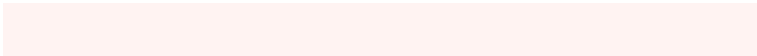


# Sweetspot

The Sweet Spot groups the original color and five complimentary colors.



14925500



16774130



14925025



8419448



0



8421504



# Same Dimension

The Same Dimension uses a secret algorithm to generate beautiful new colors.



14925500



16764105



14930364



7563367



11733248



3343104



# Inverse Universe

The Inverse Universe completely reimagines the original color for something new.



12378595



13237503



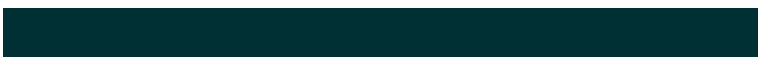
12373731



6779507



43443

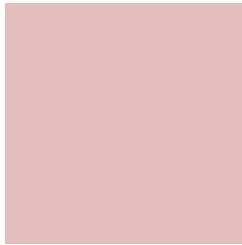


12339



# Previews

## White Background



This preview shows how the Decimal color 14925500 looks on a white background.

## Color Contrast Check

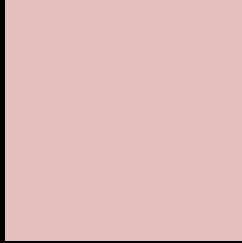
Large Text (above 18pt) WCAG AA × Fail

Any Text WCAG AA × Fail

Large Text (above 18pt) WCAG AAA × Fail

Any Text WCAG AAA × Fail

# Black Background



This preview shows how the Decimal color 14925500 looks on a black background.

## Color Contrast Check

Large Text (above 18pt) WCAG AA ✓ Pass

Any Text WCAG AA ✓ Pass

Large Text (above 18pt) WCAG AAA ✓ Pass

Any Text WCAG AAA ✓ Pass

If you want to check with other color combinations, try the [Color Contrast Checker](#).



## Decimal 14925500 Background



This preview shows how black text looks on a background with the Decimal color 14925500.



This preview shows how white text looks on a background with the Decimal color 14925500.

# Color Blindness Simulation

Color vision deficiency is a very complex topic, and I could not describe the different causes any better than Wikipedia does, so if you want to learn more, you should check out their [article about color blindness](#).

## Dichromacy



**Original Color**  
14925500

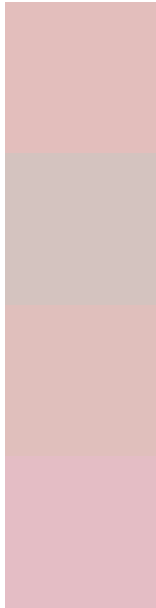
**Protanopia**  
13420224

**Deuteranopia**  
14598332



**Tritanopia**  
15056074

# Trichromacy



**Original Color**  
14925500

**Protanomaly**  
13943743

**Deuteranomaly**  
14729148

**Tritanomaly**  
14990789

# Monochromacy



**Original Color**  
14925500

**Achromatopsia**  
13224393

**Achromatomaly**  
13813188

# CSS Examples

## Text

The CSS property to change the color of the text to Decimal 14925500 is called "color". The color property can be set on classes, ids or directly on the HTML element.

This example shows how text in the color #E3BEBC looks like.

```
.text, #text, p{  
    color:#E3BEBC  
}
```

If you want to add a text shadow in that color use the text-shadow property, you can generate a text shadow directly with our [CSS Text Shadow Generator](#).

Here you see how black text with a 4 pixel #E3BEBC colored shadow looks like.

```
.shadow{ text-shadow: 4px 4px 2px #E3BEBC
}
```

## Border

The CSS property to change the border of an element to Decimal 14925500 is called "border". The border property can be set on classes, ids or directly on the HTML element.

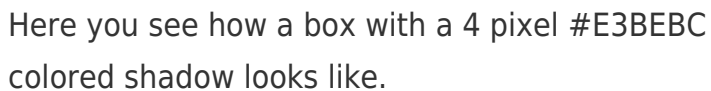
This example shows the color as border, it can be applied via the CSS property "border" or "border-color".

```
.border, #border, table{ border:4px solid
#E3BEBC }
```

If only the border color should be changed use the property `border-color`.

```
.border{ border-color:#E3BEBC }
```

If you want to add a box shadow in that color use:



Here you see how a box with a 4 pixel #E3BEBC colored shadow looks like.

```
.boxshadow{ -moz-box-shadow:4px 4px 4px  
4px #E3BEBC; -webkit-box-shadow:4px 4px  
4px 4px #E3BEBC; box-shadow:4px 4px 4px  
4px #E3BEBC }
```

# Background

The CSS property to change the background color of an element to Decimal 14925500 is called "background". The background property can be set on classes, ids or directly on the HTML element.

```
.background, #background, body{  
background:#E3BEBC }
```

If only the background color should be changed can be used:

```
.background{ background-color:#E3BEBC }
```

This example shows the color as background, it is applied via the CSS property "background".

To optimize and compress your CSS code, you can use our [online CSS compressor and optimizer](#) based on csstidy. If you want to create a linear or radial gradient as background or border, check our [CSS Gradient Generator](#).



Hey! You found this booklet interesting? Support Converting Colors with the new Membership Option!

The pro membership hides all ads, plus gives you double the colors in the color bucket, and more awesome pro features!

**[Learn more, Memberships starting at \\$2.50/m!](#)**

**Follow me  
on Twitter!**

@ConvertingColor