

# Converting Colors

Decimal(14926783)

Have a look what the booklet for  
Decimal(14926783) contains.

<b>Decimal(14926783)</b> .....	3
<i><b>Conversions</b></i> .....	4
<i><b>Details</b></i> .....	6
<i><b>Harmonies</b></i> .....	11
<i><b>Previews</b></i> .....	23
<i><b>Color Blindness Simulation</b></i> .....	26
<i><b>CSS Examples</b></i> .....	29

# **Color**

**Decimal(14926783)**

# Conversions

## Conversions Part 1

<b>Format</b>	<b>Color</b>
Hex	E3C3BF
RGB	227, 195, 191
RGB Percent	89%, 76%, 75%
CMY	0.1098, 0.2353, 0.2510
CMYK	0.00, 0.14, 0.16, 0.11
HSL	7°, 39%, 82%
HSV	7°, 16%, 89%
XYZ	60.5976, 59.1227, 57.5082
YIQ	204.1120, 20.3560, 5.5400

# Conversions

## Conversions Part 2

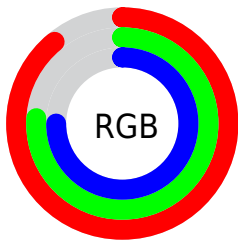
<b>Format</b>	<b>Color</b>
<b>R<sub>YB</sub></b>	227, 196, 191
Decimal	14926783
CIE <sub>Lab</sub>	81.36, 10.69, 6.19
CIE <sub>LCh</sub>	81, 12.352, 30.096
Yxy	59.1227, 0.3419, 0.3336
Android (android.graphics.Color)	4293116863 (0xFFE3C3BF)
YUV	204.1120, -6.4642, 20.0728
Hunter-Lab	76.8913, 6.1152, 9.4800

# Details

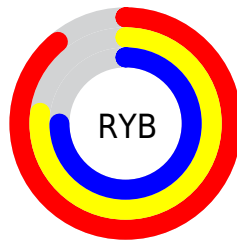
The Decimal color **14926783** is a light color, and the websafe version is hex **FFCCCC**. A complement of this color would be **12574691**, and the grayscale version is **13421772**.

A 20% lighter version of the original color is **16776439**, and **11242890** is the 20% darker color. If you saturate the color by 10%, you get **14921640**, and if you desaturate by 10%, it is **14931926**.

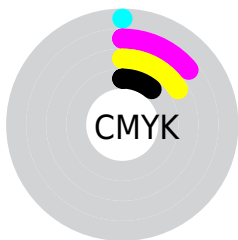
# Distribution



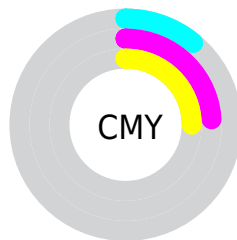
- Red (89%)
- Green (76%)
- Blue (75%)



- Red (89%)
- Yellow (77%)
- Blue (75%)



- Cyan (0%)
- Magenta (14%)
- Yellow (16%)
- Black (11%)



- Cyan (11%)
- Magenta (24%)
- Yellow (25%)

# Brightness & Saturation Gradients

These gradients show how the Decimal color 14926783 changes by changing the brightness by 10 percent. The first figure shows a shift by +10% for each color and the second figure -10%.

Similar to the brightness gradients but the following saturation gradients show a change of the Decimal color 14926783 by changing the saturation by 10% instead.



 14926783

 14926783

16777215

 13084836

 16776439

 11242890

 9466992

 7822168

 6112321

 4533547

 3020822

 1769472

 0

 14926783

 14926783

 14921640

 14931926

 14916498

 14937068

 14911099

 14942207

 14905956

 14900814

 14895671

 14890528

 14885385

 14883072

# Harmonies

## Analogous

The Analogous color harmony consists of three colors that are next to each other on the color wheel.



14861002



14926783



14599862

# Triad

The Triadic color harmony groups three colors that are evenly spaced from another and form a triangle on the color wheel.



14926783



12243134



12504033

# Complementary

The Complementary color scheme is a pair of colors which are on the opposite of each other on the color wheel.



14926783



12574691

# Split Complementary

Split-complementary colors differ from the complementary color scheme. The scheme consists of three colors, the original color and two neighbors of the complement color.



11718366



14926783



11588042

# Square

The Square scheme is like the rectangle color scheme, but the four colors are evenly spaced on the color wheel.



14926783



13094326



11391445



13486046

# Rectangle

The Rectangle color scheme consists of four colors that form a rectangle on the color wheel.



14926783



14207156



11391445



12242145

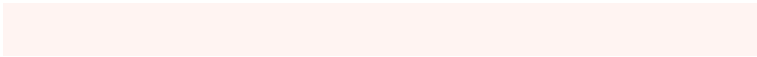


# Sweetspot

The Sweet Spot groups the original color and five complimentary colors.



14926783



16774386



14925791



8419704



0



8421504



# Same Dimension

The Same Dimension uses a secret algorithm to generate beautiful new colors.



14926783



16766159



14931391



7563623



11736064



3343872

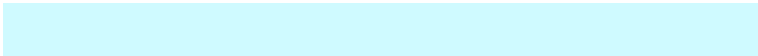


# Inverse Universe

The Inverse Universe completely reimagines the original color for something new.



12574691



13630207



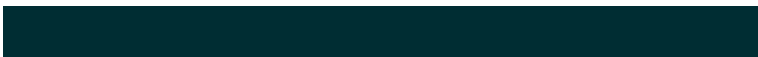
12570083



6779251



40883



11571



# Previews

## White Background



This preview shows how the Decimal color 14926783 looks on a white background.

## Color Contrast Check

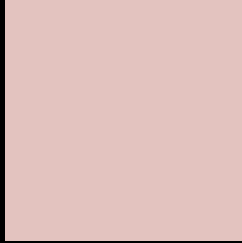
Large Text (above 18pt) WCAG AA × Fail

Any Text WCAG AA × Fail

Large Text (above 18pt) WCAG AAA × Fail

Any Text WCAG AAA × Fail

# Black Background



This preview shows how the Decimal color 14926783 looks on a black background.

## Color Contrast Check

Large Text (above 18pt) WCAG AA ✓ Pass

Any Text WCAG AA ✓ Pass

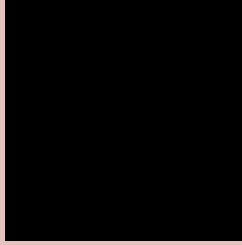
Large Text (above 18pt) WCAG AAA ✓ Pass

Any Text WCAG AAA ✓ Pass

If you want to check with other color combinations, try the [Color Contrast Checker](#).



## Decimal 14926783 Background



This preview shows how black text looks on a background with the Decimal color 14926783.




This preview shows how white text looks on a background with the Decimal color 14926783.

# Color Blindness Simulation

Color vision deficiency is a very complex topic, and I could not describe the different causes any better than Wikipedia does, so if you want to learn more, you should check out their [article about color blindness](#).

## Dichromacy





**Tritanopia**  
15057103

# Trichromacy



**Original Color**  
14926783

**Protanomaly**  
14141378

**Deuteranomaly**  
14861247

**Tritanomaly**  
14991817

# Monochromacy



**Original Color**  
14926783

**Achromatopsia**  
13421772

**Achromatomaly**  
13945287

# CSS Examples

## Text

The CSS property to change the color of the text to Decimal 14926783 is called "color". The color property can be set on classes, ids or directly on the HTML element.

This example shows how text in the color #E3C3BF looks like.

```
.text, #text, p{  
    color:#E3C3BF  
}
```

If you want to add a text shadow in that color use the text-shadow property, you can generate a text shadow directly with our [CSS Text Shadow Generator](#).

Here you see how black text with a 4 pixel #E3C3BF colored shadow looks like.

```
.shadow{ text-shadow: 4px 4px 2px #E3C3BF
}
```

## Border

The CSS property to change the border of an element to Decimal 14926783 is called "border". The border property can be set on classes, ids or directly on the HTML element.

This example shows the color as border, it can be applied via the CSS property "border" or "border-color".

```
.border, #border, table{ border:4px solid
#E3C3BF }
```

If only the border color should be changed use the property `border-color`.

```
.border{ border-color:#E3C3BF }
```

If you want to add a box shadow in that color use:

Here you see how a box with a 4 pixel #E3C3BF colored shadow looks like.

```
.boxshadow{ -moz-box-shadow:4px 4px 4px  
4px #E3C3BF; -webkit-box-shadow:4px 4px  
4px 4px #E3C3BF; box-shadow:4px 4px 4px  
4px #E3C3BF }
```

# Background

The CSS property to change the background color of an element to Decimal 14926783 is called "background". The background property can be set on classes, ids or directly on the HTML element.

```
.background, #background, body{  
background:#E3C3BF }
```

If only the background color should be changed can be used:

```
.background{ background-color:#E3C3BF }
```

This example shows the color as background, it is applied via the CSS property "background".

To optimize and compress your CSS code, you can use our [online CSS compressor and optimizer](#) based on csstidy. If you want to create a linear or radial gradient as background or border, check our [CSS Gradient Generator](#).



Hey! You found this booklet interesting? Support Converting Colors with the new Membership Option!

The pro membership hides all ads, plus gives you double the colors in the color bucket, and more awesome pro features!

**[Learn more, Memberships starting at \\$2.50/m!](#)**

**Follow me  
on Twitter!**

@ConvertingColor