

Converting Colors

Decimal(14929353)

Have a look what the booklet for
Decimal(14929353) contains.

Decimal(14929353)	3
<i>Conversions</i>	4
<i>Details</i>	6
<i>Harmonies</i>	11
<i>Previews</i>	23
<i>Color Blindness Simulation</i>	26
<i>CSS Examples</i>	29

Color

Decimal(14929353)

Conversions

Conversions Part 1

Format	Color
Hex	E3CDC9
RGB	227, 205, 201
RGB Percent	89%, 80%, 79%
CMY	0.1098, 0.1961, 0.2118
CMYK	0.00, 0.10, 0.11, 0.11
HSL	9°, 32%, 84%
HSV	9°, 11%, 89%
XYZ	64.0525, 64.2106, 64.2763
YIQ	211.1220, 14.3960, 3.4200

Conversions

Conversions Part 2

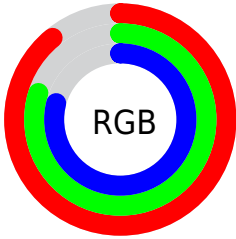
Format	Color
RYP	227, 206, 201
Decimal	14929353
CIELab	84.08, 7.01, 4.77
CIElCh	84, 8.475, 34.242
Yxy	64.2106, 0.3327, 0.3335
Android (android.graphics.Color)	4293119433 (0xFFE3CDC9)
YUV	211.1220, -4.9901, 13.9250
Hunter-Lab	80.1315, 2.4524, 8.5335

Details

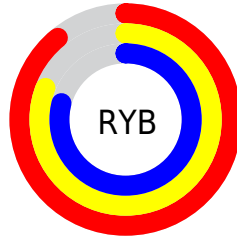
The Decimal color **14929353** is a light color, and the websafe version is hex **CCCCCC**. A complement of this color would be **13230051**, and the grayscale version is **13882323**.

A 20% lighter version of the original color is **16777215**, and **11245459** is the 20% darker color. If you saturate the color by 10%, you get **14924466**, and if you desaturate by 10%, it is **14934240**.

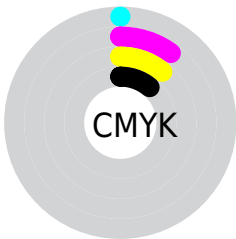
Distribution



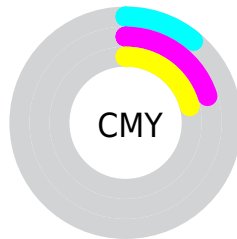
- Red (89%)
- Green (80%)
- Blue (79%)



- Red (89%)
- Yellow (81%)
- Blue (79%)



- Cyan (0%)
- Magenta (10%)
- Yellow (11%)
- Black (11%)



- Cyan (11%)
- Magenta (20%)
- Yellow (21%)

Brightness & Saturation Gradients

These gradients show how the Decimal color 14929353 changes by changing the brightness by 10 percent. The first figure shows a shift by +10% for each color and the second figure -10%.

Similar to the brightness gradients but the following saturation gradients show a change of the Decimal color 14929353 by changing the saturation by 10% instead.

■ 14929353

16777215

■ 14929353

■ 13087406

■ 11245459

■ 9534841

■ 7824481

■ 6179913

■ 4601138

■ 3153949

■ 1837316

■ 0

 14929353

 14929353

 14924466

 14934240

 14919580

 14939126

 14914437

 14942207

 14909550

 14904664

 14899777

 14894890

 14889747

 14885632

Harmonies

Analogous

The Analogous color harmony consists of three colors that are next to each other on the color wheel.



14929105



14929353



14667716

Triad

The Triadic color harmony groups three colors that are evenly spaced from another and form a triangle on the color wheel.



14929353



12965579



13357793

Complementary

The Complementary color scheme is a pair of colors which are on the opposite of each other on the color wheel.



14929353



13230051

Split Complementary

Split-complementary colors differ from the complementary color scheme. The scheme consists of three colors, the original color and two neighbors of the complement color.



12834016



14929353



12638163

Square

The Square scheme is like the rectangle color scheme, but the four colors are evenly spaced on the color wheel.



14929353



13554884



12506842



14012383

Rectangle

The Rectangle color scheme consists of four colors that form a rectangle on the color wheel.



14929353



14340546



12506842



13161441

Sweetspot

The Sweet Spot groups the original color and five complimentary colors.



14929353



16775671



14928351



8420218



0



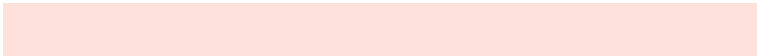
8421504

Same Dimension

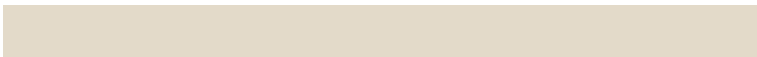
The Same Dimension uses a secret algorithm to generate beautiful new colors.



14929353



16769499



14932681



7563623



11737856



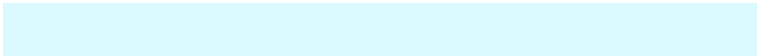
3344384

Inverse Universe

The Inverse Universe completely reimagines the original color for something new.



13230051



14416639



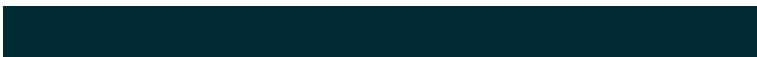
13226723



6779251



38835



11059

Previews

White Background



This preview shows how the Decimal color 14929353 looks on a white background.

Color Contrast Check

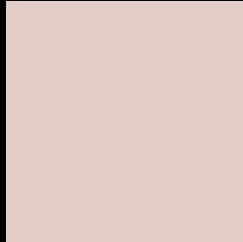
Large Text (above 18pt) WCAG AA × Fail

Any Text WCAG AA × Fail

Large Text (above 18pt) WCAG AAA × Fail

Any Text WCAG AAA × Fail

Black Background



This preview shows how the Decimal color 14929353 looks on a black background.

Color Contrast Check

Large Text (above 18pt) WCAG AA ✓ Pass

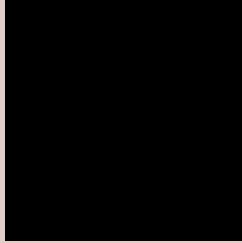
Any Text WCAG AA ✓ Pass

Large Text (above 18pt) WCAG AAA ✓ Pass

Any Text WCAG AAA ✓ Pass

If you want to check with other color combinations, try the [Color Contrast Checker](#).

Decimal 14929353 Background



This preview shows how black text looks on a background with the Decimal color 14929353.



This preview shows how white text looks on a background with the Decimal color 14929353.

Color Blindness Simulation

Color vision deficiency is a very complex topic, and I could not describe the different causes any better than Wikipedia does, so if you want to learn more, you should check out their [article about color blindness](#).

Dichromacy





Tritanopia
15059674

Trichromacy



Original Color
14929353

Protanomaly
14405834

Deuteranomaly
15191241

Tritanomaly
14994388

Monochromacy



Original Color
14929353

Achromatopsia
13882323

Achromatomaly
14275023

CSS Examples

Text

The CSS property to change the color of the text to Decimal 14929353 is called "color". The color property can be set on classes, ids or directly on the HTML element.

This example shows how text in the color #E3CDC9 looks like.

```
.text, #text, p{  
    color:#E3CDC9  
}
```

If you want to add a text shadow in that color use the text-shadow property, you can generate a text shadow directly with our [CSS Text Shadow Generator](#).

Here you see how black text with a 4 pixel #E3CDC9 colored shadow looks like.

```
.shadow{ text-shadow: 4px 4px 2px #E3CDC9
}
```

Border

The CSS property to change the border of an element to Decimal 14929353 is called "border". The border property can be set on classes, ids or directly on the HTML element.

This example shows the color as border, it can be applied via the CSS property "border" or "border-color".

```
.border, #border, table{ border:4px solid
#E3CDC9 }
```

If only the border color should be changed use the property `border-color`.

```
.border{ border-color:#E3CDC9 }
```

If you want to add a box shadow in that color use:

Here you see how a box with a 4 pixel #E3CDC9 colored shadow looks like.

```
.boxshadow{ -moz-box-shadow:4px 4px 4px  
4px #E3CDC9; -webkit-box-shadow:4px 4px  
4px 4px #E3CDC9; box-shadow:4px 4px 4px  
4px #E3CDC9 }
```

Background

The CSS property to change the background color of an element to Decimal 14929353 is called "background". The background property can be set on classes, ids or directly on the HTML element.

```
.background, #background, body{  
background:#E3CDC9 }
```

If only the background color should be changed can be used:

```
.background{ background-color:#E3CDC9 }
```

This example shows the color as background, it is applied via the CSS property "background".

To optimize and compress your CSS code, you can use our [online CSS compressor and optimizer](#) based on csstidy. If you want to create a linear or radial gradient as background or border, check our [CSS Gradient Generator](#).

Hey! You found this booklet interesting? Support Converting Colors with the new Membership Option!

The pro membership hides all ads, plus gives you double the colors in the color bucket, and more awesome pro features!

[Learn more, Memberships starting at \\$2.50/m!](#)

**Follow me
on Twitter!**

@ConvertingColor