

Converting Colors

Decimal(14929879)

Have a look what the booklet for
Decimal(14929879) contains.

Decimal(14929879)	3
<i>Conversions</i>	4
<i>Details</i>	6
<i>Harmonies</i>	11
<i>Previews</i>	23
<i>Color Blindness Simulation</i>	26
<i>CSS Examples</i>	29

Color

Decimal(14929879)

Conversions

Conversions Part 1

Format	Color
Hex	E3CFD7
RGB	227, 207, 215
RGB Percent	89%, 81%, 84%
CMY	0.1098, 0.1882, 0.1569
CMYK	0.00, 0.09, 0.05, 0.11
HSL	336°, 26%, 85%
HSV	336°, 9%, 89%
XYZ	66.2571, 65.8628, 73.5107
YIQ	213.8920, 9.3520, 6.7280

Conversions

Conversions Part 2

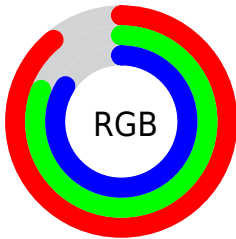
Format	Color
R _Y B	227, 207, 215
Decimal	14929879
CIE Lab	84.93, 8.31, -1.44
CIE LCh	85, 8.434, 350.158
Yxy	65.8628, 0.3222, 0.3203
Android (android.graphics.Color)	4293119959 (0xFFE3CFD7)
YUV	213.8920, 0.5462, 11.4957
Hunter-Lab	81.1559, 3.7077, 3.1045

Details

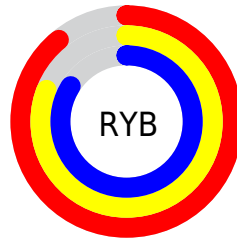
The Decimal color **14929879** is a light color, and the websafe version is hex **CCCCCC**. A complement of this color would be **13624283**, and the grayscale version is **14079702**.

A 20% lighter version of the original color is **16777215**, and **11311520** is the 20% darker color. If you saturate the color by 10%, you get **14923977**, and if you desaturate by 10%, it is **14935781**.

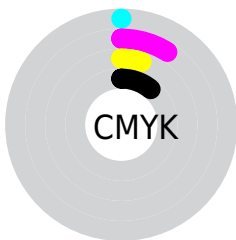
Distribution



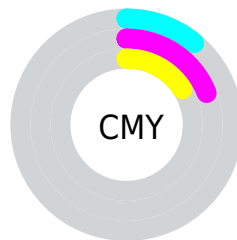
- Red (89%)
- Green (81%)
- Blue (84%)



- Red (89%)
- Yellow (81%)
- Blue (84%)



- Cyan (0%)
- Magenta (9%)
- Yellow (5%)
- Black (11%)



- Cyan (11%)
- Magenta (19%)
- Yellow (16%)

Brightness & Saturation Gradients

These gradients show how the Decimal color 14929879 changes by changing the brightness by 10 percent. The first figure shows a shift by +10% for each color and the second figure -10%.

Similar to the brightness gradients but the following saturation gradients show a change of the Decimal color 14929879 by changing the saturation by 10% instead.



 14929879

 14929879

 14923977

 14935781

 14918332

 14941426

 14912430

 14942207

 14906529

 14900883

 14894981

 14889080

 14883178

 14877532

Harmonies

Analogous

The Analogous color harmony consists of three colors that are next to each other on the color wheel.



14471390



14929879



15126479

Triad

The Triadic color harmony groups three colors that are evenly spaced from another and form a triangle on the color wheel.



14929879



14013893



12769504

Complementary

The Complementary color scheme is a pair of colors which are on the opposite of each other on the color wheel.



14929879



13624283

Split Complementary

Split-complementary colors differ from the complementary color scheme. The scheme consists of three colors, the original color and two neighbors of the complement color.



12704217



14929879



13424586

Square

The Square scheme is like the rectangle color scheme, but the four colors are evenly spaced on the color wheel.



14929879



14603205



12900817



13227748

Rectangle

The Rectangle color scheme consists of four colors that form a rectangle on the color wheel.



14929879



15061194



12900817



12703966

Sweetspot

The Sweet Spot groups the original color and five complimentary colors.



14929879



16775162



14405603



8419964



0



8421504

Same Dimension

The Same Dimension uses a secret algorithm to generate beautiful new colors.



14929879



16770030



14930383



7563116



11731015



3342356

Inverse Universe

The Inverse Universe completely reimagines the original color for something new.



14929879



16770030



13623779



7563116



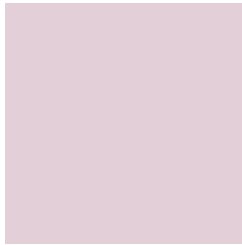
11731015



3342356

Previews

White Background



This preview shows how the Decimal color 14929879 looks on a white background.

Color Contrast Check

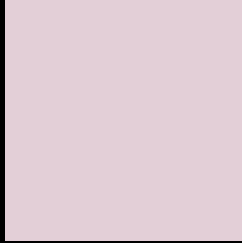
Large Text (above 18pt) WCAG AA × Fail

Any Text WCAG AA × Fail

Large Text (above 18pt) WCAG AAA × Fail

Any Text WCAG AAA × Fail

Black Background



This preview shows how the Decimal color 14929879 looks on a black background.

Color Contrast Check

Large Text (above 18pt) WCAG AA ✓ Pass

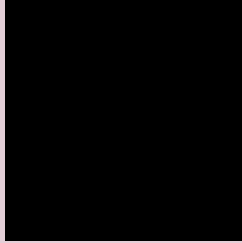
Any Text WCAG AA ✓ Pass

Large Text (above 18pt) WCAG AAA ✓ Pass

Any Text WCAG AAA ✓ Pass

If you want to check with other color combinations, try the [Color Contrast Checker](#).

Decimal 14929879 Background



This preview shows how black text looks on a background with the Decimal color 14929879.




This preview shows how white text looks on a background with the Decimal color 14929879.

Color Blindness Simulation

Color vision deficiency is a very complex topic, and I could not describe the different causes any better than Wikipedia does, so if you want to learn more, you should check out their [article about color blindness](#).

Dichromacy





Tritanopia
14995166

Trichromacy



Original Color
14929879

Protanomaly
14406360

Deuteranomaly
15126231

Tritanomaly
14995163

Monochromacy



Original Color
14929879

Achromatopsia
14079702

Achromatomaly
14406614

CSS Examples

Text

The CSS property to change the color of the text to Decimal 14929879 is called "color". The color property can be set on classes, ids or directly on the HTML element.

This example shows how text in the color #E3CFD7 looks like.

```
.text, #text, p{  
    color:#E3CFD7  
}
```

If you want to add a text shadow in that color use the text-shadow property, you can generate a text shadow directly with our [CSS Text Shadow Generator](#).

Here you see how black text with a 4 pixel #E3CFD7 colored shadow looks like.

```
.shadow{ text-shadow: 4px 4px 2px #E3CFD7
}
```

Border

The CSS property to change the border of an element to Decimal 14929879 is called "border". The border property can be set on classes, ids or directly on the HTML element.

This example shows the color as border, it can be applied via the CSS property "border" or "border-color".

```
.border, #border, table{ border:4px solid
#E3CFD7 }
```

If only the border color should be changed use the property `border-color`.

```
.border{ border-color:#E3CFD7 }
```

If you want to add a box shadow in that color use:

Here you see how a box with a 4 pixel #E3CFD7 colored shadow looks like.

```
.boxshadow{ -moz-box-shadow:4px 4px 4px  
4px #E3CFD7; -webkit-box-shadow:4px 4px  
4px 4px #E3CFD7; box-shadow:4px 4px 4px  
4px #E3CFD7 }
```

Background

The CSS property to change the background color of an element to Decimal 14929879 is called "background". The background property can be set on classes, ids or directly on the HTML element.

```
.background, #background, body{  
background:#E3CFD7 }
```

If only the background color should be changed can be used:

```
.background{ background-color:#E3CFD7 }
```

This example shows the color as background, it is applied via the CSS property "background".

To optimize and compress your CSS code, you can use our [online CSS compressor and optimizer](#) based on csstidy. If you want to create a linear or radial gradient as background or border, check our [CSS Gradient Generator](#).

Hey! You found this booklet interesting? Support Converting Colors with the new Membership Option!

The pro membership hides all ads, plus gives you double the colors in the color bucket, and more awesome pro features!

[Learn more, Memberships starting at \\$2.50/m!](#)

**Follow me
on Twitter!**

@ConvertingColor