

# Converting Colors

Decimal(14930387)

Have a look what the booklet for  
Decimal(14930387) contains.

<b>Decimal(14930387)</b> .....	3
<i><b>Conversions</b></i> .....	4
<i><b>Details</b></i> .....	6
<i><b>Harmonies</b></i> .....	11
<i><b>Previews</b></i> .....	23
<i><b>Color Blindness Simulation</b></i> .....	26
<i><b>CSS Examples</b></i> .....	29

# **Color**

**Decimal(14930387)**

# Conversions

## Conversions Part 1

Format	Color
Hex	E3D1D3
RGB	227, 209, 211
RGB Percent	89%, 82%, 83%
CMY	0.1098, 0.1804, 0.1725
CMYK	0.00, 0.08, 0.07, 0.11
HSL	353°, 24%, 85%
HSV	353°, 8%, 89%
XYZ	66.2369, 66.6350, 70.9988
YIQ	214.6100, 10.0860, 4.4380

# Conversions

## Conversions Part 2

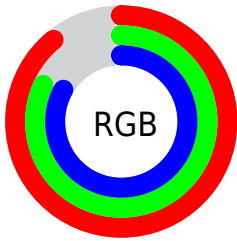
Format	Color
R <sub>Y</sub> B	227, 209, 211
Decimal	14930387
CIE Lab	85.32, 6.57, 1.26
CIE LCh	85, 6.691, 10.831
Yxy	66.6350, 0.3249, 0.3268
Android (android.graphics.Color)	4293120467 (0xFFE3D1D3)
YUV	214.6100, -1.7797, 10.8660
Hunter-Lab	81.6302, 1.9866, 5.5731

# Details

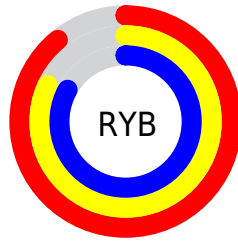
The Decimal color **14930387** is a light color, and the websafe version is hex **CCCCCC**. A complement of this color would be **13755361**, and the grayscale version is **14145495**.

A 20% lighter version of the original color is **16777215**, and **11312029** is the 20% darker color. If you saturate the color by 10%, you get **14924479**, and if you desaturate by 10%, it is **14936295**.

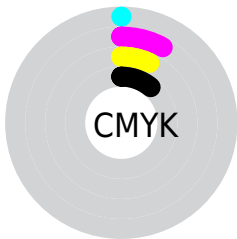
# Distribution



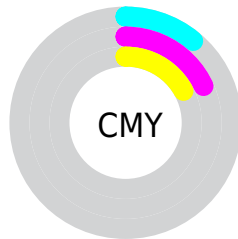
- Red (89%)
- Green (82%)
- Blue (83%)



- Red (89%)
- Yellow (82%)
- Blue (83%)



- Cyan (0%)
- Magenta (8%)
- Yellow (7%)
- Black (11%)



- Cyan (11%)
- Magenta (18%)
- Yellow (17%)

# Brightness & Saturation Gradients

These gradients show how the Decimal color 14930387 changes by changing the brightness by 10 percent. The first figure shows a shift by +10% for each color and the second figure -10%.

Similar to the brightness gradients but the following saturation gradients show a change of the Decimal color 14930387 by changing the saturation by 10% instead.



■ 14930387

16777215

■ 14930387

■ 13088183

■ 11312029

■ 9535874

■ 7825513

■ 6180689

■ 4667706

■ 3154725

■ 1838608

■ 0

 14930387

 14930387

 14924479

 14936295

 14918827

 14941947

 14912918

 14942207

 14907010

 14901358

 14895450

 14889542

 14883634

 14877981

# Harmonies

## Analogous

The Analogous color harmony consists of three colors that are next to each other on the color wheel.



14733785



14930387



14930637

# Triad

The Triadic color harmony groups three colors that are evenly spaced from another and form a triangle on the color wheel.



14930387



13752267



13359073

# Complementary

The Complementary color scheme is a pair of colors which are on the opposite of each other on the color wheel.



14930387



13755361

# Split Complementary

Split-complementary colors differ from the complementary color scheme. The scheme consists of three colors, the original color and two neighbors of the complement color.



13097181



14930387



13294033

# Square

The Square scheme is like the rectangle color scheme, but the four colors are evenly spaced on the color wheel.



14930387



14210505



13031895



13817313

# Rectangle

The Rectangle color scheme consists of four colors that form a rectangle on the color wheel.



14930387



14734282



13031895



13228256



# Sweetspot

The Sweet Spot groups the original color and five complimentary colors.



14930387



16775930



14799331



8420733



0



8421504

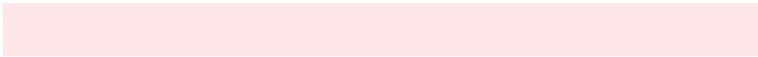


# Same Dimension

The Same Dimension uses a secret algorithm to generate beautiful new colors.



14930387



16770792



14932177



7563113



11730964



3342342

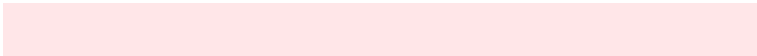


# Inverse Universe

The Inverse Universe completely reimagines the original color for something new.



14930387



16770792



13753571



7563113



11730964

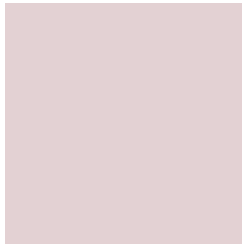


3342342



# Previews

## White Background



This preview shows how the Decimal color 14930387 looks on a white background.

## Color Contrast Check

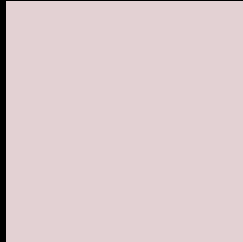
Large Text (above 18pt) WCAG AA × Fail

Any Text WCAG AA × Fail

Large Text (above 18pt) WCAG AAA × Fail

Any Text WCAG AAA × Fail

# Black Background



This preview shows how the Decimal color 14930387 looks on a black background.

## Color Contrast Check

Large Text (above 18pt) WCAG AA ✓ Pass

Any Text WCAG AA ✓ Pass

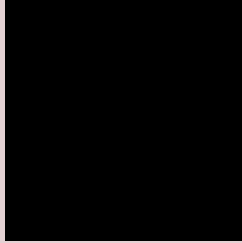
Large Text (above 18pt) WCAG AAA ✓ Pass

Any Text WCAG AAA ✓ Pass

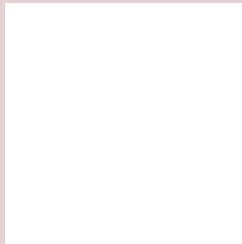
If you want to check with other color combinations, try the [Color Contrast Checker](#).



## Decimal 14930387 Background



This preview shows how black text looks on a background with the Decimal color 14930387.



This preview shows how white text looks on a background with the Decimal color 14930387.

# Color Blindness Simulation

Color vision deficiency is a very complex topic, and I could not describe the different causes any better than Wikipedia does, so if you want to learn more, you should check out their [article about color blindness](#).

## Dichromacy





**Tritanopia**  
15060959

# Trichromacy



**Original Color**  
14930387

**Protanomaly**  
14537684

**Deuteranomaly**  
15192020

**Tritanomaly**  
14995675

# Monochromacy



**Original Color**  
14930387

**Achromatopsia**  
14145495

**Achromatomaly**  
14407126

# CSS Examples

## Text

The CSS property to change the color of the text to Decimal 14930387 is called "color". The color property can be set on classes, ids or directly on the HTML element.

This example shows how text in the color #E3D1D3 looks like.

```
.text, #text, p{  
    color:#E3D1D3  
}
```

If you want to add a text shadow in that color use the text-shadow property, you can generate a text shadow directly with our [CSS Text Shadow Generator](#).

Here you see how black text with a 4 pixel #E3D1D3 colored shadow looks like.

```
.shadow{ text-shadow: 4px 4px 2px #E3D1D3
}
```

## Border

The CSS property to change the border of an element to Decimal 14930387 is called "border". The border property can be set on classes, ids or directly on the HTML element.

This example shows the color as border, it can be applied via the CSS property "border" or "border-color".

```
.border, #border, table{ border:4px solid
#E3D1D3 }
```

If only the border color should be changed use the property `border-color`.

```
.border{ border-color:#E3D1D3 }
```

If you want to add a box shadow in that color use:

Here you see how a box with a 4 pixel #E3D1D3 colored shadow looks like.

```
.boxshadow{ -moz-box-shadow:4px 4px 4px  
4px #E3D1D3; -webkit-box-shadow:4px 4px  
4px 4px #E3D1D3; box-shadow:4px 4px 4px  
4px #E3D1D3 }
```

# Background

The CSS property to change the background color of an element to Decimal 14930387 is called "background". The background property can be set on classes, ids or directly on the HTML element.

```
.background, #background, body{  
background:#E3D1D3 }
```

If only the background color should be changed can be used:

```
.background{ background-color:#E3D1D3 }
```

This example shows the color as background, it is applied via the CSS property "background".

To optimize and compress your CSS code, you can use our [online CSS compressor and optimizer](#) based on csstidy. If you want to create a linear or radial gradient as background or border, check our [CSS Gradient Generator](#).



Hey! You found this booklet interesting? Support Converting Colors with the new Membership Option!

The pro membership hides all ads, plus gives you double the colors in the color bucket, and more awesome pro features!

**[Learn more, Memberships starting at \\$2.50/m!](#)**

**Follow me  
on Twitter!**

@ConvertingColor