

Converting Colors

Decimal(14963314)

Have a look what the booklet for
Decimal(14963314) contains.

Decimal(14963314)	3
<i>Conversions</i>	4
<i>Details</i>	6
<i>Harmonies</i>	11
<i>Previews</i>	23
<i>Color Blindness Simulation</i>	26
<i>CSS Examples</i>	29

Color

Decimal(14963314)

Conversions

Conversions Part 1

Format	Color
Hex	E45272
RGB	228, 82, 114
RGB Percent	89%, 32%, 45%
CMY	0.1059, 0.6784, 0.5529
CMYK	0.00, 0.64, 0.50, 0.11
HSL	347°, 73%, 61%
HSV	347°, 64%, 89%
XYZ	38.0495, 23.7435, 18.4971
YIQ	129.3020, 76.7440, 40.9040

Conversions

Conversions Part 2

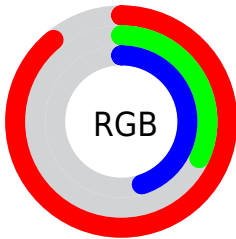
Format	Color
R_{YB}	228, 82, 114
Decimal	14963314
CIE Lab	55.83, 58.89, 13.08
CIE LCh	56, 60.325, 12.520
Yxy	23.7435, 0.4739, 0.2957
Android (android.graphics.Color)	4293153394 (0xFFE45272)
YUV	129.3020, -7.5439, 86.5581
Hunter-Lab	48.7273, 54.1118, 11.6023

Details

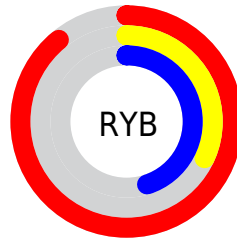
The Decimal color **14963314** is a dark color, and the websafe version is hex **CC3366**. The color can be described as middle muted rose. A complement of this color would be **5432516**, and the grayscale version is **8487297**.

A 20% lighter version of the original color is **16747174**, and **10947906** is the 20% darker color. If you saturate the color by 10%, you get **14957408**, and if you desaturate by 10%, it is **14969220**.

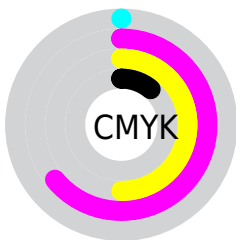
Distribution



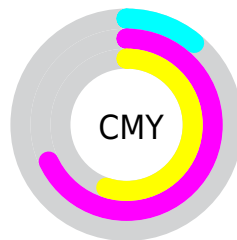
- Red (89%)
- Green (32%)
- Blue (45%)



- Red (89%)
- Yellow (32%)
- Blue (45%)



- Cyan (0%)
- Magenta (64%)
- Yellow (50%)
- Black (11%)



- Cyan (11%)
- Magenta (68%)
- Yellow (55%)

Brightness & Saturation Gradients

These gradients show how the Decimal color 14963314 changes by changing the brightness by 10 percent. The first figure shows a shift by +10% for each color and the second figure -10%.

Similar to the brightness gradients but the following saturation gradients show a change of the Decimal color 14963314 by changing the saturation by 10% instead.

 14963314

 14963314

16777215

 12923994

 16747174

 10947906

 16754625

 8978477

 16761821

 7077913

 16769273

 5177345

16776959

 3342338

 0

 14963314

 14963314

 14957408

 14969220

 14951502

 14975126

 14945853

 14980775

 14942258

 14986681

 14992587

 14998493

 15004399

 15007743

Harmonies

Analogous

The Analogous color harmony consists of three colors that are next to each other on the color wheel.



13916327



14963314



14180929

Triad

The Triadic color harmony groups three colors that are evenly spaced from another and form a triangle on the color wheel.



14963314



5281330



38122

Complementary

The Complementary color scheme is a pair of colors which are on the opposite of each other on the color wheel.



14963314



5432516

Split Complementary

Split-complementary colors differ from the complementary color scheme. The scheme consists of three colors, the original color and two neighbors of the complement color.



40140



14963314



40036

Square

The Square scheme is like the rectangle color scheme, but the four colors are evenly spaced on the color wheel.



14963314



9144839



40603



4097261

Rectangle

The Rectangle color scheme consists of four colors that form a rectangle on the color wheel.



14963314



12939556



40603



39138

Sweetspot

The Sweet Spot groups the original color and five complimentary colors.



14963314



16764889



12735204



8413801



0



8421504

Same Dimension

The Same Dimension uses a secret algorithm to generate beautiful new colors.



14963314



16726886



14973266



7563114



11730983



3342347

Inverse Universe

The Inverse Universe completely reimagines the original color for something new.



14963314



16726886



5422564



7563114



11730983



3342347

Previews

White Background



This preview shows how the Decimal color 14963314 looks on a white background.

Color Contrast Check

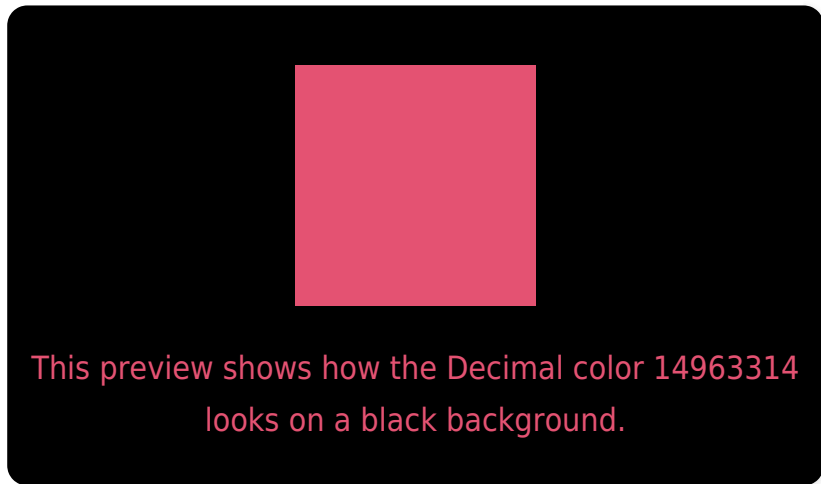
Large Text (above 18pt) WCAG AA ✓ Pass

Any Text WCAG AA × Fail

Large Text (above 18pt) WCAG AAA × Fail

Any Text WCAG AAA × Fail

Black Background



Color Contrast Check

Large Text (above 18pt) WCAG AA ✓ Pass

Any Text WCAG AA ✓ Pass

Large Text (above 18pt) WCAG AAA ✓ Pass

Any Text WCAG AAA × Fail

If you want to check with other color combinations, try the [Color Contrast Checker](#).

Decimal 14963314 Background



This preview shows how black text looks on a background with the Decimal color 14963314.

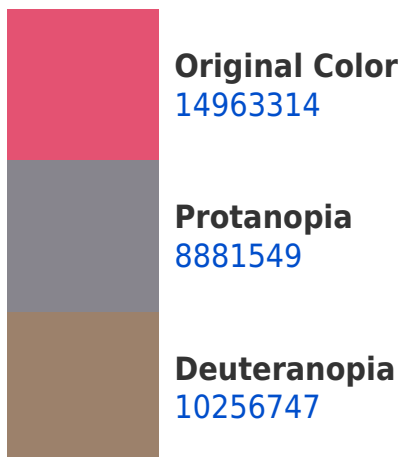


This preview shows how white text looks on a background with the Decimal color 14963314.

Color Blindness Simulation

Color vision deficiency is a very complex topic, and I could not describe the different causes any better than Wikipedia does, so if you want to learn more, you should check out their [article about color blindness](#).

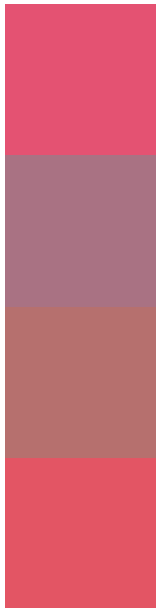
Dichromacy





Tritanopia
14898780

Trichromacy



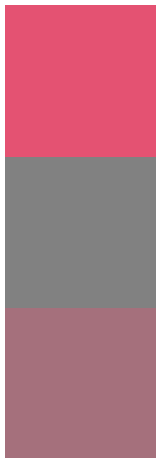
Original Color
14963314

Protanomaly
11104899

Deuteranomaly
11956334

Tritanomaly
14898532

Monochromacy



Original Color
14963314

Achromatopsia
8487297

Achromatomaly
10842236

CSS Examples

Text

The CSS property to change the color of the text to Decimal 14963314 is called "color". The color property can be set on classes, ids or directly on the HTML element.

This example shows how text in the color #E45272 looks like.

```
.text, #text, p{  
    color:#E45272  
}
```

If you want to add a text shadow in that color use the text-shadow property, you can generate a text shadow directly with our [CSS Text Shadow Generator](#).

Here you see how black text with a 4 pixel #E45272 colored shadow looks like.

```
.shadow{ text-shadow: 4px 4px 2px #E45272
}
```

Border

The CSS property to change the border of an element to Decimal 14963314 is called "border". The border property can be set on classes, ids or directly on the HTML element.

This example shows the color as border, it can be applied via the CSS property "border" or "border-color".

```
.border, #border, table{ border:4px solid
#E45272 }
```

If only the border color should be changed use the property `border-color`.

```
.border{ border-color:#E45272 }
```

If you want to add a box shadow in that color use:

Here you see how a box with a 4 pixel #E45272 colored shadow looks like.

```
.boxshadow{ -moz-box-shadow:4px 4px 4px  
4px #E45272; -webkit-box-shadow:4px 4px  
4px 4px #E45272; box-shadow:4px 4px 4px  
4px #E45272 }
```

Background

The CSS property to change the background color of an element to Decimal 14963314 is called "background". The background property can be set on classes, ids or directly on the HTML element.

```
.background, #background, body{  
background:#E45272 }
```

If only the background color should be changed can be used:

```
.background{ background-color:#E45272 }
```

This example shows the color as background, it is applied via the CSS property "background".

To optimize and compress your CSS code, you can use our [online CSS compressor and optimizer](#) based on csstidy. If you want to create a linear or radial gradient as background or border, check our [CSS Gradient Generator](#).

Hey! You found this booklet interesting? Support Converting Colors with the new Membership Option!

The pro membership hides all ads, plus gives you double the colors in the color bucket, and more awesome pro features!

[Learn more, Memberships starting at \\$2.50/m!](#)

**Follow me
on Twitter!**

@ConvertingColor