

Converting Colors

Decimal(14978458)

Have a look what the booklet for
Decimal(14978458) contains.

Decimal(14978458)	3
<i>Conversions</i>	4
<i>Details</i>	6
<i>Harmonies</i>	11
<i>Previews</i>	23
<i>Color Blindness Simulation</i>	26
<i>CSS Examples</i>	29

Color

Decimal(14978458)

Conversions

Conversions Part 1

Format	Color
Hex	E48D9A
RGB	228, 141, 154
RGB Percent	89%, 55%, 60%
CMY	0.1059, 0.4471, 0.3961
CMYK	0.00, 0.38, 0.32, 0.11
HSL	351°, 62%, 72%
HSV	351°, 38%, 89%
XYZ	47.3525, 37.8768, 35.3871
YIQ	168.4950, 47.6790, 22.4870

Conversions

Conversions Part 2

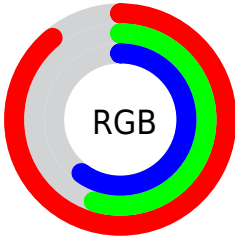
Format	Color
R _Y B	228, 141, 154
Decimal	14978458
CIE Lab	67.93, 34.61, 7.20
CIE LCh	68, 35.349, 11.752
Yxy	37.8768, 0.3926, 0.3140
Android (android.graphics.Color)	4293168538 (0xFFE48D9A)
YUV	168.4950, -7.1460, 52.1859
Hunter-Lab	61.5442, 29.6369, 8.9900

Details

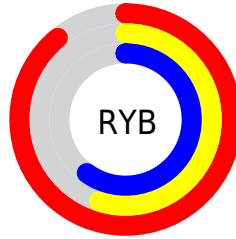
The Decimal color **14978458** is a light color, and the websafe version is hex **FF9999**. A complement of this color would be **9299159**, and the grayscale version is **11119017**.

A 20% lighter version of the original color is **16762064**, and **11164007** is the 20% darker color. If you saturate the color by 10%, you get **14972551**, and if you desaturate by 10%, it is **14984365**.

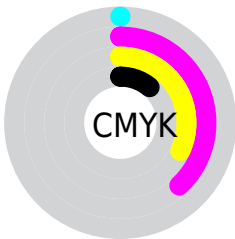
Distribution



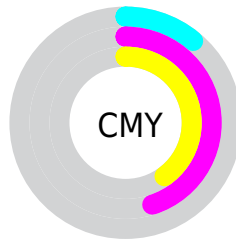
- Red (89%)
- Green (55%)
- Blue (60%)



- Red (89%)
- Yellow (55%)
- Blue (60%)



- Cyan (0%)
- Magenta (38%)
- Yellow (32%)
- Black (11%)



- Cyan (11%)
- Magenta (45%)
- Yellow (40%)

Brightness & Saturation Gradients

These gradients show how the Decimal color 14978458 changes by changing the brightness by 10 percent. The first figure shows a shift by +10% for each color and the second figure -10%.

Similar to the brightness gradients but the following saturation gradients show a change of the Decimal color 14978458 by changing the saturation by 10% instead.


 14978458

 14978458

16777215

 13071232

 16762064

 11164007

 16769261

 9322575

 16776703

 7546936

 5770531

 4063245

 2555905

 0

 14978458

 14978458

■ 14972551

■ 14984365

■ 14966643

■ 14990273

■ 14960992

■ 14995924

■ 14955084

■ 15001832

■ 14949177

■ 15007739

■ 14943270

■ 15007743

■ 14942242

Harmonies

Analogous

The Analogous color harmony consists of three colors that are next to each other on the color wheel.



14192570



14978458



14652285

Triad

The Triadic color harmony groups three colors that are evenly spaced from another and form a triangle on the color wheel.



14978458



9154677



5746401

Complementary

The Complementary color scheme is a pair of colors which are on the opposite of each other on the color wheel.



14978458



9299159

Split Complementary

Split-complementary colors differ from the complementary color scheme. The scheme consists of three colors, the original color and two neighbors of the complement color.



2864591



14978458



6600081

Square

The Square scheme is like the rectangle color scheme, but the four colors are evenly spaced on the color wheel.



14978458



11446374



3848113



9217252

Rectangle

The Rectangle color scheme consists of four colors that form a rectangle on the color wheel.



14978458



13867374



3848113



4633053

Sweetspot

The Sweet Spot groups the original color and five complimentary colors.



14978458



16770023



14126564



8417137



0



8421504

Same Dimension

The Same Dimension uses a secret algorithm to generate beautiful new colors.



14978458



16747163



14986125



7563113



11730971



3342344

Inverse Universe

The Inverse Universe completely reimagines the original color for something new.



14978458



16747163



9291492



7563113



11730971



3342344

Previews

White Background



This preview shows how the Decimal color 14978458 looks on a white background.

Color Contrast Check

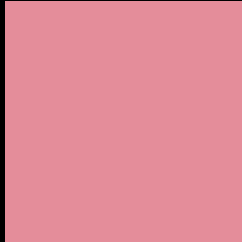
Large Text (above 18pt) WCAG AA × Fail

Any Text WCAG AA × Fail

Large Text (above 18pt) WCAG AAA × Fail

Any Text WCAG AAA × Fail

Black Background



This preview shows how the Decimal color 14978458 looks on a black background.

Color Contrast Check

Large Text (above 18pt) WCAG AA ✓ Pass

Any Text WCAG AA ✓ Pass

Large Text (above 18pt) WCAG AAA ✓ Pass

Any Text WCAG AAA ✓ Pass

If you want to check with other color combinations, try the [Color Contrast Checker](#).

Decimal 14978458 Background



This preview shows how black text looks on a background with the Decimal color 14978458.

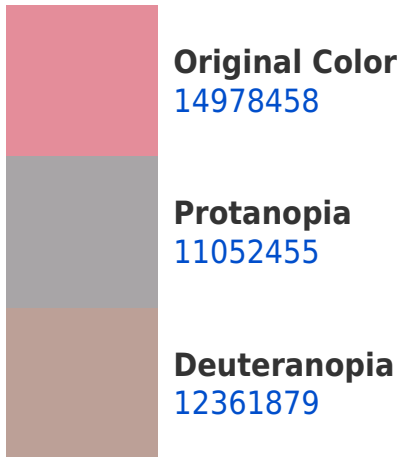


This preview shows how white text looks on a background with the Decimal color 14978458.

Color Blindness Simulation

Color vision deficiency is a very complex topic, and I could not describe the different causes any better than Wikipedia does, so if you want to learn more, you should check out their [article about color blindness](#).

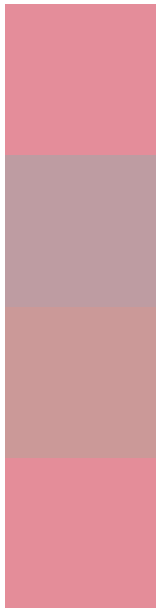
Dichromacy





Tritanopia
14978456

Trichromacy



Original Color
14978458

Protanomaly
12491938

Deuteranomaly
13343128

Tritanomaly
14978457

Monochromacy



Original Color
14978458

Achromatopsia
11053224

Achromatomaly
12492451

CSS Examples

Text

The CSS property to change the color of the text to Decimal 14978458 is called "color". The color property can be set on classes, ids or directly on the HTML element.

This example shows how text in the color #E48D9A looks like.

```
.text, #text, p{  
    color:#E48D9A  
}
```

If you want to add a text shadow in that color use the text-shadow property, you can generate a text shadow directly with our [CSS Text Shadow Generator](#).

Here you see how black text with a 4 pixel #E48D9A colored shadow looks like.

```
.shadow{ text-shadow: 4px 4px 2px #E48D9A
}
```

Border

The CSS property to change the border of an element to Decimal 14978458 is called "border". The border property can be set on classes, ids or directly on the HTML element.

This example shows the color as border, it can be applied via the CSS property "border" or "border-color".

```
.border, #border, table{ border:4px solid
#E48D9A }
```

If only the border color should be changed use the property `border-color`.

```
.border{ border-color:#E48D9A }
```

If you want to add a box shadow in that color use:

Here you see how a box with a 4 pixel #E48D9A colored shadow looks like.

```
.boxshadow{ -moz-box-shadow:4px 4px 4px  
4px #E48D9A; -webkit-box-shadow:4px 4px  
4px 4px #E48D9A; box-shadow:4px 4px 4px  
4px #E48D9A }
```

Background

The CSS property to change the background color of an element to Decimal 14978458 is called "background". The background property can be set on classes, ids or directly on the HTML element.

```
.background, #background, body{  
background:#E48D9A }
```

If only the background color should be changed can be used:

```
.background{ background-color:#E48D9A }
```

This example shows the color as background, it is applied via the CSS property "background".

To optimize and compress your CSS code, you can use our [online CSS compressor and optimizer](#) based on csstidy. If you want to create a linear or radial gradient as background or border, check our [CSS Gradient Generator](#).

Hey! You found this booklet interesting? Support Converting Colors with the new Membership Option!

The pro membership hides all ads, plus gives you double the colors in the color bucket, and more awesome pro features!

[Learn more, Memberships starting at \\$2.50/m!](#)

**Follow me
on Twitter!**

@ConvertingColor