

# Converting Colors

Decimal(14981037)

Have a look what the booklet for  
Decimal(14981037) contains.

<b>Decimal(14981037)</b> .....	3
<i><b>Conversions</b></i> .....	4
<i><b>Details</b></i> .....	6
<i><b>Harmonies</b></i> .....	11
<i><b>Previews</b></i> .....	23
<i><b>Color Blindness Simulation</b></i> .....	26
<i><b>CSS Examples</b></i> .....	29

# **Color**

**Decimal(14981037)**

# Conversions

## Conversions Part 1

Format	Color
Hex	E497AD
RGB	228, 151, 173
RGB Percent	89%, 59%, 68%
CMY	0.1059, 0.4078, 0.3216
CMYK	0.00, 0.34, 0.24, 0.11
HSL	343°, 59%, 74%
HSV	343°, 34%, 89%
XYZ	50.6043, 41.6443, 44.9062
YIQ	176.5310, 38.8300, 23.1660

# Conversions

## Conversions Part 2

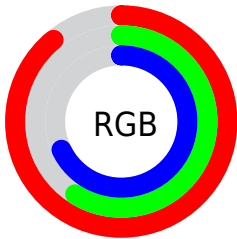
Format	Color
R <sub>Y</sub> B	228, 151, 173
Decimal	14981037
CIE Lab	70.63, 31.86, 0.48
CIE LCh	71, 31.867, 0.866
Yxy	41.6443, 0.3690, 0.3036
Android (android.graphics.Color)	4293171117 (0xFFE497AD)
YUV	176.5310, -1.7408, 45.1383
Hunter-Lab	64.5324, 27.0425, 3.9146

# Details

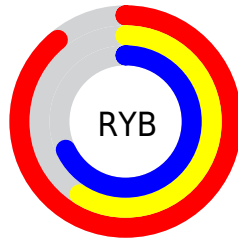
The Decimal color **14981037** is a light color, and the websafe version is hex **CC9999**. A complement of this color would be **9954510**, and the grayscale version is **11645361**.

A 20% lighter version of the original color is **16764644**, and **11232121** is the 20% darker color. If you saturate the color by 10%, you get **14975133**, and if you desaturate by 10%, it is **14986941**.

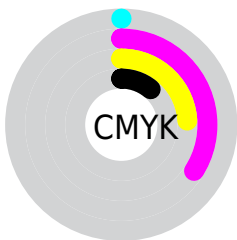
# Distribution



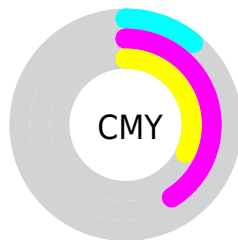
- Red (89%)
- Green (59%)
- Blue (68%)



- Red (89%)
- Yellow (59%)
- Blue (68%)



- Cyan (0%)
- Magenta (34%)
- Yellow (24%)
- Black (11%)



- Cyan (11%)
- Magenta (41%)
- Yellow (32%)

# Brightness & Saturation Gradients

These gradients show how the Decimal color 14981037 changes by changing the brightness by 10 percent. The first figure shows a shift by +10% for each color and the second figure -10%.

Similar to the brightness gradients but the following saturation gradients show a change of the Decimal color 14981037 by changing the saturation by 10% instead.



 14981037

 14981037

16777215

 13073810

 16764644

 11232121

 16771839

 9390688

 7680584

 5904946

 4259869

 2949123

 0

 14981037

 14981037

■ 14975133

■ 14986941

■ 14969228

■ 14992846

■ 14963580

■ 14998494

■ 14957676

■ 15004398

■ 14951772

■ 15007742

■ 14945867

■ 15007743

■ 14942273

# Harmonies

## Analogous

The Analogous color harmony consists of three colors that are next to each other on the color wheel.



13802697



14981037



15047056

# Triad

The Triadic color harmony groups three colors that are evenly spaced from another and form a triangle on the color wheel.



14981037



10597498



6207455

# Complementary

The Complementary color scheme is a pair of colors which are on the opposite of each other on the color wheel.



14981037



9954510

# Split Complementary

Split-complementary colors differ from the complementary color scheme. The scheme consists of three colors, the original color and two neighbors of the complement color.



5029065



14981037



8370832

# Square

The Square scheme is like the rectangle color scheme, but the four colors are evenly spaced on the color wheel.



14981037



12626803



6208941



8892390

# Rectangle

The Rectangle color scheme consists of four colors that form a rectangle on the color wheel.



14981037



14589569



6208941



5552601



# Sweetspot

The Sweet Spot groups the original color and five complimentary colors.



14981037



16770797



13473764



8417397



0



8421504



# Same Dimension

The Same Dimension uses a secret algorithm to generate beautiful new colors.



14981037



16750260



14984855



7563115



11730995



3342351



# Inverse Universe

The Inverse Universe completely reimagines the original color for something new.



14981037



16750260



9950692



7563115



11730995



3342351



# Previews

## White Background



This preview shows how the Decimal color 14981037 looks on a white background.

## Color Contrast Check

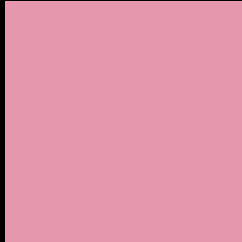
Large Text (above 18pt) WCAG AA × Fail

Any Text WCAG AA × Fail

Large Text (above 18pt) WCAG AAA × Fail

Any Text WCAG AAA × Fail

# Black Background



This preview shows how the Decimal color 14981037 looks on a black background.

## Color Contrast Check

Large Text (above 18pt) WCAG AA ✓ Pass

Any Text WCAG AA ✓ Pass

Large Text (above 18pt) WCAG AAA ✓ Pass

Any Text WCAG AAA ✓ Pass

If you want to check with other color combinations, try the [Color Contrast Checker](#).



## Decimal 14981037 Background



This preview shows how black text looks on a background with the Decimal color 14981037.



This preview shows how white text looks on a background with the Decimal color 14981037.

# Color Blindness Simulation

Color vision deficiency is a very complex topic, and I could not describe the different causes any better than Wikipedia does, so if you want to learn more, you should check out their [article about color blindness](#).


## Dichromacy



**Original Color**  
14981037

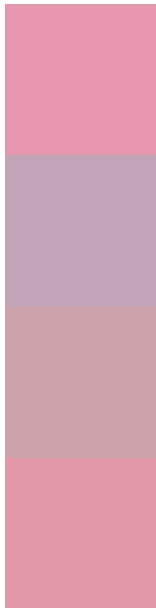
**Protanopia**  
11381945

**Deuteranopia**  
12560554



**Tritanopia**  
14916004

# Trichromacy



**Original Color**  
14981037

**Protanomaly**  
12690613

**Deuteranomaly**  
13410987

**Tritanomaly**  
14915751

# Monochromacy



**Original Color**  
14981037

**Achromatopsia**  
11645361

**Achromatomaly**  
12888240

# CSS Examples

## Text

The CSS property to change the color of the text to Decimal 14981037 is called "color". The color property can be set on classes, ids or directly on the HTML element.

This example shows how text in the color #E497AD looks like.

```
.text, #text, p{  
    color:#E497AD  
}
```

If you want to add a text shadow in that color use the text-shadow property, you can generate a text shadow directly with our [CSS Text Shadow Generator](#).

Here you see how black text with a 4 pixel #E497AD colored shadow looks like.

```
.shadow{ text-shadow: 4px 4px 2px #E497AD
}
```

## Border

The CSS property to change the border of an element to Decimal 14981037 is called "border". The border property can be set on classes, ids or directly on the HTML element.

This example shows the color as border, it can be applied via the CSS property "border" or "border-color".

```
.border, #border, table{ border:4px solid
#E497AD }
```

If only the border color should be changed use the property `border-color`.

```
.border{ border-color:#E497AD }
```

If you want to add a box shadow in that color use:

Here you see how a box with a 4 pixel #E497AD colored shadow looks like.

```
.boxshadow{ -moz-box-shadow:4px 4px 4px  
4px #E497AD; -webkit-box-shadow:4px 4px  
4px 4px #E497AD; box-shadow:4px 4px 4px  
4px #E497AD }
```

# Background

The CSS property to change the background color of an element to Decimal 14981037 is called "background". The background property can be set on classes, ids or directly on the HTML element.

```
.background, #background, body{  
background:#E497AD }
```

If only the background color should be changed can be used:

```
.background{ background-color:#E497AD }
```

This example shows the color as background, it is applied via the CSS property "background".

To optimize and compress your CSS code, you can use our [online CSS compressor and optimizer](#) based on csstidy. If you want to create a linear or radial gradient as background or border, check our [CSS Gradient Generator](#).



Hey! You found this booklet interesting? Support Converting Colors with the new Membership Option!

The pro membership hides all ads, plus gives you double the colors in the color bucket, and more awesome pro features!

**[Learn more, Memberships starting at \\$2.50/m!](#)**

**Follow me  
on Twitter!**

@ConvertingColor