

Converting Colors

Decimal(14981283)

Have a look what the booklet for
Decimal(14981283) contains.

Decimal(14981283)	3
<i>Conversions</i>	4
<i>Details</i>	6
<i>Harmonies</i>	11
<i>Previews</i>	23
<i>Color Blindness Simulation</i>	26
<i>CSS Examples</i>	29

Color

Decimal(14981283)

Conversions

Conversions Part 1

Format	Color
Hex	E498A3
RGB	228, 152, 163
RGB Percent	89%, 60%, 64%
CMY	0.1059, 0.4039, 0.3608
CMYK	0.00, 0.33, 0.29, 0.11
HSL	351°, 58%, 75%
HSV	351°, 33%, 89%
XYZ	49.8340, 41.5948, 40.0524
YIQ	175.9780, 41.7650, 19.5330

Conversions

Conversions Part 2

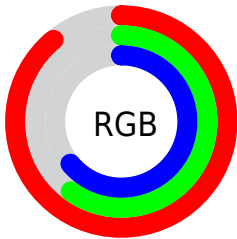
Format	Color
R_{YB}	228, 152, 163
Decimal	14981283
CIE _{Lab}	70.59, 29.94, 5.99
CIE _{LCh}	71, 30.538, 11.316
Yxy	41.5948, 0.3790, 0.3164
Android (android.graphics.Color)	4293171363 (0xFFE498A3)
YUV	175.9780, -6.3982, 45.6233
Hunter-Lab	64.4940, 25.0609, 8.3253

Details

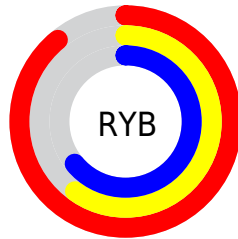
The Decimal color **14981283** is a light color, and the websafe version is hex **CC9999**. A complement of this color would be **10020057**, and the grayscale version is **11579568**.

A 20% lighter version of the original color is **16764890**, and **11232367** is the 20% darker color. If you saturate the color by 10%, you get **14975376**, and if you desaturate by 10%, it is **14987191**.

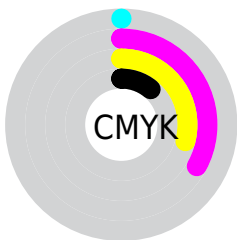
Distribution



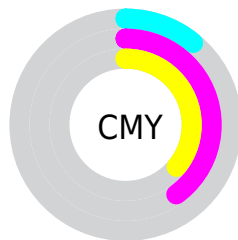
- Red (89%)
- Green (60%)
- Blue (64%)



- Red (89%)
- Yellow (60%)
- Blue (64%)



- Cyan (0%)
- Magenta (33%)
- Yellow (29%)
- Black (11%)



- Cyan (11%)
- Magenta (40%)
- Yellow (36%)

Brightness & Saturation Gradients

These gradients show how the Decimal color 14981283 changes by changing the brightness by 10 percent. The first figure shows a shift by +10% for each color and the second figure -10%.

Similar to the brightness gradients but the following saturation gradients show a change of the Decimal color 14981283 by changing the saturation by 10% instead.

 14981283

 14981283

16777215

 13074057

 16764890

 11232367

 16772086

 9390935

 7615296

 5905194

 4194838

 2883585

 0

 14981283

 14981283

 14975376

 14987191

 14969468

 14993098

 14963817

 14998750

 14957909

 15004657

 14952002

 15007743

 14946094

 14942241

Harmonies

Analogous

The Analogous color harmony consists of three colors that are next to each other on the color wheel.



14195391



14981283



14720137

Triad

The Triadic color harmony groups three colors that are evenly spaced from another and form a triangle on the color wheel.



14981283



9942658



7320801

Complementary

The Complementary color scheme is a pair of colors which are on the opposite of each other on the color wheel.



14981283



10020057

Split Complementary

Split-complementary colors differ from the complementary color scheme. The scheme consists of three colors, the original color and two neighbors of the complement color.



5552848



14981283



7781274

Square

The Square scheme is like the rectangle color scheme, but the four colors are evenly spaced on the color wheel.



14981283



11972214



5946551



10005731

Rectangle

The Rectangle color scheme consists of four colors that form a rectangle on the color wheel.



14981283



14066301



5946551



6600669

Sweetspot

The Sweet Spot groups the original color and five complimentary colors.



14981283



16770793



14260452



8417394



0



8421504

Same Dimension

The Same Dimension uses a secret algorithm to generate beautiful new colors.



14981283



16751016



14988184



7563113



11730970



3342343

Inverse Universe

The Inverse Universe completely reimagines the original color for something new.



14981283



16751016



10013156



7563113



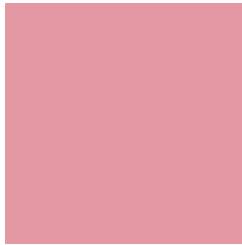
11730970



3342343

Previews

White Background



This preview shows how the Decimal color 14981283 looks on a white background.

Color Contrast Check

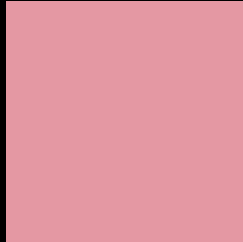
Large Text (above 18pt) WCAG AA × Fail

Any Text WCAG AA × Fail

Large Text (above 18pt) WCAG AAA × Fail

Any Text WCAG AAA × Fail

Black Background



This preview shows how the Decimal color 14981283 looks on a black background.

Color Contrast Check

Large Text (above 18pt) WCAG AA ✓ Pass

Any Text WCAG AA ✓ Pass

Large Text (above 18pt) WCAG AAA ✓ Pass

Any Text WCAG AAA ✓ Pass

If you want to check with other color combinations, try the [Color Contrast Checker](#).

Decimal 14981283 Background



This preview shows how black text looks on a background with the Decimal color 14981283.



This preview shows how white text looks on a background with the Decimal color 14981283.

Color Blindness Simulation

Color vision deficiency is a very complex topic, and I could not describe the different causes any better than Wikipedia does, so if you want to learn more, you should check out their [article about color blindness](#).


Dichromacy



Original Color
14981283

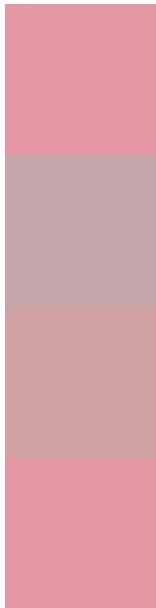
Protanopia
11578542

Deuteranopia
12822432



Tritanopia
14981283

Trichromacy



Original Color
14981283

Protanomaly
12821930

Deuteranomaly
13607585

Tritanomaly
14981283

Monochromacy



Original Color
14981283

Achromatopsia
11579568

Achromatomaly
12822443

CSS Examples

Text

The CSS property to change the color of the text to Decimal 14981283 is called "color". The color property can be set on classes, ids or directly on the HTML element.

This example shows how text in the color #E498A3 looks like.

```
.text, #text, p{  
  color:#E498A3  
}
```

If you want to add a text shadow in that color use the text-shadow property, you can generate a text shadow directly with our [CSS Text Shadow Generator](#).

Here you see how black text with a 4 pixel #E498A3 colored shadow looks like.

```
.shadow{ text-shadow: 4px 4px 2px #E498A3
}
```

Border

The CSS property to change the border of an element to Decimal 14981283 is called "border". The border property can be set on classes, ids or directly on the HTML element.

This example shows the color as border, it can be applied via the CSS property "border" or "border-color".

```
.border, #border, table{ border:4px solid
#E498A3 }
```

If only the border color should be changed use the property `border-color`.

```
.border{ border-color:#E498A3 }
```

If you want to add a box shadow in that color use:

Here you see how a box with a 4 pixel #E498A3 colored shadow looks like.

```
.boxshadow{ -moz-box-shadow:4px 4px 4px  
4px #E498A3; -webkit-box-shadow:4px 4px  
4px 4px #E498A3; box-shadow:4px 4px 4px  
4px #E498A3 }
```

Background

The CSS property to change the background color of an element to Decimal 14981283 is called "background". The background property can be set on classes, ids or directly on the HTML element.

```
.background, #background, body{  
background:#E498A3 }
```

If only the background color should be changed can be used:

```
.background{ background-color:#E498A3 }
```

This example shows the color as background, it is applied via the CSS property "background".

To optimize and compress your CSS code, you can use our [online CSS compressor and optimizer](#) based on csstidy. If you want to create a linear or radial gradient as background or border, check our [CSS Gradient Generator](#).

Hey! You found this booklet interesting? Support Converting Colors with the new Membership Option!

The pro membership hides all ads, plus gives you double the colors in the color bucket, and more awesome pro features!

[Learn more, Memberships starting at \\$2.50/m!](#)

**Follow me
on Twitter!**

@ConvertingColor