

# Converting Colors

Decimal(14984379)

Have a look what the booklet for  
Decimal(14984379) contains.

<b>Decimal(14984379)</b> .....	3
<i><b>Conversions</b></i> .....	4
<i><b>Details</b></i> .....	6
<i><b>Harmonies</b></i> .....	11
<i><b>Previews</b></i> .....	23
<i><b>Color Blindness Simulation</b></i> .....	26
<i><b>CSS Examples</b></i> .....	29

# **Color**

**Decimal(14984379)**

# Conversions

## Conversions Part 1

Format	Color
Hex	E4A4BB
RGB	228, 164, 187
RGB Percent	89%, 64%, 73%
CMY	0.1059, 0.3569, 0.2667
CMYK	0.00, 0.28, 0.18, 0.11
HSL	338°, 54%, 77%
HSV	338°, 28%, 89%
XYZ	54.2400, 46.6328, 53.1560
YIQ	185.7580, 30.7610, 20.7210

# Conversions

## Conversions Part 2

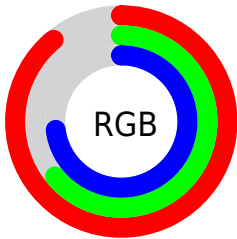
Format	Color
R <sub>Y</sub> B	228, 164, 187
Decimal	14984379
CIE Lab	73.95, 26.99, -2.39
CIE LCh	74, 27.100, 354.946
Yxy	46.6328, 0.3521, 0.3028
Android (android.graphics.Color)	4293174459 (0xFFE4A4BB)
YUV	185.7580, 0.6123, 37.0462
Hunter-Lab	68.2882, 22.2749, 1.6500

# Details

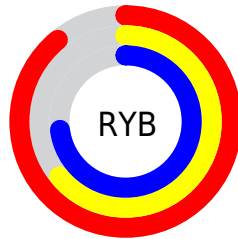
The Decimal color **14984379** is a light color, and the websafe version is hex **CC9999**. A complement of this color would be **10806477**, and the grayscale version is **12237498**.

A 20% lighter version of the original color is **16767987**, and **11300998** is the 20% darker color. If you saturate the color by 10%, you get **14978476**, and if you desaturate by 10%, it is **14990282**.

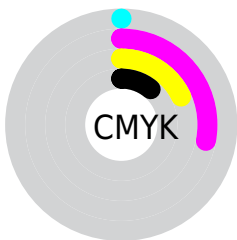
# Distribution



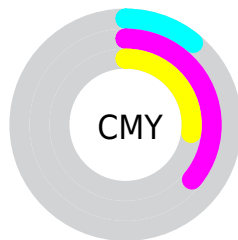
- Red (89%)
- Green (64%)
- Blue (73%)



- Red (89%)
- Yellow (64%)
- Blue (73%)



- Cyan (0%)
- Magenta (28%)
- Yellow (18%)
- Black (11%)



- Cyan (11%)
- Magenta (36%)
- Yellow (27%)

# Brightness & Saturation Gradients

These gradients show how the Decimal color 14984379 changes by changing the brightness by 10 percent. The first figure shows a shift by +10% for each color and the second figure -10%.

Similar to the brightness gradients but the following saturation gradients show a change of the Decimal color 14984379 by changing the saturation by 10% instead.



 14984379

 14984379

16777215

 13076896

 16767987

 11300998

 16775423

 9459565

 7749204

 6039357

 4395048

 2883603

 131072

 0

 14984379

 14984379

 14978476

 14990282

 14972574

 14996184

 14966927

 15001831

 14961025

 15007733

 14955122

 15007743

 14949219

 14943317

 14942290

# Harmonies

## Analogous

The Analogous color harmony consists of three colors that are next to each other on the color wheel.



13806035



14984379



15246754

# Triad

The Triadic color harmony groups three colors that are evenly spaced from another and form a triangle on the color wheel.



14984379



11713416



7651550

# Complementary

The Complementary color scheme is a pair of colors which are on the opposite of each other on the color wheel.



14984379



10806477

# Split Complementary

Split-complementary colors differ from the complementary color scheme. The scheme consists of three colors, the original color and two neighbors of the complement color.



7128010



14984379



9814425

# Square

The Square scheme is like the rectangle color scheme, but the four colors are evenly spaced on the color wheel.



14984379



13415300



8111281



9550311

# Rectangle

The Rectangle color scheme consists of four colors that form a rectangle on the color wheel.



14984379



14985364



8111281



7324120



# Sweetspot

The Sweet Spot groups the original color and five complimentary colors.



14984379



16772082



13477092



8418167



0



8421504



# Same Dimension

The Same Dimension uses a secret algorithm to generate beautiful new colors.



14984379



16754887



14986660



7563115



11731008



3342354



# Inverse Universe

The Inverse Universe completely reimagines the original color for something new.



14984379



16754887



10804196



7563115



11731008

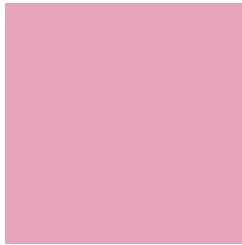


3342354



# Previews

## White Background



This preview shows how the Decimal color 14984379 looks on a white background.

## Color Contrast Check

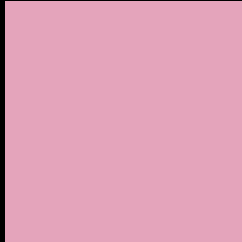
Large Text (above 18pt) WCAG AA × Fail

Any Text WCAG AA × Fail

Large Text (above 18pt) WCAG AAA × Fail

Any Text WCAG AAA × Fail

# Black Background



This preview shows how the Decimal color 14984379 looks on a black background.

## Color Contrast Check

Large Text (above 18pt) WCAG AA ✓ Pass

Any Text WCAG AA ✓ Pass

Large Text (above 18pt) WCAG AAA ✓ Pass

Any Text WCAG AAA ✓ Pass

If you want to check with other color combinations, try the [Color Contrast Checker](#).



## Decimal 14984379 Background



This preview shows how black text looks on a background with the Decimal color 14984379.



This preview shows how white text looks on a background with the Decimal color 14984379.

# Color Blindness Simulation

Color vision deficiency is a very complex topic, and I could not describe the different causes any better than Wikipedia does, so if you want to learn more, you should check out their [article about color blindness](#).

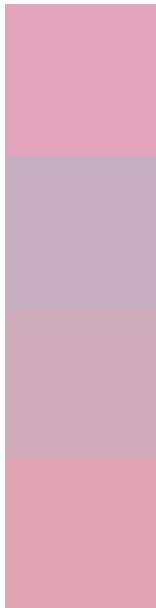
## Dichromacy





**Tritanopia**  
14919090

# Trichromacy



**Original Color**  
14984379

**Protanomaly**  
13021121

**Deuteranomaly**  
13741242

**Tritanomaly**  
14919093

# Monochromacy



**Original Color**  
14984379

**Achromatopsia**  
12237498

**Achromatomaly**  
13218490

# CSS Examples

## Text

The CSS property to change the color of the text to Decimal 14984379 is called "color". The color property can be set on classes, ids or directly on the HTML element.

This example shows how text in the color #E4A4BB looks like.

```
.text, #text, p{  
    color:#E4A4BB  
}
```

If you want to add a text shadow in that color use the text-shadow property, you can generate a text shadow directly with our [CSS Text Shadow Generator](#).

Here you see how black text with a 4 pixel #E4A4BB colored shadow looks like.

```
.shadow{ text-shadow: 4px 4px 2px #E4A4BB  
}
```

## Border

The CSS property to change the border of an element to Decimal 14984379 is called "border". The border property can be set on classes, ids or directly on the HTML element.

This example shows the color as border, it can be applied via the CSS property "border" or "border-color".

```
.border, #border, table{ border:4px solid  
#E4A4BB }
```

If only the border color should be changed use the property `border-color`.

```
.border{ border-color:#E4A4BB }
```

If you want to add a box shadow in that color use:

Here you see how a box with a 4 pixel #E4A4BB colored shadow looks like.

```
.boxshadow{ -moz-box-shadow:4px 4px 4px  
4px #E4A4BB; -webkit-box-shadow:4px 4px  
4px 4px #E4A4BB; box-shadow:4px 4px 4px  
4px #E4A4BB }
```

# Background

The CSS property to change the background color of an element to Decimal 14984379 is called "background". The background property can be set on classes, ids or directly on the HTML element.

```
.background, #background, body{  
background:#E4A4BB }
```

If only the background color should be changed can be used:

```
.background{ background-color:#E4A4BB }
```

This example shows the color as background, it is applied via the CSS property "background".

To optimize and compress your CSS code, you can use our [online CSS compressor and optimizer](#) based on csstidy. If you want to create a linear or radial gradient as background or border, check our [CSS Gradient Generator](#).



Hey! You found this booklet interesting? Support Converting Colors with the new Membership Option!

The pro membership hides all ads, plus gives you double the colors in the color bucket, and more awesome pro features!

**[Learn more, Memberships starting at \\$2.50/m!](#)**

**Follow me  
on Twitter!**

@ConvertingColor