

Converting Colors

Decimal(14987692)

Have a look what the booklet for
Decimal(14987692) contains.

Decimal(14987692)	3
<i>Conversions</i>	4
<i>Details</i>	6
<i>Harmonies</i>	11
<i>Previews</i>	23
<i>Color Blindness Simulation</i>	26
<i>CSS Examples</i>	29

Color

Decimal(14987692)

Conversions

Conversions Part 1

Format	Color
Hex	E4B1AC
RGB	228, 177, 172
RGB Percent	89%, 69%, 67%
CMY	0.1059, 0.3059, 0.3255
CMYK	0.00, 0.22, 0.25, 0.11
HSL	5°, 51%, 78%
HSV	5°, 25%, 89%
XYZ	55.1634, 50.9168, 45.9502
YIQ	191.6790, 32.0010, 9.2570

Conversions

Conversions Part 2

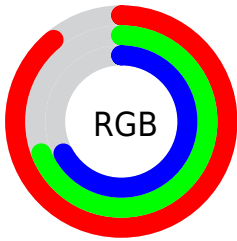
Format	Color
R _Y B	228, 177, 172
Decimal	14987692
CIE Lab	76.63, 17.81, 9.69
CIE LCh	77, 20.272, 28.548
Yxy	50.9168, 0.3628, 0.3349
Android (android.graphics.Color)	4293177772 (0xFFE4B1AC)
YUV	191.6790, -9.7017, 31.8535
Hunter-Lab	71.3560, 13.1206, 11.7690

Details

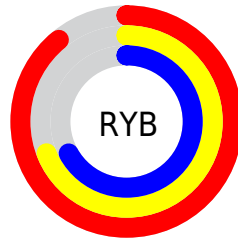
The Decimal color **14987692** is a light color, and the websafe version is hex **CC9999**. A complement of this color would be **11329508**, and the grayscale version is **12632256**.

A 20% lighter version of the original color is **16771555**, and **11304056** is the 20% darker color. If you saturate the color by 10%, you get **14982293**, and if you desaturate by 10%, it is **14993091**.

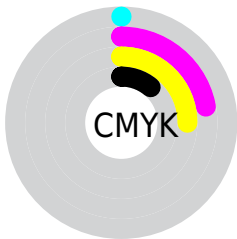
Distribution



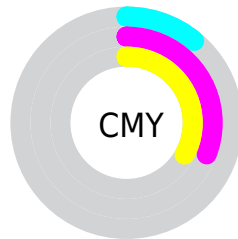
- Red (89%)
- Green (69%)
- Blue (67%)



- Red (89%)
- Yellow (69%)
- Blue (67%)



- Cyan (0%)
- Magenta (22%)
- Yellow (25%)
- Black (11%)



- Cyan (11%)
- Magenta (31%)
- Yellow (33%)

Brightness & Saturation Gradients

These gradients show how the Decimal color 14987692 changes by changing the brightness by 10 percent. The first figure shows a shift by +10% for each color and the second figure -10%.

Similar to the brightness gradients but the following saturation gradients show a change of the Decimal color 14987692 by changing the saturation by 10% instead.

 14987692

 14987692

16777215

 13080209

 16771555

 11304056

 9462623

 7752519

 6042673

 4398620

 2951169

 589824

 0

 14987692

 14987692

 14982293

 14993091

 14976894

 14998490

 14971752

 15003632

 14966353

 15007743

 14960954

 14955555

 14950412

 14947328

Harmonies

Analogous

The Analogous color harmony consists of three colors that are next to each other on the color wheel.



14856383



14987692



14464414

Triad

The Triadic color harmony groups three colors that are evenly spaced from another and form a triangle on the color wheel.



14987692



10733225



10993634

Complementary

The Complementary color scheme is a pair of colors which are on the opposite of each other on the color wheel.



14987692



11329508

Split Complementary

Split-complementary colors differ from the complementary color scheme. The scheme consists of three colors, the original color and two neighbors of the complement color.



9618652



14987692



9554107

Square

The Square scheme is like the rectangle color scheme, but the four colors are evenly spaced on the color wheel.



14987692



12108188



9095118



12564958

Rectangle

The Rectangle color scheme consists of four colors that form a rectangle on the color wheel.



14987692



13875609



9095118



10469857

Sweetspot

The Sweet Spot groups the original color and five complimentary colors.



14987692



16773101



14986463



8418933



0



8421504

Same Dimension

The Same Dimension uses a secret algorithm to generate beautiful new colors.



14987692



16759989



14994860



7563367



11735040



3343616

Inverse Universe

The Inverse Universe completely reimagines the original color for something new.



11329508



11925759



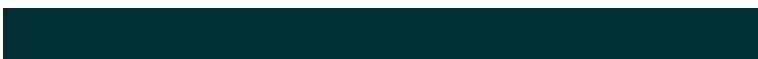
11322340



6779507



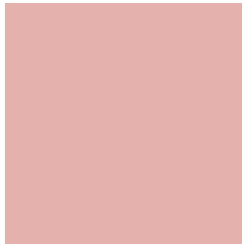
41907



11827

Previews

White Background



This preview shows how the Decimal color 14987692 looks on a white background.

Color Contrast Check

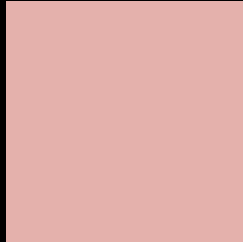
Large Text (above 18pt) WCAG AA × Fail

Any Text WCAG AA × Fail

Large Text (above 18pt) WCAG AAA × Fail

Any Text WCAG AAA × Fail

Black Background



This preview shows how the Decimal color 14987692 looks on a black background.

Color Contrast Check

Large Text (above 18pt) WCAG AA ✓ Pass

Any Text WCAG AA ✓ Pass

Large Text (above 18pt) WCAG AAA ✓ Pass

Any Text WCAG AAA ✓ Pass

If you want to check with other color combinations, try the [Color Contrast Checker](#).

Decimal 14987692 Background



This preview shows how black text looks on a background with the Decimal color 14987692.




This preview shows how white text looks on a background with the Decimal color 14987692.

Color Blindness Simulation

Color vision deficiency is a very complex topic, and I could not describe the different causes any better than Wikipedia does, so if you want to learn more, you should check out their [article about color blindness](#).

Dichromacy





Tritanopia
15118268

Trichromacy



Original Color
14987692

Protanomaly
13613488

Deuteranomaly
14398891

Tritanomaly
15052982

Monochromacy



Original Color
14987692

Achromatopsia
12632256

Achromatomaly
13482937

CSS Examples

Text

The CSS property to change the color of the text to Decimal 14987692 is called "color". The color property can be set on classes, ids or directly on the HTML element.

This example shows how text in the color #E4B1AC looks like.

```
.text, #text, p{  
    color:#E4B1AC  
}
```

If you want to add a text shadow in that color use the text-shadow property, you can generate a text shadow directly with our [CSS Text Shadow Generator](#).

Here you see how black text with a 4 pixel #E4B1AC colored shadow looks like.

```
.shadow{ text-shadow: 4px 4px 2px #E4B1AC
}
```

Border

The CSS property to change the border of an element to Decimal 14987692 is called "border". The border property can be set on classes, ids or directly on the HTML element.

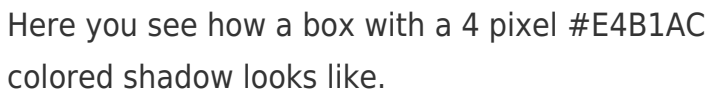
This example shows the color as border, it can be applied via the CSS property "border" or "border-color".

```
.border, #border, table{ border:4px solid
#E4B1AC }
```

If only the border color should be changed use the property `border-color`.

```
.border{ border-color:#E4B1AC }
```

If you want to add a box shadow in that color use:



Here you see how a box with a 4 pixel #E4B1AC colored shadow looks like.

```
.boxshadow{ -moz-box-shadow:4px 4px 4px  
4px #E4B1AC; -webkit-box-shadow:4px 4px  
4px 4px #E4B1AC; box-shadow:4px 4px 4px  
4px #E4B1AC }
```

Background

The CSS property to change the background color of an element to Decimal 14987692 is called "background". The background property can be set on classes, ids or directly on the HTML element.

```
.background, #background, body{  
background:#E4B1AC }
```

If only the background color should be changed can be used:

```
.background{ background-color:#E4B1AC }
```

This example shows the color as background, it is applied via the CSS property "background".

To optimize and compress your CSS code, you can use our [online CSS compressor and optimizer](#) based on csstidy. If you want to create a linear or radial gradient as background or border, check our [CSS Gradient Generator](#).

Hey! You found this booklet interesting? Support Converting Colors with the new Membership Option!

The pro membership hides all ads, plus gives you double the colors in the color bucket, and more awesome pro features!

[Learn more, Memberships starting at \\$2.50/m!](#)

**Follow me
on Twitter!**

@ConvertingColor