

# Converting Colors

Decimal(14988204)

Have a look what the booklet for  
Decimal(14988204) contains.

<b>Decimal(14988204)</b> .....	3
<i><b>Conversions</b></i> .....	4
<i><b>Details</b></i> .....	6
<i><b>Harmonies</b></i> .....	11
<i><b>Previews</b></i> .....	23
<i><b>Color Blindness Simulation</b></i> .....	26
<i><b>CSS Examples</b></i> .....	29

# **Color**

**Decimal(14988204)**

# Conversions

## Conversions Part 1

Format	Color
Hex	E4B3AC
RGB	228, 179, 172
RGB Percent	89%, 70%, 67%
CMY	0.1059, 0.2980, 0.3255
CMYK	0.00, 0.21, 0.25, 0.11
HSL	7°, 51%, 78%
HSV	7°, 25%, 89%
XYZ	55.5614, 51.7127, 46.0829
YIQ	192.8530, 31.4510, 8.2110

# Conversions

## Conversions Part 2

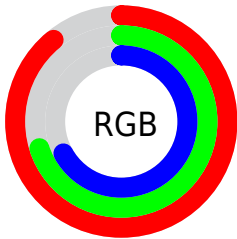
<b>Format</b>	<b>Color</b>
R <sub>Y</sub> B	228, 180, 172
Decimal	14988204
CIE Lab	77.11, 16.74, 10.37
CIE LCh	77, 19.691, 31.783
Yxy	51.7127, 0.3623, 0.3372
Android (android.graphics.Color)	4293178284 (0xFFE4B3AC)
YUV	192.8530, -10.2805, 30.8239
Hunter-Lab	71.9116, 12.0701, 12.3435

# Details

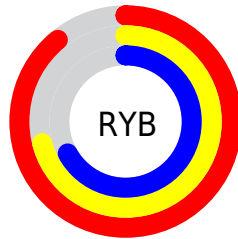
The Decimal color **14988204** is a light color, and the websafe version is hex **CC9999**. A complement of this color would be **11328996**, and the grayscale version is **12698049**.

A 20% lighter version of the original color is **16772067**, and **11304568** is the 20% darker color. If you saturate the color by 10%, you get **14983061**, and if you desaturate by 10%, it is **14993347**.

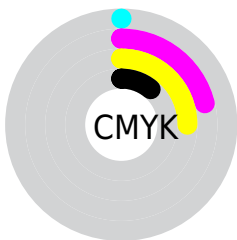
# Distribution



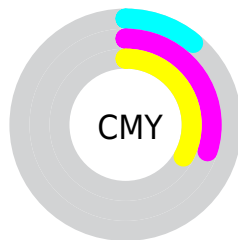
- Red (89%)
- Green (70%)
- Blue (67%)



- Red (89%)
- Yellow (71%)
- Blue (67%)



- Cyan (0%)
- Magenta (21%)
- Yellow (25%)
- Black (11%)



- Cyan (11%)
- Magenta (30%)
- Yellow (33%)

# Brightness & Saturation Gradients

These gradients show how the Decimal color 14988204 changes by changing the brightness by 10 percent. The first figure shows a shift by +10% for each color and the second figure -10%.

Similar to the brightness gradients but the following saturation gradients show a change of the Decimal color 14988204 by changing the saturation by 10% instead.



 14988204

 14988204

16777215

 13146257

 16772067

 11304568

 9528671

 7753031

 6043185

 4464668

 2951937

 720896

 0

 14988204

 14988204

 14983061

 14993347

 14977918

 14998490

 14972776

 15003632

 14967633

 15007743

 14962490

 14957347

 14952204

 14949376

# Harmonies

## Analogous

The Analogous color harmony consists of three colors that are next to each other on the color wheel.



14922430



14988204



14465183

# Triad

The Triadic color harmony groups three colors that are evenly spaced from another and form a triangle on the color wheel.



14988204



10733485



11256034

# Complementary

The Complementary color scheme is a pair of colors which are on the opposite of each other on the color wheel.



14988204



11328996

# Split Complementary

Split-complementary colors differ from the complementary color scheme. The scheme consists of three colors, the original color and two neighbors of the complement color.



9946590



14988204



9685439

# Square

The Square scheme is like the rectangle color scheme, but the four colors are evenly spaced on the color wheel.



14988204



12043167



9291985



12827101

# Rectangle

The Rectangle color scheme consists of four colors that form a rectangle on the color wheel.



14988204



13810587



9291985



10732258



# Sweetspot

The Sweet Spot groups the original color and five complimentary colors.



14988204



16773101



14986461



8419189



0



8421504



# Same Dimension

The Same Dimension uses a secret algorithm to generate beautiful new colors.



14988204



16760501



14995372



7563623



11736576



3343872

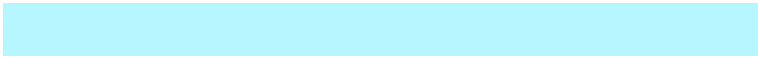


# Inverse Universe

The Inverse Universe completely reimagines the original color for something new.



11328996



11925247



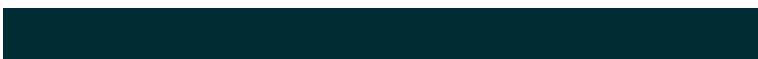
11321828



6779251



40115



11571



# Previews

## White Background



This preview shows how the Decimal color 14988204 looks on a white background.

## Color Contrast Check

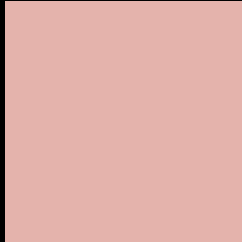
Large Text (above 18pt) WCAG AA × Fail

Any Text WCAG AA × Fail

Large Text (above 18pt) WCAG AAA × Fail

Any Text WCAG AAA × Fail

# Black Background



This preview shows how the Decimal color 14988204 looks on a black background.

## Color Contrast Check

Large Text (above 18pt) WCAG AA ✓ Pass

Any Text WCAG AA ✓ Pass

Large Text (above 18pt) WCAG AAA ✓ Pass

Any Text WCAG AAA ✓ Pass

If you want to check with other color combinations, try the [Color Contrast Checker](#).



## Decimal 14988204 Background



This preview shows how black text looks on a background with the Decimal color 14988204.




This preview shows how white text looks on a background with the Decimal color 14988204.

# Color Blindness Simulation

Color vision deficiency is a very complex topic, and I could not describe the different causes any better than Wikipedia does, so if you want to learn more, you should check out their [article about color blindness](#).

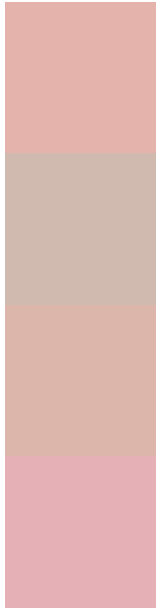
## Dichromacy





**Tritanopia**  
15118526

# Trichromacy



**Original Color**  
14988204

**Protanomaly**  
13679280

**Deuteranomaly**  
14464683

**Tritanomaly**  
15053239

# Monochromacy



**Original Color**  
14988204

**Achromatopsia**  
12698049

**Achromatomaly**  
13548729

# CSS Examples

## Text

The CSS property to change the color of the text to Decimal 14988204 is called "color". The color property can be set on classes, ids or directly on the HTML element.

This example shows how text in the color #E4B3AC looks like.

```
.text, #text, p{  
  color:#E4B3AC  
}
```

If you want to add a text shadow in that color use the text-shadow property, you can generate a text shadow directly with our [CSS Text Shadow Generator](#).

Here you see how black text with a 4 pixel #E4B3AC colored shadow looks like.

```
.shadow{ text-shadow: 4px 4px 2px #E4B3AC
}
```

## Border

The CSS property to change the border of an element to Decimal 14988204 is called "border". The border property can be set on classes, ids or directly on the HTML element.

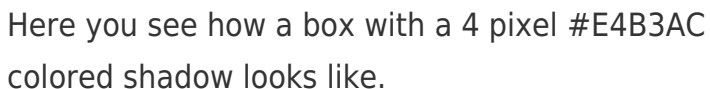
This example shows the color as border, it can be applied via the CSS property "border" or "border-color".

```
.border, #border, table{ border:4px solid
#E4B3AC }
```

If only the border color should be changed use the property `border-color`.

```
.border{ border-color:#E4B3AC }
```

If you want to add a box shadow in that color use:



Here you see how a box with a 4 pixel #E4B3AC colored shadow looks like.

```
.boxshadow{ -moz-box-shadow:4px 4px 4px  
4px #E4B3AC; -webkit-box-shadow:4px 4px  
4px 4px #E4B3AC; box-shadow:4px 4px 4px  
4px #E4B3AC }
```

# Background

The CSS property to change the background color of an element to Decimal 14988204 is called "background". The background property can be set on classes, ids or directly on the HTML element.

```
.background, #background, body{  
background:#E4B3AC }
```

If only the background color should be changed can be used:

```
.background{ background-color:#E4B3AC }
```

This example shows the color as background, it is applied via the CSS property "background".

To optimize and compress your CSS code, you can use our [online CSS compressor and optimizer](#) based on csstidy. If you want to create a linear or radial gradient as background or border, check our [CSS Gradient Generator](#).



Hey! You found this booklet interesting? Support Converting Colors with the new Membership Option!

The pro membership hides all ads, plus gives you double the colors in the color bucket, and more awesome pro features!

**[Learn more, Memberships starting at \\$2.50/m!](#)**

**Follow me  
on Twitter!**

@ConvertingColor